

Drawn by Nature

Flora | Lichen | Lily Pad | Meadow | Moss
Reed | Tree Bark | Wild Mushroom



CARPET TILE



Drawn by Nature

Collection

Discover the soothing terrain of forests, meadows, and ponds with Drawn by Nature. This collection of carpet tile explores the calmness instilled in us by our natural world, finding the ground itself to be an inspiring source of inner peace as much as a site of beauty.

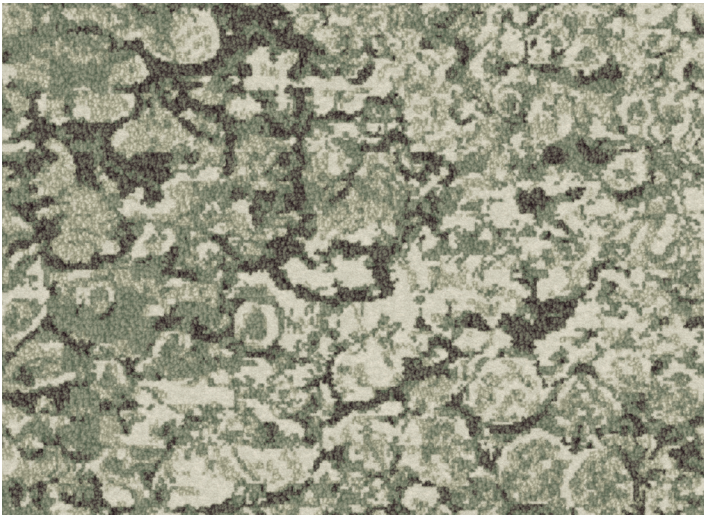
Through organic abstractions of mosses, lichen-covered stone, lush grasses, and more, Drawn by Nature creates a world of tranquility from the ground up.



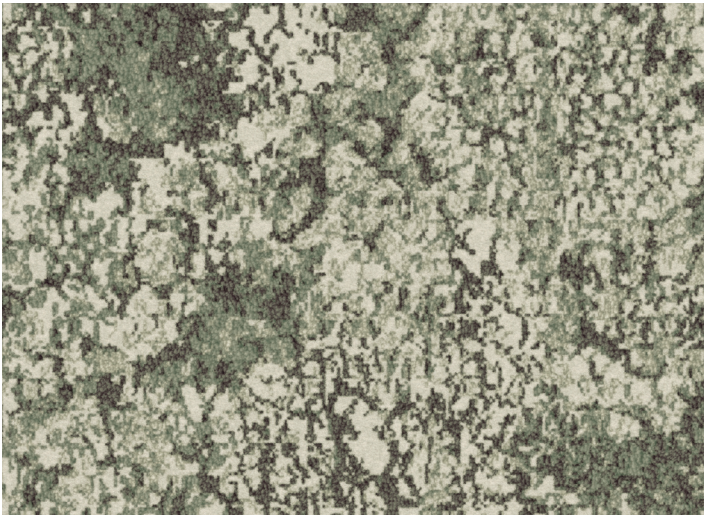
Scan to Learn More



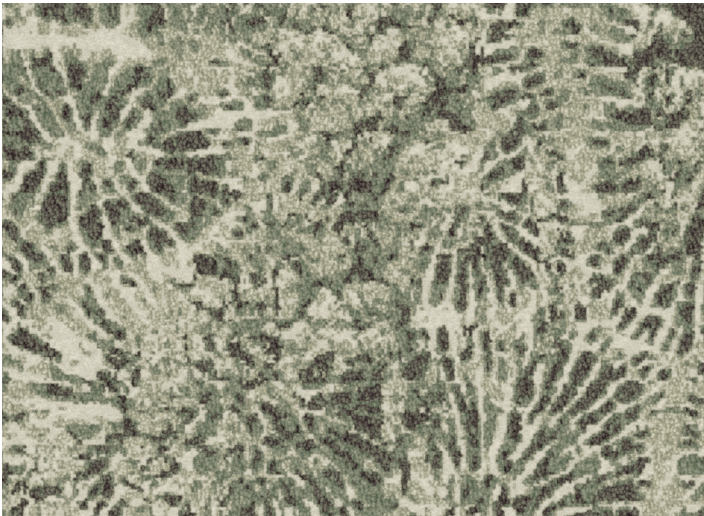




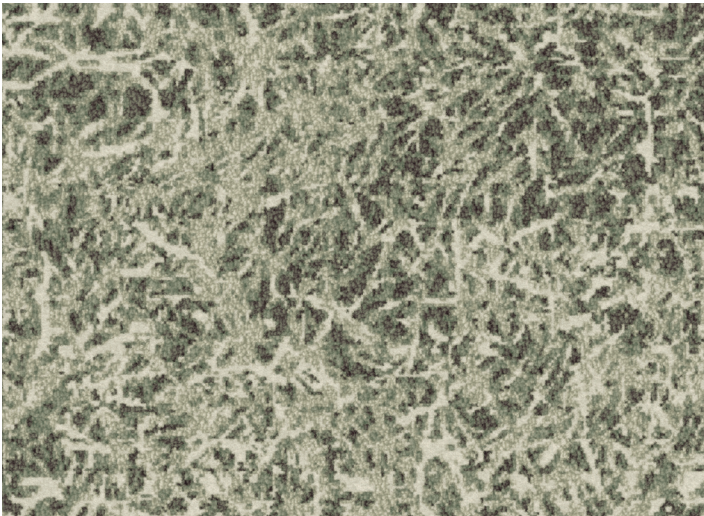
Flora W0071 Foliage 305



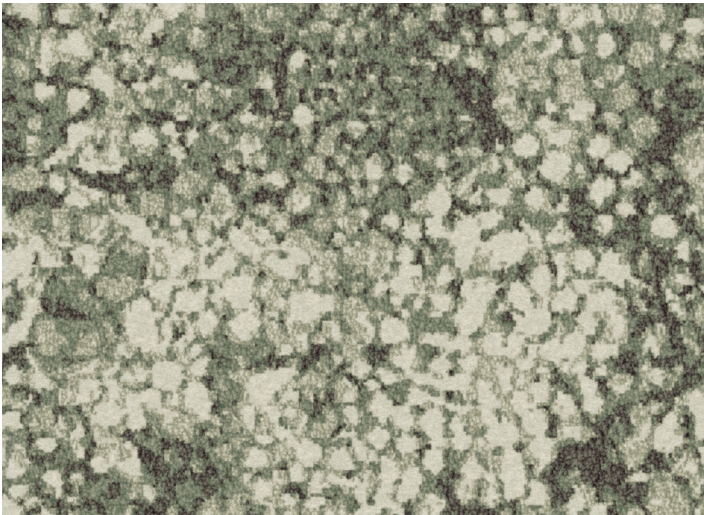
Lichen W0075 Foliage 305



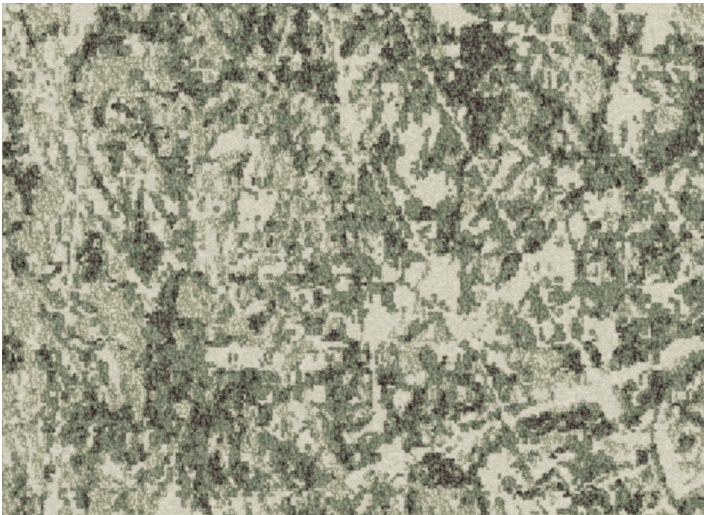
Lily Pad W0061 Foliage 305



Meadow W0067 Foliage 305



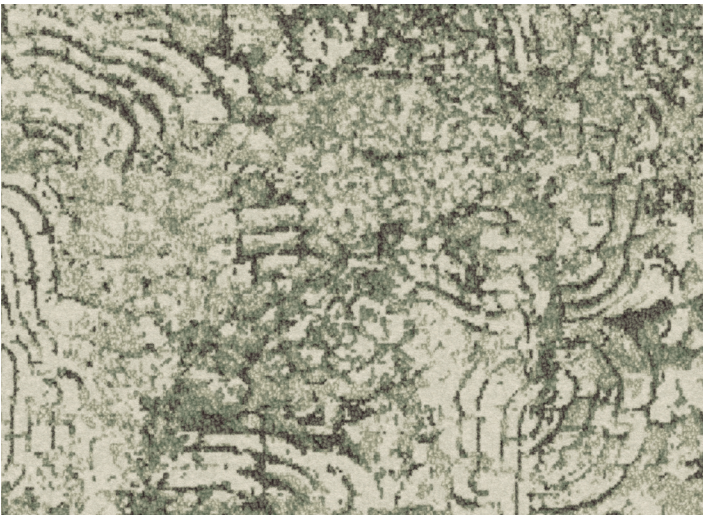
Moss W0065 Foliage 305



Reed W0069 Foliage 305



Tree Bark W0073 Foliage 305



Wild Mushroom W0063 Foliage 305

Drawn by Nature

8 Styles | 4 colorways | 18" x 36" tiles

Evoking the quiet beauty that we find beneath our feet in a natural landscape, the styles and colorways capture elements from nature's own varied floor, infusing spaces with a deep-rooted sense of calm.



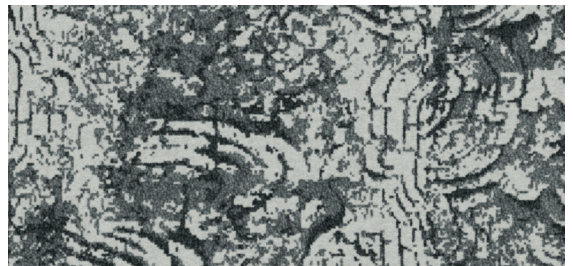
Earth 125



Foliage 305



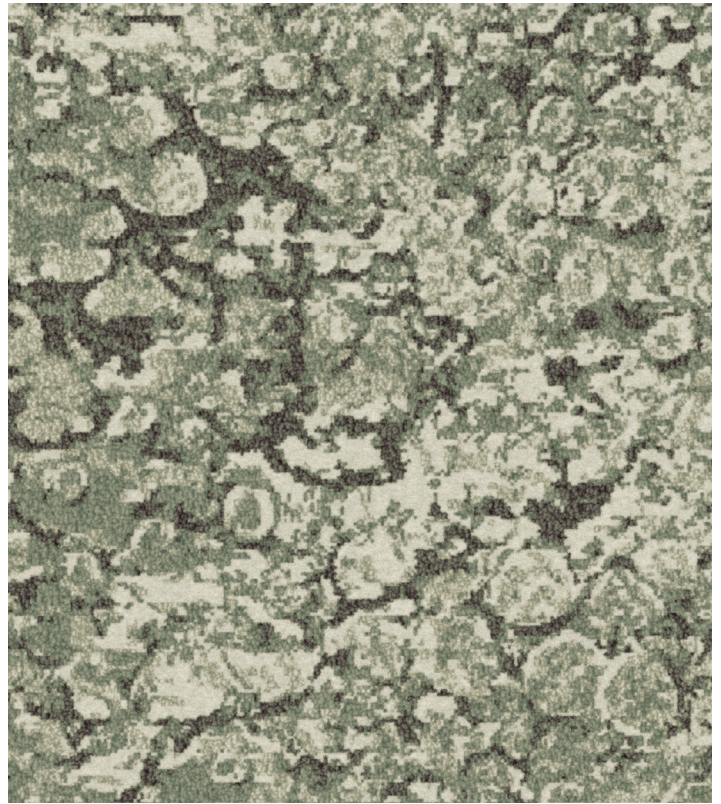
Stone 815



Stream 645



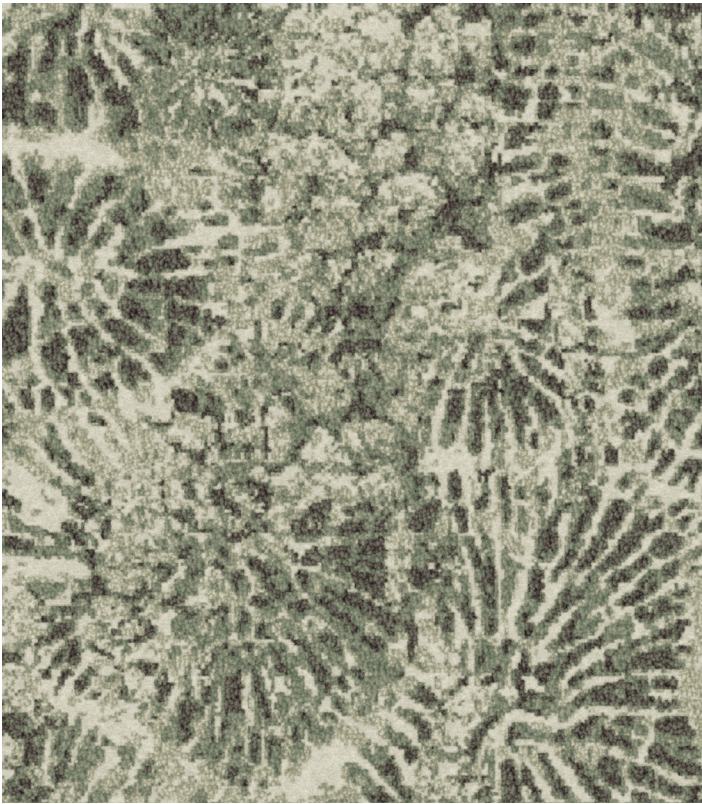
Meadow W0067 Earth 125 | 18" X 36" Vertical Ashlar Installation



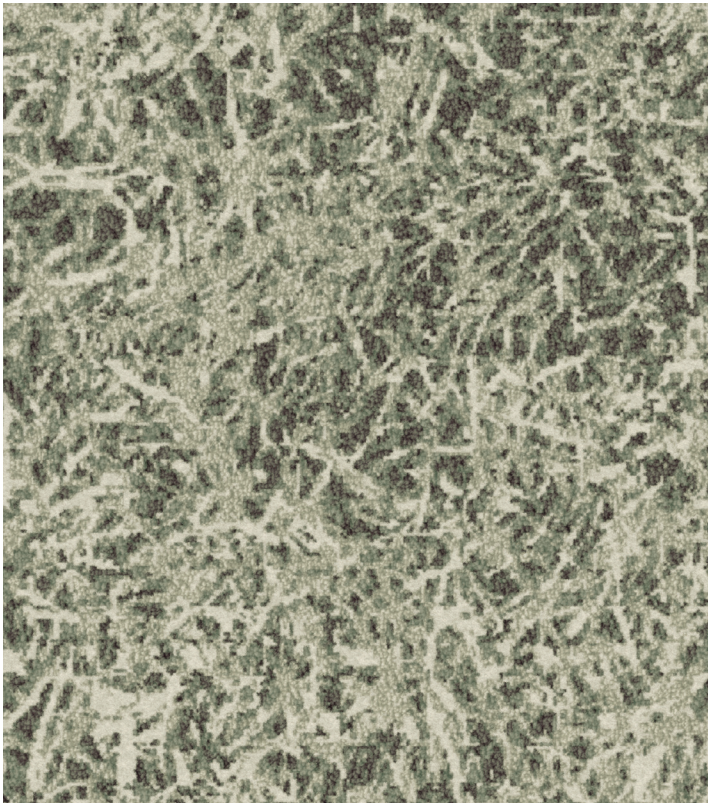
Flora W0071 Foliage 305



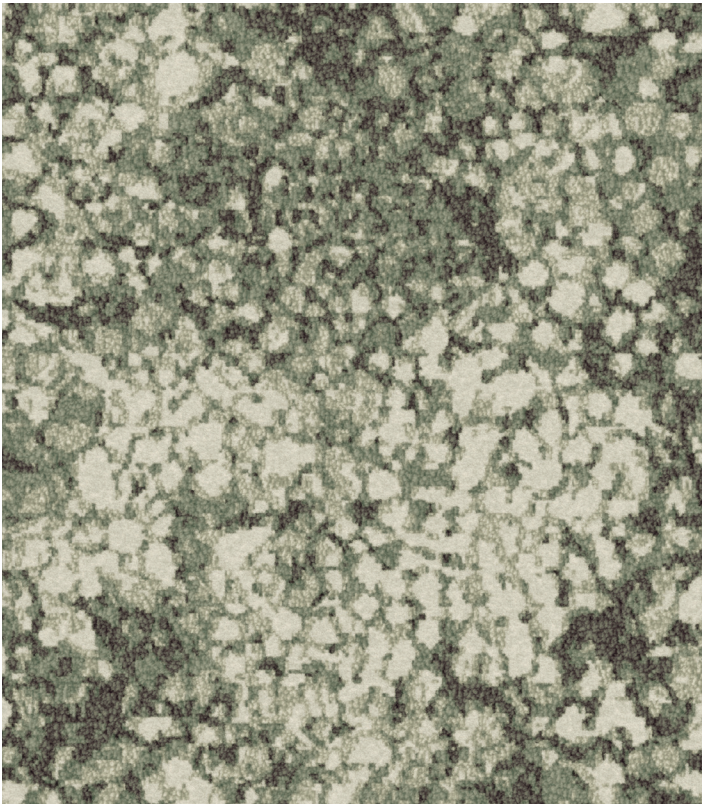
Lichen W0075 Foliage 305



Lily Pad W0061 Foliage 305



Meadow W0067 Foliage 305



Moss W0065 Foliage 305



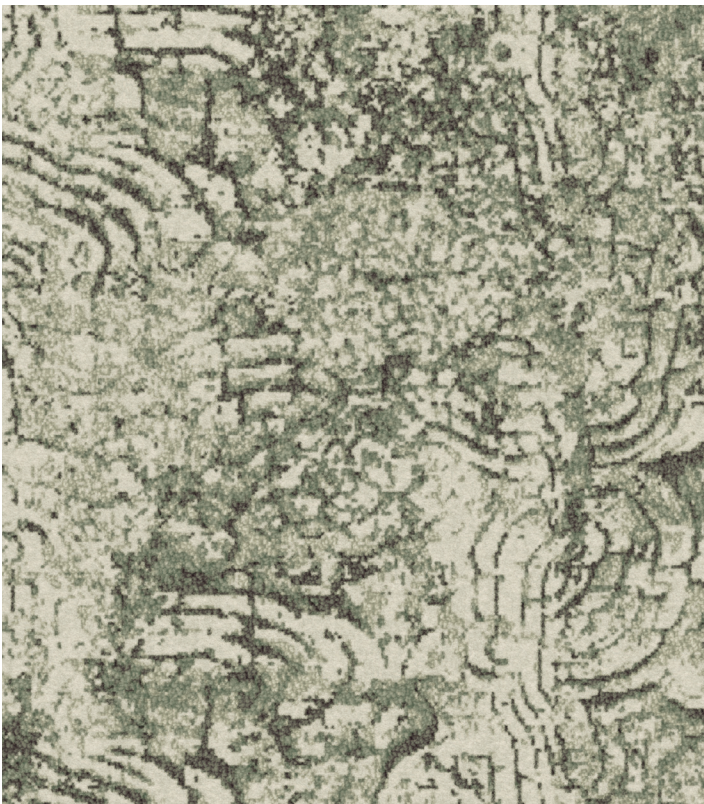
Reed W0069 Foliage 305



Lily Pad W0061 Foliage 305 | 18" X 36" Vertical Ashlar Installation



Tree Bark W0073 Foliage 305

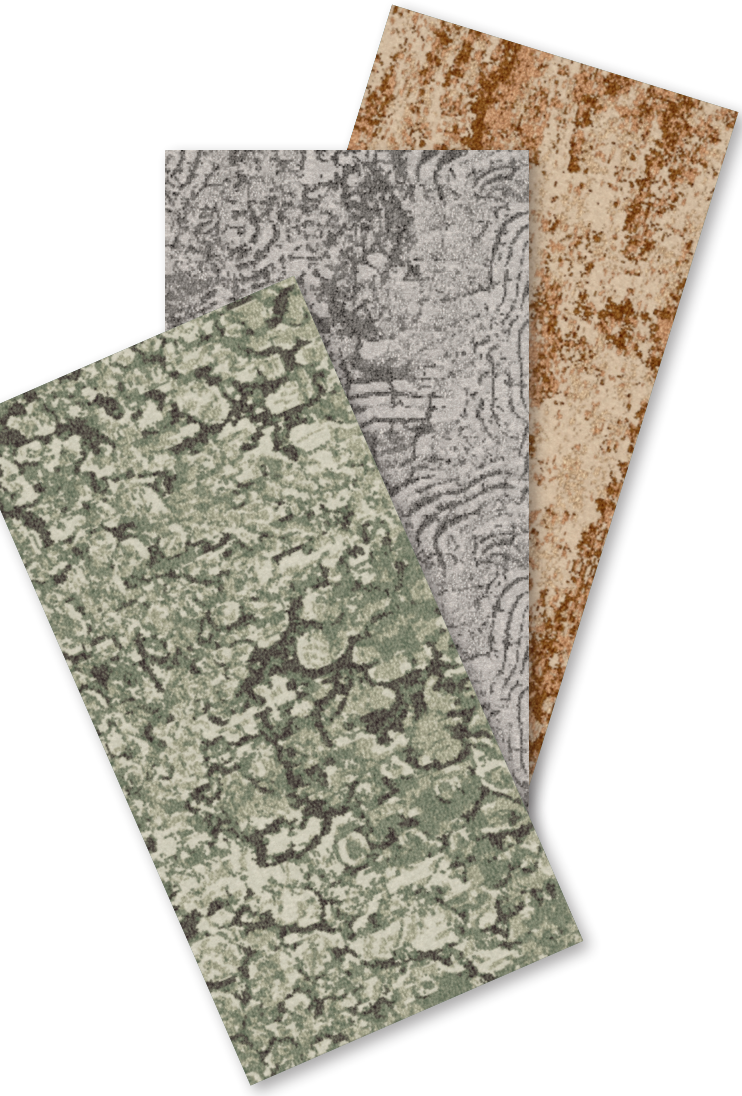


Wild Mushroom W0063 Foliage 305





Wild Mushroom W0063 Stone 815 | 18" X 36" Vertical Ashlar Installation



Our Fibers

Durable, cost-effective, and eco-friendly, Lextron™ Enviro-Green is 100% solution dyed, made from 10% pre-consumer recycled content and is recyclable after the carpet life cycle is complete.

Lextron™ Enviro-Green Solution Dyed Nylon

Our in-house production process, using state-of-the-art equipment, ensures high-quality, fade-resistant fiber with superior stain resistance. With a higher twist level than industry standards, Lextron™ Enviro-Green offers exceptional durability.

Tarkett Hospitality can create solid color options to coordinate with any of our running line products. Choose from over 160 colors. Please refer to our Lextron™ pom box for the full color offering (excludes metallics and barber poles) or contact your rep for more information.

Carpet Tile Benefits

The versatility of modular carpet tiles provides numerous benefits:

- Endless options to curate unique layout designs
- Easier to install than traditional carpet, and no long-term commitment
- Easier to inset within a hard surface floor without transition strips
- Can be quickly pulled up for a design refresh, replacement, or repair

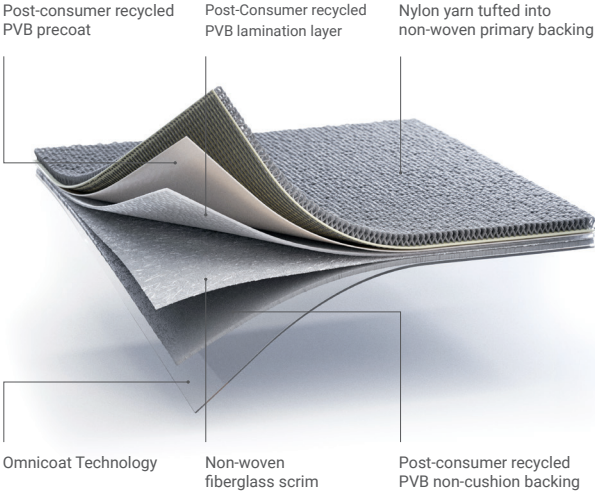
Running Line Visualizer Studio

Visualize Tarkett Hospitality carpet tile and LVT in a variety of hospitality environments—or in your own space by uploading a photo.



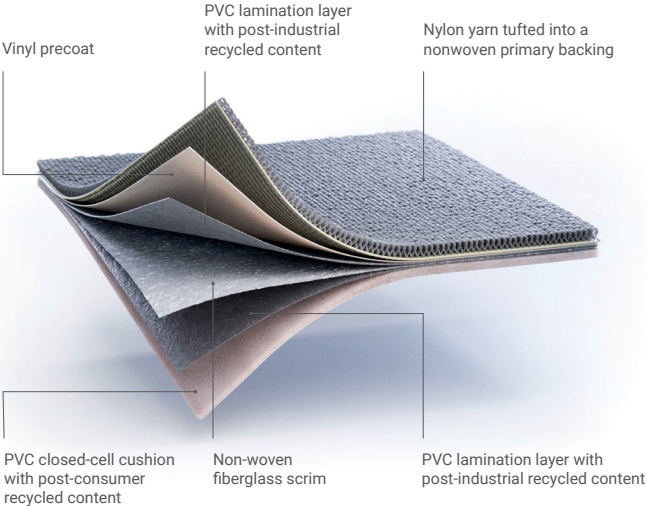
Our Backings

Select from two sustainable backing systems, *ethos*® Modular with *Omnicoat Technology*™ and *Flex-Aire*™ Cushion Modular, tailored to your specific performance needs. Our portfolio showcases sustainable solutions, reflecting our commitment to *Proof in Every Step*™ of our design and manufacturing process.



ethos Modular with Omnicoat Technology is a non-PVC backing made with post-consumer recycled PVB from car windshields and architectural glass from buildings.

When installed with TarkettTAPE, *ethos* with Omnicoat Technology requires no moisture testing.



Flex-Aire Modular Cushion provides superior acoustic performance, appearance retention, and moisture management. Offering a 0.22 Noise Reduction Coefficient and a 68 Impact Insulation Class, the product reduces noise and impacts, producing a calmer environment.

With 22-28% overall recycled content (including a minimum of 5-6% post-consumer content), *Flex-Aire* may be installed with TarkettTAPE for a floating installation (which can be just as easily uninstalled). The product may also be installed with Tarkett’s C-12E pressure-sensitive adhesive, which has a C2C Certified Material Health Certificate™ at the Silver level.

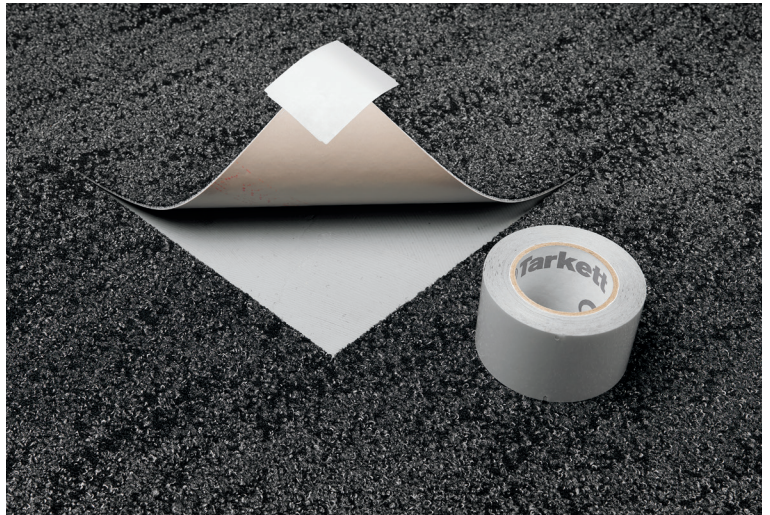
Our technologies.

Omnicoat Technology® is a patented barrier applied to the back of all ethos® Modular flooring. By creating an inert layer on the bottom of ethos, Omnicoat prevents moisture, pH, or previous adhesives from affecting the floor installation.

When combined with TarkettTAPE™, ethos can be installed without moisture testing, saving one to three days of time. Installation can begin as long as there is no visible moisture and the previous adhesive is scraped flat and doesn't telegraph visually through the ethos installation.



TarkettTAPE, a patented polyester film with a chemically inert, silicone-based adhesive, pairs versatility with a future-ready chemical resistance. Tested in extreme moisture and pH levels, the product is capable of withstanding the most adverse concrete conditions and can be used with either Flex-Aire Modular® Cushion or ethos with Omnicoat Technology (which eliminates the need for moisture testing). TarkettTAPE is a fast, easy way to float an installation and makes it simple to uninstall, reinstall and replace tiles when necessary.



Specifications.

CARPET TILE

Style Name/Number: Lily Pad W0061, Wild Mushroom W0063, Moss W0065, Meadow W0067, Reed W0069, Flora W0071, Tree Bark W0073, Lichen W0075

Construction: Intrepid Multi-Level Cut/Loop
Fiber Content: Lextron™ Enviro-Green Nylon
Dye Method: 100% Solution Dyed
Secondary Backing: Ethos with Omnicoat
Size: 18 in. x 36 in.
12 tiles/box, 6.0 Sq. Yds./box
Gauge: 1/10
Stitches per Inch: 9
Tufted Pile Weight: 28 oz. per Sq. Yd.
Total Weight: 117.99 oz.
Density: 7,366
Pile Thickness: .125 in.
Pattern Repeat: Tile
Overall Thickness: .290 in.
Traffic Class: Heavy
Pill Test: Pass
Radiant Panel: Class I
Flammability: ASTM E 648 Class I
Smoke Density: ASTM E 662 Less than 450
Electrostatic Propensity: Less Than 3.5kv
Indoor Air Quality: CRI Green Label Plus GLP8320
Warranty: 10 Year Limited Warranty

Custom Options:
Sizes: 24 in. x 24 in. (15 tiles/box, 6.667 Sq. Yds./box)
9 in. x 36 in. (24 tiles/box, 6.0 Sq. Yds./box)
Backing: Flex-Aire



ReStart

We're committed to creating a circular economy where nothing goes to waste. Take part by starting your next project with Tarkett's ReStart® flooring take-back and recycling program. The ReStart program will accept any type of soft surface or resilient flooring from any manufacturer. Join us as we innovate and collaborate towards a healthier future for this generation and those to come.

Transparency.

Access to Transparency Documents: Transparency certifications and product details are located on the Tarkett website, ecomedes.com and [mindful MATERIALS](http://mindfulMATERIALS.com). Visit us on [Ecomedes \(tarkett.ecomedes.com\)](http://ecomedes.com) to find product certification documentation to support green building systems and federal standards.



NON PVC

(ethos)



For more accurate color and pattern representation, we suggest you contact your local Tarkett Hospitality Sales Rep to view an actual product sample. All third-party trademarks are the property of their respective owners.

Tarkett Hospitality
285 Kraft Drive
Dalton, GA 30721
800.871.3211
www.tarketthospitality.com