

# AC HOTELS by MARRIOTT

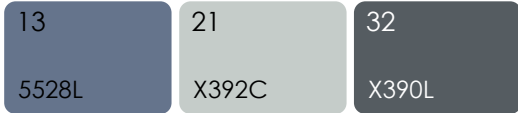
## Gen 2.0 CORRIDORS



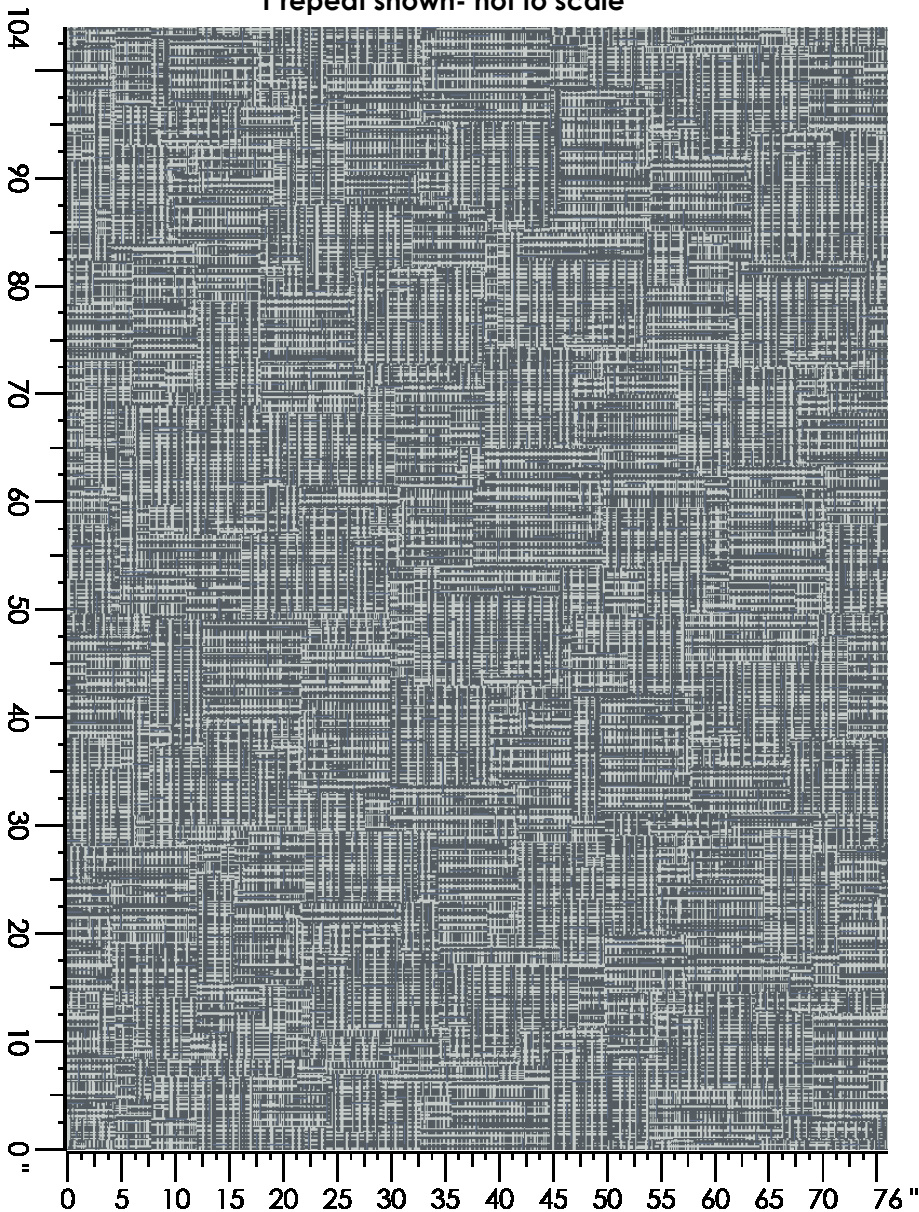
**AMANECER (LIGHT) SCHEME**  
**MARRIOTT ID: A0021-886-24" X 24"**

**AC MARRIOTT CPTL**  
**Room Type: Corridor**

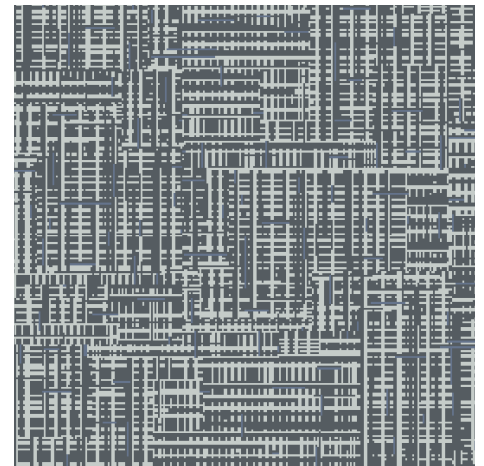
**A0021 C. 886**  
**Product Type: Intrepid Tile**  
**Repeat: 76.00" X 104.00"**  
**Ounce: 26**  
**Tile Size: 24" X 24"**  
**Suggested Install: Vert Ash, Quarter Turn**

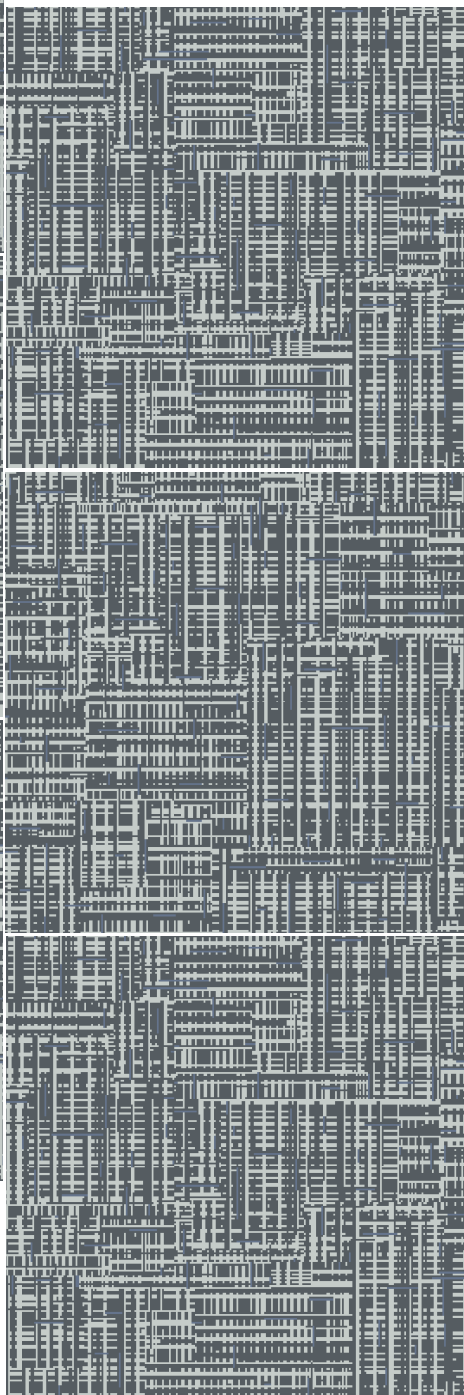
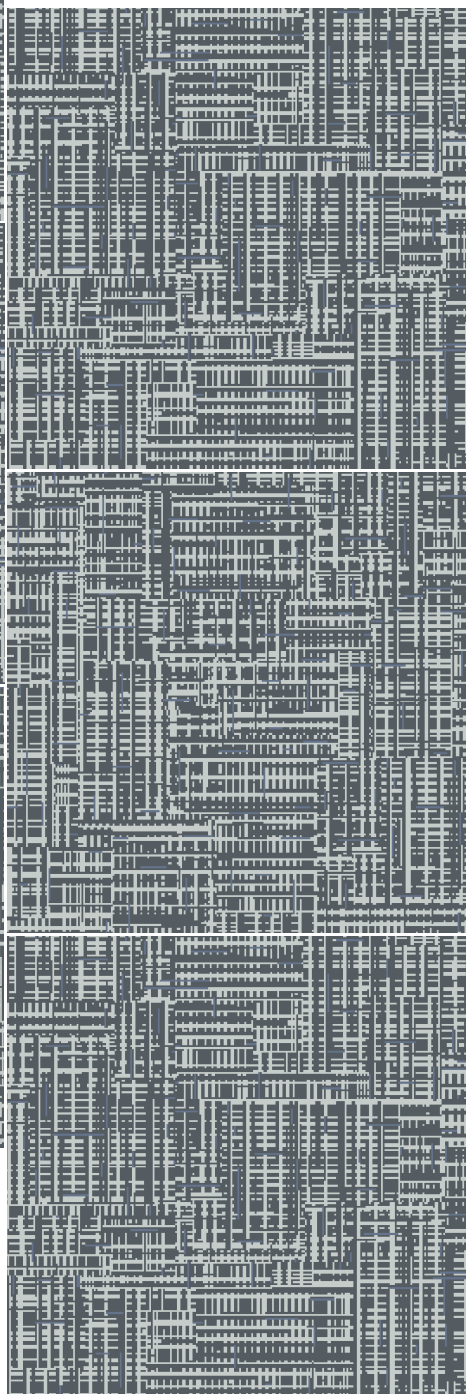
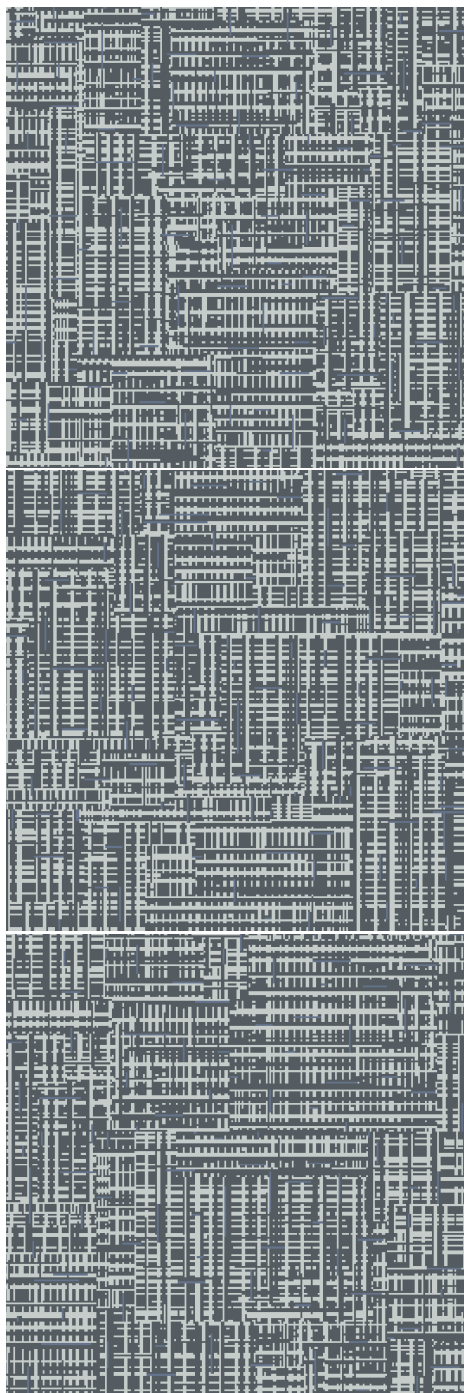


1 repeat shown- not to scale

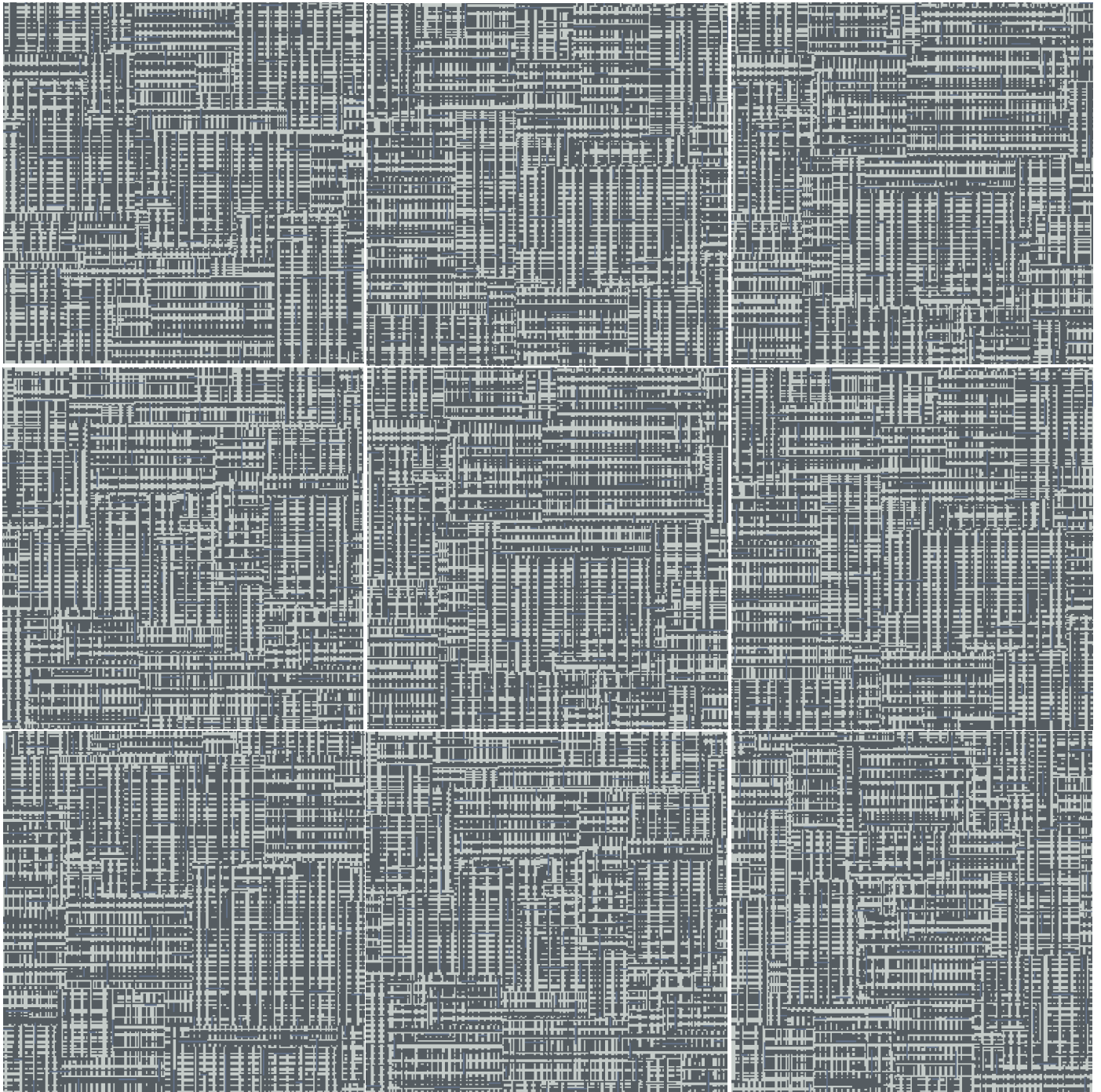


24" X 24" Random Cut Tile











AC MARRIOTT CPTL  
A0021 Color 886 Corridor  
Production Tile Specifications

AMANECER (LIGHT) SCHEME  
MARRIOTT ID: A0021-886-24" X 24"

Style Number/Color	<b>A0021 / 886</b>
Product Type	<b>Intrepid Tile</b>
Construction	<b>Multi-Level Pattern Cut/Loop</b>
Fiber	<b>Lextron Enviro-Green Nylon</b>
Dye Method	<b>Solution Dyed NHS</b>
Primary Backing	<b>Woven Polypropylene</b>
Secondary Backing	<b>Ethos w/Omnicoat</b>

#### Specifications

Size Options	<b>24" x 24" Tile</b>
Gauge	<b>1/10</b>
Stitches per Inch	<b>9</b>
Tufted Weight	<b>26 oz per sq/yd</b>
Total Weight	<b>104 oz per sq/yd</b>
Finished Pile Thickness	<b>.218" Approx.</b>
Total Thickness	<b>.343" Approx.</b>

#### Performance

Traffic Class (TARR)	<b>Heavy</b>
Pill Test	<b>Pass</b>
Radiant Panel	<b>Class I</b>
Flammability	<b>ASTM E 648 Class I</b>
Smoke Density	<b>ASTM E 662 Less than 450</b>
LEED Info	<b>Green Label Plus Certified - GLP8320</b>

<b>Warranty</b>	<b>10 Year Limited Warranty</b>
-----------------	---------------------------------

#### Install Methods

**24x24**  
**Vert Ashlar, Quarter Turn**

Enviro-Green yarn has 10% pre-consumer recycled content.  
Recommended for moderate (guestroom) carpet traffic levels.

Carpet should be installed in accordance with the Carpet and Rug Institute's standard CRI-104/CRI-105.  
Pattern streaks and banding are visually apparent streaking in patterned carpet resulting from linear juxtaposition of pattern elements visible in both length and width direction.  
IT IS NOT A CARPET DEFECT, but is inherent in solution dyed graphic and cut/loop patterns.

#### Product Notes

1. Specifications are subject to nominal manufacturing variances. Material supply and/or manufacturing processes may necessitate changes without notice.  
Colors may vary slightly from dye lot to dye lot.
2. U.S. Patent numbers: 4,849,267; 6,406,574, US 9,988,760 B2
3. Chair pads are recommended for optimum textural performance. Absent the use of chair pads, more intensive maintenance will be required for areas in direct contact with chair caster traffic, and some degree of appearance change is to be expected.

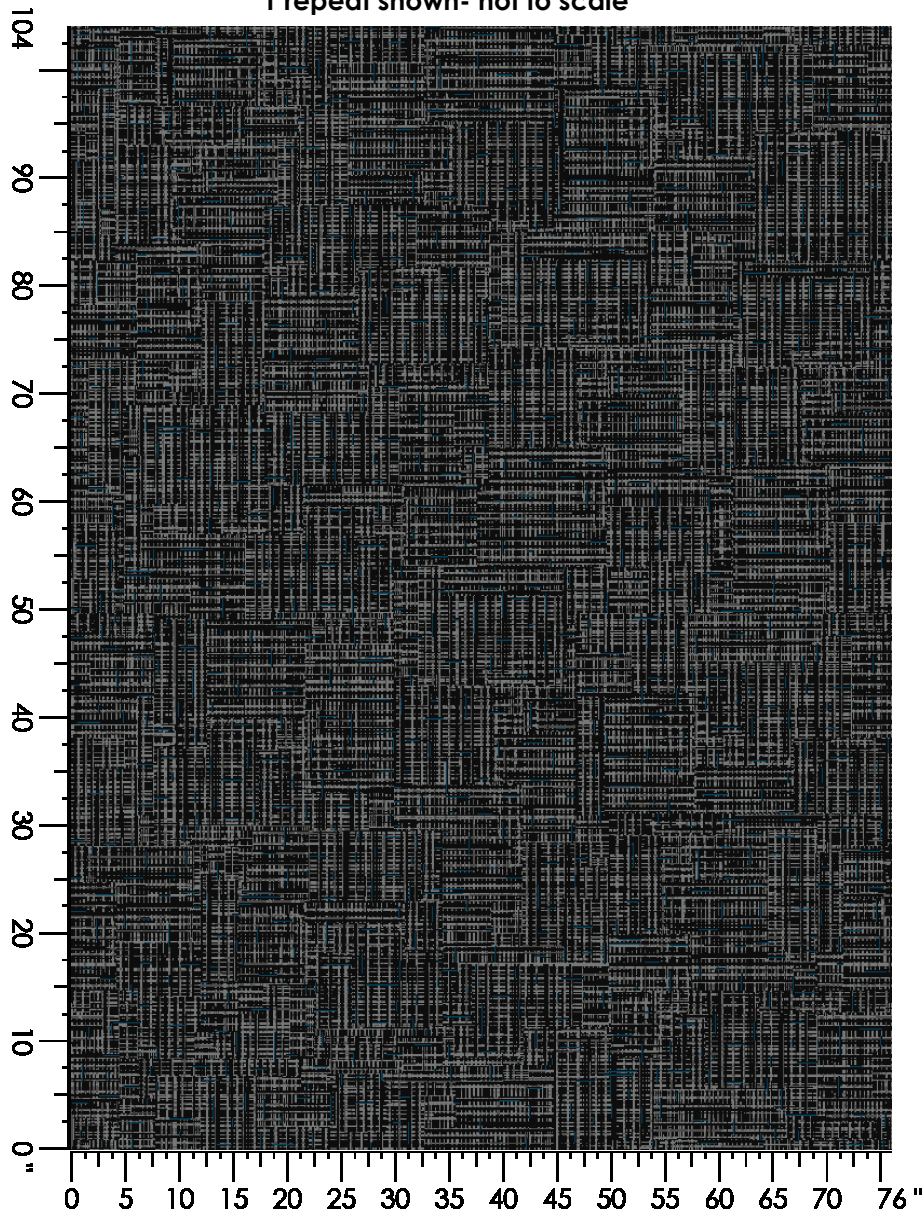
**CREPUSCULO (DARK) SCHEME**  
**MARRIOTT ID: A0023-986-24" X 24"**

A0023 C. 986  
Product Type: Intrepid Tile  
Repeat: 76.00" X 104.00"  
Ounce: 28  
Tile Size: 24" X 24"  
Suggested Install: Vert Ash, Quarter Turn

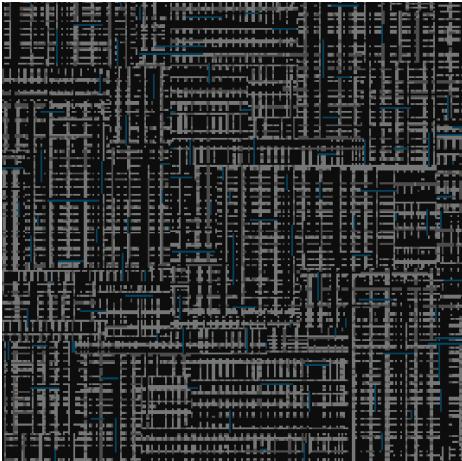
AC MARRIOTT CPTL  
Room Type: Corridor

14	21	32	43
5529L	8531L	X452L	8002L

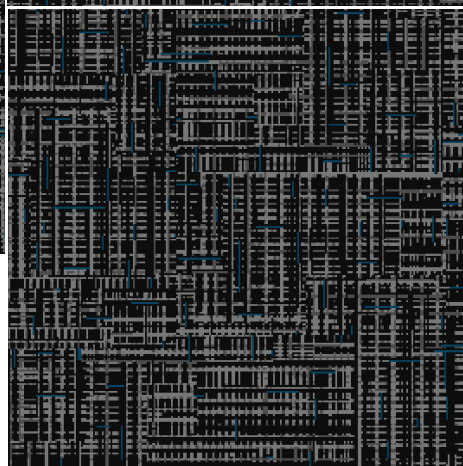
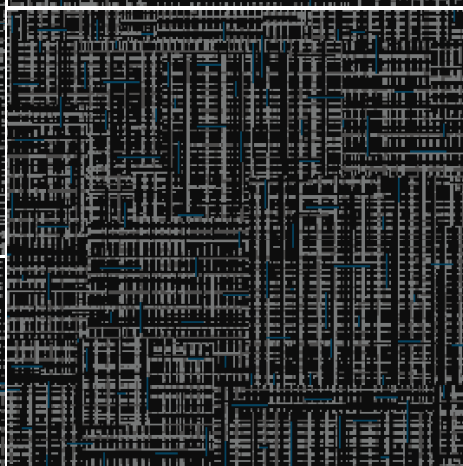
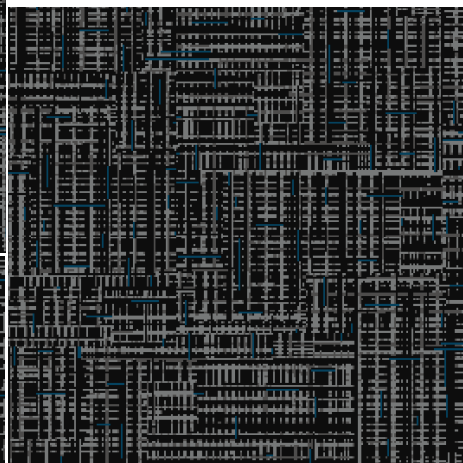
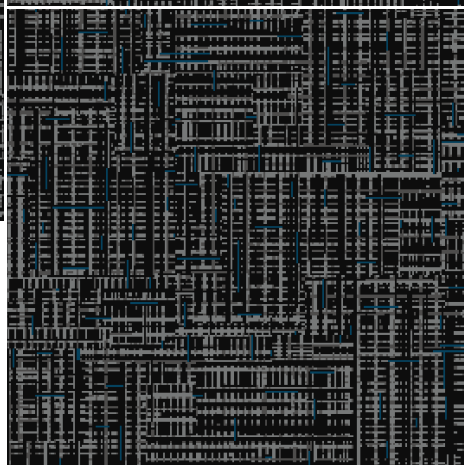
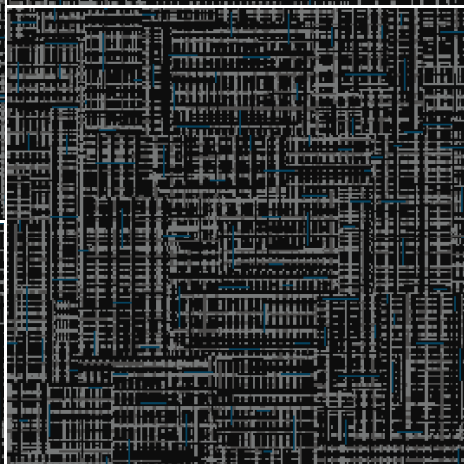
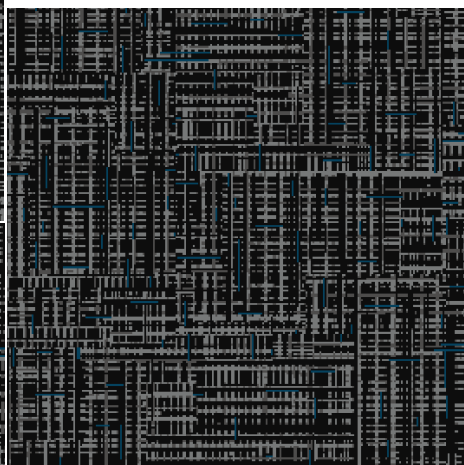
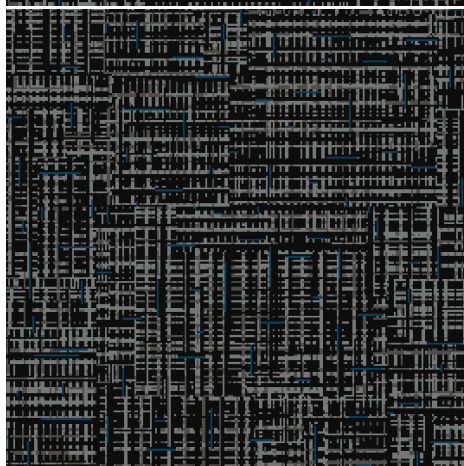
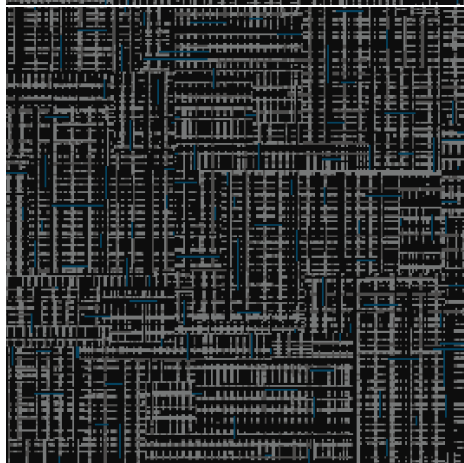
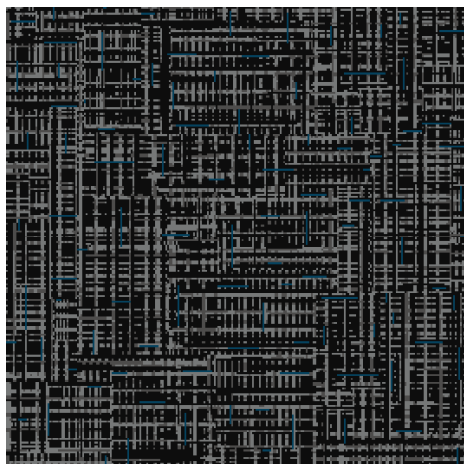
1 repeat shown- not to scale

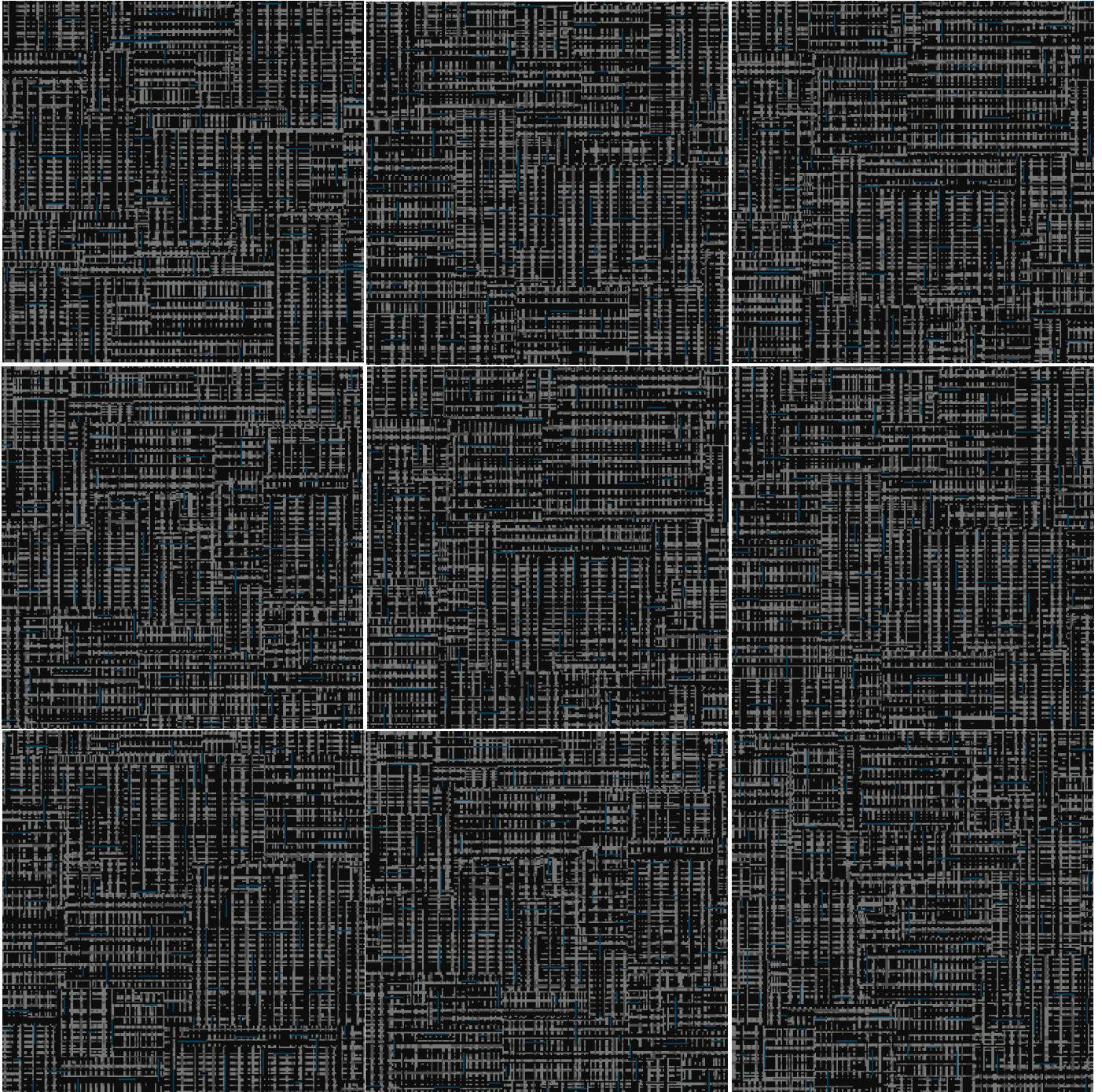


24" X 24" Random Cut Tile













AC MARRIOTT CPTL  
A0025 Color 112 Corridor  
Production Tile Specifications

CREPUSCULO (DARK) SCHEME  
MARRIOTT ID: A0023-986-24" X 24"

Style Number/Color	<b>A0025 / 112</b>
Product Type	<b>Intrepid Tile</b>
Construction	<b>Multi-Level Pattern Cut/Loop</b>
Fiber	<b>Lextron Enviro-Green Nylon</b>
Dye Method	<b>Solution Dyed NHS</b>
Primary Backing	<b>Woven Polypropylene</b>
Secondary Backing	<b>Ethos w/Omnicoat</b>

#### Specifications

Size Options	<b>24" x 24" Tile</b>
Gauge	<b>1/10</b>
Stitches per Inch	<b>9</b>
Tufted Weight	<b>28 oz per sq/yd</b>
Total Weight	<b>106 oz per sq/yd</b>
Finished Pile Thickness	<b>.218" Approx.</b>
Total Thickness	<b>.343" Approx.</b>

#### Performance

Traffic Class (TARR)	<b>Heavy</b>
Pill Test	<b>Pass</b>
Radiant Panel	<b>Class I</b>
Flammability	<b>ASTM E 648 Class I</b>
Smoke Density	<b>ASTM E 662 Less than 450</b>
LEED Info	<b>Green Label Plus Certified - GLP8320</b>

<b>Warranty</b>	<b>10 Year Limited Warranty</b>
-----------------	---------------------------------

#### Install Methods

**24x24**  
**Vert Ashlar, Quarter Turn**

Enviro-Green yarn has 10% pre-consumer recycled content.  
Recommended for moderate (guestroom) carpet traffic levels.

Carpet should be installed in accordance with the Carpet and Rug Institute's standard CRI-104/CRI-105.  
Pattern streaks and banding are visually apparent streaking in patterned carpet resulting from linear juxtaposition of pattern elements visible in both length and width direction.  
IT IS NOT A CARPET DEFECT, but is inherent in solution dyed graphic and cut/loop patterns.

#### Product Notes

1. Specifications are subject to nominal manufacturing variances. Material supply and/or manufacturing processes may necessitate changes without notice.  
Colors may vary slightly from dye lot to dye lot.
2. U.S. Patent numbers: 4,849,267; 6,406,574, US 9,988,760 B2
3. Chair pads are recommended for optimum textural performance. Absent the use of chair pads, more intensive maintenance will be required for areas in direct contact with chair caster traffic, and some degree of appearance change is to be expected.

A0025 c. 112

Product Type: Intrepid Tile

Repeat: 76.00" X 104.00"

Ounce: 28oz

Tile Size: 24" X 24"

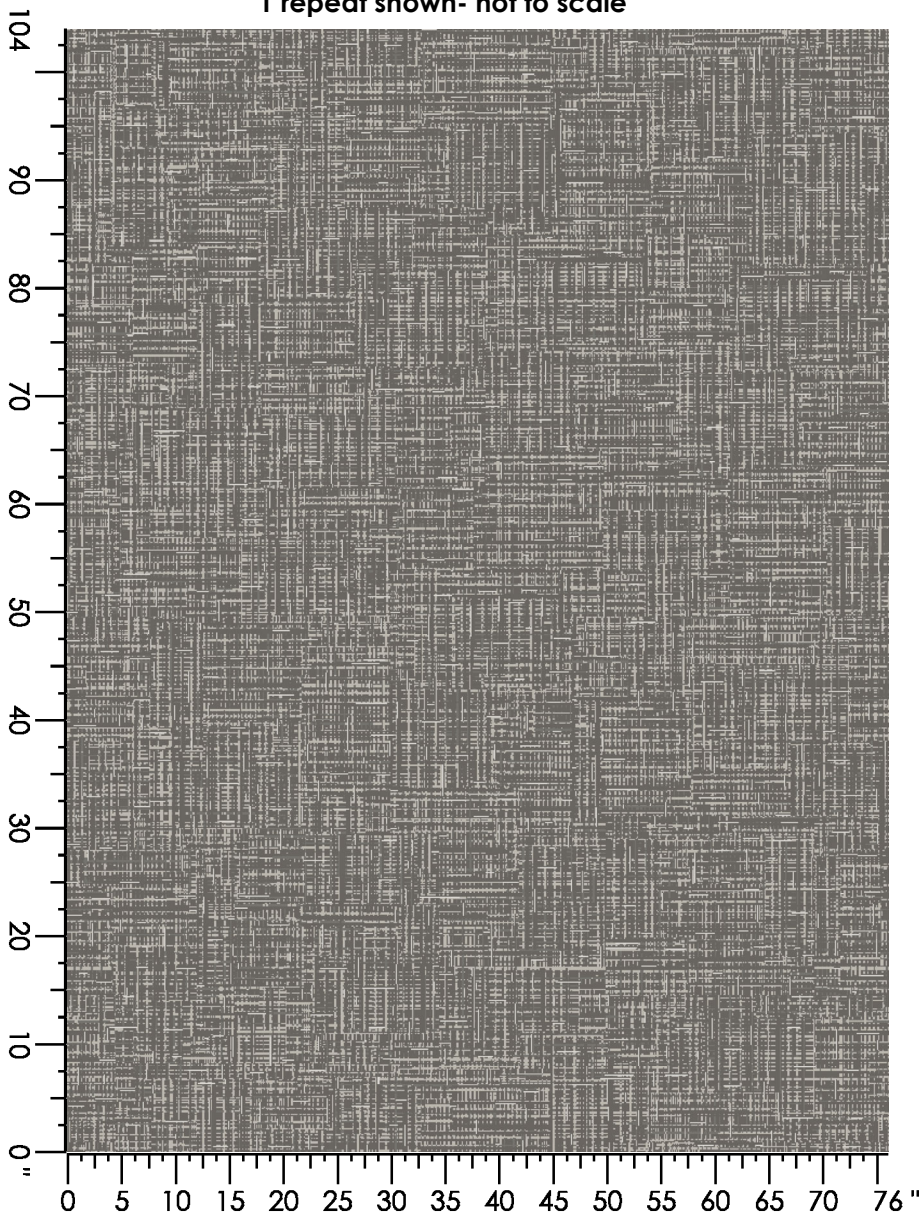
Suggested Install: Vert Ash, Quarter Turn

AC MARRIOTT CPTL

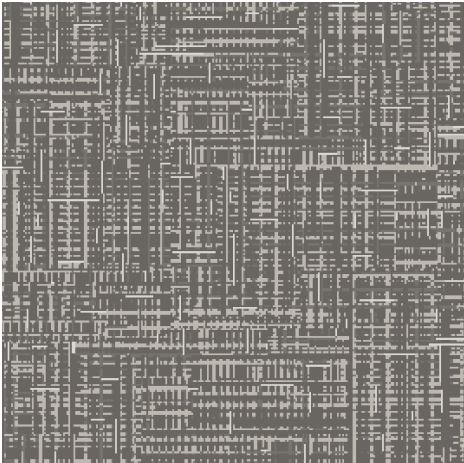
Room Type: Corridor

14	21	32	43
X429L-M T	8519L TO	8503L TO	7508L TO

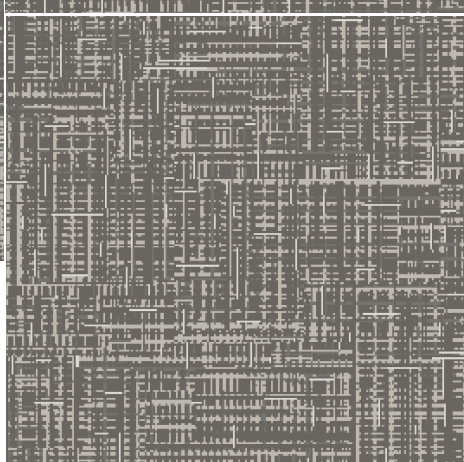
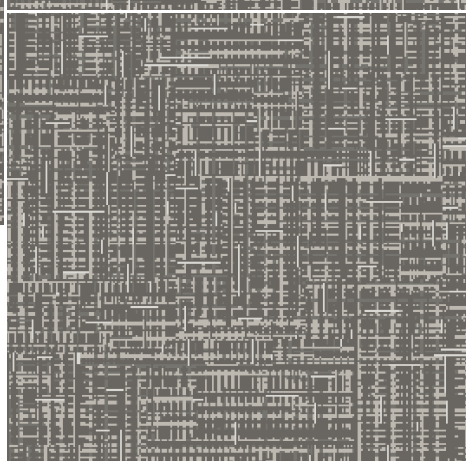
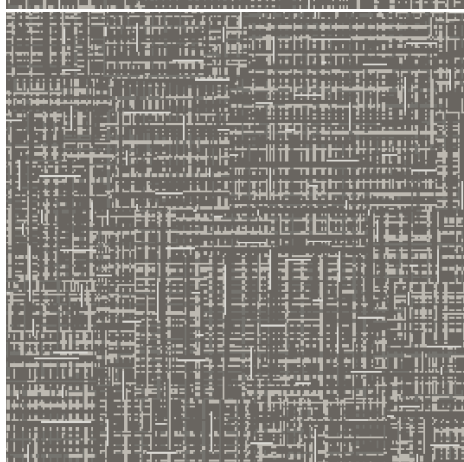
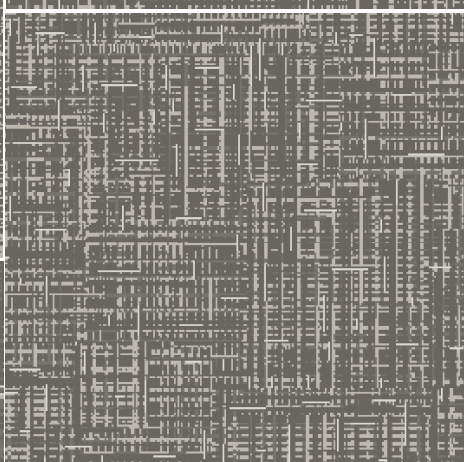
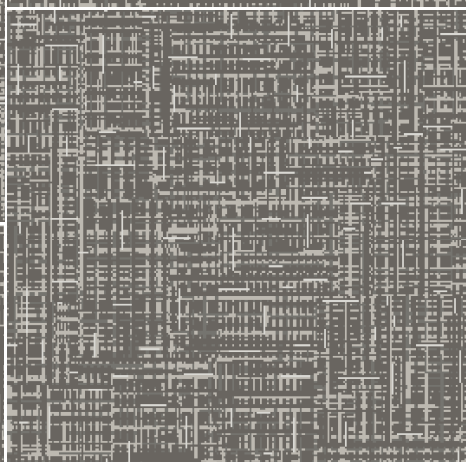
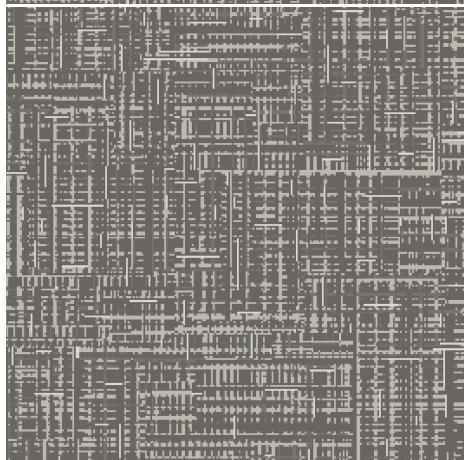
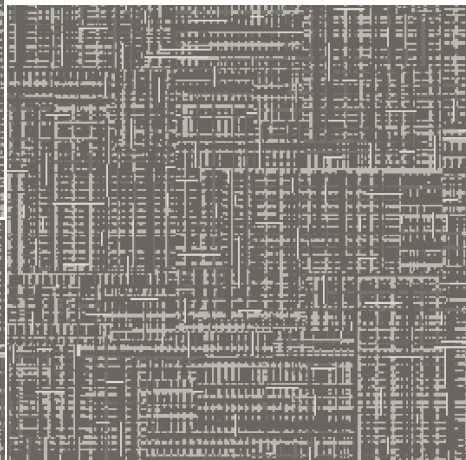
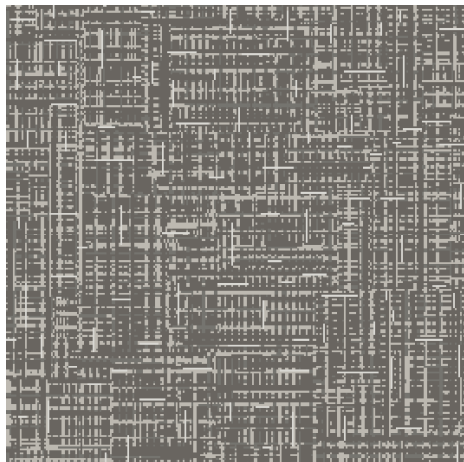
1 repeat shown- not to scale



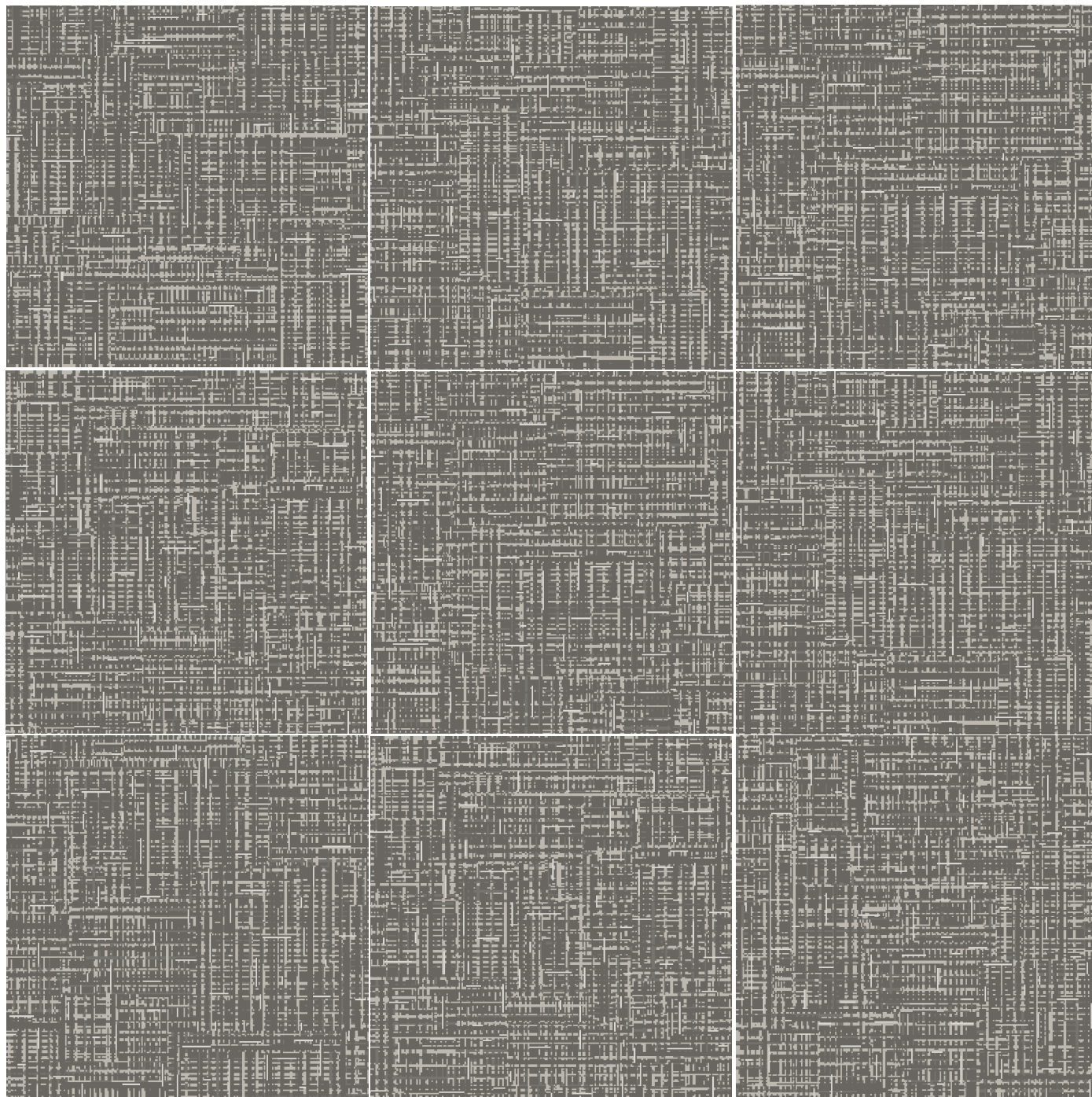
24" X 24" Random Cut Tile



Number of Samples & Notes:









AC MARRIOTT CPTL  
A0023 Color 986 Corridor

**MEDIODIA (MEDIUM) SCHEME**    **Production Tile Specifications**  
**MARRIOTT ID: A0025-112-24" X 24"**

Style Number/Color	<b>A0023 / 986</b>
Product Type	<b>Intrepid Tile</b>
Construction	<b>Multi-Level Pattern Cut/Loop</b>
Fiber	<b>Lextron Enviro-Green Nylon</b>
Dye Method	<b>Solution Dyed NHS</b>
Primary Backing	<b>Woven Polypropylene</b>
Secondary Backing	<b>Ethos w/Omnicoat</b>

#### Specifications

Size Options	<b>24" x 24" Tile</b>
Gauge	<b>1/10</b>
Stitches per Inch	<b>9</b>
Tufted Weight	<b>28 oz per sq/yd</b>
Total Weight	<b>106 oz per sq/yd</b>
Finished Pile Thickness	<b>.218" Approx.</b>
Total Thickness	<b>.343" Approx.</b>

#### Performance

Traffic Class (TARR)	<b>Heavy</b>
Pill Test	<b>Pass</b>
Radiant Panel	<b>Class I</b>
Flammability	<b>ASTM E 648 Class I</b>
Smoke Density	<b>ASTM E 662 Less than 450</b>
LEED Info	<b>Green Label Plus Certified - GLP8320</b>

**Warranty**                      **10 Year Limited Warranty**

#### Install Methods

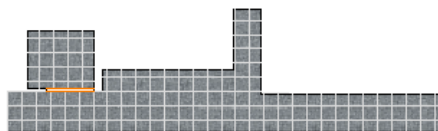
**24x24**  
**Vert Ashlar, Quarter Turn**

Enviro-Green yarn has 10% pre-consumer recycled content.  
Recommended for moderate (guestroom) carpet traffic levels.

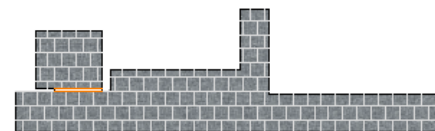
Carpet should be installed in accordance with the Carpet and Rug Institute's standard CRI-104/CRI-105.  
Pattern streaks and banding are visually apparent streaking in patterned carpet resulting from linear juxtaposition of pattern elements visible in both length and width direction.  
IT IS NOT A CARPET DEFECT, but is inherent in solution dyed graphic and cut/loop patterns.

#### Product Notes

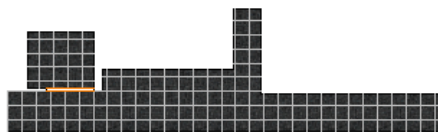
1. Specifications are subject to nominal manufacturing variances. Material supply and/or manufacturing processes may necessitate changes without notice.  
Colors may vary slightly from dye lot to dye lot.
2. U.S. Patent numbers: 4,849,267; 6,406,574, US 9,988,760 B2
3. Chair pads are recommended for optimum textural performance. Absent the use of chair pads, more intensive maintenance will be required for areas in direct contact with chair caster traffic, and some degree of appearance change is to be expected.



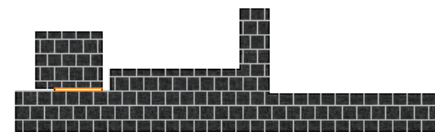
CT307-4  
23406-24-1  
QUARTER TURN



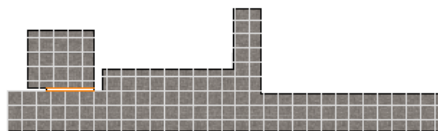
CT307-4  
23406-24-1  
VERTICAL ASHLAR



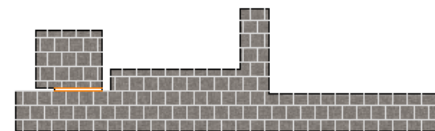
CT312-4  
23406-25-2  
QUARTER TURN



CT312-4  
23406-25-2  
VERTICAL ASHLAR



CT312-4  
23406-25-4  
QUARTER TURN



CT312-4  
23406-25-4  
VERTICAL ASHLAR

SCALE: 1/8" = 1'-0"

#### GENERAL NOTES

- 1) This drawing and designs contained herein are the sole property of Tarkett Hospitality Carpet Mills, Inc.
- 2) The red dotted lines indicate known seams. Due to roll size and unexpected conditions that may arise, adjustment seams may become necessary during installation. Locations of these seams are approximate. Actual layout may vary based on roll sizes.
- 3) All contractors using this drawing will be responsible for verifying all dimensions and package requirements. Tarkett Hospitality Carpet Mills, Inc. will not be held responsible for final package requirements.
- 4) These drawings are used to show the interior design intent only and should not be used for construction purposes.
- 5) Patterned Products require experienced and knowledgeable installation techniques. Please ensure that installers have proper equipment and are familiar with Tarkett's installation guidelines. Please contact Technical Services for questions; request a copy of the installation guidelines. Devin Knauper @ 708-501-5254 John Cox @ 708-260-3054

Red lines are indicated by red dotted lines.  
This plan must be field verified for measurement accuracy.

Rev. #	Description	Date

Approved By:  
Date:



TARKETT HOSPITALITY  
285 KRAFT DRIVE  
DALTON, GA. 30721  
(800) 871-3211

Project Name and Address

AC MARRIOTT  
PROTOTYPE

Project 11-L-04768	Sheet    1 OF 1
Development 14438	
Drawn by SUSAN JACKSON	
Date 12/02/24	
Scale 1/8" = 1'-0"	