



© Tarkett Hospitality



Cambria

CAMBRIA[®]
hotels

**Country Inn & Suites
Guestroom Broadloom
CPT-001-ALT1**

Product Information

Product Type	Broadloom
Style / Color Number	CH05B Color: 184
Construction	Multi-Level Pattern Cut/Loop
Fiber	Lextron Enviro-Green Nylon
Dye Method	100 % Solution Dyed
Primary Backing	Woven Polypropylene
Secondary Backing	Action Bac



Specifications


Size	12'
Gauge	1/10
Stitches per Inch	12
Tufted Weight	32oz per sq/yd
Finished Pile Thickness	.247 inches average
Pattern Repeat	36" x 39.27"
Total Overall Thickness	.352 inches average



Performance

Traffic Class	Heavy
(TARR) Pill Test	Pass
Radiant Panel	Class I
Flammability	ASTM E 648 Class I
Smoke Density	ASTM E 662 Less than 450
LEED Info	Green Label Plus Certified – GLP2380

Warranty **10 Year Limited Warranty**

Enviro-Green yarn has 10% pre-consumer recycled content. 
Recommended for heavy (public space) carpet traffic levels.

NOTE: Due to the manufacturing process of a tip shear product, the finished yarn weight will vary more than normal manufacturing tolerances and side match cannot be guaranteed.

Carpet should be installed in accordance with the Carpet and Rug Institute's standard CRI-104.
Carpet must be over manufacturer's recommended pad.

Pattern streaks and banding are visually apparent streaking in patterned carpet resulting from linear juxtaposition of pattern elements visible in both length and width direction.
IT IS NOT A CARPET DEFECT, but is inherent in solution dyed graphic and cut/loop patterns.

All Specifications subject to normal manufacturing tolerance.

**Country Inn & Suites
Guestroom Carpet Tile
CP-001-ALT2**

Product Information

Style / Color Number	CH05T / 184
Product Type	Carpet Tile
Construction	Multi-Level Pattern Cut/Loop
Fiber	Lextron Enviro-Green Nylon
Dye Method	100 % Solution Dyed Nylon
Primary Backing	Woven PET
Secondary Backing	Ethos with Omnicoat



Specifications

Size	24" x 24"
Gauge	1/10
Stitches per Inch Tufted	9
Weight	22oz per sq/yd
Total Weight Finished	100 oz
Pile Thickness Pattern	.225 inches
Repeat	N/A
Installation Method	Quarter Turn

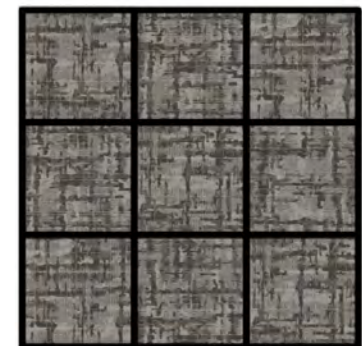


Performance

Traffic Class (TARR) Pill	Heavy
Test	Pass
Radiant Panel	Class I
Flammability	ASTM E 648 Class I
Smoke Density	ASTM E 662 Less than 450

LEED Info **Green Label Plus Certified – GLP8320**

Warranty **10 Year Limited Warranty**



**24" X 24" RANDOM CUT TILE
QUARTER TURN INSTALLATION**

Enviro-Green yarn has 10% pre-consumer recycled content.



Recommended for heavy (public space) carpet traffic levels.

NOTE: Due to the manufacturing process of a tip shear product, the finished yarn weight will vary more than normal manufacturing tolerances and side match cannot be guaranteed.

Carpet should be installed in accordance with the Carpet and Rug Institute's standard CRI-104. Carpet must be over manufacturer's recommended pad.

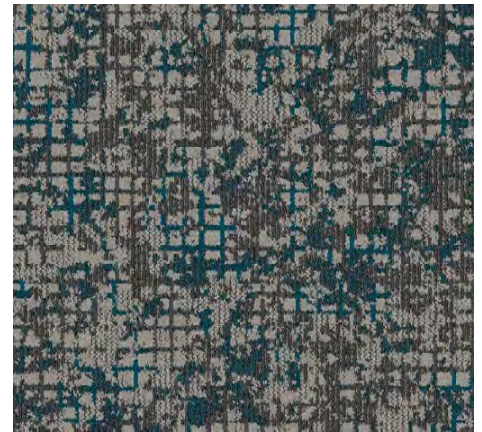
Pattern streaks and banding are visually apparent streaking in patterned carpet resulting from linear juxtaposition of pattern elements visible in both length and width direction.
IT IS NOT A CARPET DEFECT, but is inherent in solution dyed graphic and cut/loop patterns.

All Specifications subject to normal manufacturing tolerance.

Country Inn & Suites Corridor
CPT-002-ALT1

Product Information

Product Type	Broadloom
Style / Color Number	CH05B / Color: 168
Construction	Multi-Level Pattern Cut/Loop
Fiber	Lextron Enviro-Green Nylon
Dye Method	100 % Solution Dyed
Primary Backing	Woven Polypropylene
Secondary Backing	Action Bac



Specifications


Size	12'
Gauge	1/10
Stitches per Inch	13
Tufted Weight	36oz per sq/yd
Finished Pile Thickness	.281 inches average
Pattern Repeat	72" x 72.01"
Total Overall Thickness	.444 inches average



Performance

Traffic Class	Heavy
(TARR) Pill Test	Pass
Radiant Panel	Class I
Flammability	ASTM E 648 Class I
Smoke Density	ASTM E 662 Less than 450
LEED Info	Green Label Plus Certified – GLP2380

Warranty **10 Year Limited Warranty**

Enviro-Green yarn has 10% pre-consumer recycled content. 
Recommended for heavy (public space) carpet traffic levels.

NOTE: Due to the manufacturing process of a tip shear product, the finished yarn weight will vary more than normal manufacturing tolerances and side match cannot be guaranteed.

Carpet should be installed in accordance with the Carpet and Rug Institute's standard CRI-104.
 Carpet must be over manufacturer's recommended pad.

Pattern streaks and banding are visually apparent streaking in patterned carpet resulting from linear juxtaposition of pattern elements visible in both length and width direction.
IT IS NOT A CARPET DEFECT, but is inherent in solution dyed graphic and cut/loop patterns.

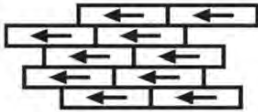
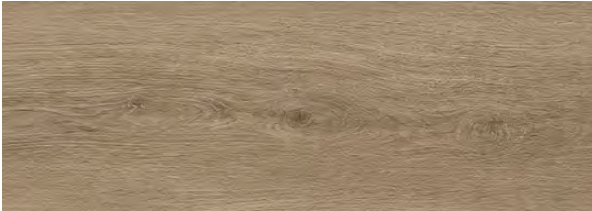
All Specifications subject to normal manufacturing tolerance.

**Country Inn & Suites
Resilient Flooring & Wall Base**

Resilient Flooring Product Information

Choice Spec# LVT-001 Guestroom (Optional)

Style Number **ACCRE-0008-7X48-VT**
 Color **0009 Ashwood Oak**
 Product Type **Click and Drop LVT**
 Size **7" W x 48" L**
 Carton Size **23.64 sq ft per carton**
 Installation Pattern: **Stagger**



INSTALL: STAGGER

Resilient Wall Base Product Information

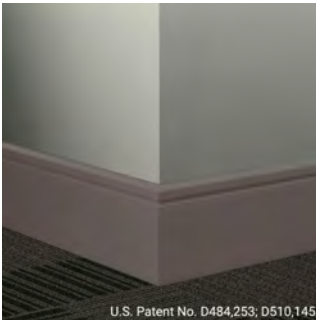
Choice Spec# RB-001 Resilient Base @ Guestroom

Style Number **MW-TA8-F**
 Color **TA8 Welsh Castle**
 Product Type **Millwork Reveal Wall Base**
 Size **4.25"H x 0.25" x 8'L**
 Carton Size **64ft per carton**
 Installation **Direct Glue**



Choice Spec# RB-002 Resilient Base @ Corridor

Style Number **MW-47-F**
 Color **47 Brown**
 Product Type **Reveal - Millwork Wall Base**
 Size **4.25"H x 0.25" Thick x 8'L**
 Carton Size **64 ft per carton**
 Installation **Direct Glue**



Every step matters

Sustainability

Every Step Matters. Tarkett's holistic approach to sustainability is woven into the fabric of how we do business and sits at the heart of our day-to-day decision making. For decades, we've scrutinized every detail of our business for its impact on resources such as soil, water, air, and climate—because when you're trailblazing a more sustainable future, every step matters.

Corporate Transparency is fundamental to our values and the way we do business. Third-party assessments serve as a testament to our performance, earning the trust of customers and partners.



EcoVadis

Tarkett is proud to have been awarded a Platinum sustainability rating by EcoVadis with a score of 81/100, which places us in the top 1% of rated companies. EcoVadis assesses CSR policies, actions, and results across four themes and 21 CSR criteria: environment, labor and human rights, ethics, and sustainable procurement.



Carbon Disclosure Project (CDP)

Tarkett's "A" score for climate change impact positions us at the leadership level of CDP's grading system.



Science Based Targets Initiative

Tarkett's 2030 carbon reduction targets are approved by the Science Based Targets initiative (SBTi). We have two 2030 targets guiding nearly every sustainability initiative at Tarkett:

1. Reduce carbon emissions by 30% across Scopes 1, 2, and 3.
2. Increase recycled content in our products from 18% in 2019 to 30% by 2030.



Start your next project with ReStart®

We're committed to creating a circular economy where nothing goes to waste. Take part by starting your next project with Tarkett's ReStart® flooring take-back and recycling program. The ReStart program will accept any type of flooring from any manufacturer. Join us as we innovate and collaborate towards a healthier future for this generation and generations to come.

Contact Us

Firstname Lastname Title

Goes Here

ChoiceOrders@tarkett.com

800-871-3211



Tarkett Hospitality
285 Kraft Drive
Dalton, GA 30721
800.871.3211
www.tarketthospitality.com