



© Tarkett Hospitality



Rise & Shine: City Scheme

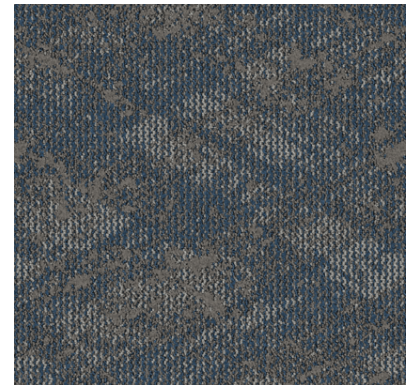




**Comfort Inn - City Scheme  
Guestrooms Carpet Tile  
CP-001-ALT2**

**Product Information**

Style / Color Number	<b>I375T / 860N</b>
Product Type	<b>Carpet Tile</b>
Construction	<b>Multi-Level Pattern Cut/Loop</b>
Fiber	<b>Lextron Enviro-Green Nylon</b>
Dye Method Primary	<b>100 % Solution Dyed Nylon</b>
Backing Secondary	<b>Woven PET</b>
Backing	<b>Ethos with Omnicoat</b>



**Specifications**

Size	<b>24" x 24"</b>
Gauge	<b>1/10</b>
Stitches per Inch Tufted	<b>9</b>
Weight	<b>22oz per sq/yd</b>
Total Weight Finished	<b>119 oz</b>
Pile Thickness Pattern	<b>.218 inches</b>
Repeat	<b>N/A</b>
Installation Method	<b>Quarter Turn</b>

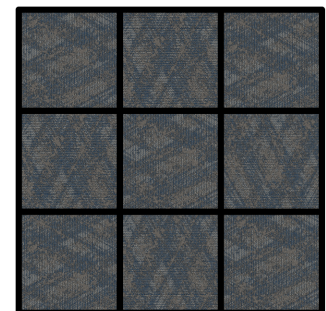


**Performance**


Traffic Class (TARR) Pill	<b>Heavy</b>
Test	<b>Pass</b>
Radiant Panel	<b>Class I</b>
Flammability	<b>ASTM E 648 Class I</b>
Smoke Density	<b>ASTM E 662 Less than 450</b>

LEED Info **Green Label Plus Certified – GLP8320**

**Warranty** **10 Year Limited Warranty**



**24" X 24" RANDOM CUT TILE  
QUARTER TURN INSTALLATION**

**Enviro-Green yarn has 10% pre-consumer recycled content.**   
**Recommended for heavy (public space) carpet traffic levels.**

**NOTE:** Due to the manufacturing process of a tip shear product, the finished yarn weight will vary more than normal manufacturing tolerances and side match cannot be guaranteed.

Carpet should be installed in accordance with the Carpet and Rug Institute's standard CRI-104.  
Carpet must be over manufacturer's recommended pad.

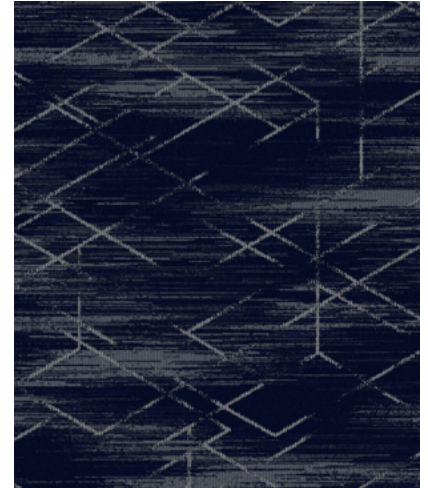
Pattern streaks and banding are visually apparent streaking in patterned carpet resulting from linear juxtaposition of pattern elements visible in both length and width direction.  
**IT IS NOT A CARPET DEFECT**, but is inherent in solution dyed graphic and cut/loop patterns.

All Specifications subject to normal manufacturing tolerance.

**Comfort Inn - City Scheme**  
**Corridor Broadloom**  
**CPT-002-CT-ALT1**

**Product Information**

Product Type	<b>Broadloom</b>
Style / Color Number	<b>I366B / Color: 892N</b>
Construction	<b>Multi-Level Pattern Cut/Loop</b>
Fiber	<b>Lextron Enviro-Green Nylon</b>
Dye Method	<b>100 % Solution Dyed</b>
Primary Backing	<b>Woven Polypropylene</b>
Secondary Backing	<b>Action Bac</b>



**Specifications**


Size	<b>15'</b>
Gauge	<b>1/10</b>
Stitches per Inch	<b>12</b>
Tufted Weight	<b>36oz per sq/yd</b>
Finished Pile Thickness	<b>.225 inches average</b>
Pattern Repeat	<b>90" x 140.03"</b>
Total Overall Thickness	<b>.376 inches average</b>



**Performance**

Traffic Class	<b>Heavy</b>
(TARR) Pill Test	<b>Pass</b>
Radiant Panel	<b>Class I</b>
Flammability	<b>ASTM E 648 Class I</b>
Smoke Density	<b>ASTM E 662 Less than 450</b>
LEED Info	<b>Green Label Plus Certified – GLP2380</b>

**Warranty** **10 Year Limited Warranty**

**Enviro-Green yarn has 10% pre-consumer recycled content.**   
**Recommended for heavy (public space) carpet traffic levels.**

**NOTE:** Due to the manufacturing process of a tip shear product, the finished yarn weight will vary more than normal manufacturing tolerances and side match cannot be guaranteed.

Carpet should be installed in accordance with the Carpet and Rug Institute's standard CRI-104.  
 Carpet must be over manufacturer's recommended pad.

Pattern streaks and banding are visually apparent streaking in patterned carpet resulting from linear juxtaposition of pattern elements visible in both length and width direction.  
**IT IS NOT A CARPET DEFECT**, but is inherent in solution dyed graphic and cut/loop patterns.

All Specifications subject to normal manufacturing tolerance.



**Comfort Inn - City Scheme**  
**Lobby Carpet Inset**  
**CPT-003**

**Product Information**

Product Type	<b>Broadloom</b>
Style / Color Number	<b>I362B / Color: 468N</b>
Construction	<b>Multi-Level Pattern Cut/Loop</b>
Fiber	<b>Lextron Enviro-Green Nylon</b>
Dye Method	<b>100 % Solution Dyed</b>
Primary Backing	<b>Woven Polypropylene</b>
Secondary Backing	<b>Action Bac</b>



**Specifications**


Size	<b>15'</b>
Gauge	<b>1/10</b>
Stitches per Inch	<b>14</b>
Tufted Weight	<b>36oz per sq/yd</b>
Finished Pile Thickness	<b>.225 inches average</b>
Pattern Repeat	<b>90" x 86.35"</b>
Total Overall Thickness	<b>.376 inches average</b>



**Performance**

Traffic Class	<b>Heavy</b>
(TARR) Pill Test	<b>Pass</b>
Radiant Panel	<b>Class I</b>
Flammability	<b>ASTM E 648 Class I</b>
Smoke Density	<b>ASTM E 662 Less than 450</b>
LEED Info	<b>Green Label Plus Certified – GLP2380</b>

**Warranty** **10 Year Limited Warranty**

**Enviro-Green yarn has 10% pre-consumer recycled content.**   
**Recommended for heavy (public space) carpet traffic levels.**

**NOTE:** Due to the manufacturing process of a tip shear product, the finished yarn weight will vary more than normal manufacturing tolerances and side match cannot be guaranteed.

Carpet should be installed in accordance with the Carpet and Rug Institute's standard CRI-104.  
 Carpet must be over manufacturer's recommended pad.

Pattern streaks and banding are visually apparent streaking in patterned carpet resulting from linear juxtaposition of pattern elements visible in both length and width direction.  
**IT IS NOT A CARPET DEFECT**, but is inherent in solution dyed graphic and cut/loop patterns.

**All Specifications subject to normal manufacturing tolerance.**

**Comfort Inn - City Scheme  
Meeting Room  
CPT-004-CT-RENO**

**Product Information**

Product Type	<b>Broadloom</b>
Style / Color Number	<b>I362B / Color: 468N</b>
Construction	<b>Multi-Level Pattern Cut/Loop</b>
Fiber	<b>Lextron Enviro-Green Nylon</b>
Dye Method	<b>100 % Solution Dyed</b>
Primary Backing	<b>Woven Polypropylene</b>
Secondary Backing	<b>Action Bac</b>



**Specifications**


Size	<b>15'</b>
Gauge	<b>1/10</b>
Stitches per Inch	<b>14</b>
Tufted Weight	<b>36oz per sq/yd</b>
Finished Pile Thickness	<b>.225 inches average</b>
Pattern Repeat	<b>90" x 86.35"</b>
Total Overall Thickness	<b>.376 inches average</b>



**Performance**

Traffic Class	<b>Heavy</b>
(TARR) Pill Test	<b>Pass</b>
Radiant Panel	<b>Class I</b>
Flammability	<b>ASTM E 648 Class I</b>
Smoke Density	<b>ASTM E 662 Less than 450</b>
LEED Info	<b>Green Label Plus Certified – GLP2380</b>

**Warranty** **10 Year Limited Warranty**

**Enviro-Green yarn has 10% pre-consumer recycled content.**   
**Recommended for heavy (public space) carpet traffic levels.**

**NOTE:** Due to the manufacturing process of a tip shear product, the finished yarn weight will vary more than normal manufacturing tolerances and side match cannot be guaranteed.

Carpet should be installed in accordance with the Carpet and Rug Institute's standard CRI-104.  
 Carpet must be over manufacturer's recommended pad.

Pattern streaks and banding are visually apparent streaking in patterned carpet resulting from linear juxtaposition of pattern elements visible in both length and width direction.  
**IT IS NOT A CARPET DEFECT**, but is inherent in solution dyed graphic and cut/loop patterns.

All Specifications subject to normal manufacturing tolerance.

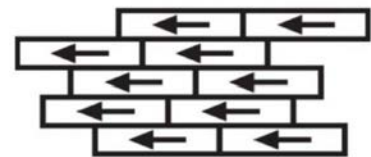
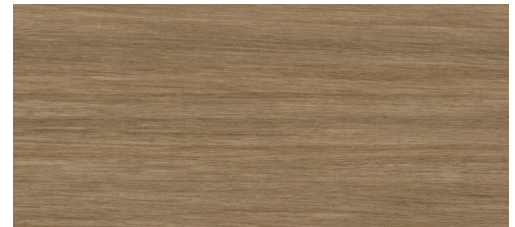


**Comfort Inn - City Scheme  
Resilient Flooring**

**Resilient Flooring Product Information**

**Choice Spec# LVT-001 Guestroom (Optional)**

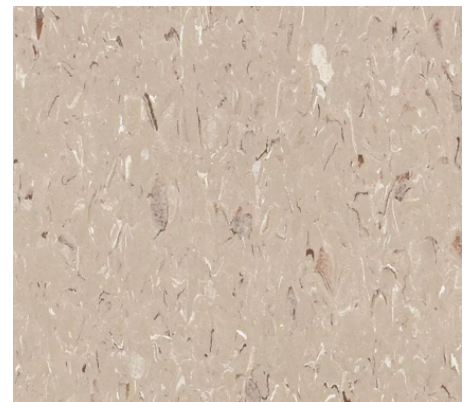
Style Number	<b>Even Plane: EPMIN</b>
Color	<b>Minimal Wood 007 Natural</b>
Product Type	<b>LVT</b>
Size	<b>9.8" W x 39.4" L</b>
Carton Size	<b>32.3 sq ft per carton</b>
Installation Pattern:	<b>Stagger</b>



**INSTALL: STAGGER**

**Choice Spec# VCT-001 VCT @ Back of House**

Style Number	<b>VCT II</b>
Color	<b>593 Mushroom</b>
Product Type	<b>Vinyl Composition Tile</b>
Size	<b>12" x 12" x 1/8" Thick</b>
Carton Size	<b>45 sq ft per carton (45 tiles/carton)</b>



**Comfort Inn - City Scheme  
Wall Base Options**

**Resilient Wall Base Product Information**

**Choice Spec# RB-001 Resilient Base @ Guestroom**

Style Number **MW-32-F**  
 Color **32 Pebble**  
 Product Type **Reveal - Millwork Wall Base**  
 Size **4"-1/4"H x .250" Thick x 8 ft. Lengths**  
 Carton Size **64 ft per carton**  
 Installation **Direct Glue**



**Choice Spec# RB-002 Resilient Base @ Corridor**

Style Number **MW-TA5-F**  
 Color **TA5 Colonial Grey**  
 Product Type **Reveal - Millwork Wall Base**  
 Size **4"-1/4"H x .250" Thick x 8 ft. Lengths**  
 Carton Size **64 ft per carton**  
 Installation **Direct Glue**



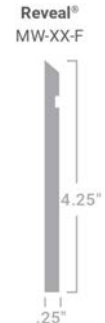
**Choice Spec# RB-003 Resilient Base @ Lobby / Breakfast / Flex-Meeting / BOH**

Style Number **MW-121-F**  
 Color **121 Cement**  
 Product Type **Reveal - Millwork Wall Base**  
 Size **4"-1/4"H x .250" Thick x 8 ft. Lengths**  
 Carton Size **64 ft per carton**  
 Installation **Direct Glue**



**Choice Spec# RB-004 Resilient Base @ Exercise**

Style Number **MW-199-F**  
 Color **199 Dockside**  
 Product Type **Reveal - Millwork Wall Base**  
 Size **4"-1/4"H x .250" Thick x 8 ft. Lengths**  
 Carton Size **64 ft per carton**  
 Installation **Direct Glue**



# Every step matters

Sustainability

*Every Step Matters. Tarkett's holistic approach to sustainability is woven into the fabric of how we do business and sits at the heart of our day-to-day decision making. For decades, we've scrutinized every detail of our business for its impact on resources such as soil, water, air, and climate—because when you're trailblazing a more sustainable future, every step matters.*

**Corporate Transparency** is fundamental to our values and the way we do business. Third-party assessments serve as a testament to our performance, earning the trust of customers and partners.



#### **EcoVadis**

Tarkett is proud to have been awarded a Platinum sustainability rating by EcoVadis with a score of 81/100, which places us in the top 1% of rated companies. EcoVadis assesses CSR policies, actions, and results across four themes and 21 CSR criteria: environment, labor and human rights, ethics, and sustainable procurement.



#### **Carbon Disclosure Project (CDP)**

Tarkett's "A" score for climate change impact positions us at the leadership level of CDP's grading system.



#### **Science Based Targets Initiative**

Tarkett's 2030 carbon reduction targets are approved by the Science Based Targets initiative (SBTi). We have two 2030 targets guiding nearly every sustainability initiative at Tarkett:

1. Reduce carbon emissions by 30% across Scopes 1, 2, and 3.
2. Increase recycled content in our products from 18% in 2019 to 30% by 2030.



**Start your next project with ReStart®**

We're committed to creating a circular economy where nothing goes to waste. Take part by starting your next project with Tarkett's ReStart® flooring take-back and recycling program. The ReStart program will accept any type of flooring from any manufacturer. Join us as we innovate and collaborate towards a healthier future for this generation and generations to come.

# Contact Us

---

Firstname Lastname Title

Goes Here

ChoiceOrders@tarkett.com

800-871-3211



## Tarkett Hospitality

285 Kraft Drive  
Dalton, GA 30721  
800.871.3211

[www.tarketthospitality.com](http://www.tarketthospitality.com)