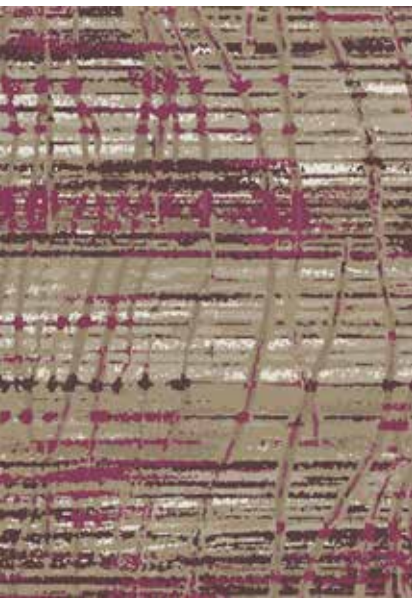
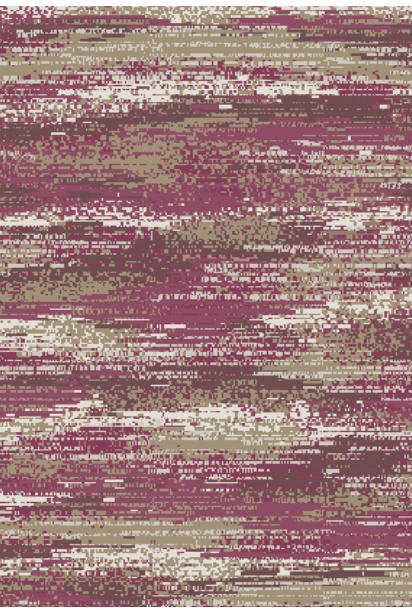


HILTON GARDEN INN

Revive Scheme

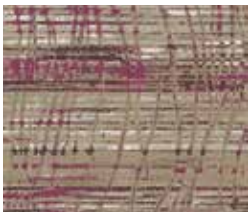




- Product Type: Corridor
- Style Number: HG16B
(15' option: HG11B/110)
- Color Number: 110
- Item Number: C-11
- Specs: 36 oz. – 12' Width
- Pattern Repeat: 36" x 54.86"



- Product Type: Back of House
- Style Number: HG15B
(15' available upon request)
- Color Number: 150
- Specs: 32 oz. – 12' Width
- Pattern Repeat: 36" x 59"



- Product Type: Meeting Room
- Style Number: HG17B
(15' option: HG12B/120)
- Color Number: 120
- Item Number: C-13
- Specs: 36 oz. – 12' Width
- Pattern Repeat: 72" x 98.29"



- Product Type: Millwork Profile Wall Base
- Style Number: Monument MW-55-S4
- Item Number: B-01
- Color/Finish: 55 Silver Grey
- Specs: 4.0"H x .250"D
- Area: Guest Rooms



- Product Type: Lobby
- Style Number: HG18B
(15' option: HG13B/130)
- Color Number: 130
- Item Number: C-10
- Specs: 36 oz. – 12' Width
- Pattern Repeat: 72" x 72"



- Product Type: Millwork Profile Wall Base
- Style Number: Monument MW-29-S4
- Item Number: B-06
- Color/Finish: 29 Moon Rock
- Specs: 4.0" H x .250"D
- Area: Public Space, Fitness Center



- Product Type: Guest Room
- Style Number: HG19B
(12' W option: HG14B/140)
- Color Number: 140
- Item Number: C-01
- Specs: 32 oz. – 13' Width
- Pattern Repeat: 39" x 41.60"

Revive Scheme
CORRIDOR, BROADLOOM

C-11 Supplier C

Revive Scheme

CORRIDOR, BROADLOOM

Issue Date: October 2019
Area Name: Public Area- Corridor / Elevator Lobby
Item Number: C-11 Supplier C / C-12 Supplier C

Manufacturer: Tarkett
Address: 285 Kraft Drive
Dalton, GA 30721
Phone: 706.277.3000
Contact: Jackie Passaro
E-mail: jackie.passaro@tarkett.com
Web: www.tarketta.com

Description: Carpet @ Corridor - Broadloom (CYP)
Style Number: HG16B
Color: 110
Width: 12' (15' option: HG11B/110 available upon request)
Repeat: 36"W x 54.86"L
Type: Intrepid multi-level loop tip-shear
Content: Lextron Enviro-Green SD Nylon
Weight: 36 oz. tufted face weight
Primary Backing: Woven Polypropylene
Secondary Backing: Unitary Action Bac
Pile Height: .281" average pile thickness
Gauge: 1/10"
Stitches Per Sq Inch: 10
Dye Method: Solution Dyed
Installation Method: Broadloom
Flame Requirements: Meets or exceeds requirement Class 1



8520

8523

2511

2508

Notes:

Manufacturer to confirm the carpet meets Hilton Design and Construction standards as noted in section 2514.03.

Instructions:

- Installer to provide all materials and equipment for complete installation, seaming diagrams, and full carpet layouts for all areas per manufacturer's recommendation.
- All quantities to be verified by installer.
- All interior design submittals MUST be presented to projecthub.hilton.com for review prior to implementation.

No printed material contained here-in may be reproduced without written permission of Tarkett Hospitality. Due to variations in monitors, printers and light sources, we cannot guarantee that the colors in this image will be an exact match to your colors. 285 Kraft Drive Dalton, GA 30721

Revive Scheme
PUBLIC AREA, MEETING ROOM

C-13 Supplier C

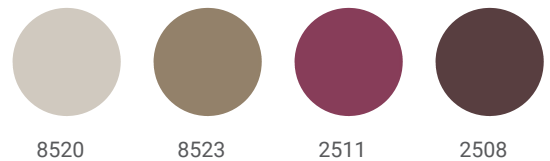
Revive Scheme

PUBLIC AREA, MEETING ROOM

Issue Date: October 2019
Area Name: Public Area- Meeting Room
Item Number: C-13 Supplier C

Manufacturer: Tarkett
Address: 285 Kraft Drive
Dalton, GA 30721
Phone: 706.277.3000
Contact: Jackie Passaro
E-mail: jackie.passaro@tarkett.com
Web: www.tarketta.com

Description: Carpet @ Meeting Room - Broadloom (CYP)
Style Number: HG17B
Color: 120
Width: 12' (15' option: HG12B/120 available upon request)
Repeat: 72"W x 98.29"L
Type: Intrepid multi-level loop tip-shear
Content: Lextron Enviro-Green SD Nylon
Weight: 36 oz. tufted face weight
Primary Backing: Woven Polypropylene
Secondary Backing: Unitary Action Bac
Pile Height: .281" average pile thickness
Gauge: 1/10"
Stitches Per Sq Inch: 10
Dye Method: Solution Dyed
Installation Method: Broadloom
Flame Requirements: Meets or exceeds requirement Class 1



Notes:

Manufacturer to confirm the carpet meets Hilton Design and Construction standards as noted in section 2514.03.

Instructions:

- Installer to provide all materials and equipment for complete installation, seaming diagrams, and full carpet layouts for all areas per manufacturer's recommendation.
- All quantities to be verified by installer.
- All interior design submittals MUST be presented to projecthub.hilton.com for review prior to implementation.

No printed material contained here-in may be reproduced without written permission of Tarkett Hospitality. Due to variations in monitors, printers and light sources, we cannot guarantee that the colors in this image will be an exact match to your colors. 285 Kraft Drive Dalton, GA 30721

Revive Scheme
PUBLIC AREA, LOBBY

C-10 Supplier C

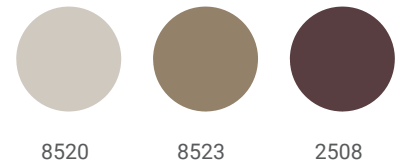
Revive Scheme

PUBLIC AREA, LOBBY

Issue Date: October 2019
Area Name: Public Area- Lobby
Item number: C-10 Supplier C

Manufacturer: Tarkett
Address: 285 Kraft Drive
Dalton, GA 30721
Phone: 706.277.3000
Contact: Jackie Passaro
E-mail: jackie.passaro@tarkett.com
Web: www.tarkettna.com

Description: Carpet @ Lobby - Broadloom (CYP)
Style Number: HG18B
Color: 130
Width: 12' (15' option: HG13B/130)available upon request)
Repeat: 72"W x 72"L
Type: Intrepid multi-level loop tip-shear
Content: Lextron Enviro-Green SD Nylon
Weight: 36 oz. tufted face weight
Primary Backing: Woven Polypropylene
Secondary Backing: Unitary Action Bac
Pile Height: .281" average pile thickness
Gauge: 1/10"
Stitches Per Sq Inch: 10
Dye Method: Solution Dyed
Installation Method: Broadloom
Flame Requirements: Meets or exceeds requirement Class 1



Notes:

Manufacturer to confirm the carpet meets Hilton Design and Construction standards as noted in section 2514.03.

Instructions:

- Installer to provide all materials and equipment for complete installation, seaming diagrams, and full carpet layouts for all areas per manufacturer's recommendation.
- All quantities to be verified by installer.
- All interior design submittals MUST be presented to projecthub.hilton.com for review prior to implementation.

No printed material contained here-in may be reproduced without written permission of Tarkett Hospitality. Due to variations in monitors, printers and light sources, we cannot guarantee that the colors in this image will be an exact match to your colors. 285 Kraft Drive Dalton, GA 30721

Revive Scheme
GUEST ROOM, BROADLOOM

C-01 Supplier C

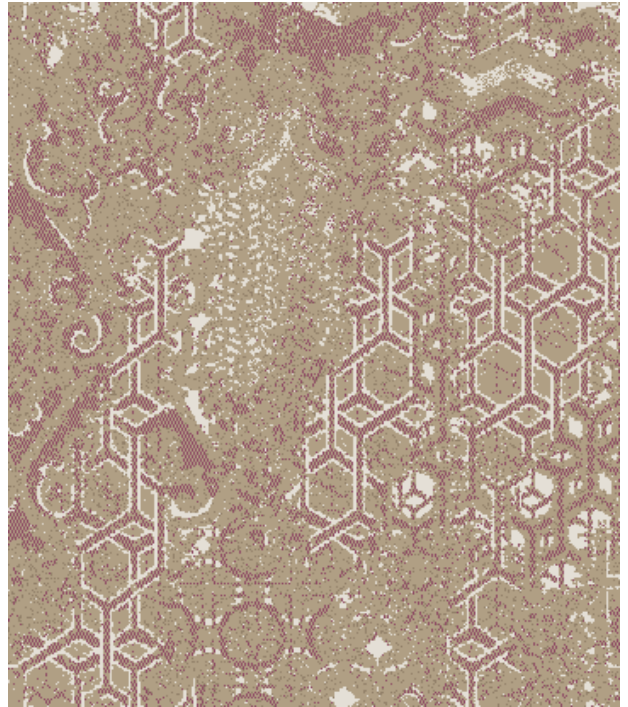
Revive Scheme

GUEST ROOM, BROADLOOM

Issue Date: October 2019
Area Name: Guest Rooms
Item Number: C-01 Supplier C

Manufacturer: Tarkett
Address: 285 Kraft Drive
Dalton, GA 30721
Phone: 706.277.3000
Contact: Jackie Passaro
E-mail: jackie.passaro@tarkett.com
Web: www.tarkettna.com

Description: Carpet @ Guest Rooms - Broadloom (CYP)
Style Number: HG19B
Color: 140
Width: 13' (12' W option: HG14B/140)
Repeat: 39"W x 41.60"L
Type: Intrepid multi-level loop tip-shea
Content: Lextron Enviro-Green SD Nylon
Weight: 32 oz. tufted face weight
Primary Backing: Woven Polypropylene
Secondary Backing: Unitary Action Bac
Pile Height: .281" average pile thickness
Gauge: 1/10"
Stitches Per Sq Inch: 10
Dye Method: Solution Dyed
Installation Method: Broadloom
Flame Requirements: Meets or exceeds requirement Class 1



8523



8520



2511

Notes:

Manufacturer to confirm the carpet meets Hilton Design and Construction standards as noted in section 2514.03.

Instructions:

- Installer to provide all materials and equipment for complete installation, seaming diagrams, and full carpet layouts for all areas per manufacturer's recommendation.
- All quantities to be verified by installer.
- All interior design submittals MUST be presented to projecthub.hilton.com for review prior to implementation.

No printed material contained here-in may be reproduced without written permission of Tarkett Hospitality. Due to variations in monitors, printers and light sources, we cannot guarantee that the colors in this image will be an exact match to your colors. 285 Kraft Drive Dalton, GA 30721

Revive Scheme

GUEST ROOM, BROADLOOM



Revive Scheme

BACK OF HOUSE, BROADLOOM

C-14 Supplier C

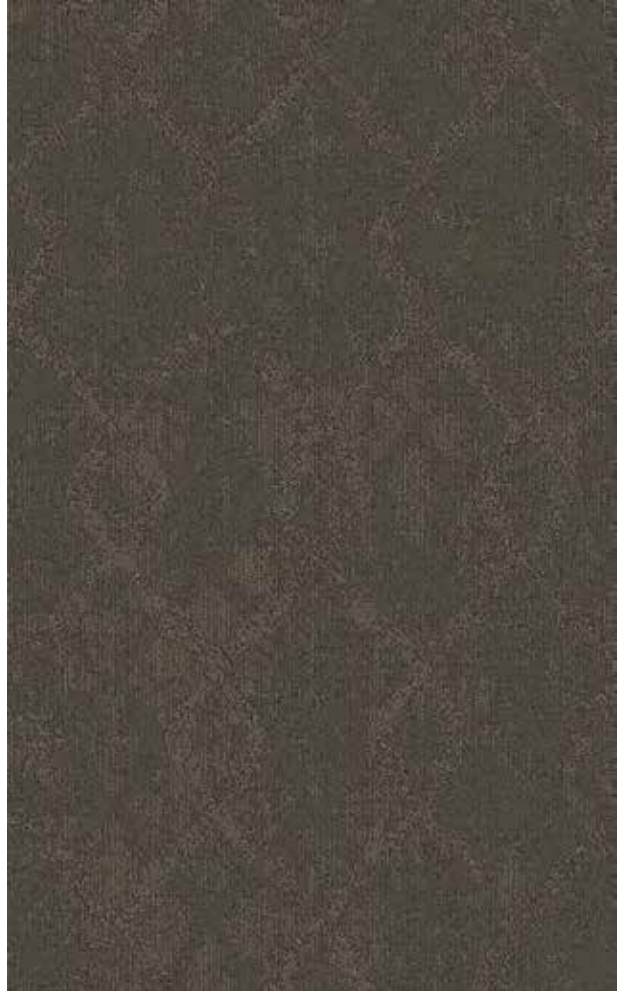
Revive Scheme

BACK OF HOUSE, BROADLOOM

Issue Date: October 2019
Area Name: Back of House
Item Number: C-14 Supplier C

Manufacturer: Tarkett
Address: 285 Kraft Drive
Dalton, GA 30721
Phone: 706.277.3000
Contact: Jackie Passaro
E-mail: jackie.passaro@tarkett.com
Web: www.tarkettna.com

Description: Carpet @ Back of House - Broadloom (Tufted)
Style Number: HG15B (15' available upon request)
Color: 150
Width: 12'
Repeat: 36"W x 59"L
Type: DYN Loop Tip-Sheared
Content: Lextron Enviro-Green SD Nylon
Weight: 32 oz. tufted face weight
Primary Backing: Woven Polypropylene
Secondary Backing: Action Bac
Pile Height: .281" average pile thickness
Gauge: 1/10"
Stitches Per Sq Inch: 10
Dye Method: Solution Dyed
Installation Method: Broadloom
Flame Requirements: Meets or exceeds requirement Class 1



Notes:

Manufacturer to confirm the carpet meets Hilton Design and Construction standards as noted in section 2514.03.

Instructions:

- Installer to provide all materials and equipment for complete installation, seaming diagrams, and full carpet layouts for all areas per manufacturer's recommendation.
- All quantities to be verified by installer.
- All interior design submittals MUST be presented to projecthub.hilton.com for review prior to implementation.

No printed material contained here-in may be reproduced without written permission of Tarkett Hospitality. Due to variations in monitors, printers and light sources, we cannot guarantee that the colors in this image will be an exact match to your colors. 285 Kraft Drive Dalton, GA 30721



8524



8526

Revive Scheme

GUEST ROOMS, WALL BASE

Issue Date: October 2019

Area Name: Guest Rooms

Item Number: B-01

Manufacturer: Tarkett

Address: 285 Kraft Drive
Dalton, GA 30721

Phone: 706.277.3000

Contact: Jackie Passaro

E-mail: Jackie.Passaro@tarkett.com

Web: www.tarketta.com

Description: Millwork Profile Wall Base

Product: Monument MW-55-S4

Color/Finish: 55 Silver Grey

Size/Dimension: 4" H x .250"D

Material: Proprietary thermoplastic rubber formulation
by manufacturer

Notes:

Unless Using A Specified Manufacturer, The Following Required Item(s) for Approval Prior to Fabrication: Finish Sample

Instructions:

- Must be of contract quality and suitable for commercial use.
- Installer to follow all manufacturer's installation guidelines for surface preparation and installation.
- Contractor to verify all sizes, quantities, and trim pieces required.
- Contractor to install with a 45 degree miter on all corners.
- All interpretations of the specification MUST be submitted to Hilton Design Review (projecthub.hilton.com) for final approval prior to purchasing or implementation of any material.

No printed material contained here-in may be reproduced without written permission of Tarkett Hospitality. Due to variations in monitors, printers and light sources, we cannot guarantee that the colors in this image will be an exact match to your colors. 285 Kraft Drive Dalton, GA 30721



Monument
4" MW-XX-S4



55 Silver Grey WG

Bloom Scheme

PUBLIC AREAS, WALL BASE

Issue Date: October 2019
Area Name: Public Areas- Fitness Center
Item Number: B-06

Manufacturer: Tarkett
Address: 285 Kraft Drive
Dalton, GA 30721
Phone: 706.277.3000
Contact: Jackie Passaro
E-mail: Jackie.Passaro@tarkett.com
Web: www.tarkettna.com

Description: Millworks Profile Wall Base
Product: Monument MW-29-S4
Item Number: B-06
Color/Finish: 29 Moon Rock
Size/Dimension: 4"H x .250"D
Material: Proprietary thermoplastic rubber formulation
by manufacturer

Notes:

Unless Using A Specified Manufacturer, The Following Required Item(s) for Approval Prior to Fabrication: Finish Sample

Instructions:

- Must be of contract quality and suitable for commercial use.
- Installer to follow all manufacturer's installation guidelines for surface preparation and installation.
- Contractor to verify all sizes, quantities, and trim pieces required.
- Contractor to install with a 45 degree miter on all corners.
- All interpretations of the specification MUST be submitted to Hilton Design Review (projecthub.hilton.com) for final approval prior to purchasing or implementation of any material.

No printed material contained here-in may be reproduced without written permission of Tarkett Hospitality. Due to variations in monitors, printers and light sources, we cannot guarantee that the colors in this image will be an exact match to your colors. 285 Kraft Drive Dalton, GA 30721



U.S. Patent No. D493,895

Monument
4" MW-XX-S4



29 Moon Rock WG