

RAMADA

BROADLOOM / GUEST ROOM and CORRIDOR

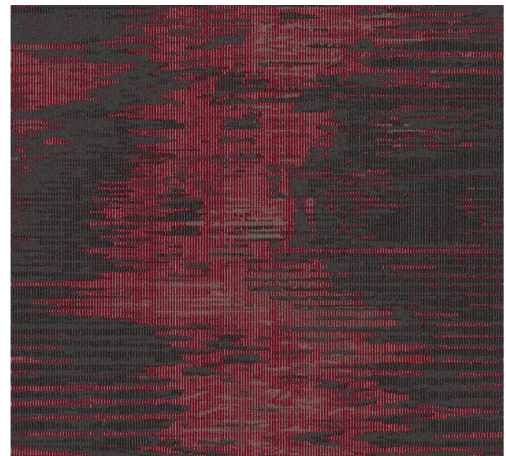
MANUFACTURER DIRECT APPROVED

Manufacturer: Tarkett Hospitality
Address: 285 Kraft Drive
Dalton, GA 30721
Phone: 703.919.4751
Contact: Jackie Passaro
Jackie.Passaro@tarkett.com
OR
WyndhamOrders@tarkett.com
Web: www.tarketthospitality.com

Description: Guest Room
Style Number: RA101
Color: 120
Width: 12'
Repeat: 24" x 38.2"
Type: Dynamics - Multi Level Loop Servo Scroll Tip Shear
Content: Lextron Enviro-Green Solution Dyed Nylon
Weight: 32 oz. tufted face weight
Primary Backing: Woven Polypropylene
Secondary Backing: Action Bac
Pile Height: .250" High, .187" Med, .062" Low
Gauge: 1/10"
Dye Method: Solution Dyed
Installation Method: Broadloom
Flame Requirements: Meets or exceeds requirement Class 1



Description: Corridor
Style Number: RA312
Color: 340
Width: 12' (15' available upon request - Ref RA315 c.343)
Repeat: 24" x 38.2"
Type: Dynamics - Multi Level Loop Servo Scroll Tip Shear
Content: Lextron Enviro-Green Solution Dyed Nylon
Weight: 36 oz. tufted face weight
Primary Backing: Woven Polypropylene
Secondary Backing: Action Bac
Pile Height: .250" High, .187" Med, .062" Low
Gauge: 1/10"
Dye Method: Solution Dyed
Installation Method: Broadloom
Flame Requirements: Meets or exceeds requirement Class 1



Additional Information:

- Due to the manufacturing process of a tip shear product, the finished yarn weight will vary more than normal manufacturing tolerances and side match cannot be guaranteed.
 - Carpet should be installed in accordance with the Carpet and Rug Institute's standard CRI-104. Carpet must be over manufacturer's recommended pad.
 - Pattern streaks and banding are visually apparent streaking in patterned carpet resulting from linear juxtaposition of pattern elements visible in both length and width direction. IT IS NOT A CARPET DEFECT, but is inherent in solution dyed graphic and cut/loop patterns.
 - All Specifications subject to normal manufacturing tolerance.
- Enviro-Green yarn has 10% pre-consumer recycled content. 