

CANDLEWOOD SUITES



 **Tarkett** Hospitality

Manufacturer: Tarkett Hospitality
Address: 285 Kraft Drive
Dalton, GA 30721

Phone: 800.871.3211
Contact: IHG.Orders@tarkett.com
Web: www.tarketthospitality.com

**Candlewood Suites:
Guest Room Areas**

Resilient Wall Base

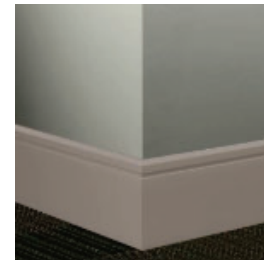
IHG SPEC NO: CG-B1 - Guest Room Area, Kitchen (Rust Scheme)

Style Number **MW-20-F**
 Color 20 Charcoal
 Product Type Millwork Reveal Wall Base
 Size 4.25" H x 1/4" Thick x 8' L
 Carton Size 64 LF per Carton



IHG SPEC NO: CG-B1 - Guest Room Area, Kitchen (Slate Scheme)

Style Number **MW-TA8-F**
 Color TA8 Welsh Castle
 Product Type Millwork Reveal Wall Base
 Size 4.25" H x 1/4" Thick x 8' L
 Carton Size 64 LF per Carton



IHG SPEC NO: CG-TS1 - Guest Room Transition LVT to Carpet (Rust/Slate Scheme)

Style Number **CD-20-A**
 Color Product 20 Charcoal
 Type Resilient Track Base
 Size/Carton Size 1-1/2"W x 12 ft.L x 20 Lengths/carton)
 Track Base MT-00-B





Candlewood Suites

IHG SPEC NO: CG-CP1

Guest Room Areas: Slate and Rust Schemes

HARTEX® 32 SPECIFICATIONS

Tarkett Style: LPH32

SPECIFICATION DATA

Product Name	Hartex® 32
Material Weight	32 oz./sq. yd.
Density	8.0 lbs./cu. ft.
Thickness	0.335"
Product Dimensions	6' x 60' (40 SY)
Color	Gray
Tensile Strength	161.4 lbs
Traffic Class	Heavy
FHA Class	2
Material Content	100% Pre-Consumer Synthetic Fiber – Needle-punched and Thermal Bonded
Indoor Air Quality	CRI Green Label Plus-certified



FLAME CERTIFICATION

Pill Test	Pass	DOC-FF 1-70
Radiant Panel	Class I	ASTM E648
Smoke Test	<450	ASTM E662

THERMAL INSULATION

R-Value	2.12
---------	------

PRODUCT OVERVIEW

Hartex 32 is made from 100% pre-consumer synthetic fiber and will not support the growth of mold or mildew, and offers a quick and easy installation process. Hartex 32 has excellent thermal insulation and acoustical properties. Hartex 32 provides comfort underfoot and is less fatiguing than direct-glue-down installations. Contributes to LEED® credits. LEED points must be considered along with other building components and must be determined by the specifier/ architect or LEED accredited representative.

Hartex 32 is designed for use in commercial and hospitality applications, including, but not limited to: guest rooms, meeting rooms, offices, dorm rooms, and retail space. Hartex 32 should be installed using conventional stretch-in installation only.



P.O. Box 727 | 34 Industrial Court E | Villa Rica, GA 30180 | 800.241.1148 | P 770.459.3653 | F 770.459.3655 | LPHospitality.com

**Candlewood Suites:
AREA: Broadloom Carpet @ Guest Room**

Product Information - IHG SPEC NO: CG-CPT RUST SCHEME

Style Number/Color	B0680 c. 815
Product Type	Dynamics Broadloom
Construction	Multi-Level Pattern Cut/Loop
Fiber	CF Lextron Enviro-Green Nylon
Dye Method	100 % Solution Dyed
Primary Backing	Woven Polypropylene
Secondary Backing	Actionbac

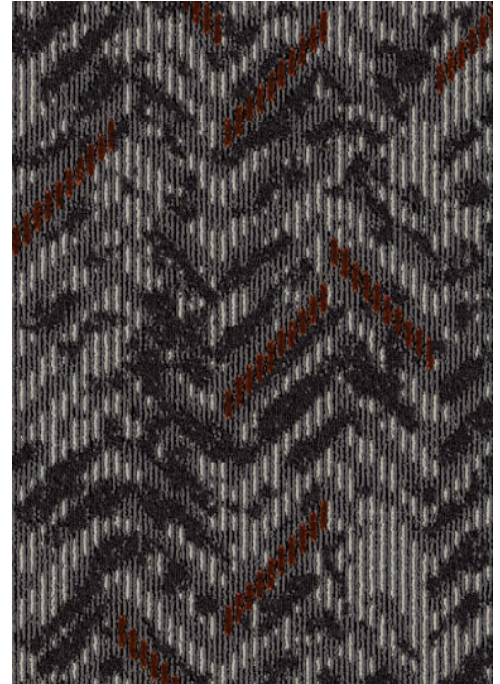
Specifications

Size	12 ft. Width
Gauge	1/10
Stitches per Inch	8
Tufted Weight	28 oz per sq/yd
Total Weight Finished	64 oz
Pile Thickness	.250 in.
Total Thickness	.375 in.
Pattern Repeat	Approx. 48 in. W x 40.91 in. L

Performance

Traffic Class (TARR)	Moderate
Pill Test	Pass
Radiant Panel	Class I
Flammability	ASTM E 648 Class I
Smoke Density	ASTM E 662 Less than 450
LEED Info	Green Label Plus Certified - GLP2380

Warranty **10 Year Limited Warranty**



Enviro-Green yarn has 10% pre-consumer recycled content.
Recommended for heavy (public space) carpet traffic levels.

Carpet should be installed in accordance with the Carpet and Rug Institute's standard CRI-104/CRI-105.
Pattern streaks and banding are visually apparent streaking in patterned carpet resulting from linear juxtaposition of pattern elements visible in both length and width direction.
IT IS NOT A CARPET DEFECT, but is inherent in solution dyed graphic and cut/loop patterns.

All Specifications subject to normal manufacturing tolerance.

Candlewood Suites

AREA: Broadloom Carpet @ Guest Room

Product Information - IHG SPEC NO: CG-CPT 1 SLATE SCHEME

Style Number/Color	B0672 c. 172
Product Type	Intrepid Broadloom
Construction	Multi-Level Pattern Cut/Loop
Fiber	CF Lextron Enviro-Green Nylon
Dye Method	100 % Solution Dyed
Primary Backing	Woven Polypropylene
Secondary Backing	Actionbac

Specifications

Size	12 ft. Width
Gauge	1/10
Stitches per Inch	7
Tufted Weight	28 oz per sq/yd
Total Weight Finished	64 oz
Pile Thickness	.250 in.
Total Thickness	.375 in.
Pattern Repeat	Approx. 48 in. W x 71.304 in. L

Performance

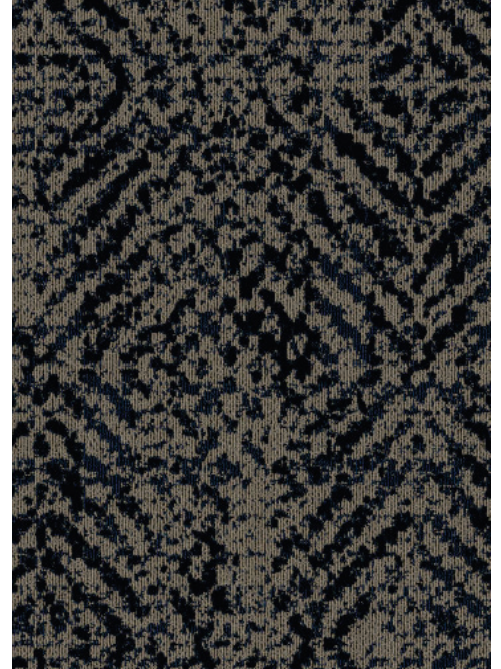
Traffic Class (TARR)	Moderate
Pill Test	Pass
Radiant Panel	Class I
Flammability	ASTM E 648 Class I
Smoke Density	ASTM E 662 Less than 450
LEED Info	Green Label Plus Certified - GLP2380

Warranty **10 Year Limited Warranty**

Enviro-Green yarn has 10% pre-consumer recycled content.
Recommended for heavy (public space) carpet traffic levels.

Carpet should be installed in accordance with the Carpet and Rug Institute's standard CRI-104/CRI-105.
Pattern streaks and banding are visually apparent streaking in patterned carpet resulting from linear juxtaposition of pattern elements visible in both length and width direction.
IT IS NOT A CARPET DEFECT, but is inherent in solution dyed graphic and cut/loop patterns.

All Specifications subject to normal manufacturing tolerance.



Candlewood Suites Hotels

IHG SPEC NO: CG-VF1

AREA: LVT @ Guest Room Areas: Entry, Kitchen



Accore™

Product Specification

1. PROPRIETARY PRODUCT/MANUFACTURER

1.1. **Proprietary Product:** Accore Luxury Vinyl flooring is a rigid core construction engineered from the inside, out—and designed to outperform the extreme demands of today's hospitality environments. Suitable for light commercial hospitality environments such as guest rooms.

1.2. Manufacturer:

Tarkett Hospitality Phone: (800)-871-3211
285 Kraft Dr..
Dalton, GA 30721
Web: www.tarketthospitality.com

1.3. Proprietary Product Description:

1.3.1. **Construction:** Tarkett Accore is an Ortho-Phthalate-Free, 100% virgin material Rigid Core luxury vinyl constructed with a plastic core and an IXPE acoustical backing.

1.3.2. Characteristics:

- **Edge treatment:** Micro-Bevel
- **Overall thickness:** 0.197" (5 mm)
- **Wearlayer Thickness:** .020" (0.51 mm)
- **Core Thickness:** 0.157" (4 mm)
- **Accoustical Backing:** 0.039" (1 mm) IXPE
- **Installation System:** Click-Drop-Lock (I4F)

1.3.3. Tile/Plank size and Packaging:

7" x 48" (17.78 cm x 121.92 cm)
10 tiles per box, 23.64 ft² (2.19 m²), 38 lbs. (17.24 kg), 55 boxes per pallet

2. PRODUCT PERFORMANCE AND TECHNICAL DATA

- 2.1. **Rigid Core Polymeric Floor Tile** (ASTM F3261): Class I, Type A or B, Grade 1, Backing Class B
- 2.2. **Dimensional Stability** (ASTM F2199): Passes
- 2.3. **Indentation Recovery** (ASTM F1914): Passes
- 2.4. **Heat Stability** (ASTM F1514): $\Delta E \leq 8$
- 2.5. **Light Stability** (ASTM F1515): $\Delta E \leq 8$
- 2.6. **Impact Sound Reduction** (ASTM E2179): $\Delta IIC \geq 20$ dB
- 2.7. **IIC Impact Sound Reduction Rating** (ASTM E492): 68 (tested with 6" concrete slab with drop ceiling)
- 2.8. **Chemical Resistance** (ASTM F925): Passes
- 2.9. **VOC Requirements** (ASTM D5116): < 0.1 mg/m³

3. INSTALLATION

See Accore installation instructions for complete details.

Floating installations do not require any adhesives.

For Glue Down installations, see below:

3.1. Adhesives:

- **Tarkett C-GU High Moisture Adhesive**

Porous & Non-Porous Substrates: 125-150 sq. ft. per gallon

4. AVAILABILITY AND COST

Available direct through Tarkett retailers nationwide.

5. MAINTENANCE

72 hours after installation is completed, initial maintenance procedures must be implemented in accordance with manufacturer's requirements. Refer to Even Plane Maintenance Instructions for complete maintenance details.

6. TECHNICAL SERVICES

Visit us on the web at www.tarketthospitality.com

Contact Technical support at (800) -871-3211

7. WARRANTY

Limited 15-year Light Commercial warranty. For complete details, contact Tarkett or an authorized Tarkett retailer.



Tarkett Hospitality

285 Kraft Dr.
Dalton, GA 30721
800.871.3211

www.tarketthospitality.com

Accore™

Product Specification

1. PROPRIETARY PRODUCT/MANUFACTURER

- 1.1. **Proprietary Product:** Accore Luxury Vinyl flooring is a rigid core construction engineered from the inside, out—and designed to outperform the extreme demands of today's hospitality environments. Suitable for light commercial hospitality environments such as guest rooms.
- 1.2. **Manufacturer:**
Tarkett Hospitality Phone: (800)-871-3211
285 Kraft Dr..
Dalton, GA 30721
Web: www.tarketthospitality.com
- 1.3. **Proprietary Product Description:**
- 1.3.1. **Construction:** Tarkett Accore is an Ortho-Phthalate-Free, 100% virgin material Rigid Core luxury vinyl constructed with a plastic core and an IXPE acoustical backing.
- 1.3.2. **Characteristics:**
- **Edge treatment:** Micro-Bevel
 - **Overall thickness:** 0.197" (5 mm)
 - **Wearlayer Thickness:** .020" (0.51 mm)
 - **Core Thickness:** 0.157" (4 mm)
 - **Accoustical Backing:** 0.039" (1 mm) IXPE
 - **Installation System:** Click-Drop-Lock (I4F)
- 1.3.3. **Tile/Plank size and Packaging:**
7" x 48" (17.78 cm x 121.92 cm)
10 tiles per box, 23.64 ft² (2.19 m²), 38 lbs. (17.24 kg), 55 boxes per pallet

3. INSTALLATION

See Accore installation instructions for complete details.
Floating installations do not require any adhesives.
For Glue Down installations, see below:

3.1. Adhesives:

- **Tarkett C-GU High Moisture Adhesive**
Porous & Non-Porous Substrates: 125-150 sq. ft. per gallon

4. AVAILABILITY AND COST

Available direct through Tarkett retailers nationwide.

5. MAINTENANCE

72 hours after installation is completed, initial maintenance procedures must be implemented in accordance with manufacturer's requirements. Refer to Even Plane Maintenance Instructions for complete maintenance details.

6. TECHNICAL SERVICES

Visit us on the web at www.tarketthospitality.com
Contact Technical support at (800) -871-3211

7. WARRANTY

Limited 15-year Light Commercial warranty. For complete details, contact Tarkett or an authorized Tarkett retailer.

2. PRODUCT PERFORMANCE AND TECHNICAL DATA

- 2.1. **Rigid Core Polymeric Floor Tile (ASTM F3261):** Class I, Type A or B, Grade 1, Backing Class B
- 2.2. **Dimensional Stability (ASTM F2199):** Passes
- 2.3. **Indentation Recovery (ASTM F1914):** Passes
- 2.4. **Heat Stability (ASTM F1514):** $\Delta E \leq 8$
- 2.5. **Light Stability (ASTM F1515):** $\Delta E \leq 8$
- 2.6. **Impact Sound Reduction (ASTM E2179):** $\Delta IIC \geq 20$ dB
- 2.7. **IIC Impact Sound Reduction Rating (ASTM E492):** 68 (tested with 6" concrete slab with drop ceiling)
- 2.8. **Chemical Resistance (ASTM F925):** Passes
- 2.9. **VOC Requirements (ASTM D5116):** < 0.1 mg/m³



**Candlewood Suites:
Public Areas**

Resilient Wall Base

IHG SPEC NO: CP-B11 -Fitness Center, Lobby

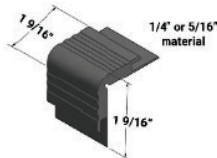
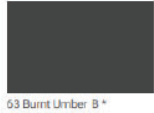
Style Number **MW-29-F**
 Color 29 Moon Rock
 Product Type Millwork Resilient Wall Base
 Size 4.25" H x 1/4" Thick x 8' L
 Carton Size 64 LF per Carton



Resilient Stair Nosings

IHG SPEC NO: CP-B13 - Stairwells

Style Number **VCD-63**
 Color 63 Burnt Umber (Use on Main Stair)
 Product Type Vinyl Stair Nose
 Size 12' L
 Carton Size 5 pieces per Carton



Style Number **VCD-VL2**
 Color VL2 Whispering Mist (Use on Top/Bottom Stair)
 Product Type Vinyl Stair Nose
 Size 12' L
 Carton Size 5 pieces per Carton



VCD-XX
 1/4" or 5/16" material
 on step and riser

Candlewood Suites: Public Areas Carpet

AREA: Broadloom Carpet @ Corridor

Product Information - IHG SPEC NO: CP-CPT12

Style Number/Color	B0674 c. 915
Product Type	Intrepid Broadloom
Construction	Multi-Level Pattern Cut/Loop
Fiber	CF Lextron Enviro-Green Nylon
Dye Method	100 % Solution Dyed
Primary Backing	Woven Polypropylene
Secondary Backing	LX24 Cushion

Specifications

Size	12 ft. Width
Gauge	1/10
Stitches per Inch	7
Tufted Weight	30 oz per sq/yd
Total Weight Finished	66 oz sq/yd
Pile Thickness Total	.250 in.
Pattern Repeat	Approx. 72 in. W x 132.57 in. L

Performance

Traffic Class (TARR)	Moderate
Pill Test	Pass
Radiant Panel	Class I
Flammability	ASTM E 648 Class I
Smoke Density	ASTM E 662 Less than 450
LEED Info	Green Label Plus Certified - GLP2380

Warranty

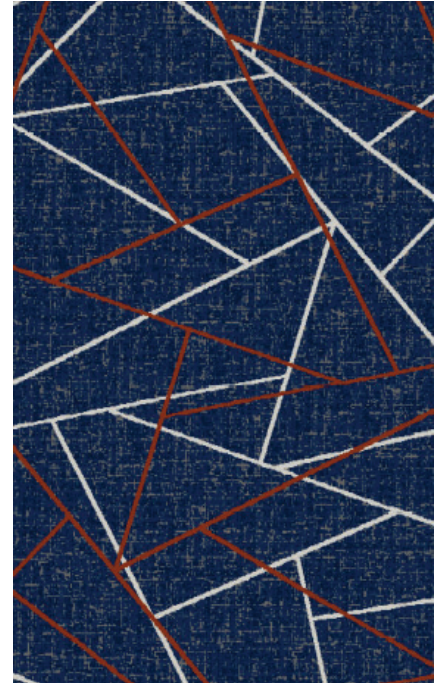
10 Year Limited Warranty

Enviro-Green yarn has 10% pre-consumer recycled content.
Recommended for heavy (public space) carpet traffic levels.

Carpet should be installed in accordance with the Carpet and Rug Institute's standard CRI-104/CRI-105.
Pattern streaks and banding are visually apparent streaking in patterned carpet resulting from linear juxtaposition of pattern elements visible in both length and width direction.
IT IS NOT A CARPET DEFECT, but is inherent in solution dyed graphic and cut/loop patterns.

Pattern streaks and banding are visually apparent streaking in patterned carpet resulting from linear juxtaposition of pattern elements visible in both length and width direction.
IT IS NOT A CARPET DEFECT, but is inherent in solution dyed graphic and cut/loop patterns.

All Specifications subject to normal manufacturing tolerance.



Candlewood Suites: Public Areas Carpet

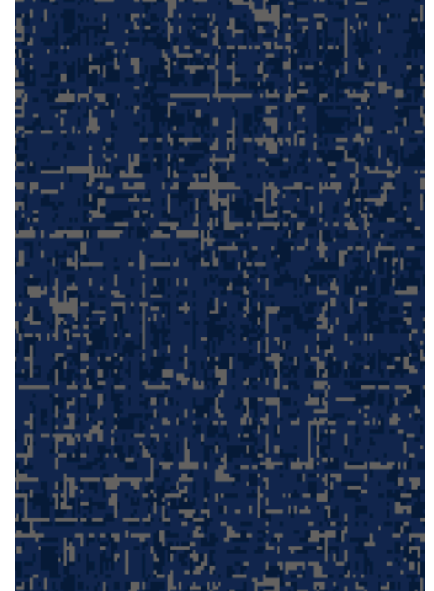
AREA: Door Fill @ Corridor

Product Information - IHG SPEC NO: CP-CPT15

Style Number/Color	B0676 c. 915
Product Type	Intrepid Broadloom
Construction	Multi-Level Pattern Cut/Loop
Fiber	CF Lextron Enviro-Green Nylon
Dye Method	100 % Solution Dyed
Primary Backing	Woven Polypropylene
Secondary Backing	LX24 Cushion

Specifications

Size	12 ft. Width
Gauge	1/10
Stitches per Inch	7
Tufted Weight	30 oz per sq/yd
Total Weight Finished	106 oz sq/yd
Pile Thickness	.250 in.
Pattern Repeat	Approx. 72 in. W x 132.57 in. L



Performance

Traffic Class (TARR)	Moderate
Pill Test	Pass
Radiant Panel	Class I
Flammability	ASTM E 648 Class I
Smoke Density	ASTM E 662 Less than 450
LEED Info	Green Label Plus Certified - GLP2380

Warranty

10 Year Limited Warranty

Enviro-Green yarn has 10% pre-consumer recycled content.
Recommended for heavy (public space) carpet traffic levels.

Carpet should be installed in accordance with the Carpet and Rug Institute's standard CRI-104/CRI-105.
Pattern streaks and banding are visually apparent streaking in patterned carpet resulting from linear juxtaposition of pattern elements visible in both length and width direction.
IT IS NOT A CARPET DEFECT, but is inherent in solution dyed graphic and cut/loop patterns.

Pattern streaks and banding are visually apparent streaking in patterned carpet resulting from linear juxtaposition of pattern elements visible in both length and width direction.
IT IS NOT A CARPET DEFECT, but is inherent in solution dyed graphic and cut/loop patterns.

All Specifications subject to normal manufacturing tolerance.

Candlewood Suites: Public Areas Carpet

AREA: Rug @ Lobby

Product Information - IHG SPEC NO: CP-CPT11

Style Number/Color	B0684 c. 194
Product Type	Dynamics Broadloom
Construction	Multi-Level Pattern Cut/Loop
Fiber	CF Lextron Enviro-Green Nylon
Dye Method	100 % Solution Dyed
Primary Backing	Woven Polypropylene
Secondary Backing	Actionbac

Specifications

Size	15 ft. Width
Gauge	1/10
Stitches per Inch	7
Tufted Weight	28 oz per sq/yd
Total Weight Finished	66 oz
Pile Thickness	.250 in.
Pattern Repeat	Approx. 150 in. W x 98.813 in. L
Finished Rug Size	12 ft 6 in W x 7ft 6in L

Performance

Traffic Class (TARR)	Moderate
Pill Test	Pass
Radiant Panel	Class I
Flammability	ASTM E 648 Class I
Smoke Density	ASTM E 662 Less than 450
LEED Info	Green Label Plus Certified - GLP2380

Warranty

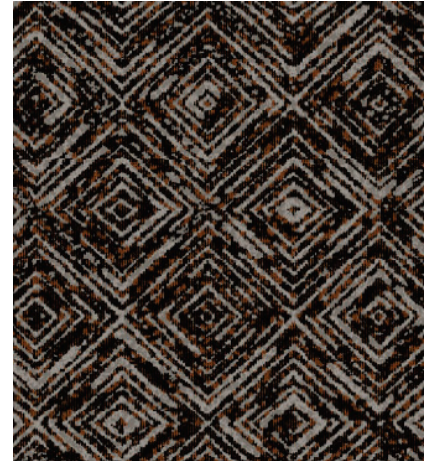
10 Year Limited Warranty

Enviro-Green yarn has 10% pre-consumer recycled content.
Recommended for heavy (public space) carpet traffic levels.

Carpet should be installed in accordance with the Carpet and Rug Institute's standard CRI-104/CRI-105.
Pattern streaks and banding are visually apparent streaking in patterned carpet resulting from linear juxtaposition of pattern elements visible in both length and width direction.
IT IS NOT A CARPET DEFECT, but is inherent in solution dyed graphic and cut/loop patterns.

Pattern streaks and banding are visually apparent streaking in patterned carpet resulting from linear juxtaposition of pattern elements visible in both length and width direction.
IT IS NOT A CARPET DEFECT, but is inherent in solution dyed graphic and cut/loop patterns.

All Specifications subject to normal manufacturing tolerance.



Rug to be bound with binding
Edge to be bound in Color: 575

Candlewood Suites: Public Areas Carpet

AREA: Rug @ Lobby

Product Information - IHG SPEC NO: CP-CPT11

Style Number/Color	B0684 c. 194
Product Type	Dynamics Broadloom
Construction	Multi-Level Pattern Cut/Loop
Fiber	CF Lextron Enviro-Green Nylon
Dye Method	100 % Solution Dyed
Primary Backing	Woven Polypropylene
Secondary Backing	Actionbac

Specifications

Size	15 ft. Width
Gauge	1/10
Stitches per Inch	7
Tufted Weight	28 oz per sq/yd
Total Weight Finished	66 oz
Pile Thickness	.250 in.
Pattern Repeat	Approx. 150 in. W x 98.813 in. L
Finished Rug Size	15 ft 0 in W x 9 ft 0 in L

Performance

Traffic Class (TARR)	Moderate
Pill Test	Pass
Radiant Panel	Class I
Flammability	ASTM E 648 Class I
Smoke Density	ASTM E 662 Less than 450
LEED Info	Green Label Plus Certified - GLP2380

Warranty

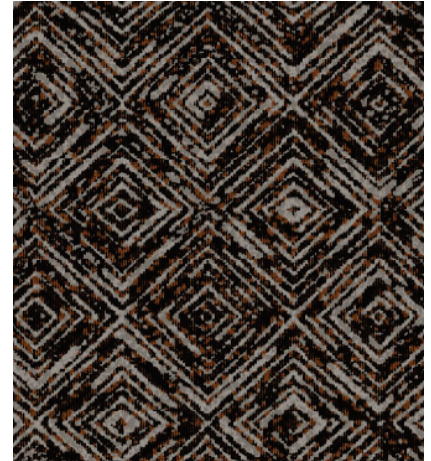
10 Year Limited Warranty

Enviro-Green yarn has 10% pre-consumer recycled content.
Recommended for heavy (public space) carpet traffic levels.

Carpet should be installed in accordance with the Carpet and Rug Institute's standard CRI-104/CRI-105.
Pattern streaks and banding are visually apparent streaking in patterned carpet resulting from linear juxtaposition of pattern elements visible in both length and width direction.
IT IS NOT A CARPET DEFECT, but is inherent in solution dyed graphic and cut/loop patterns.

Pattern streaks and banding are visually apparent streaking in patterned carpet resulting from linear juxtaposition of pattern elements visible in both length and width direction.
IT IS NOT A CARPET DEFECT, but is inherent in solution dyed graphic and cut/loop patterns.

All Specifications subject to normal manufacturing tolerance.



Rug to be bound with binding
Edge to be bound in Color: 575

Candlewood Suites: Public Areas Carpet
AREA: Rug @ Lobby
Inset - Renovation Only

Product Information - IHG SPEC NO: CP-CPT50

Style Number/Color	B0684 c. 194
Product Type	Dynamics Broadloom
Construction	Multi-Level Pattern Cut/Loop
Fiber	CF Lextron Enviro-Green Nylon
Dye Method	100 % Solution Dyed
Primary Backing	Woven Polypropylene
Secondary Backing	Actionbac

Specifications

Size	15 ft. Width
Gauge	1/10
Stitches per Inch	7
Tufted Weight	28 oz per sq/yd
Total Weight Finished	66 oz
Pile Thickness	.250 in.
Pattern Repeat	Approx. 150 in. W x 98.813 in. L



Sold in sq/yd to be cut on site

Performance

Traffic Class (TARR)	Moderate
Pill Test	Pass
Radiant Panel	Class I
Flammability	ASTM E 648 Class I
Smoke Density	ASTM E 662 Less than 450
LEED Info	Green Label Plus Certified - GLP2380

Warranty **10 Year Limited Warranty**

Enviro-Green yarn has 10% pre-consumer recycled content.
Recommended for heavy (public space) carpet traffic levels.

Carpet should be installed in accordance with the Carpet and Rug Institute's standard CRI-104/CRI-105.
Pattern streaks and banding are visually apparent streaking in patterned carpet resulting from linear juxtaposition of pattern elements visible in both length and width direction.
IT IS NOT A CARPET DEFECT, but is inherent in solution dyed graphic and cut/loop patterns.

Pattern streaks and banding are visually apparent streaking in patterned carpet resulting from linear juxtaposition of pattern elements visible in both length and width direction.
IT IS NOT A CARPET DEFECT, but is inherent in solution dyed graphic and cut/loop patterns.

All Specifications subject to normal manufacturing tolerance.



Candlewood Suites

IHG SPEC NO: CP-CP1

AREA: LOBBY

Public Areas: Lobby Area

HARTEX® 32 SPECIFICATIONS

Tarkett Style: LPH32

USE FOR: CP-CPT11

SPECIFICATION DATA

Product Name	Hartex® 32
Material Weight	32 oz./sq. yd.
Density	8.0 lbs./cu. ft.
Thickness	0.335"
Product Dimensions	6' x 60' (40 SY)
Color	Gray
Tensile Strength	161.4 lbs
Traffic Class	Heavy
FHA Class	2
Material Content	100% Pre-Consumer Synthetic Fiber – Needle-punched and Thermal Bonded
Indoor Air Quality	CRI Green Label Plus-certified



FLAME CERTIFICATION

Pill Test	Pass	DOC-FF 1-70
Radiant Panel	Class I	ASTM E648
Smoke Test	<450	ASTM E662

THERMAL INSULATION

R-Value	2.12
---------	------

PRODUCT OVERVIEW

Hartex 32 is made from 100% pre-consumer synthetic fiber and will not support the growth of mold or mildew, and offers a quick and easy installation process. Hartex 32 has excellent thermal insulation and acoustical properties. Hartex 32 provides comfort underfoot and is less fatiguing than direct-glue-down installations. Contributes to LEED® credits. LEED points must be considered along with other building components and must be determined by the specifier/ architect or LEED accredited representative.

Hartex 32 is designed for use in commercial and hospitality applications, including, but not limited to: guest rooms, meeting rooms, offices, dorm rooms, and retail space. Hartex 32 should be installed using conventional stretch-in installation only.



P.O. Box 727 | 34 Industrial Court E | Villa Rica, GA 30180 | 800.241.1148 | P 770.459.3653 | F 770.459.3655 | LPHospitality.com

**Candlewood Suites: Public Areas Carpet
Broadloom Carpet
AREA: Heart of House: Administration Areas
Public Space Areas: Stairwells**

Product Information - IHG SPEC NO: CP-CPT13

Style Number/Color	B0682 c. 120
Product Type	Dynamics Broadloom
Construction	Multi-Level Pattern Cut/Loop
Fiber	CF Lextron Enviro-Green Nylon
Dye Method	100 % Solution Dyed
Primary Backing	Woven Polypropylene
Secondary Backing	Actionbac

Specifications

Size	12 ft. Width
Gauge	1/10
Stitches per Inch	7
Tufted Weight	28 oz sq/yd
Total Weight Finished	66 oz sq/yd
Pile Thickness	.250 in.
Pattern Repeat	Approx. 24 in. W x 24 in. L



Performance

Traffic Class (TARR)	Moderate
Pill Test	Pass
Radiant Panel	Class I
Flammability	ASTM E 648 Class I
Smoke Density	ASTM E 662 Less than 450
LEED Info	Green Label Plus Certified - GLP2380

Warranty **10 Year Limited Warranty**

Enviro-Green yarn has 10% pre-consumer recycled content.
Recommended for heavy (public space) carpet traffic levels.

Carpet should be installed in accordance with the Carpet and Rug Institute's standard CRI-104/CRI-105.
Pattern streaks and banding are visually apparent streaking in patterned carpet resulting from linear juxtaposition of pattern elements visible in both length and width direction.
IT IS NOT A CARPET DEFECT, but is inherent in solution dyed graphic and cut/loop patterns.

Pattern streaks and banding are visually apparent streaking in patterned carpet resulting from linear juxtaposition of pattern elements visible in both length and width direction.
IT IS NOT A CARPET DEFECT, but is inherent in solution dyed graphic and cut/loop patterns.

All Specifications subject to normal manufacturing tolerance.

Candlewood Suites: Public Areas Carpet

AREA: Broadloom Carpet @ Meeting Room

Product Information - IHG SPEC NO: CP-CPT14

Style Number/Color	B0678 c. 112
Product Type	Dynamics Broadloom
Construction	Multi-Level Pattern Cut/Loop
Fiber	CF Lextron Enviro-Green Nylon
Dye Method	100 % Solution Dyed
Primary Backing	Woven Polypropylene
Secondary Backing	Actionbac

Specifications

Size	12 ft. Width
Gauge	1/10
Stitches per Inch	7
Tufted Weight	30 oz per sq/yd
Total Weight Finished	66 oz
Pile Thickness	.250 in.
Pattern Repeat	Approx. 72 in. W x 112.29 in. L

Performance

Traffic Class (TARR)	Moderate
Pill Test	Pass
Radiant Panel	Class I
Flammability	ASTM E 648 Class I
Smoke Density	ASTM E 662 Less than 450
LEED Info	Green Label Plus Certified - GLP2380

Warranty

10 Year Limited Warranty

Enviro-Green yarn has 10% pre-consumer recycled content.
Recommended for heavy (public space) carpet traffic levels.

Carpet should be installed in accordance with the Carpet and Rug Institute's standard CRI-104/CRI-105.
Pattern streaks and banding are visually apparent streaking in patterned carpet resulting from linear juxtaposition of pattern elements visible in both length and width direction.
IT IS NOT A CARPET DEFECT, but is inherent in solution dyed graphic and cut/loop patterns.

Pattern streaks and banding are visually apparent streaking in patterned carpet resulting from linear juxtaposition of pattern elements visible in both length and width direction.
IT IS NOT A CARPET DEFECT, but is inherent in solution dyed graphic and cut/loop patterns.

All Specifications subject to normal manufacturing tolerance.



GLUE DOWN INSTALLATION RECOMMENDED FOR USE IN THIS AREA

Accore™

Product Specification

1. PROPRIETARY PRODUCT/MANUFACTURER

- 1.1. **Proprietary Product:** Accore Luxury Vinyl flooring is a rigid core construction engineered from the inside, out—and designed to outperform the extreme demands of today's hospitality environments. Suitable for light commercial hospitality environments such as guest rooms.
- 1.2. **Manufacturer:**
Tarkett Hospitality Phone: (800)-871-3211
285 Kraft Dr..
Dalton, GA 30721
Web: www.tarketthospitality.com
- 1.3. **Proprietary Product Description:**
- 1.3.1. **Construction:** Tarkett Accore is an Ortho-Phthalate-Free, 100% virgin material Rigid Core luxury vinyl constructed with a plastic core and an IXPE acoustical backing.
- 1.3.2. **Characteristics:**
- **Edge treatment:** Micro-Bevel
 - **Overall thickness:** 0.197" (5 mm)
 - **Wearlayer Thickness:** .020" (0.51 mm)
 - **Core Thickness:** 0.157" (4 mm)
 - **Accoustical Backing:** 0.039" (1 mm) IXPE
 - **Installation System:** Click-Drop-Lock (I4F)
- 1.3.3. **Tile/Plank size and Packaging:**
7" x 48" (17.78 cm x 121.92 cm)
10 tiles per box, 23.64 ft² (2.19 m²), 38 lbs. (17.24 kg), 55 boxes per pallet

3. INSTALLATION

See Accore installation instructions for complete details.
Floating installations do not require any adhesives.
For Glue Down installations, see below:

3.1. **Adhesives:**

- **Tarkett C-GU High Moisture Adhesive**
Porous & Non-Porous Substrates: 125-150 sq. ft. per gallon

4. AVAILABILITY AND COST

Available direct through Tarkett retailers nationwide.

5. MAINTENANCE

72 hours after installation is completed, initial maintenance procedures must be implemented in accordance with manufacturer's requirements. Refer to Even Plane Maintenance Instructions for complete maintenance details.

6. TECHNICAL SERVICES

Visit us on the web at www.tarketthospitality.com
Contact Technical support at (800) -871-3211

7. WARRANTY

Limited 15-year Light Commercial warranty. For complete details, contact Tarkett or an authorized Tarkett retailer.

2. PRODUCT PERFORMANCE AND TECHNICAL DATA

- 2.1. **Rigid Core Polymeric Floor Tile (ASTM F3261):** Class I, Type A or B, Grade 1, Backing Class B
- 2.2. **Dimensional Stability (ASTM F2199):** Passes
- 2.3. **Indentation Recovery (ASTM F1914):** Passes
- 2.4. **Heat Stability (ASTM F1514):** $\Delta E \leq 8$
- 2.5. **Light Stability (ASTM F1515):** $\Delta E \leq 8$
- 2.6. **Impact Sound Reduction (ASTM E2179):** $\Delta IIC \geq 20$ dB
- 2.7. **IIC Impact Sound Reduction Rating (ASTM E492):** 68 (tested with 6" concrete slab with drop ceiling)
- 2.8. **Chemical Resistance (ASTM F925):** Passes
- 2.9. **VOC Requirements (ASTM D5116):** < 0.1 mg/m³



GLUE DOWN INSTALLATION RECOMMENDED FOR USE IN THIS AREA

Accore™

Product Specification

1. PROPRIETARY PRODUCT/MANUFACTURER

- 1.1. **Proprietary Product:** Accore Luxury Vinyl flooring is a rigid core construction engineered from the inside, out—and designed to outperform the extreme demands of today's hospitality environments. Suitable for light commercial hospitality environments such as guest rooms.
- 1.2. **Manufacturer:**
Tarkett Hospitality Phone: (800)-871-3211
285 Kraft Dr..
Dalton, GA 30721
Web: www.tarketthospitality.com
- 1.3. **Proprietary Product Description:**
- 1.3.1. **Construction:** Tarkett Accore is an Ortho-Phthalate-Free, 100% virgin material Rigid Core luxury vinyl constructed with a plastic core and an IXPE acoustical backing.
- 1.3.2. **Characteristics:**
- **Edge treatment:** Micro-Bevel
 - **Overall thickness:** 0.197" (5 mm)
 - **Wearlayer Thickness:** .020" (0.51 mm)
 - **Core Thickness:** 0.157" (4 mm)
 - **Accoustical Backing:** 0.039" (1 mm) IXPE
 - **Installation System:** Click-Drop-Lock (I4F)
- 1.3.3. **Tile/Plank size and Packaging:**
7" x 48" (17.78 cm x 121.92 cm)
10 tiles per box, 23.64 ft² (2.19 m²), 38 lbs. (17.24 kg), 55 boxes per pallet

3. INSTALLATION

See Accore installation instructions for complete details.
Floating installations do not require any adhesives.
For Glue Down installations, see below:

3.1. **Adhesives:**

- **Tarkett C-GU High Moisture Adhesive**
Porous & Non-Porous Substrates: 125-150 sq. ft. per gallon

4. AVAILABILITY AND COST

Available direct through Tarkett retailers nationwide.

5. MAINTENANCE

72 hours after installation is completed, initial maintenance procedures must be implemented in accordance with manufacturer's requirements. Refer to Even Plane Maintenance Instructions for complete maintenance details.

6. TECHNICAL SERVICES

Visit us on the web at www.tarketthospitality.com
Contact Technical support at (800) -871-3211

7. WARRANTY

Limited 15-year Light Commercial warranty. For complete details, contact Tarkett or an authorized Tarkett retailer.

2. PRODUCT PERFORMANCE AND TECHNICAL DATA

- 2.1. **Rigid Core Polymeric Floor Tile (ASTM F3261):** Class I, Type A or B, Grade 1, Backing Class B
- 2.2. **Dimensional Stability (ASTM F2199):** Passes
- 2.3. **Indentation Recovery (ASTM F1914):** Passes
- 2.4. **Heat Stability (ASTM F1514):** $\Delta E \leq 8$
- 2.5. **Light Stability (ASTM F1515):** $\Delta E \leq 8$
- 2.6. **Impact Sound Reduction (ASTM E2179):** $\Delta IIC \geq 20dB$
- 2.7. **IIC Impact Sound Reduction Rating (ASTM E492):** 68 (tested with 6" concrete slab with drop ceiling)
- 2.8. **Chemical Resistance (ASTM F925):** Passes
- 2.9. **VOC Requirements (ASTM D5116):** $< 0.1 \text{ mg/m}^3$

