

# HILTON

## HOME2 . Dynamic Scheme



 **Tarkett** Hospitality

Manufacturer: Tarkett Hospitality  
Address: 285 Kraft Drive  
Dalton, GA 30721

Phone: 800.871.3211  
Contact: [HiltonOrders@tarkett.com](mailto:HiltonOrders@tarkett.com)  
Web: [www.tarketthospitality.com](http://www.tarketthospitality.com)

# Hilton Home2 - Dynamic Scheme

## Guestroom Main Tile

### (B) CPT-01

#### Product Information

Style Number/Color	<b>B0317 / c. 846</b>
Product Type	<b>Dynamics Tile</b>
Construction	<b>Multi-Level Pattern Loop/</b>
Fiber	<b>Cut Lextron Enviro-Green</b>
Dye Method	<b>Nylon 100 % Solution Dyed</b>
Primary Backing	<b>Woven PET</b>
Secondary Backing	<b>Flex-Aire Modular® Cushion</b>

#### Specifications

Size	<b>9 in. x 36 in. Tile</b>
Gauge	<b>1/10</b>
Stitches per Inch	<b>9</b>
Tufted Weight	<b>22 oz per sq/yd</b>
Total Weight Finished	<b>120 oz</b>
Pile Thickness	<b>.219" Approx.</b>
Total Thickness	<b>.438" Approx.</b>
Suggested Install	<b>Vertical Ashlar</b>

#### Performance

Traffic Class	<b>Heavy</b>
(TARR) Pill Test	<b>Pass</b>
Radiant Panel	<b>Class I</b>
Flammability	<b>ASTM E 648 Class I</b>
Smoke Density	<b>ASTM E 662 Less than 450</b>
LEED Info	<b>Green Label Plus Certified - GLP8320</b>

<b>Warranty</b>	<b>10 Year Limited Warranty</b>
-----------------	---------------------------------

Enviro-Green yarn has 10% pre-consumer recycled content.  
Recommended for heavy carpet traffic levels.

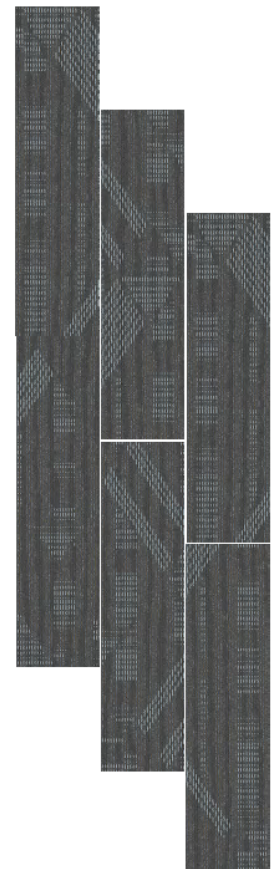
Carpet should be installed in accordance with the Carpet and Rug Institute's standard CRI-104 CRI-105. Pattern streaks and banding are visually apparent streaking in patterned carpet resulting from linear juxtaposition of pattern elements visible in both length and width direction.  
IT IS NOT A CARPET DEFECT, but is inherent in solution dyed graphic and cut/loop patterns.

#### Product Notes

- Specifications are subject to nominal manufacturing variances. Material supply and/or manufacturing processes may necessitate changes without notice.  
Colors may vary slightly from dye lot to dye lot.
- U.S. Patent numbers: 4,849,267; 6,406,574, US 9,988,760 B2
- Chair pads are recommended for optimum textural performance. Absent the use of chair pads, more intensive maintenance will be required for areas in direct contact with chair caster traffic, and some degree of appearance change is to be expected.



Install: 1/3 Vertical Ashlar



9" X 36" RANDOM CUT TILE

# Hilton Home2 - Dynamic Scheme

## Guestroom Accent Tile

### (B) CPT-02

#### Product Information

Style Number/Color	<b>B0315 / c. 846</b>
Product Type	<b>Dynamics Tile</b>
Construction	<b>Multi-Level Pattern Loop/Cut</b>
Fiber	<b>Lextron Enviro-Green Nylon</b>
Dye Method	<b>100 % Solution Dyed</b>
Primary Backing	<b>Woven PET</b>
Secondary Backing	<b>Flex-Aire Modular® Cushion</b>

#### Specifications

Size	<b>9 in. x 36 in. Tile</b>
Gauge	<b>1/10</b>
Stitches per Inch	<b>9</b>
Tufted Weight	<b>22 oz per sq/yd</b>
Total Weight Finished	<b>120 oz</b>
Pile Thickness	<b>.219" Approx.</b>
Total Thickness	<b>.438" Approx.</b>
Suggested Install	<b>Vertical Ashlar</b>

#### Performance

Traffic Class	<b>Heavy</b>
(TARR) Pill Test	<b>Pass</b>
Radiant Panel	<b>Class I</b>
Flammability	<b>ASTM E 648 Class I</b>
Smoke Density	<b>ASTM E 662 Less than 450</b>
LEED Info	<b>Green Label Plus Certified - GLP8320</b>

<b>Warranty</b>	<b>10 Year Limited Warranty</b>
-----------------	---------------------------------

Enviro-Green yarn has 10% pre-consumer recycled content.  
Recommended for heavy carpet traffic levels.

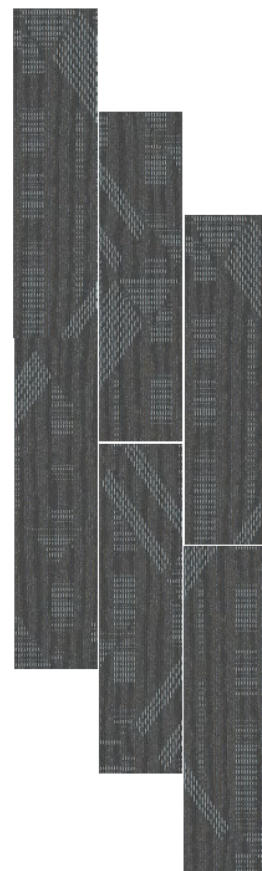
Carpet should be installed in accordance with the Carpet and Rug Institute's standard CRI-104 CRI-105. Pattern streaks and banding are visually apparent streaking in patterned carpet resulting from linear juxtaposition of pattern elements visible in both length and width direction.  
IT IS NOT A CARPET DEFECT, but is inherent in solution dyed graphic and cut/loop patterns.

#### Product Notes

- Specifications are subject to nominal manufacturing variances. Material supply and/or manufacturing processes may necessitate changes without notice.  
Colors may vary slightly from dye lot to dye lot.
- U.S. Patent numbers: 4,849,267; 6,406,574, US 9,988,760 B2
- Chair pads are recommended for optimum textural performance. Absent the use of chair pads, more intensive maintenance will be required for areas in direct contact with chair caster traffic, and some degree of appearance change is to be expected.



Install: 1/3 Vertical Ashlar



9" X 36" RANDOM CUT TILE

# Hilton Home2 - Dynamic Scheme

## Guestroom Carpet Base

### (B) CP-01.1

#### Product Information

Style Number/Color	<b>728S c. 8529</b>
Product Type	<b>Carpet Cove Base</b>
Construction	<b>CPG - Cut Pile Graphics</b>
Fiber	<b>Lextron Enviro-Green Nylon</b>
Dye Method	<b>100 % Solution Dyed</b>
Primary Backing	<b>Woven Polypropylene</b>
Secondary Backing	<b>Action Bac</b>



#### Specifications

Gauge	<b>1/10</b>
Stitches per Inch	<b>9</b>
Tufted Weight	<b>26 oz per sq/yd</b>
Total Weight Finished	<b>64 oz</b>
Pile Thickness	<b>.250 in.</b>
Width	<b>12 ft.</b>
Suggested Install	<b>Glue per Manufacturer's Recommendation</b>

#### Performance

Traffic Class	<b>Recommended for Cove Base only</b>
Radiant Panel	<b>Class I</b>
Smoke Density	<b>ASTM E 662 Less than 450</b>
Pattern Repeat	<b>025"W x 025"L</b>

<b>Warranty</b>	<b>10 Year Wear Guarantee</b>
-----------------	-------------------------------

Enviro-Green yarn has 10% pre-consumer recycled content.  
Recommended for Cove Base only

Carpet should be installed in accordance with the Carpet and Rug Institute's standard CRI-104 CRI-105. Pattern streaks and banding are visually apparent streaking in patterned carpet resulting from linear juxtaposition of pattern elements visible in both length and width direction. IT IS NOT A CARPET DEFECT, but is inherent in solution dyed graphic and cut/loop patterns.

#### Product Notes

1. Specifications are subject to nominal manufacturing variances. Material supply and/or manufacturing processes may necessitate changes without notice.  
Colors may vary slightly from dye lot to dye lot.
2. U.S. Patent numbers: 4,849,267; 6,406,574, US 9,988,760 B2
3. Chair pads are recommended for optimum textural performance. Absent the use of chair pads, more intensive maintenance will be required for areas in direct contact with chair caster traffic, and some degree of appearance change is to be expected.



# Hilton Home2 - Dynamic Scheme

## Corridor, TV Lounge, Meeting Tile

### (B) CPT-10

#### Product Information

Style Number/Color	<b>B0313 / c. 684</b>
Product Type	<b>Dynamics Tile</b>
Construction	<b>Multi-Level Pattern Loop/Cut</b>
Fiber	<b>Lextron Enviro-Green Nylon</b>
Dye Method	<b>100 % Solution Dyed</b>
Primary Backing	<b>Woven PET</b>
Secondary Backing	<b>Flex-Aire Modular® Cushion</b>

#### Specifications

Size	<b>24 in. x 24 in. Tile</b>
Gauge	<b>1/10</b>
Stitches per Inch	<b>9</b>
Tufted Weight	<b>22 oz per sq/yd</b>
Total Weight Finished	<b>120 oz</b>
Pile Thickness	<b>.219" Approx.</b>
Total Thickness	<b>.438" Approx.</b>
Suggested Install	<b>Vertical Ashlar/Quarter Turn</b>

#### Performance

Traffic Class	<b>Heavy</b>
(TARR) Pill Test	<b>Pass</b>
Radiant Panel	<b>Class I</b>
Flammability	<b>ASTM E 648 Class I</b>
Smoke Density	<b>ASTM E 662 Less than 450</b>
LEED Info	<b>Green Label Plus Certified - GLP8320</b>

<b>Warranty</b>	<b>10 Year Limited Warranty</b>
-----------------	---------------------------------

Enviro-Green yarn has 10% pre-consumer recycled content.  
Recommended for heavy carpet traffic levels.

Carpet should be installed in accordance with the Carpet and Rug Institute's standard CRI-104 CRI-105. Pattern streaks and banding are visually apparent streaking in patterned carpet resulting from linear juxtaposition of pattern elements visible in both length and width direction. IT IS NOT A CARPET DEFECT, but is inherent in solution dyed graphic and cut/loop patterns.

#### Product Notes

- Specifications are subject to nominal manufacturing variances. Material supply and/or manufacturing processes may necessitate changes without notice.  
Colors may vary slightly from dye lot to dye lot.
- U.S. Patent numbers: 4,849,267; 6,406,574, US 9,988,760 B2
- Chair pads are recommended for optimum textural performance. Absent the use of chair pads, more intensive maintenance will be required for areas in direct contact with chair caster traffic, and some degree of appearance change is to be expected.



24 in. X 24 in. Random Cut Tile



INSTALL: VERTICAL ASHLAR



INSTALL; QUARTER TURN



# Hilton Home2 - Dynamic Scheme

## Carpet Base @ Corridor, TV Lounge, and Meeting Room (B) CP-10.1

### Product Information

Style Number/Color	<b>728S c. 8529</b>
Product Type	<b>Carpet Cove Base</b>
Construction	<b>CPG - Cut Pile Graphics</b>
Fiber	<b>Lextron Enviro-Green Nylon</b>
Dye Method	<b>100 % Solution Dyed</b>
Primary Backing	<b>Woven Polypropylene</b>
Secondary Backing	<b>Action Bac</b>



### Specifications

Gauge	<b>1/10</b>
Stitches per Inch	<b>9</b>
Tufted Weight	<b>26 oz per sq/yd</b>
Total Weight Finished	<b>64 oz</b>
Pile Thickness	<b>.250 in.</b>
Width	<b>12 ft.</b>
Suggested Install	<b>Glue per Manufacturer's Recommendation</b>

### Performance

Traffic Class	<b>Recommended for Cove Base only</b>
Radiant Panel	<b>Class I</b>
Smoke Density	<b>ASTM E 662 Less than 450</b>
Pattern Repeatat	<b>025"W x 025"L</b>

<b>Warranty</b>	<b>10 Year Wear Guarantee</b>
-----------------	-------------------------------

Enviro-Green yarn has 10% pre-consumer recycled content.  
Recommended for Cove Base only

Carpet should be installed in accordance with the Carpet and Rug Institute's standard  
CRI-104/CRI-105.

Pattern streaks and banding are visually apparent streaking in patterned carpet resulting from  
linear juxtaposition of pattern elements visible in both length and width direction.

IT IS NOT A CARPET DEFECT, but is inherent in solution dyed graphic and cut/loop patterns.

#### Product Notes

1. Specifications are subject to nominal manufacturing variances. Material supply and/or manufacturing processes may necessitate changes without notice.  
Colors may vary slightly from dye lot to dye lot.
2. U.S. Patent numbers: 4,849,267; 6,406,574, US 9,988,760 B2
3. Chair pads are recommended for optimum textural performance. Absent the use of chair pads, more intensive maintenance will be required for areas in direct contact with chair caster traffic, and some degree of appearance change is to be expected.

# Hilton Home2 - Dynamic Scheme

## Lobby Tile

### (B) CPT-11

#### Product Information

Style Number/Color	<b>B0303 / c. 945</b>
Product Type	<b>Dynamics Tile</b>
Construction	<b>Multi-Level Pattern Loop/Cut</b>
Fiber	<b>Lextron Enviro-Green Nylon</b>
Dye Method	<b>100 % Solution Dyed</b>
Primary Backing	<b>Woven PET</b>
Secondary Backing	<b>Flex-Aire Modular® Cushion</b>

#### Specifications

Size	<b>24 in. x 24 in. Tile</b>
Gauge	<b>1/10</b>
Stitches per Inch	<b>9</b>
Tufted Weight	<b>22 oz per sq/yd</b>
Total Weight Finished	<b>120 oz</b>
Pile Thickness	<b>.219" Approx.</b>
Total Thickness	<b>.438" Approx.</b>
Suggested Install	<b>Vertical Ashlar/Quarter Turn</b>

#### Performance

Traffic Class	<b>Heavy</b>
(TARR) Pill Test	<b>Pass</b>
Radiant Panel	<b>Class I</b>
Flammability	<b>ASTM E 648 Class I</b>
Smoke Density	<b>ASTM E 662 Less than 450</b>
LEED Info	<b>Green Label Plus Certified - GLP8320</b>

<b>Warranty</b>	<b>10 Year Limited Warranty</b>
-----------------	---------------------------------

Enviro-Green yarn has 10% pre-consumer recycled content.  
Recommended for heavy carpet traffic levels.

Carpet should be installed in accordance with the Carpet and Rug Institute's standard  
CRI-104/CRI-105.

Pattern streaks and banding are visually apparent streaking in patterned carpet resulting from  
linear juxtaposition of pattern elements visible in both length and width direction.

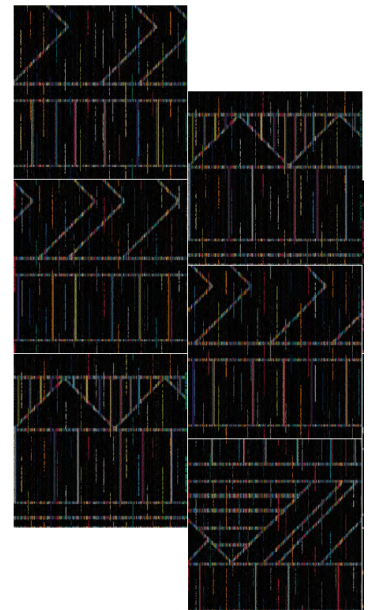
IT IS NOT A CARPET DEFECT, but is inherent in solution dyed graphic and cut/loop patterns.  
and cut/loop patterns.

#### Product Notes

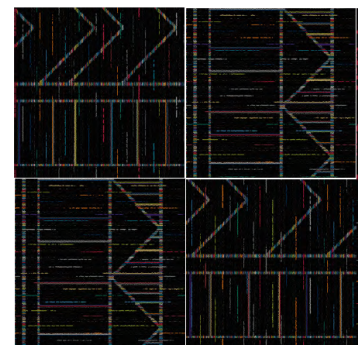
- Specifications are subject to nominal manufacturing variances. Material supply and/or manufacturing processes may necessitate changes without notice.  
Colors may vary slightly from dye lot to dye lot.
- U.S. Patent numbers: 4,849,267; 6,406,574, US 9,988,760 B2
- Chair pads are recommended for optimum textural performance. Absent the use of chair pads, more intensive maintenance will be required for areas in direct contact with chair caster traffic, and some degree of appearance change is to be expected.



INSTALL: VERTICAL ASHLAR



INSTALL; QUARTER TURN



# Hilton Home 2 Dynamic

## Stairwell Broadloom

### (B) CPT-12

#### Product Information

Style Number/Color	<b>B0302 / c. 228</b>
Product Type	<b>Dynamics Broadloom</b>
Construction	<b>Multi-Level Pattern Cut/Loop</b>
Fiber	<b>CF Lextron Enviro-Green Nylon</b>
Dye Method	<b>100 % Solution Dyed</b>
Primary Backing	<b>Woven Polypropylene</b>
Secondary Backing	<b>Actionbac</b>

#### Specifications

Size	<b>12 ft. Width</b>
Gauge	<b>1/10</b>
Stitches per Inch	<b>10</b>
Tufted Weight	<b>32 oz per sq/yd</b>
Total Weight Finished	<b>68 oz per syd</b>
Pile Thickness	<b>.343 in. Approx.</b>
Total Thickness	<b>.406 in. Approx.</b>
Pattern Repeat	<b>72 in. x 63 in.</b>

#### Performance

Traffic Class (TARR)	<b>Moderate</b>
Pill Test	<b>Pass</b>
Radiant Panel	<b>Class I</b>
Flammability	<b>ASTM E 648 Class I</b>
Smoke Density	<b>ASTM E 662 Less than 450</b>
LEED Info	<b>Green Label Plus Certified - GLP2380</b>

#### Warranty

#### 10 Year Limited Warranty

Enviro-Green yarn has 10% pre-consumer recycled content.  
Recommended for heavy (public space) carpet traffic levels.

Carpet should be installed in accordance with the Carpet and Rug Institute's standard CRI-104/CRI-105.  
Pattern streaks and banding are visually apparent streaking in patterned carpet resulting from linear juxtaposition of pattern elements visible in both length and width direction.  
IT IS NOT A CARPET DEFECT, but is inherent in solution dyed graphic and cut/loop patterns.

Pattern streaks and banding are visually apparent streaking in patterned carpet resulting from linear juxtaposition of pattern elements visible in both length and width direction.  
IT IS NOT A CARPET DEFECT, but is inherent in solution dyed graphic and cut/loop patterns.

All Specifications subject to normal manufacturing tolerance.





# Hilton Home2 - Dynamic Scheme

## BOH Office Tile

### (B) CPT-12ALT

#### Product Information

Style Number/Color	<b>B0301 / c. 228</b>
Product Type	<b>Dynamics Tile</b>
Construction	<b>Multi-Level Pattern Loop/Cut</b>
Fiber	<b>Lextron Enviro-Green Nylon</b>
Dye Method	<b>100 % Solution Dyed</b>
Primary Backing	<b>Woven PET</b>
Secondary Backing	<b>Flex-Aire Modular® Cushion</b>

#### Specifications

Size	<b>24 in. x 24 in. Tile</b>
Gauge	<b>1/10</b>
Stitches per Inch	<b>9</b>
Tufted Weight	<b>22 oz per sq/yd</b>
Total Weight Finished	<b>120 oz</b>
Pile Thickness	<b>.219" Approx.</b>
Total Thickness	<b>.438" Approx.</b>
Suggested Install	<b>Vertical Ashlar/Quarter Turn</b>

#### Performance

Traffic Class	<b>Heavy</b>
(TARR) Pill Test	<b>Pass</b>
Radiant Panel	<b>Class I</b>
Flammability	<b>ASTM E 648 Class I</b>
Smoke Density	<b>ASTM E 662 Less than 450</b>
LEED Info	<b>Green Label Plus Certified - GLP8320</b>

<b>Warranty</b>	<b>10 Year Limited Warranty</b>
-----------------	---------------------------------

Enviro-Green yarn has 10% pre-consumer recycled content.  
Recommended for heavy carpet traffic levels.

Carpet should be installed in accordance with the Carpet and Rug Institute's standard CRI-104/  
CRI-105.

Pattern streaks and banding are visually apparent streaking in patterned carpet resulting from  
linear juxtaposition of pattern elements visible in both length and width direction.

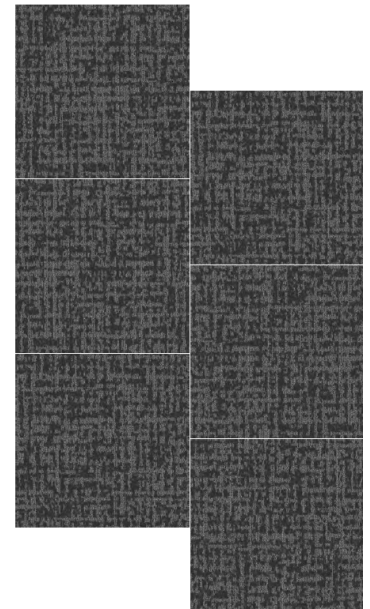
IT IS NOT A CARPET DEFECT, but is inherent in solution dyed graphic and cut/loop patterns.

#### Product Notes

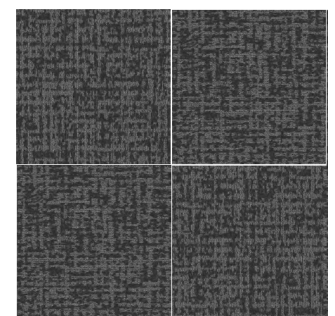
- Specifications are subject to nominal manufacturing variances. Material supply and/or manufacturing processes may necessitate changes without notice.  
Colors may vary slightly from dye lot to dye lot.
- U.S. Patent numbers: 4,849,267; 6,406,574, US 9,988,760 B2
- Chair pads are recommended for optimum textural performance. Absent the use of chair pads, more intensive maintenance will be required for areas in direct contact with chair caster traffic, and some degree of appearance change is to be expected.



INSTALL: VERTICAL ASHLAR



INSTALL; QUARTER TURN



# Hilton Home2 - Dynamic Scheme

## Carpet Base @ BOH Offices, Stairwell

### (B) CP-12.1

#### Product Information

Style Number/Color	<b>728S c. X430</b>
Product Type	<b>Carpet Cove Base</b>
Construction	<b>CPG - Cut Pile Graphics</b>
Fiber	<b>Lextron Enviro-Green Nylon</b>
Dye Method	<b>100 % Solution Dyed</b>
Primary Backing	<b>Woven Polypropylene</b>
Secondary Backing	<b>Action Bac</b>



#### Specifications

Gauge	<b>1/10</b>
Stitches per Inch	<b>9</b>
Tufted Weight	<b>26 oz per sq/yd</b>
Total Weight Finished	<b>64 oz</b>
Pile Thickness	<b>.250 in.</b>
Width	<b>12 ft.</b>
Suggested Install	<b>Glue per Manufacturer's Recommendation</b>

#### Performance

Traffic Class	<b>Recommended for Cove Base only</b>
Radiant Panel	<b>Class I</b>
Smoke Density	<b>ASTM E 662 Less than 450</b>
Pattern Repeatat	<b>025"W x 025"L</b>

<b>Warranty</b>	<b>10 Year Wear Guarantee</b>
-----------------	-------------------------------

Enviro-Green yarn has 10% pre-consumer recycled content.  
Recommended for Cove Base only

Carpet should be installed in accordance with the Carpet and Rug Institute's standard  
CRI-104/CRI-105.

Pattern streaks and banding are visually apparent streaking in patterned carpet resulting from  
linear juxtaposition of pattern elements visible in both length and width direction.

IT IS NOT A CARPET DEFECT, but is inherent in solution dyed graphic and cut/loop patterns.

#### Product Notes

1. Specifications are subject to nominal manufacturing variances. Material supply and/or manufacturing processes may necessitate changes without notice.  
Colors may vary slightly from dye lot to dye lot.
2. U.S. Patent numbers: 4,849,267; 6,406,574, US 9,988,760 B2
3. Chair pads are recommended for optimum textural performance. Absent the use of chair pads, more intensive maintenance will be required for areas in direct contact with chair caster traffic, and some degree of appearance change is to be expected.

# Hilton Home2 - Dynamic Scheme

## Resilient Products

### Product Information: Wall Base

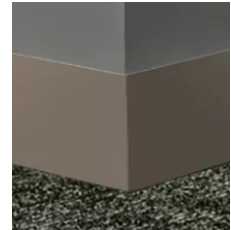
**Hilton Tag#** (B) RB-01 Base @ ERT Guestroom  
 (B) RB-10 Base @ Employee Breakroom  
 (B) RB-11 Base @ Fitness

**Style Number** MW-280-S4  
**Color** 280 Shoreline  
**Product Type** Millwork Wall Base  
**Size** 4"H x .250"Thick x 8 ft.Lengths  
**Carton Size** 64 ft per carton

Monument  
MW-XX-S4



280 Shoreline



**Hilton Tag#** (B) RB-12 Base @ Engineering & Housekeeping

**Style Number** CB-38  
**Color** 38 Pewter  
**Product Type** Traditional Vinyl Wall Base  
**Size** 4"H x 1/8"Thick x 120 ft.Coil  
**Carton Size** 120 ft per carton



38 Pewter CG



### Product Information: Vinyl Composition Tile

**Hilton Tag#** (B) VCT-10 VCT @ Engineering

**Style Number** VCT II  
**Color** 557 Shooting Star  
**Product Type** Vinyl Composition Tile  
**Size** 12" x 12" x 1/8" Thick  
**Carton Size** 45 sq ft per carton (45 tiles/carton)



### Product Information: ERT

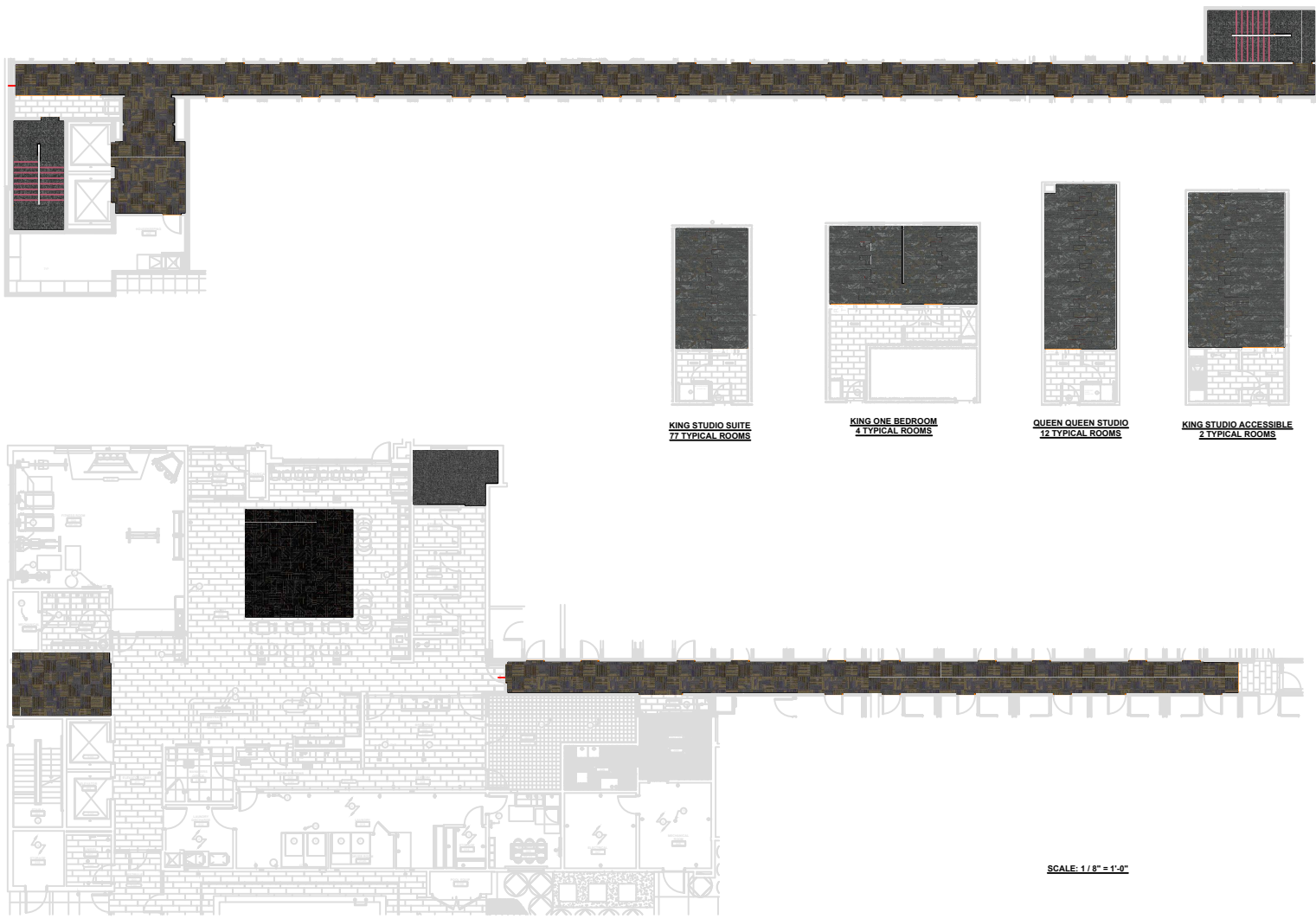
**Hilton Tag#** (B) RF-11 ERT @ Employee Breakroom & Guestroom Alt

**Style Number** Accore  
**Color** Limed Oak 0017  
**Product Type** LVT/ERT - Enhanced Resilient Tile  
**Size** 7" W x 48" L  
**Carton Size** 23.64 sq ft per carton



# Home 2 - Dynamic Scheme

## Prototypical Flooded Plan



GENERAL NOTES

1) This drawing and designs contained therein are the sole property of Tarkett Hospitality Carpet Mills, Inc.

2) The red dashed lines indicate known seams. Due to roll sizes and unexpected conditions that may arise, adjustment seams may become necessary during installation. Locations of cross seams are approximate. Actual layout may vary based on roll sizes.

3) All contractors using this drawing will be responsible for verifying all dimensions and postage requirements. Tarkett Hospitality Carpet Mills, Inc. will not be held responsible for final postage requirements.

4) These drawings are used to show the interior design intent only and should not be used for construction purposes.

-----

Seam Lines are indicated by red dashed lines.

This plan must be field verified for measurement accuracy.

Rev. #	Description	Date
R1	NO CHANGE THIS PAGE	08/29/23
R2	ONE BEDROOM SUITE LAYOUT	04/18/24
R3	ADJUST LAYOUT	05/14/24

Approved By:

Date:



TARKETT HOSPITALITY

285 KRAFT DRIVE

DALTON, GA. 30721

(800) 871-3211

Project Name and Address

HOME2

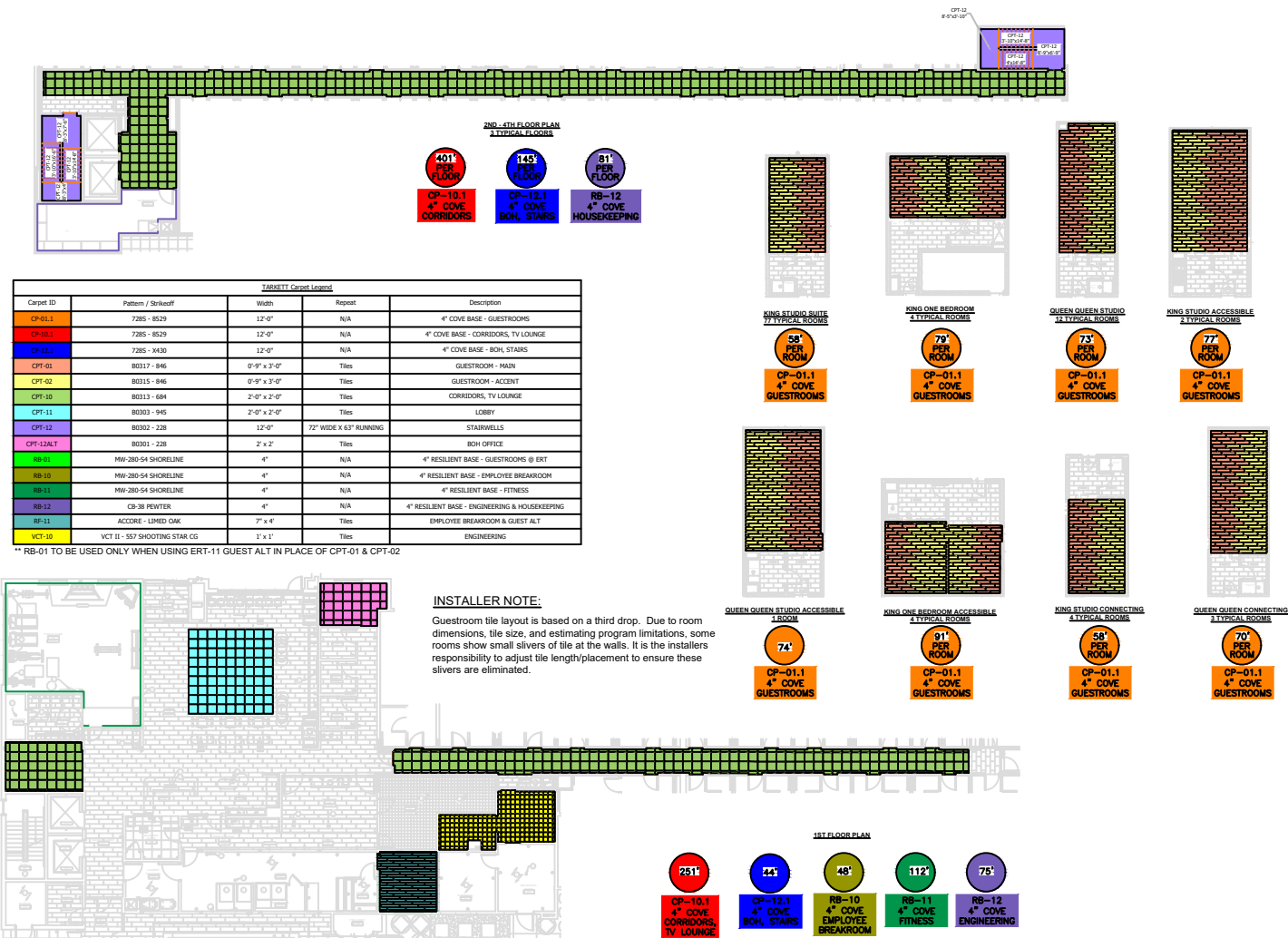
DYNAMIC SCHEME

Project	Sheet
08-K-03029	1 OF 1
Development	
Drawn by:	
Date	
Scale	1/8" = 1'-0"



## Home 2 - Dynamic Scheme

### Prototypical Seaming Diagram



### GENERAL NOTES

- 1) This drawing and designs contained herein are the sole property of Tarkett Hospitality Carpet Mills, Inc.
- 2) The red dotted lines indicate known seams. Due to roll sizes and unexpected conditions that may arise, adjustment seams may become necessary during installation. Locations of cross seams are approximate. Actual layout may vary based o roll sizes.
- 3) All contractors using this drawing will be responsible for all dimensions and yardage requirements. Tarkett Hospitality Carpet Mills, Inc. will not be held responsible for final yardage requirements.
- 4) These drawings are used to show the interior design intent only and should not be used for construction purposes.

Seam Lines are indicated by red dashed lines.

This plan must be field verified for measurement accuracy.

Rev. #	Description	Date
R1	ADD RESILIENT PRODUCTS	8/29/23
R2	ONE BEDROOM SUITE LAYOUT	04/18/24
R3	ADJUST LAYOUT	05/16/24

Approved By:

Date:



TARKETT HOSPITALITY  
285 KRAFT DRIVE  
DALTON, GA. 30721  
(800) 871-3211

---

**Project Name and Address**

## HOME2 DYNAMIC SCHEME

<b>Project</b> 08-K-03029	<b>Sheet</b>       <b>1 OF 1</b>
<b>Development</b> N/A	
<b>Drawn by:</b> SUSAN JACKSON	
<b>Date</b> 08/24/2023	
<b>Scale</b> 3 / 32" = 1' - 0"	

**SCALE: 3 / 32" = 1'-0"**