



Dynamic Scheme



©Tarkett Hospitality





# Hilton Home2 - Dynamic Scheme

## Guestroom Carpet Base

### (B) CP-01.1

#### Product Information

Style Number/Color	<b>728S / 8529</b>
Product Type	<b>Carpet Cove Base</b>
Construction	<b>CPG - Cut Pile Graphics</b>
Fiber	<b>Lextron Enviro-Green Nylon</b>
Dye Method	<b>100 % Solution Dyed</b>
Primary Backing	<b>Woven Polypropylene</b>
Secondary Backing	<b>Action Bac</b>



#### Specification

Gauge	<b>1/10</b>
Stitches per Inch	<b>9</b>
Tufted Weight	<b>26 oz per sq/yd</b>
Total Weight Finished	<b>64 oz</b>
Pile Thickness	<b>.250 in.</b>
Width	<b>12 ft.</b>
Suggested Install	<b>Glue per Manufacturer's Recommendation</b>

#### Performance

Traffic Class	<b>Recommended for Cove Base only</b>
Radiant Panel	<b>Class I</b>
Smoke Density	<b>ASTM E 662 Less than 450</b>
Pattern Repeat	<b>025"W x 025"L</b>

<b>Warranty</b>	<b>10 Year Wear Guarantee</b>
-----------------	-------------------------------

Enviro-Green yarn has 10% pre-consumer recycled content.  
Recommended for Cove Base only

Carpet should be installed in accordance with the Carpet and Rug Institute's standard CRI-104 CRI-105. Pattern streaks and banding are visually apparent streaking in patterned carpet resulting from linear juxtaposition of pattern elements visible in both length and width direction. IT IS NOT A CARPET DEFECT, but is inherent in solution dyed graphic and cut/loop patterns.

#### Product Notes

1. Specifications are subject to nominal manufacturing variances. Material supply and/or manufacturing processes may necessitate changes without notice. Colors may vary slightly from dye lot to dye lot.
2. U.S. Patent numbers: 4,849,267; 6,406,574, US 9,988,760 B2
3. Chair pads are recommended for optimum textural performance. Absent the use of chair pads, more intensive maintenance will be required for areas in direct contact with chair caster traffic, and some degree of appearance change is to be expected.



# Hilton Home2 - Dynamic Scheme

## Carpet Base @ Corridor, TV Lounge, and Meeting Room (B) CP-10.1

### Product Information

Style Number/Color	<b>728S / 8529</b>
Product Type	<b>Carpet Cove Base</b>
Construction	<b>CPG - Cut Pile Graphics</b>
Fiber	<b>Lextron Enviro-Green Nylon</b>
Dye Method	<b>100 % Solution Dyed</b>
Primary Backing	<b>Woven Polypropylene</b>
Secondary Backing	<b>Action Bac</b>



### Specification

Gauge	<b>1/10</b>
Stitches per Inch	<b>9</b>
Tufted Weight	<b>26 oz per sq/yd</b>
Total Weight Finished	<b>64 oz</b>
Pile Thickness	<b>.250 in.</b>
Width	<b>12 ft.</b>
Suggested Install	<b>Glue per Manufacturer's Recommendation</b>

### Performance

Traffic Class	<b>Recommended for Cove Base only</b>
Radiant Panel	<b>Class I</b>
Smoke Density	<b>ASTM E 662 Less than 450</b>
Pattern Repeatat	<b>025"W x 025"L</b>

<b>Warranty</b>	<b>10 Year Wear Guarantee</b>
-----------------	-------------------------------

Enviro-Green yarn has 10% pre-consumer recycled content.  
Recommended for heavy carpet traffic levels.

Carpet should be installed in accordance with the Carpet and Rug Institute's standard CRI-104 CRI-105. Pattern streaks and banding are visually apparent streaking in patterned carpet resulting from linear juxtaposition of pattern elements visible in both length and width direction. IT IS NOT A CARPET DEFECT, but is inherent in solution dyed graphic and cut/loop patterns.

### Product Notes

1. Specifications are subject to nominal manufacturing variances. Material supply and/or manufacturing processes may necessitate changes without notice.
2. Colors may vary slightly from dye lot to dye lot.
3. U.S. Patent numbers: 4,849,267; 6,406,574, US 9,988,760 B2
4. Chair pads are recommended for optimum textural performance. Absent the use of chair pads, more intensive maintenance will be required for areas in direct contact with chair caster traffic, and some degree of appearance change is to be expected.

# Hilton Home2 - Dynamic Scheme

## Lobby Tile

### (B) CPT-11

#### Product Information

Style Number/Color	<b>B0303 / 945</b>
Product Type	<b>Carpet Tile</b>
Construction	<b>Multi-Level Pattern Loop/Cut</b>
Fiber	<b>Lextron Enviro-Green Nylon</b>
Dye Method	<b>100 % Solution Dyed</b>
Primary Backing	<b>Woven PET</b>
Secondary Backing	<b>Flex-Aire Modular® Cushion</b>

#### Specification

Size	<b>24 in. x 24 in. Tile</b>
Gauge	<b>1/10</b>
Stitches per Inch	<b>9</b>
Tufted Weight	<b>22 oz per sq/yd</b>
Total Weight Finished	<b>120 oz</b>
Pile Thickness	<b>.219" Approx.</b>
Total Thickness	<b>.438" Approx.</b>
Suggested Install	<b>Vertical Ashlar/Quarter Turn</b>

#### Performance

Traffic Class	<b>Heavy</b>
(TARR) Pill Test	<b>Pass</b>
Radiant Panel	<b>Class I</b>
Flammability	<b>ASTM E 648 Class I</b>
Smoke Density	<b>ASTM E 662 Less than 450</b>
LEED Info	<b>Green Label Plus Certified - GLP8320</b>

**Warranty** **10 Year Limited Warranty**

Enviro-Green yarn has 10% pre-consumer recycled content.  
Recommended for heavy carpet traffic levels.

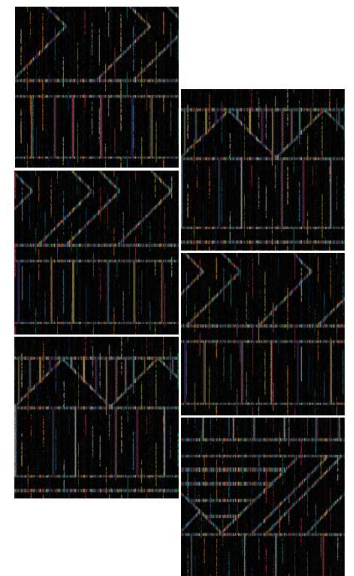
Carpet should be installed in accordance with the Carpet and Rug Institute's standard CRI-104 CRI-105. Pattern streaks and banding are visually apparent streaking in patterned carpet resulting from linear juxtaposition of pattern elements visible in both length and width direction. IT IS NOT A CARPET DEFECT, but is inherent in solution dyed graphic and cut/loop patterns.

#### Product Notes

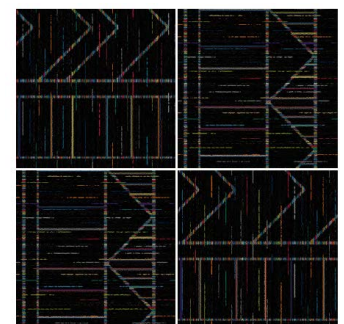
1. Specifications are subject to nominal manufacturing variances. Material supply and/or manufacturing processes may necessitate changes without notice.
2. Colors may vary slightly from dye lot to dye lot.
3. U.S. Patent numbers: 4,849,267; 6,406,574, US 9,988,760 B2
4. Chair pads are recommended for optimum textural performance. Absent the use of chair pads, more intensive maintenance will be required for areas in direct contact with chair caster traffic, and some degree of appearance change is to be expected.



24" x 24" RANDOM CUT TILE



INSTALL: VERTICAL ASHLAR



INSTALL: QUARTER TURN

**Hilton Home 2 Dynamic  
Stairwell Broadloom  
(B) CPT-12**

**Product Information**

Style Number/Color	<b>B0302 / 228</b>
Product Type	<b>Broadloom</b>
Construction	<b>Multi-Level Pattern Cut/Loop</b>
Fiber	<b>CF Lextron Enviro-Green Nylon</b>
Dye Method	<b>100 % Solution Dyed</b>
Primary Backing	<b>Woven Polypropylene</b>
Secondary Backing	<b>Actionbac</b>

**Specification**

Size	<b>12 ft. Width</b>
Gauge	<b>1/10</b>
Stitches per Inch	<b>10</b>
Tufted Weight	<b>32 oz per sq/yd</b>
Total Weight Finished	<b>68 oz per syd</b>
Pile Thickness	<b>.343 in. Approx.</b>
Total Thickness	<b>.406 in. Approx.</b>
Pattern Repeat	<b>72 in. x 63 in.</b>



**Performance**

Traffic Class (TARR)	<b>Moderate</b>
Pill Test	<b>Pass</b>
Radiant Panel	<b>Class I</b>
Flammability	<b>ASTM E 648 Class I</b>
Smoke Density	<b>ASTM E 662 Less than 450</b>
LEED Info	<b>Green Label Plus Certified - GLP2380</b>

**Warranty** **10 Year Limited Warranty**

Enviro-Green yarn has 10% pre-consumer recycled content.  
Recommended for heavy carpet traffic levels.

Carpet should be installed in accordance with the Carpet and Rug Institute's standard CRI-104 CRI-105. Pattern streaks and banding are visually apparent streaking in patterned carpet resulting from linear juxtaposition of pattern elements visible in both length and width direction. IT IS NOT A CARPET DEFECT, but is inherent in solution dyed graphic and cut/loop patterns.

Product Notes

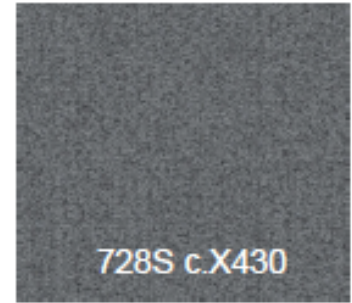
1. Specifications are subject to nominal manufacturing variances. Material supply and/or manufacturing processes may necessitate changes without notice.
2. Colors may vary slightly from dye lot to dye lot.
3. U.S. Patent numbers: 4,849,267; 6,406,574, US 9,988,760 B2
4. Chair pads are recommended for optimum textural performance. Absent the use of chair pads, more intensive maintenance will be required for areas in direct contact with chair caster traffic, and some degree of appearance change is to be expected.



**Hilton Home2 - Dynamic Scheme  
Carpet Base @ BOH Offices, Stairwell  
(B) CP-12.1**

**Product Information**

Style Number/Color	<b>728S / X430</b>
Product Type	<b>Carpet Cove Base</b>
Construction	<b>CPG - Cut Pile Graphics</b>
Fiber	<b>Lextron Enviro-Green Nylon</b>
Dye Method	<b>100 % Solution Dyed</b>
Primary Backing	<b>Woven Polypropylene</b>
Secondary Backing	<b>Action Bac</b>



**Specification**

Gauge	<b>1/10</b>
Stitches per Inch	<b>9</b>
Tufted Weight	<b>26 oz per sq/yd</b>
Total Weight Finished	<b>64 oz</b>
Pile Thickness	<b>.250 in.</b>
Width	<b>12 ft.</b>
Suggested Install	<b>Glue per Manufacturer's Recommendation</b>

**Performance**

Traffic Class	<b>Recommended for Cove Base only</b>
Radiant Panel	<b>Class I</b>
Smoke Density	<b>ASTM E 662 Less than 450</b>
Pattern Repeatat	<b>025"W x 025"L</b>

<b>Warranty</b>	<b>10 Year Wear Guarantee</b>
-----------------	-------------------------------

Enviro-Green yarn has 10% pre-consumer recycled content.  
Recommended for heavy carpet traffic levels.

Carpet should be installed in accordance with the Carpet and Rug Institute's standard CRI-104 CRI-105. Pattern streaks and banding are visually apparent streaking in patterned carpet resulting from linear juxtaposition of pattern elements visible in both length and width direction. IT IS NOT A CARPET DEFECT, but is inherent in solution dyed graphic and cut/loop patterns.

Product Notes

1. Specifications are subject to nominal manufacturing variances. Material supply and/or manufacturing processes may necessitate changes without notice.
2. Colors may vary slightly from dye lot to dye lot.
3. U.S. Patent numbers: 4,849,267; 6,406,574, US 9,988,760 B2
4. Chair pads are recommended for optimum textural performance. Absent the use of chair pads, more intensive maintenance will be required for areas in direct contact with chair caster traffic, and some degree of appearance change is to be expected.

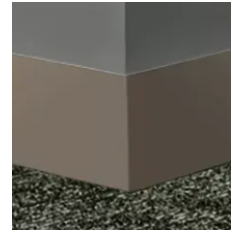
# Hilton Home2 - Dynamic Scheme

## Resilient Products

### Product Information: Wall Base

**Hilton Tag#** (B) RB-01 Base @ ERT Guestroom  
 (B) RB-10 Base @ Employee Breakroom

**Style Number** MW-280-S4  
**Color** 280 Shoreline  
**Product Type** Millwork Wall Base  
**Size** 4"H x .250"Thick x 8 ft.Lengths  
**Carton Size** 64 ft per carton



**Hilton Tag#** (B) RB-11 Base @ Fitness

**Style Number** MW-48-S4  
**Color** 48 Grey  
**Product Type** Millwork Wall Base  
**Size** 4"H x .250"Thick x 8 ft.Lengths  
**Carton Size** 64 ft per carton

**Hilton Tag#** (B) RB-12 Base @ Engineering & Housekeeping

**Style Number** CB-38  
**Color** 38 Pewter  
**Product Type** Traditional Vinyl Wall Base  
**Size** 4"H x 1/8"Thick x 120 ft.Coil  
**Carton Size** 120 ft per carton



### Product Information: Vinyl Composition Tile

**Hilton Tag#** (B) VCT-10 VCT @ Engineering

**Style Number** VCT II  
**Color** 557 Shooting Star  
**Product Type** Vinyl Composition Tile  
**Size** 12" x 12" x 1/8" Thick  
**Carton Size** 45 sq ft per carton (45 tiles/carton)



### Product Information: ERT

**Hilton Tag#** (B) RF-11 ERT @ Employee Breakroom & Guestroom Alt

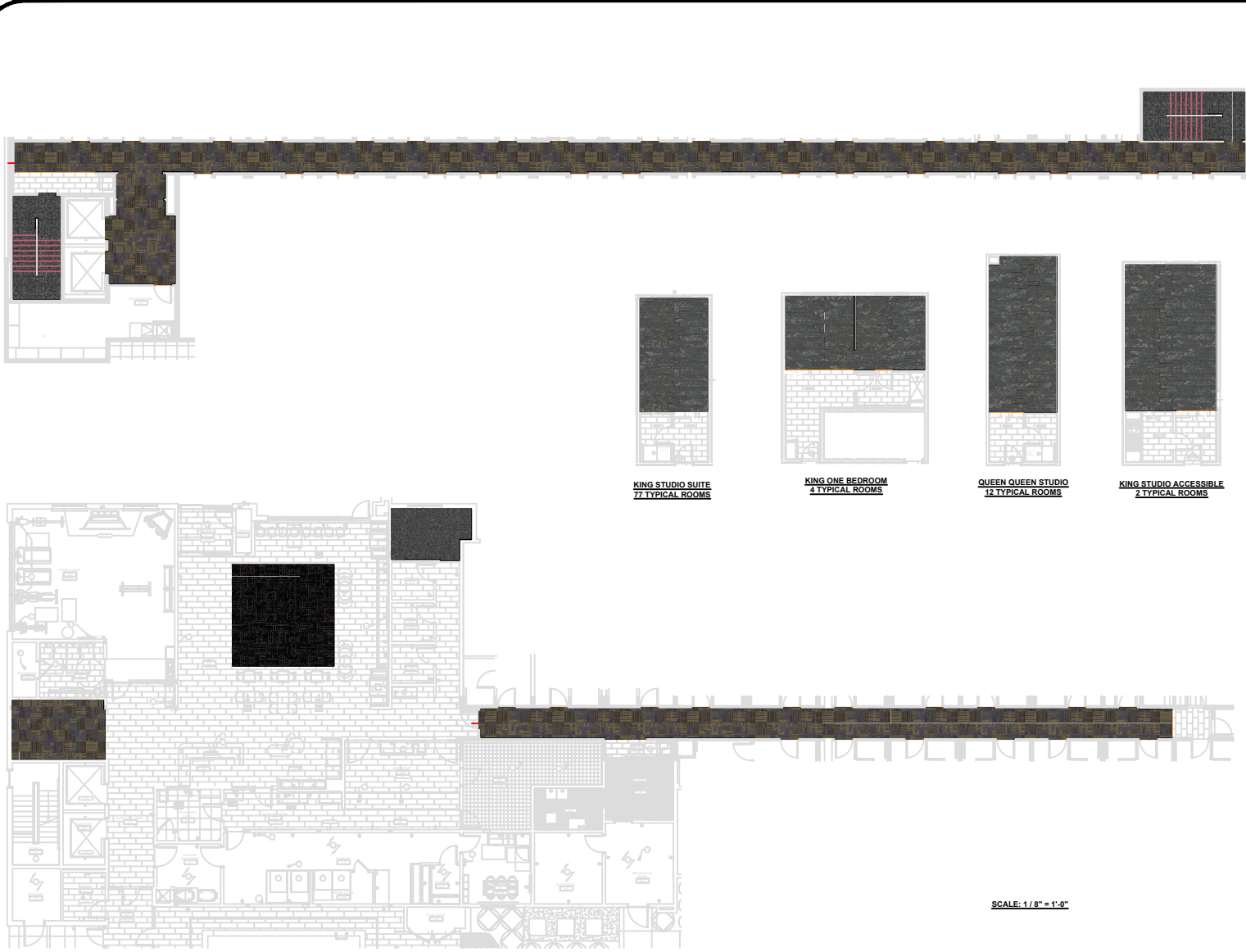
**Style Number** ACCRE-0017-7X48-VT  
**Color** Limed Oak 0017  
**Product Type** LVT/ERT - Enhanced Resilient Tile  
**Size** 7" W x 48" L  
**Carton Size** 23.64 sq ft per carton



**INSTALL: 1/3 BRICK ASHLAR**

# Home 2 - Dynamic Scheme

## Prototypical Flooded Plan



**GENERAL NOTES**

- 1) This drawing and designs contained therein are the sole property of Tarkett Hospitality Carpet Mills, Inc.
- 2) The red dashed lines indicate known seams. Due to roll sizes and unexpected conditions that may arise, adjustment seams may become necessary during installation. Locations of cross seams are approximate. Actual layout may vary based on roll sizes.
- 3) All contractors using this drawing will be responsible for verifying all dimensions and package requirements. Tarkett Hospitality Carpet Mills, Inc. will not be held responsible for final package requirements.
- 4) These drawings are used to show the interior design intent only and should not be used for construction purposes.

-----  
Seam Lines are indicated by red dashed lines.  
This plan must be field verified for measurement accuracy.

Rev. #	Description	Date
R1	NO CHANGE THIS PAGE	08/29/23
R2	ONE BEDROOM SUITE LAYOUT	04/18/24
R3	ADJUST LAYOUT	05/14/24

Approved By: \_\_\_\_\_  
Date: \_\_\_\_\_



TARKETT HOSPITALITY  
285 KRAFT DRIVE  
DALTON, GA. 30721  
(800) 871-3211

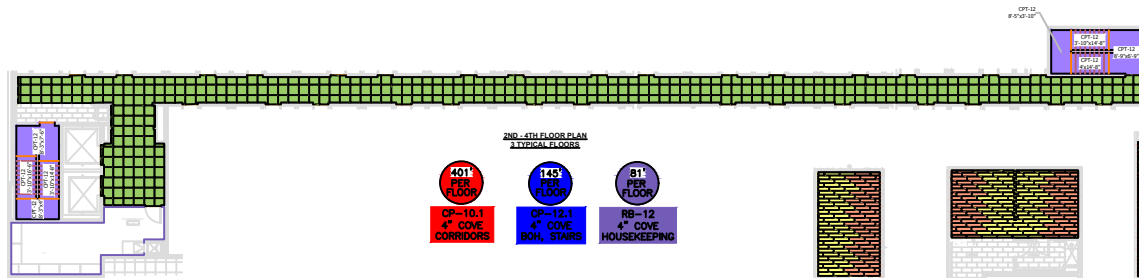
Project Name and Address  
**HOME2  
DYNAMIC SCHEME**

<b>Project</b> 08-K-03029	<b>Sheet</b>
<b>Development</b> N/A	1 OF 1
<b>Drawn by:</b> SUSAN JACKSON	
<b>Date</b> 08/24/2023	
<b>Scale</b> 1/8" = 1'-0"	

SCALE: 1/8" = 1'-0"

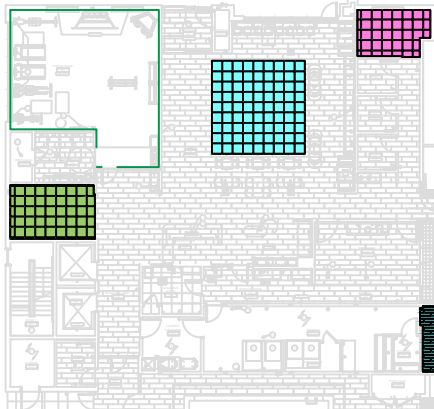
# Home 2 - Dynamic Scheme

## Prototypical Seaming Diagram

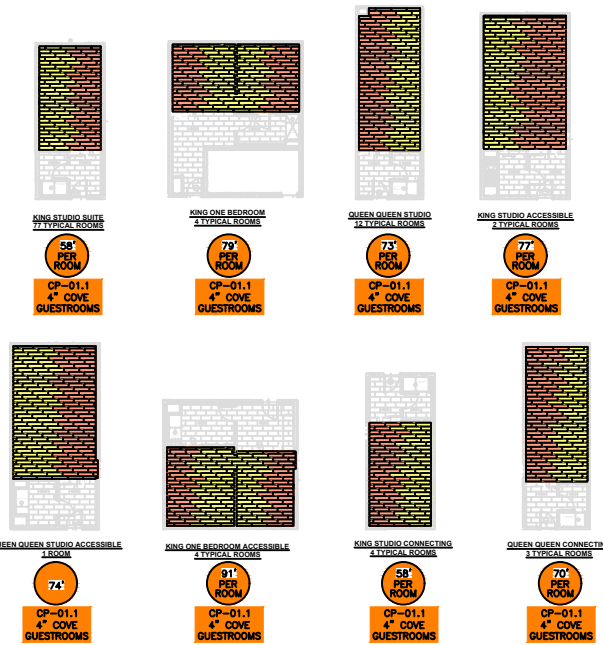


Carpet ID	Pattern / Shikord	Width	Repeat	Description
CP-01.1	7285 - 8529	12'-0"	N/A	4" COVE BASE - GUESTROOMS
CP-02.1	7285 - 8529	12'-0"	N/A	4" COVE BASE - CORRIDORS, TV LOUNGE
CP-02.2	7285 - X430	12'-0"	N/A	4" COVE BASE - BOH, STAIRS
CPT-01	B0317 - 846	0'-9" x 3'-0"	Tiles	GUESTROOM - MAIN
CPT-02	B0315 - 846	0'-9" x 3'-0"	Tiles	GUESTROOM - ACCENT
CPT-10	B0313 - 684	2'-0" x 2'-0"	Tiles	CORRIDORS, TV LOUNGE
CPT-11	B0303 - 945	2'-0" x 2'-0"	Tiles	LOBBY
CPT-12	B0302 - 228	12'-0"	72" WIDE X 63" RUNNING	STAIRWELLS
CPT-12A.1	B0301 - 228	2' x 2'	Tiles	BOH OFFICE
RB-01	MW-280-54 SHORELINE	4"	N/A	4" RESILIENT BASE - GUESTROOMS @ ERT
RB-10	MW-280-54 SHORELINE	4"	N/A	4" RESILIENT BASE - EMPLOYEE BREAKROOM
RB-11	MW-280-54 SHORELINE	4"	N/A	4" RESILIENT BASE - FITNESS
RB-12	CR-38 PEWTER	4"	N/A	4" RESILIENT BASE - ENGINEERING & HOUSEKEEPING
RF-11	ACCORE - LIME DAK	7' x 4'	Tiles	EMPLOYEE BREAKROOM & GUEST ALT
VE1-10	VCT II - 55' SHOOTING STAR CG	1' x 1'	Tiles	ENGINEERING

\*\* RB-01 TO BE USED ONLY WHEN USING ERT-11 GUEST ALT IN PLACE OF CPT-01 & CPT-02



**INSTALLER NOTE:**  
Guestroom tile layout is based on a third drop. Due to room dimensions, tile size, and estimating program limitations, some rooms show small slivers of tile at the walls. It is the installers responsibility to adjust tile length/placement to ensure these slivers are eliminated.



**GENERAL NOTES**

- This drawing and designs contained therein are the sole property of Tarkett Hospitality Carpet Mills, Inc.
- The red dotted lines indicate known seams. Due to roll sizes and unexpected conditions that may arise, adjustment seams may become necessary during installation. Locations of cross seams are approximate. Actual layout may vary based on roll sizes.
- All contractors using this drawing will be responsible for verifying all dimensions and package requirements. Tarkett Hospitality Carpet Mills, Inc. will not be held responsible for final package requirements.
- These drawings are used to show the interior design intent only and should not be used for construction purposes.

Seam Lines are indicated by red dashed lines.  
This plan must be field verified for measurement accuracy.

Rev. #	Description	Date
R1	ADD RESILIENT PRODUCTS	8/9/23
R2	ONE BEDROOM SUITE LAYOUT	04/18/24
R3	ADJUST LAYOUT	05/16/24

Approved By: \_\_\_\_\_  
Date: \_\_\_\_\_

**Tarkett**

TARKETT HOSPITALITY  
285 KRAFT DRIVE  
DALTON, GA. 30721  
(800) 871-3211

Project Name and Address  
**HOME2  
DYNAMIC SCHEME**

Project BR-K-03029 Development N/A	Sheet <b>1 OF 1</b>
Drawn by SUSAN JACKSON	
Date 08/24/2023	
Scale 3/32" = 1'-0"	

SCALE: 3/32" = 1'-0"

# Every step matters

Sustainability

*Every Step Matters. Tarkett’s holistic approach to sustainability is woven into the fabric of how we do business and sits at the heart of our day-to-day decision making. For decades, we’ve scrutinized every detail of our business for its impact on resources such as soil, water, air, and climate—because when you’re trailblazing a more sustainable future, every step matters.*

**Corporate Transparency** is fundamental to our values and the way we do business. Third-party assessments serve as a testament to our performance, earning the trust of customers and partners.



#### **EcoVadis**

Tarkett is proud to have been awarded a Platinum sustainability rating by EcoVadis with a score of 81/100, which places us in the top 1% of rated companies. EcoVadis assesses CSR policies, actions, and results across four themes and 21 CSR criteria: environment, labor and human rights, ethics, and sustainable procurement.



#### **Carbon Disclosure Project (CDP)**

Tarkett’s “A” score for climate change impact positions us at the leadership level of CDP’s grading system.



#### **Science Based Targets Initiative**

Tarkett’s 2030 carbon reduction targets are approved by the Science Based Targets initiative (SBTi). We have two 2030 targets guiding nearly every sustainability initiative at Tarkett:

1. Reduce carbon emissions by 30% across Scopes 1, 2, and 3.
2. Increase recycled content in our products from 18% in 2019 to 30% by 2030.



**Start your next project with ReStart®**

We're committed to creating a circular economy where nothing goes to waste. Take part by starting your next project with Tarkett's ReStart® flooring take-back and recycling program. The ReStart program will accept any type of flooring from any manufacturer. Join us as we innovate and collaborate towards a healthier future for this generation and generations to come.

# Contact Us

---

HiltonOrders@tarkett.com

800-871-3211

**Tarkett Hospitality**

285 Kraft Drive  
Dalton, GA 30721  
800.871.3211

[www.tarketthospitality.com](http://www.tarketthospitality.com)