



Vibrant Scheme



©Tarkett Hospitality

Hilton Home2 - Vibrant Scheme

Guestroom Carpet Base

(A) CP-01.1

Product Information

Style Number/Color	728S / 8531
Product Type	Carpet Cove Base
Construction	CPG - Cut Pile Graphics
Fiber	Lextron Enviro-Green Nylon
Dye Method	100 % Solution Dyed
Primary Backing	Woven Polypropylene
Secondary Backing	Action Bac



Specifications

Gauge	1/10
Stitches per Inch	9
Tufted Weight	26 oz per sq/yd
Total Weight Finished	64 oz
Pile Thickness	.250 in.
Width	12 ft.
Suggested Install	Glue per Manufacturer's Recommendation

Performance

Traffic Class	Recommended for Cove Base only
Radiant Panel	Class I
Smoke Density	ASTM E 662 Less than 450
Pattern Repeat	025"W x 025"L

Warranty	10 Year Wear Guarantee
-----------------	-------------------------------

Enviro-Green yarn has 10% pre-consumer recycled content.
Recommended for Cove Base only

Carpet should be installed in accordance with the Carpet and Rug Institute's standard CRI-104 CRI-105. Pattern streaks and banding are visually apparent streaking in patterned carpet resulting from linear juxtaposition of pattern elements visible in both length and width direction. IT IS NOT A CARPET DEFECT, but is inherent in solution dyed graphic and cut/loop patterns.

Product Notes

1. Specifications are subject to nominal manufacturing variances. Material supply and/or manufacturing processes may necessitate changes without notice. Colors may vary slightly from dye lot to dye lot.
2. U.S. Patent numbers: 4,849,267; 6,406,574, US 9,988,760 B2
3. Chair pads are recommended for optimum textural performance. Absent the use of chair pads, more intensive maintenance will be required for areas in direct contact with chair caster traffic, and some degree of appearance change is to be expected.

Hilton Home2 - Vibrant Scheme

Carpet Base @ Corridor, TV Lounge, and Meeting Room
(A) CP-10.1



Product Information

Style Number/Color	728S / X391
Product Type	Carpet Cove Base
Construction	CPG - Cut Pile Graphics
Fiber	Lextron Enviro-Green Nylon
Dye Method	100 % Solution Dyed
Primary Backing	Woven Polypropylene
Secondary Backing	Action Bac



Specifications

Gauge	1/10
Stitches per Inch	9
Tufted Weight	26 oz per sq/yd
Total Weight Finished	64 oz
Pile Thickness	.250 in.
Width	12 ft.
Suggested Install	Glue per Manufacturer's Recommendation

Performance

Traffic Class	Recommended for Cove Base only
Radiant Panel	Class I
Smoke Density	ASTM E 662 Less than 450
Pattern Repeatat	025"W x 025"L

Warranty **10 Year Wear Guarantee**

Enviro-Green yarn has 10% pre-consumer recycled content.
Recommended for Cove Base only

Carpet should be installed in accordance with the Carpet and Rug Institute's standard
CRI-104/CRI-105.

Pattern streaks and banding are visually apparent streaking in patterned carpet resulting from
linear juxtaposition of pattern elements visible in both length and width direction.

IT IS NOT A CARPET DEFECT, but is inherent in solution dyed graphic and cut/loop patterns.

Product Notes

1. Specifications are subject to nominal manufacturing variances. Material supply and/or manufacturing processes may necessitate changes without notice.
Colors may vary slightly from dye lot to dye lot.
2. U.S. Patent numbers: 4,849,267; 6,406,574, US 9,988,760 B2
3. Chair pads are recommended for optimum textural performance. Absent the use of chair pads, more intensive maintenance will be required for areas in direct contact with chair caster traffic, and some degree of appearance change is to be expected.

Hilton Home2 - Vibrant Scheme

Lobby Tile

(A) CPT-11

Product Information

Style Number/Color	B0305 / 886
Product Type	Carpet Tile
Construction	Multi-Level Pattern Loop/Cut
Fiber	Lextron Enviro-Green Nylon
Dye Method	100 % Solution Dyed
Primary Backing	Woven PET
Secondary Backing	Flex-Aire Modular® Cushion

Specifications

Size	24 in. x 24 in. Tile
Gauge	1/10
Stitches per Inch	9
Tufted Weight	24 oz per sq/yd
Total Weight Finished	121 oz
Pile Thickness	.250 in. Approx.
Total Thickness	.468 in. Approx.
Suggested Install	Vertical Ashlar/Quarter Turn

Performance

Traffic Class	Heavy
(TARR) Pill Test	Pass
Radiant Panel	Class I
Flammability	ASTM E 648 Class I
Smoke Density	ASTM E 662 Less than 450
LEED Info	Green Label Plus Certified - GLP8320

Warranty **10 Year Limited Warranty**

Enviro-Green yarn has 10% pre-consumer recycled content.
Recommended for heavy carpet traffic levels.

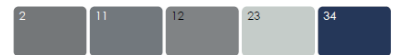
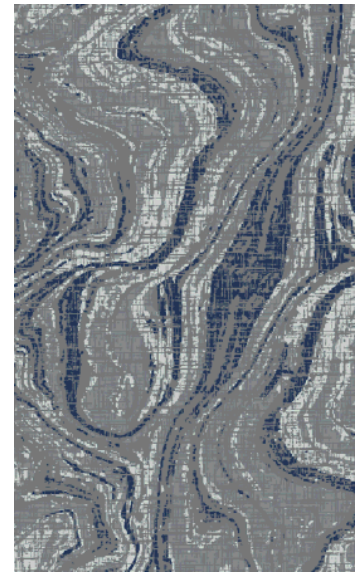
Carpet should be installed in accordance with the Carpet and Rug Institute's standard
CRI-104/CRI-105.

Pattern streaks and banding are visually apparent streaking in patterned carpet resulting from
linear juxtaposition of pattern elements visible in both length and width direction.

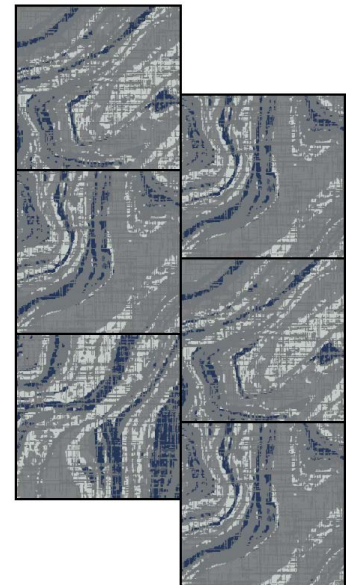
IT IS NOT A CARPET DEFECT, but is inherent in solution dyed graphic and cut/loop patterns.
and cut/loop patterns.

Product Notes

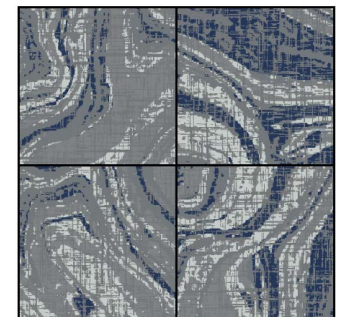
1. Specifications are subject to nominal manufacturing variances. Material supply and/or manufacturing processes may necessitate changes without notice.
Colors may vary slightly from dye lot to dye lot.
2. U.S. Patent numbers: 4,849,267; 6,406,574, US 9,988,760 B2
3. Chair pads are recommended for optimum textural performance. Absent the use of chair pads, more intensive maintenance will be required for areas in direct contact with chair caster traffic, and some degree of appearance change is to be expected.



9" X 36" RANDOM CUT TILE



INSTALL: 1/3 VERTICAL ASHLAR

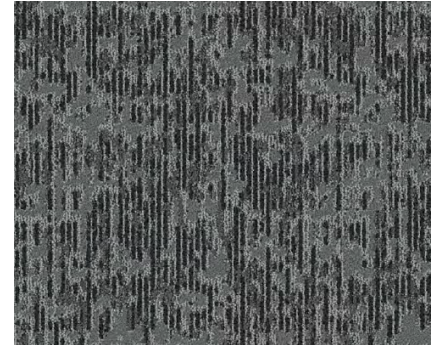


INSTALL: QUARTER TURN

Hilton Home 2 - Vibrant Scheme
Stairwell Broadloom
(A) CPT-12

Product Information

Style Number/Color	B0304 / 882
Product Type	Broadloom
Construction	Multi-Level Pattern Cut/Loop
Fiber	Lextron Enviro-Green Nylon
Dye Method	100 % Solution Dyed
Primary Backing	Woven Polypropylene
Secondary Backing	Actionbac



Specification

Size	12 ft. Width
Gauge	1/10
Stitches per Inch	10
Tufted Weight	36 oz per sq/yd
Total Weight Finished	72 oz per sq/yd
Pile Thickness	.312 in. Approx.
Total Thickness	.375 in. Approx.
Pattern Repeat	36 in. x 27 in.



Performance

Traffic Class (TARR)	Heavy
Pill Test	Pass
Radiant Panel	Class I
Flammability	ASTM E 648 Class I
Smoke Density	ASTM E 662 Less than 450
LEED Info	Green Label Plus Certified - GLP2380

Warranty **10 Year Limited Warranty**

Enviro-Green yarn has 10% pre-consumer recycled content.
 Recommended for heavy (public space) carpet traffic levels.

Carpet should be installed in accordance with the Carpet and Rug Institute's standard CRI-104/CRI-105.
 Pattern streaks and banding are visually apparent streaking in patterned carpet resulting from linear juxtaposition of pattern elements visible in both length and width direction.
 IT IS NOT A CARPET DEFECT, but is inherent in solution dyed graphic and cut/loop patterns.

Pattern streaks and banding are visually apparent streaking in patterned carpet resulting from linear juxtaposition of pattern elements visible in both length and width direction.
 IT IS NOT A CARPET DEFECT, but is inherent in solution dyed graphic and cut/loop patterns.

All Specifications subject to normal manufacturing tolerance.

Hilton Home2 - Vibrant Scheme

Resilient Products

Product Information: Wall Base

- Hilton Tag#** (A) RB-01 Base @ ERT Guestroom
(A) RB-10 Base @ Employee Breakroom
(A) RB-11 Base @ Fitness

Style Number MW-48-S4
Color 48 Grey
Product Type Millwork Wall Base
Size 4"H x .250"Thick x 8 ft.Lengths
Carton Size 64 ft per carton



- Hilton Tag#** (A) RB-12 Base @ Engineering & Housekeeping

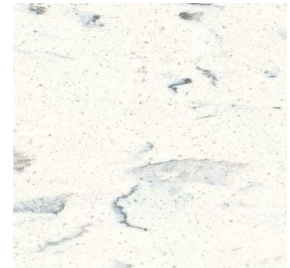
Style Number CB-38
Color 38 Pewter
Product Type Traditional Vinyl Wall Base
Size 4"H x 1/8"Thick x 120 ft.Coil
Carton Size 120 ft per carton



Product Information: Vinyl Composition Tile

- Hilton Tag#** (A) VCT-10 VCT @ Engineering

Style Number VCT II
Color 580 Mineral White
Product Type Vinyl Composition Tile
Size 12" x 12" x 1/8" Thick
Carton Size 45 sq ft per carton (45 tiles/carton)



Product Information: ERT

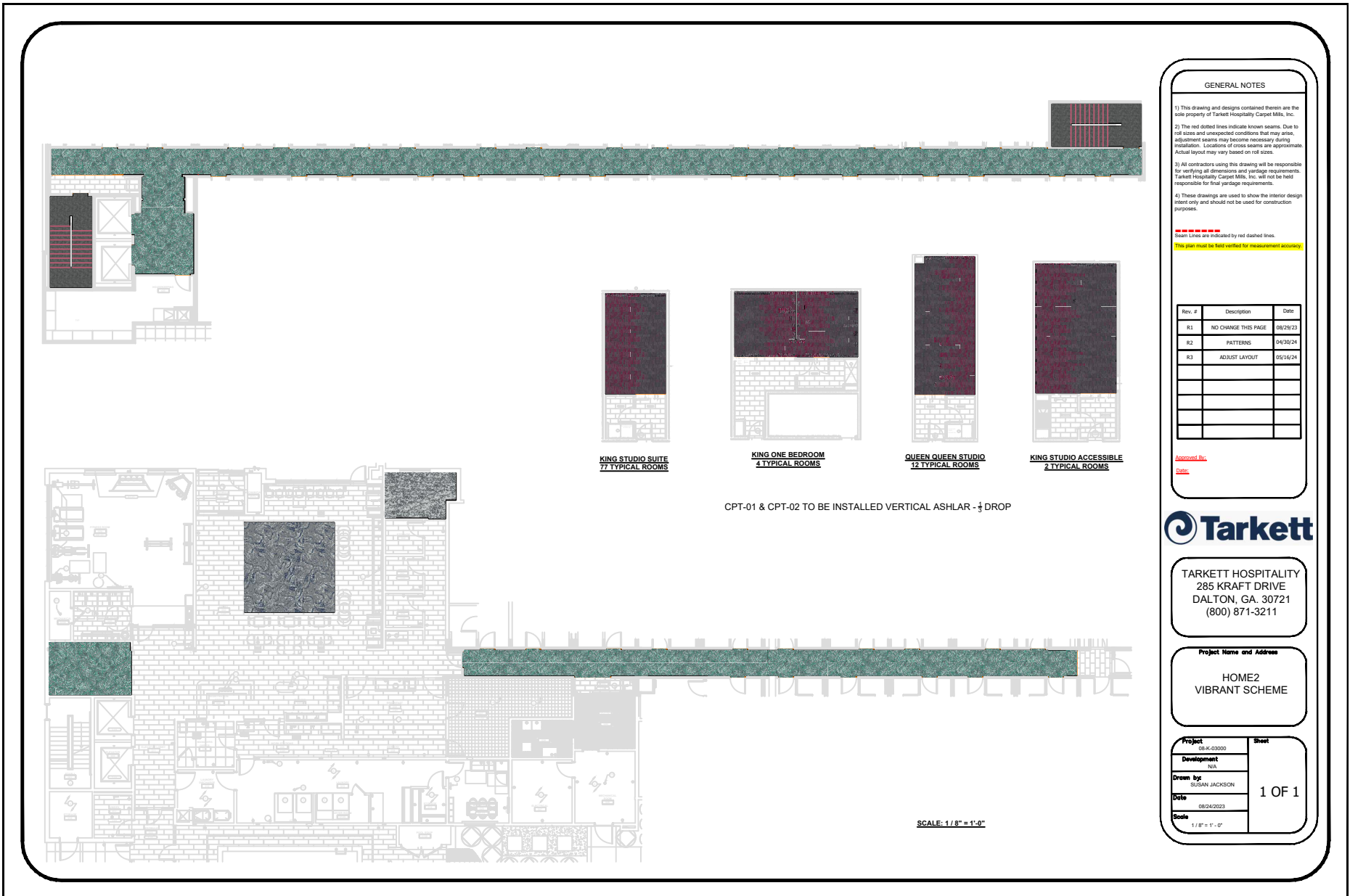
- Hilton Tag#** (A) RF-11 ERT @ Employee Breakroom & Guestroom Alt

Style Number AccoreCCRE-0017-7X48-VT
Color Limed Oak 0017
Product Type LVT/ERT - Enhanced Resilient Tile
Size 7" W x 48" L
Carton Size 23.64 sq ft per carton



Home 2 - Vibrant Scheme

Prototypical Flooded Plan



GENERAL NOTES

- 1) This drawing and designs contained therein are the sole property of Tarkett Hospitality Carpet Mills, Inc.
- 2) The red dotted lines indicate known seams. Due to roll sizes and unexpected conditions that may arise, adjustment seams may become necessary during installation. Locations of cross seams are approximate. Actual layout may vary based on roll sizes.
- 3) All contractors using this drawing will be responsible for verifying all dimensions and package requirements. Tarkett Hospitality Carpet Mills, Inc. will not be held responsible for final package requirements.
- 4) These drawings are used to show the interior design intent only and should not be used for construction purposes.

Seam Lines are indicated by red dashed lines.
This plan must be field verified for measurement accuracy.

Rev. #	Description	Date
R1	NO CHANGE THIS PAGE	08/29/23
R2	PATTERNS	04/30/24
R3	ADJUST LAYOUT	05/16/24

Approved By: _____
Date: _____

Tarkett

TARKETT HOSPITALITY
285 KRAFT DRIVE
DALTON, GA. 30721
(800) 871-3211

Project Name and Address

HOME2
VIBRANT SCHEME

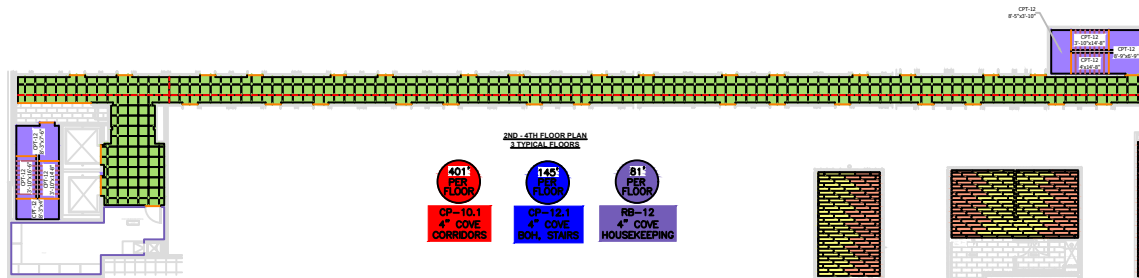
Project	08-K-03000	Sheet	1 OF 1
Development	N/A		
Drawn by:	SEAN JACKSON		
Date	08/24/2023		
Scale	1/8" = 1'-0"		

CPT-01 & CPT-02 TO BE INSTALLED VERTICAL ASHLAR - 1/4 DROP

SCALE: 1/8" = 1'-0"

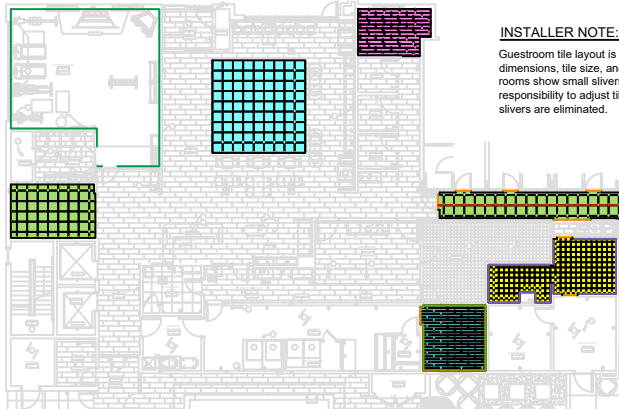
Home 2 - Vibrant Scheme

Prototypical Seaming Diagram



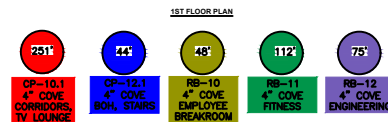
TARKETT Carpet Legend				
Carpet ID	Pattern / Skelcoff	Width	Repeat	Description
CP-01.1	7285 - 8531	12'-0"	N/A	4" COVE BASE - GUESTROOMS
CP-01.2	7285 - X391	12'-0"	N/A	4" COVE BASE - CORRIDORS, TV LOUNGE
CP-01.3	7285 - 8531	12'-0"	N/A	4" COVE BASE - BOH, STAIRS
CPT-01	80327 - 885	0'-9" x 3'-0"	Tile	GUESTROOM - MAIN
CPT-02	80331 - 885	0'-9" x 3'-0"	Tile	GUESTROOM - ACCENT
CPT-10	80311 - 883	2'-0" x 2'-0"	Tile	CORRIDORS
CPT-11	80305 - 886	2'-0" x 2'-0"	Tile	LOBBY
CPT-12	80304 - 882	12'-0"	36" WIDE X 22" RUNNING	STAIRWELLS (BOH OPTION)
CPT-12ALY	80329 - 885	9' x 3'	Tile	BOH OPTION
RB-01	NW-48-S4 GREY	4"	N/A	4" RESILIENT BASE - GUESTROOMS @ ERT
RB-10	NW-48-S4 GREY	4"	N/A	4" RESILIENT BASE - EMPLOYEE BREAKROOM
RB-11	NW-48-S4 GREY	4"	N/A	4" RESILIENT BASE - FITNESS
RB-12	CB-38 PEWTER	4"	N/A	4" RESILIENT BASE - ENGINEERING & HOUSEKEEPING
RF-11	ACCORE - LIMED OAK	7' x 4'	Tile	EMPLOYEE BREAKROOM & GUEST ALT
VCT-10	VCT II - S80 MINERAL WHITE	1' x 1'	Tile	ENGINEERING

** RB-01 TO BE USED ONLY WHEN USING ERT-11 GUEST ALT IN PLACE OF CPT-01 & CPT-02



INSTALLER NOTE:

Guestroom tile layout is based on a third drop. Due to room dimensions, tile size, and estimating program limitations, some rooms show small slivers of tile at the walls. It is the installers responsibility to adjust tile length/placement to ensure these slivers are eliminated.



CPT-01 & CPT-02 TO BE INSTALLED VERTICAL ASHLAR - ↓ DROP

SCALE: 3/32" = 1'-0"

GENERAL NOTES

- 1) This drawing and designs contained herein are the sole property of Tarkett Hospitality Carpet Mills, Inc.
- 2) The red dotted lines indicate known seams. Due to roll sizes and unexpected conditions that may arise, adjustment seams may become necessary during installation. Locations of cross seams are approximate. Actual layout may vary based on roll sizes.

3) All contractors using this drawing will be responsible for verifying all dimensions and package requirements. Tarkett Hospitality Carpet Mills, Inc. will not be held responsible for final package requirements.

- 4) These drawings are used to show the interior design intent only and should not be used for construction purposes.

Seam Lines are indicated by red dashed lines.
This plan must be field verified by measurement accuracy.

Rev. #	Description	Date
R1	ADD RESILIENT PRODUCTS	08/29/23
R2	PATTERNS	04/30/24
R3	ADJUST LAYOUT	05/16/24

Approved By:
Date:



TARKETT HOSPITALITY
285 KRAFT DRIVE
DALTON, GA. 30721
(800) 871-3211

Project Name and Address

HOME2
VIBRANT SCHEME

Project	Sheet
Development BK-K0300 N/A	1 OF 1
Drawn by SUSAN JACKSON	
Date 08/24/2023	
Scale 3/32" = 1'-0"	

Every step matters

Sustainability

Every Step Matters. Tarkett's holistic approach to sustainability is woven into the fabric of how we do business and sits at the heart of our day-to-day decision making. For decades, we've scrutinized every detail of our business for its impact on resources such as soil, water, air, and climate—because when you're trailblazing a more sustainable future, every step matters.

Corporate Transparency is fundamental to our values and the way we do business. Third-party assessments serve as a testament to our performance, earning the trust of customers and partners.



EcoVadis

Tarkett is proud to have been awarded a Platinum sustainability rating by EcoVadis with a score of 81/100, which places us in the top 1% of rated companies. EcoVadis assesses CSR policies, actions, and results across four themes and 21 CSR criteria: environment, labor and human rights, ethics, and sustainable procurement.



Carbon Disclosure Project (CDP)

Tarkett's "A" score for climate change impact positions us at the leadership level of CDP's grading system.



Science Based Targets Initiative

Tarkett's 2030 carbon reduction targets are approved by the Science Based Targets initiative (SBTi). We have two 2030 targets guiding nearly every sustainability initiative at Tarkett:

1. Reduce carbon emissions by 30% across Scopes 1, 2, and 3.
2. Increase recycled content in our products from 18% in 2019 to 30% by 2030.



Start your next project with ReStart®

We're committed to creating a circular economy where nothing goes to waste. Take part by starting your next project with Tarkett's ReStart® flooring take-back and recycling program. The ReStart program will accept any type of flooring from any manufacturer. Join us as we innovate and collaborate towards a healthier future for this generation and generations to come.

Contact Us

HiltonOrders@tarkett.com

800-871-3211

Tarkett Hospitality

285 Kraft Drive
Dalton, GA 30721
800.871.3211

www.tarketthospitality.com