

avid

AN IHG HOTEL



 **Tarkett Hospitality**

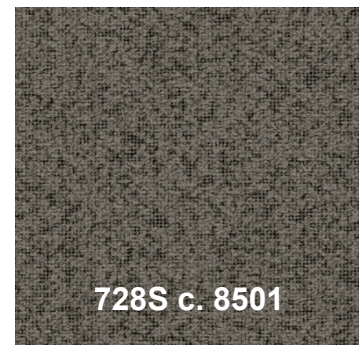
Manufacturer: Tarkett Hospitality
Address: 285 Kraft Drive
Dalton, GA 30721

Phone: 800.871.3211
Contact: IHG.Orders@tarkett.com
Web: www.tarketthospitality.com

avid Hotels: Public Areas Carpet Cove Base @ Corridor

Product Information - IIHG SPEC NO: REP-CB01

| | |
|--------------------|---|
| Style Number/Color | 728S c. 8501 |
| Product Type | Carpet Cove Base (4"H) |
| Construction | CPG - Cut Pile Graphics |
| Fiber | 100% C.F. Lextron Enviro-Green Nylon |
| Dye Method | Solution Dyed |
| Primary Backing | Woven Polypropylene |
| Secondary Backing | Action Bac |



Specifications

| | |
|-----------------------|---|
| Gauge | 1/10 |
| Stitches per Inch | 9 |
| Tufted Weight | 26 oz per sq/yd |
| Total Weight Finished | 64 oz |
| Pile Thickness | .250 in. Approx. |
| Width | 12 ft |
| Suggested Install | Adhesive per Manufacturer's Recommendation |

Performance

| | |
|----------------|---------------------------------------|
| Traffic Class | Recommended for Cove Base only |
| Radiant Panel | Class I |
| Smoke Density | ASTM E 662 Less than 450 |
| Pattern Repeat | .25 in. W x .25 in. L |

Warranty **10 Year Wear Guarantee**

Enviro-Green yarn has 10% pre-consumer recycled content.
Recommended for heavy carpet traffic levels.

Carpet should be installed in accordance with the Carpet and Rug Institute's standard CRI-104/CRI-105.
Pattern streaks and banding are visually apparent streaking in patterned carpet resulting from linear juxtaposition of pattern elements visible in both length and width direction.

IT IS NOT A CARPET DEFECT, but is inherent in solution dyed graphic and cut/loop patterns.

Product Notes

1. Specifications are subject to nominal manufacturing variances. Material supply and/or manufacturing processes may necessitate changes without notice.
Colors may vary slightly from dye lot to dye lot.
2. U.S. Patent numbers: 4,849,267; 6,406,574, US 9,988,760 B2
3. Chair pads are recommended for optimum textural performance. Absent the use of chair pads, more intensive maintenance will be required for areas in direct contact with chair caster traffic, and some degree of appearance change is to be expected.

avid Hotels: Public Areas Carpet Carpet Wall Base @ Stairwells

Product Information - IHG SPEC NO: REP-CB02

| | |
|--------------------|--|
| Style Number/Color | 728S c. 8503 |
| Product Type | Carpet Cove Base (4"H Main) (12"H Treads) |
| Construction | CPG - Cut Pile Graphics |
| Fiber | 100% C.F. Lextron Enviro-Green Nylon |
| Dye Method | Solution Dyed |
| Primary Backing | Woven Polypropylene |
| Secondary Backing | Action Bac |



Specifications

| | |
|-----------------------|---|
| Gauge | 1/10 |
| Stitches per Inch | 9 |
| Tufted Weight | 26 oz per sq/yd |
| Total Weight Finished | 64 oz |
| Pile Thickness | .250 in. Approx. |
| Width | 12 ft |
| Suggested Install | Adhesive per Manufacturer's Recommendation |

Performance

| | |
|----------------|---------------------------------------|
| Traffic Class | Recommended for Cove Base only |
| Radiant Panel | Class I |
| Smoke Density | ASTM E 662 Less than 450 |
| Pattern Repeat | .25 in. W x .25 in. L |

Warranty **10 Year Wear Guarantee**

Enviro-Green yarn has 10% pre-consumer recycled content.
Recommended for heavy carpet traffic levels.

Carpet should be installed in accordance with the Carpet and Rug Institute's standard CRI-104/CRI-105.

Pattern streaks and banding are visually apparent streaking in patterned carpet resulting from linear juxtaposition of pattern elements visible in both length and width direction.

IT IS NOT A CARPET DEFECT, but is inherent in solution dyed graphic and cut/loop patterns.

Product Notes

1. Specifications are subject to nominal manufacturing variances. Material supply and/or manufacturing processes may necessitate changes without notice.
Colors may vary slightly from dye lot to dye lot.
2. U.S. Patent numbers: 4,849,267; 6,406,574, US 9,988,760 B2
3. Chair pads are recommended for optimum textural performance. Absent the use of chair pads, more intensive maintenance will be required for areas in direct contact with chair caster traffic, and some degree of appearance change is to be expected.

HARTEX®

IHG SPEC NO: REP-CP01
Tarkett Style: LPX32

HARTEX® 32 SPECIFICATIONS

SPECIFICATION DATA

| | |
|--------------------|--|
| Product Name | Hartex® 32 |
| Material Weight | 32 oz./sq. yd. |
| Density | 8.0 lbs./cu. ft. |
| Thickness | 0.335" |
| Product Dimensions | 6' x 60' (40 SY) |
| Color | Gray |
| Tensile Strength | 161.4 lbs |
| Traffic Class | Heavy |
| FHA Class | 2 |
| Material Content | 100% Pre-Consumer Synthetic Fiber – Needle-punched and Thermal Bonded |
| Indoor Air Quality | CRI Green Label Plus-certified |



Pad to be used with REP-CPT05

FLAME CERTIFICATION

| | | |
|---------------|---------|-------------|
| Pill Test | Pass | DOC-FF 1-70 |
| Radiant Panel | Class I | ASTM E648 |
| Smoke Test | <450 | ASTM E662 |

THERMAL INSULATION

| | |
|---------|------|
| R-Value | 2.12 |
|---------|------|

PRODUCT OVERVIEW

Hartex 32 is made from 100% pre-consumer synthetic fiber and will not support the growth of mold or mildew, and offers a quick and easy installation process. Hartex 32 has excellent thermal insulation and acoustical properties. Hartex 32 provides comfort underfoot and is less fatiguing than direct-glue-down installations. Contributes to LEED® credits. LEED points must be considered along with other building components and must be determined by the specifier/architect or LEED accredited representative.

Hartex 32 is designed for use in commercial and hospitality applications, including, but not limited to: guest rooms, meeting rooms, offices, dorm rooms, and retail space. Hartex 32 should be installed using conventional stretch-in installation only.



Leggett & Platt
INCORPORATED

P.O. Box 727 | 34 Industrial Court E | Villa Rica, GA 30180 | 800.241.1148 | P 770.459.3653 | F 770.459.3655 | LPHospitality.com

Accore™

Product Specification

1. PROPRIETARY PRODUCT/MANUFACTURER

- 1.1. **Proprietary Product:** Accore Luxury Vinyl flooring is a rigid core construction engineered from the inside, out—and designed to outperform the extreme demands of today's hospitality environments. Suitable for light commercial hospitality environments such as guest rooms.
- 1.2. **Manufacturer:**
Tarkett Hospitality Phone: (800)-871-3211
285 Kraft Dr..
Dalton, GA 30721
Web: www.tarketthospitality.com
- 1.3. **Proprietary Product Description:**
- 1.3.1. **Construction:** Tarkett Accore is an Ortho-Phthalate-Free, 100% virgin material Rigid Core luxury vinyl constructed with a plastic core and an IXPE acoustical backing.
- 1.3.2. **Characteristics:**
- **Edge treatment:** Micro-Bevel
 - **Overall thickness:** 0.197" (5 mm)
 - **Wearlayer Thickness:** .020" (0.51 mm)
 - **Core Thickness:** 0.157" (4 mm)
 - **Accoustical Backing:** 0.039" (1 mm) IXPE
 - **Installation System:** Click-Drop-Lock (I4F)
- 1.3.3. **Tile/Plank size and Packaging:**
7" x 60" (17.78 cm x 152.4 cm)
8 tile per box, 23.62 ft² (2.19 m²), 38 lbs. (17.24kg),
55 boxes per pallet

2. PRODUCT PERFORMANCE AND TECHNICAL DATA

- 2.1. **Rigid Core Polymeric Floor Tile (ASTM F3261):** Class I, Type A or B, Grade 1, Backing Class B
- 2.2. **Dimensional Stability (ASTM F2199):** Passes
- 2.3. **Indentation Recovery (ASTM F1914):** Passes
- 2.4. **Heat Stability (ASTM F1514):** $\Delta E \leq 8$
- 2.5. **Light Stability (ASTM F1515):** $\Delta E \leq 8$
- 2.6. **Impact Sound Reduction (ASTM E2179):** $\Delta IIC \geq 20dB$
- 2.7. **IIC Impact Sound Reduction Rating (ASTM E492):** 68 (tested with 6" concrete slab with drop ceiling)
- 2.8. **Chemical Resistance (ASTM F925):** Passes
- 2.9. **VOC Requirements (ASTM D5116):** $< 0.1 \text{ mg/m}^3$

3. INSTALLATION

See Accore installation instructions for complete details.
Floating installations do not require any adhesives.
For Glue Down installations, see below:

3.1. Adhesives:

- **Tarkett C-GU High Moisture Adhesive**
Porous & Non-Porous Substrates: 125-150 sq. ft. per gallon

4. AVAILABILITY AND COST

Available direct through Tarkett retailers nationwide.

5. MAINTENANCE

72 hours after installation is completed, initial maintenance procedures must be implemented in accordance with manufacturer's requirements. Refer to Even Plane Maintenance Instructions for complete maintenance details.

6. TECHNICAL SERVICES

Visit us on the web at www.tarketthospitality.com
Contact Technical support at (800) -871-3211

7. WARRANTY

Limited 15-year Light Commercial warranty. For complete details, contact Tarkett or an authorized Tarkett retailer.



Accore, Color 0027 Greige

avid Hotels: Public Areas Carpet Broadloom Carpet @ Corridor

Product Information - IHG SPEC NO: REP-CPT01

| | |
|--------------------|--------------------------------------|
| Style Number/Color | B0614 c. 172 |
| Product Type | Intrepid Broadloom |
| Construction | Multi-Level Pattern Cut/Loop |
| Fiber | CF Lextron Enviro-Green Nylon |
| Dye Method | 100 % Solution Dyed |
| Primary Backing | Woven Polypropylene |
| Secondary Backing | LX24 Cushion |

Specifications

| | |
|-----------------------|-------------------------|
| Size | 12 ft. Width |
| Gauge | 1/10 |
| Stitches per Inch | 10 |
| Tufted Weight | 30 oz per sq/yd |
| Total Weight Finished | 106 oz |
| Pile Thickness | .250 in. |
| Total Thickness | .375 in. |
| Pattern Repeat | Approx. 72 in x 121 in. |

Performance

| | |
|----------------------|---|
| Traffic Class (TARR) | Moderate |
| Pill Test | Pass |
| Radiant Panel | Class I |
| Flammability | ASTM E 648 Class I |
| Smoke Density | ASTM E 662 Less than 450 |
| LEED Info | Green Label Plus Certified - GLP2380 |

Warranty

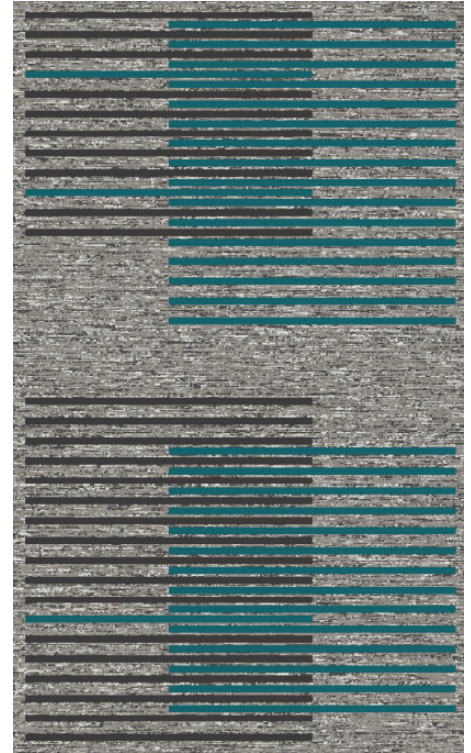
10 Year Limited Warranty

Enviro-Green yarn has 10% pre-consumer recycled content.
Recommended for heavy (public space) carpet traffic levels.

Carpet should be installed in accordance with the Carpet and Rug Institute's standard CRI-104/CRI-105.
Pattern streaks and banding are visually apparent streaking in patterned carpet resulting from linear juxtaposition of pattern elements visible in both length and width direction.
IT IS NOT A CARPET DEFECT, but is inherent in solution dyed graphic and cut/loop patterns.

Pattern streaks and banding are visually apparent streaking in patterned carpet resulting from linear juxtaposition of pattern elements visible in both length and width direction.
IT IS NOT A CARPET DEFECT, but is inherent in solution dyed graphic and cut/loop patterns.

All Specifications subject to normal manufacturing tolerance.



avid Hotels: Public Areas Carpet

Broadloom Carpet @ Corridor Door Drops & Transitions

Product Information - IHG SPEC NO: REP-CPT02

| | |
|--------------------|--------------------------------------|
| Style Number/Color | B0620 c. 172 |
| Product Type | Intrepid Broadloom |
| Construction | Multi-Level Pattern Cut/Loop |
| Fiber | CF Lextron Enviro-Green Nylon |
| Dye Method | 100 % Solution Dyed |
| Primary Backing | Woven Polypropylene |
| Secondary Backing | LX24 Cushion |

Specifications

| | |
|-----------------------|------------------------------------|
| Size | 12 ft. Width |
| Gauge | 1/10 |
| Stitches per Inch | 10 |
| Tufted Weight | 30 oz per sq/yd |
| Total Weight Finished | 106 oz |
| Pile Thickness | .250 in. |
| Total Thickness | .375 in. |
| Pattern Repeat | Approx. 36 in. W x 63 in. L |



Performance

| | |
|----------------------|---|
| Traffic Class (TARR) | Moderate |
| Pill Test | Pass |
| Radiant Panel | Class I |
| Flammability | ASTM E 648 Class I |
| Smoke Density | ASTM E 662 Less than 450 |
| LEED Info | Green Label Plus Certified - GLP2380 |

Warranty

10 Year Limited Warranty

Enviro-Green yarn has 10% pre-consumer recycled content.
Recommended for heavy (public space) carpet traffic levels.

Carpet should be installed in accordance with the Carpet and Rug Institute's standard CRI-104/CRI-105.
Pattern streaks and banding are visually apparent streaking in patterned carpet resulting from linear juxtaposition of pattern elements visible in both length and width direction.
IT IS NOT A CARPET DEFECT, but is inherent in solution dyed graphic and cut/loop patterns.

Pattern streaks and banding are visually apparent streaking in patterned carpet resulting from linear juxtaposition of pattern elements visible in both length and width direction.
IT IS NOT A CARPET DEFECT, but is inherent in solution dyed graphic and cut/loop patterns.

All Specifications subject to normal manufacturing tolerance.

avid Hotels: Public Areas Carpet Broadloom Carpet @ Elevator Lobby

Product Information - IHG SPEC NO: REP-CPT03

| | |
|--------------------|--------------------------------------|
| Style Number/Color | B0612 c. 172 |
| Product Type | Intrepid Broadloom |
| Construction | Multi-Level Pattern Cut/Loop |
| Fiber | CF Lextron Enviro-Green Nylon |
| Dye Method | 100 % Solution Dyed |
| Primary Backing | Woven Polypropylene |
| Secondary Backing | LX24 Cushion |

Specifications

| | |
|-----------------------|-------------------------------|
| Size | 12 ft. Width |
| Gauge | 1/10 |
| Stitches per Inch | 10 |
| Tufted Weight | 30 oz per sq/yd |
| Total Weight Finished | 106 oz |
| Pile Thickness | .250 in. |
| Total Thickness | .375 in. |
| Pattern Repeat | Approx. 144 in. W x 312 in. L |

Performance

| | |
|----------------------|---|
| Traffic Class (TARR) | Moderate |
| Pill Test | Pass |
| Radiant Panel | Class I |
| Flammability | ASTM E 648 Class I |
| Smoke Density | ASTM E 662 Less than 450 |
| LEED Info | Green Label Plus Certified - GLP2380 |

Warranty

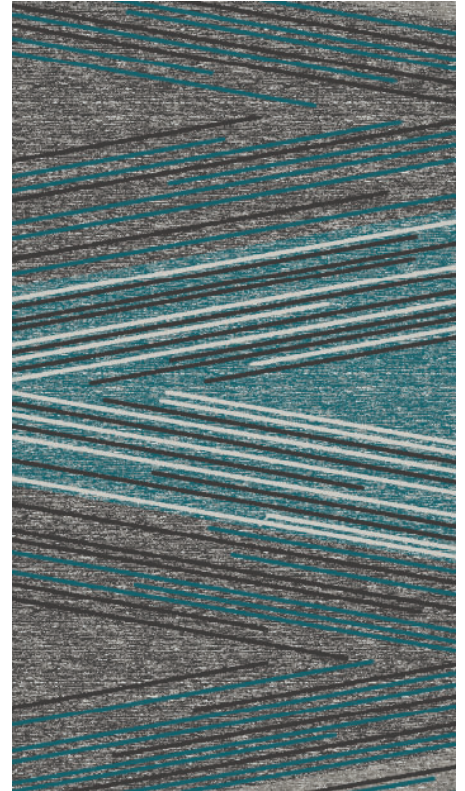
10 Year Limited Warranty

Enviro-Green yarn has 10% pre-consumer recycled content.
Recommended for heavy (public space) carpet traffic levels.

Carpet should be installed in accordance with the Carpet and Rug Institute's standard CRI-104/CRI-105.
Pattern streaks and banding are visually apparent streaking in patterned carpet resulting from linear juxtaposition of pattern elements visible in both length and width direction.
IT IS NOT A CARPET DEFECT, but is inherent in solution dyed graphic and cut/loop patterns.

Pattern streaks and banding are visually apparent streaking in patterned carpet resulting from linear juxtaposition of pattern elements visible in both length and width direction.
IT IS NOT A CARPET DEFECT, but is inherent in solution dyed graphic and cut/loop patterns.

All Specifications subject to normal manufacturing tolerance.



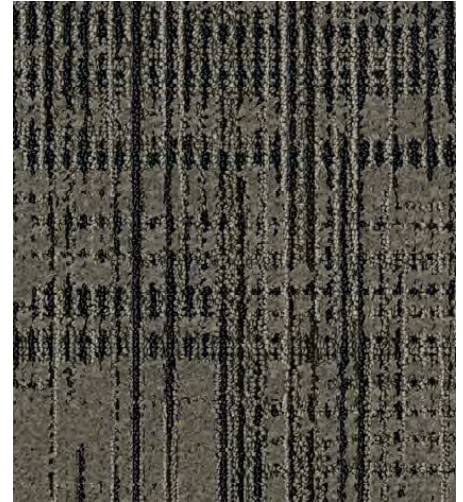
avid Hotels: Public Areas Carpet Broadloom Carpet @Stairwells

Product Information - IHG SPEC NO: REP-CPT04

| | |
|--------------------|--------------------------------------|
| Style Number/Color | B0616 c. 120 |
| Product Type | Dynamics Broadloom |
| Construction | Multi-Level Pattern Cut/Loop |
| Fiber | CF Lextron Enviro-Green Nylon |
| Dye Method | 100 % Solution Dyed |
| Primary Backing | Woven Polypropylene |
| Secondary Backing | Actionbac |

Specifications

| | |
|-----------------------|-------------------------------------|
| Size | 12 ft. Width |
| Gauge | 1/10 |
| Stitches per Inch | 10 |
| Tufted Weight | 32 oz per sq/yd |
| Total Weight Finished | 68 oz |
| Pile Thickness | .250 in. |
| Pattern Repeat | Approx. 72 in. W x 131 in. L |



Performance

| | |
|----------------------|---|
| Traffic Class (TARR) | Moderate |
| Pill Test | Pass |
| Radiant Panel | Class I |
| Flammability | ASTM E 648 Class I |
| Smoke Density | ASTM E 662 Less than 450 |
| LEED Info | Green Label Plus Certified - GLP2380 |

Warranty **10 Year Limited Warranty**

Enviro-Green yarn has 10% pre-consumer recycled content.
Recommended for heavy (public space) carpet traffic levels.

Carpet should be installed in accordance with the Carpet and Rug Institute's standard CRI-104/CRI-105.
Pattern streaks and banding are visually apparent streaking in patterned carpet resulting from linear juxtaposition of pattern elements visible in both length and width direction.
IT IS NOT A CARPET DEFECT, but is inherent in solution dyed graphic and cut/loop patterns.

Pattern streaks and banding are visually apparent streaking in patterned carpet resulting from linear juxtaposition of pattern elements visible in both length and width direction.
IT IS NOT A CARPET DEFECT, but is inherent in solution dyed graphic and cut/loop patterns.

All Specifications subject to normal manufacturing tolerance.

**avid Hotels: Public Areas Carpet
Area Rug @ Lobby Lounge**

Product Information - IHG SPEC NO: REP-RG01

| | |
|--------------------|-------------------------------|
| Style Number/Color | B062R c. 172 |
| Product Type | Intrepid Broadloom |
| Construction | Multi-Level Pattern Cut/Loop |
| Fiber | CF Lextron Enviro-Green Nylon |
| Dye Method | 100% Solution Dyed |
| Primary Backing | Woven Polypropylene |
| Backing | Actionbac |

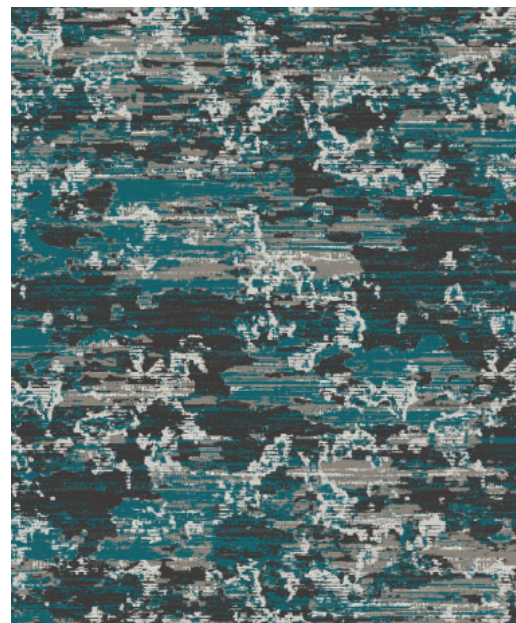
Specifications

| | |
|-----------------------|--------------------------------------|
| Size | 12ft. Width/Rug Size 11'10" x 11'10" |
| Gauge | 1/10 |
| Stitches per Inch | 8 |
| Tufted Weight | 30 oz per sq/yd |
| Total Weight Finished | 106oz |
| Pile Thickness | .250 in. |
| Total Thickness | .375 in. |
| Pattern Repeat | Approx. 72 in. W x 131 in. L |

Performance

| | |
|----------------------|--------------------------------------|
| Traffic Class (TARR) | Moderate |
| Pill Test | Pass |
| Radiant Panel | Class I |
| Flammability | ASTM E 648 Class I |
| Smoke Density | ASTM E 662 Less than 450 |
| LEED Info | Green Label Plus Certified - GLP2380 |

Warranty 10 Year Limited Warranty



Hidden Edge Binding color:

Enviro-Green yarn has 10% pre-consumer recycled content.
Recommended for heavy carpet traffic levels.

Carpet should be installed in accordance with the Carpet and Rug Institute's standard CRI-104 CRI-105. Pattern streaks and banding are visually apparent streaking in patterned carpet resulting from linear juxtaposition of pattern elements visible in both length and width direction. IT IS NOT A CARPET DEFECT, but is inherent in solution dyed graphic and cut/loop patterns.

Product Notes:

1. Specifications are subject to nominal manufacturing variances. Material supply and/or manufacturing processes may necessitate changes without notice.
Colors may vary slightly from dye lot to dye lot.
2. U.S. Patent numbers: 4,849,267; 6,406,574, US 9,988,760 B2
3. Chair pads are recommended for optimum textural performance. Absent the use of chair pads, more intensive maintenance will be required for areas in direct contact with chair caster traffic, and some degree of appearance change is to be expected.

**avid Hotels: Public Areas Carpet
Area Rug @ Lobby**

Product Information - IHG SPEC NO: REP-RG02

| | |
|--------------------|-------------------------------|
| Style Number/Color | B062R c. 172 |
| Product Type | Intrepid Broadloom |
| Construction | Multi-Level Pattern Cut/Loop |
| Fiber | CF Lextron Enviro-Green Nylon |
| Dye Method | 100% Solution Dyed |
| Primary Backing | Woven Polypropylene |
| Backing | Actionbac |

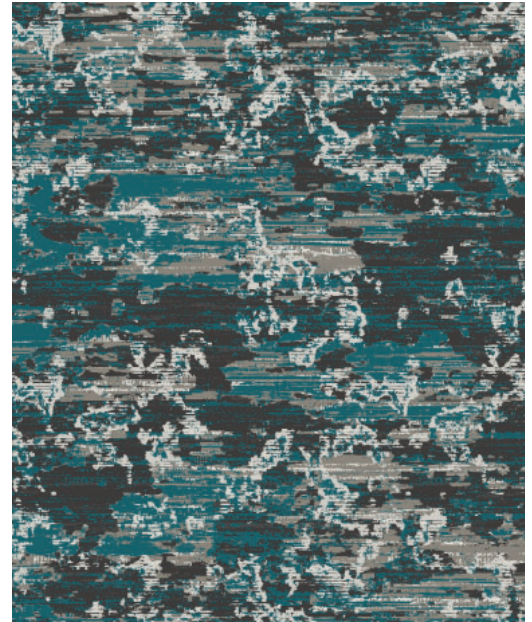
Specifications

| | |
|-----------------------|-------------------------------|
| Size | 12ft. Width/Rug Size 5' x 13' |
| Gauge | 10 |
| Stitches per Inch | 1/10 |
| Tufted Weight | 30 oz per sq/yd |
| Total Weight Finished | 106 oz |
| Pile Thickness | .250 in. |
| Total Thickness | .375 in. |
| Pattern Repeat | Approx. 72 in. W x 131 in. L |

Performance

| | |
|----------------------|--------------------------------------|
| Traffic Class (TARR) | Moderate |
| Pill Test | Pass |
| Radiant Panel | Class I |
| Flammability | ASTM E 648 Class I |
| Smoke Density | ASTM E 662 Less than 450 |
| LEED Info | Green Label Plus Certified - GLP2380 |

Warranty 10 Year Limited Warranty



Hidden Edge Binding color:

Enviro-Green yarn has 10% pre-consumer recycled content.
Recommended for heavy carpet traffic levels.

Carpet should be installed in accordance with the Carpet and Rug Institute's standard CRI-104 CRI-105. Pattern streaks and banding are visually apparent streaking in patterned carpet resulting from linear juxtaposition of pattern elements visible in both length and width direction. IT IS NOT A CARPET DEFECT, but is inherent in solution dyed graphic and cut/loop patterns.

Product Notes:

1. Specifications are subject to nominal manufacturing variances. Material supply and/or manufacturing processes may necessitate changes without notice.
Colors may vary slightly from dye lot to dye lot.
2. U.S. Patent numbers: 4,849,267; 6,406,574, US 9,988,760 B2
3. Chair pads are recommended for optimum textural performance. Absent the use of chair pads, more intensive maintenance will be required for areas in direct contact with chair caster traffic, and some degree of appearance change is to be expected.

**avid Hotels: Resilient Wall Base
Guestroom & Public Space Areas**

Resilient Wall Base

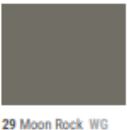
IHG SPEC NO: REG-RB01 - Guest Room Area

Style Number **MW-32-H**
Color 32 Pebble
Product Type Millwork Resilient Wall Base
Size 4.5" H x 3/8" Thick x 8' L
Carton Size 40 LF per Carton



IHG SPEC NO: REP-RB01 - Lobby

Style Number **MW-29-H**
Color 29 Moon Rock
Product Type Millwork Resilient Wall Base
Size 4.5" H x 3/8" Thick x 8' L
Carton Size 40 LF per Carton



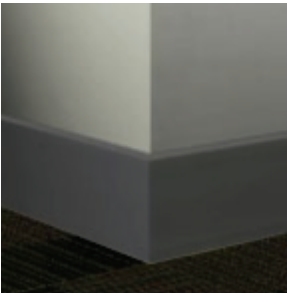
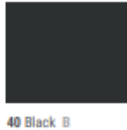
IHG SPEC NO: REP-RB04 - Heart of House: Employee Breakroom, Employee Restroom, Housekeeping Laundry, Maintenance / Engineering, Mechanical Room, Storage

Style Number **CB-29**
Color 29 Moon Rock
Product Type Millwork Resilient Wall Base
Size 4" H x 1/8" Thick x 120' L
Carton Size 120' Coil



IHG SPEC NO: REP-RB05 - Fitness Center

Style Number **MW-40-H**
Color 40 Black
Product Type Millwork Resilient Wall Base
Size 4.5" H x 3/8" Thick x 8' L
Carton Size 40 LF per Carton



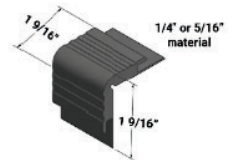
**avid Hotels: Resilient Products
Public Space Areas**

Resilient Stair Nosings

IHG SPEC NO: REP-RB02 - Stairwells

Style Number **VCD-63**
 Color 63 Burnt Umber (Use on Main Stair)
 Product Type Vinyl Stair Nose
 Size 12' L
 Carton Size 5 pieces per Carton

Style Number **VCD-VL2**
 Color VL2 Whispering Mist (Use on Top/Bottom Stair)
 Product Type Vinyl Stair Nose
 Size 12' L
 Carton Size 5 pieces per Carton

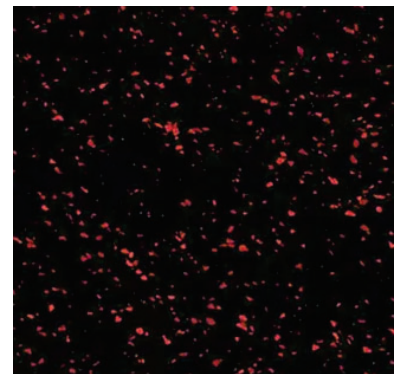


VCD-XX
 1/4" or 5/16" material
 on step and riser

Rubber Sports Flooring

IHG SPEC NO: REP-RF01- Fitness Center

Style Number **COMR-RA2**
 Color RA2 Infrared
 Product Type Recycled Composite Rubber
 Size 48" W x 50'L Roll
 Roll Size 200 sf per Roll





Tarkett Hospitality
285 Kraft Drive
Dalton, GA 30721

800.871.3211
tarketthospitality.com