

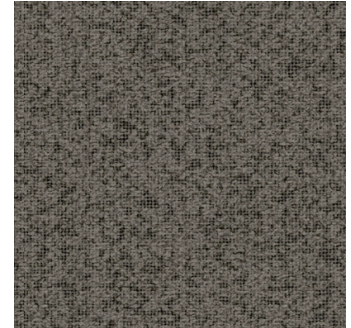


©Tarkett Hospitality

**avid Hotels: Public Areas Carpet**  
**Cove Base @ Corridor**  
**IHG SPEC NO: REP-CB01**

### Product Information

Style Number/Color	<b>728S/8501</b>
Product Type	<b>Carpet Cove Base (4"H)</b>
Construction	<b>Broadloom cut to Cove Base</b>
Fiber	<b>100% C.F. Lextron Enviro-Green Nylon</b>
Dye Method	<b>Solution Dyed</b>
Primary Backing	<b>Woven Polypropylene</b>
Secondary Backing	<b>Actionbac</b>



**728S/8501**

### Specifications

Gauge	<b>1/10</b>
Stitches per Inch	<b>9</b>
Tufted Weight	<b>26 oz per sq/yd</b>
Total Weight	<b>64 oz</b>
Finished Pile Thickness	<b>.250 in. Approx.</b>
Width	<b>12 ft</b>
Suggested Install	<b>Adhesive per Manufacturer's Recommendation</b>

### Performance

Traffic	<b>Recommended for Cove Base only</b>
Class	<b>Class I</b>
Radiant Panel	<b>ASTM E 662</b>
Smoke Density	<b>Less than 450</b>
Pattern Repeat	<b>.25 in. W x .25 in. L</b>

**Warranty**                      **10 Year Wear Guarantee**

Enviro-Green yarn has 10% pre-consumer recycled content.

Recommended for heavy carpet traffic levels.

Carpet should be installed in accordance with the Carpet and Rug Institute's standard CRI-104/  
 CRI-105. Pattern streaks and banding are visually apparent streaking in patterned carpet  
 resulting from linear juxtaposition of pattern elements visible in both length and width direction.  
 IT IS NOT A CARPET DEFECT, but is inherent in solution dyed graphic and cut/loop patterns.

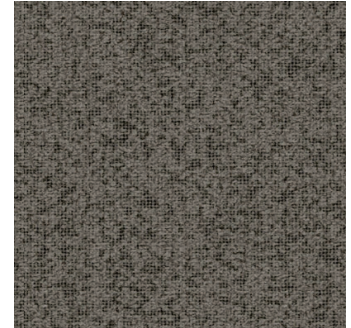
#### Product Notes:

1. Specifications are subject to nominal manufacturing variances. Material supply and/or manufacturing processes may necessitate changes without notice.
2. Colors may vary slightly from dye lot to dye lot.
3. U.S. Patent numbers: 4,849,267; 6,406,574, US 9,988,760 B2
4. Chair pads are recommended for optimum textural performance. Absent the use of chair pads, more intensive maintenance will be required for areas in direct contact with chair caster traffic, and some degree of appearance change is to be expected.

**avid Hotels: Public Areas Carpet**  
**Carpet Wall Base @ Stairwells**  
**IHG SPEC NO: REP-CB02**

#### Product Information

Style Number/Color	<b>728S/8503</b>
Product Type	<b>Carpet Cove Base (4" Main/12"H Treads)</b>
Construction	<b>Broadloom cut to Cove Base</b>
Fiber	<b>100% C.F. Lextron Enviro-Green Nylon</b>
Dye Method	<b>Solution Dyed</b>
Primary Backing	<b>Woven Polypropylene</b>
Secondary Backing	<b>Actionbac</b>



**728S/8503**

#### Specifications

Gauge	<b>1/10</b>
Stitches per Inch	<b>9</b>
Tufted Weight	<b>26 oz per sq/yd</b>
Total Weight	<b>64 oz</b>
Finished Pile Thickness	<b>.250 in. Approx.</b>
Width	<b>12 ft</b>
Suggested Install	<b>Adhesive per Manufacturer's Recommendation</b>

#### Performance

Traffic Class	<b>Recommended for Cove Base only</b>
Radiant Panel	<b>Class I</b>
Smoke Density	<b>ASTM E 662 Less than 450</b>
Pattern Repeat	<b>.25 in. W x .25 in. L</b>

<b>Warranty</b>	<b>10 Year Wear Guarantee</b>
-----------------	-------------------------------

Enviro-Green yarn has 10% pre-consumer recycled content.

Recommended for heavy carpet traffic levels.

Carpet should be installed in accordance with the Carpet and Rug Institute's standard CRI-104/  
 CRI-105. Pattern streaks and banding are visually apparent streaking in patterned carpet  
 resulting from linear juxtaposition of pattern elements visible in both length and width direction.  
 IT IS NOT A CARPET DEFECT, but is inherent in solution dyed graphic and cut/loop patterns.

#### Product Notes:

1. Specifications are subject to nominal manufacturing variances. Material supply and/or manufacturing processes may necessitate changes without notice.
2. Colors may vary slightly from dye lot to dye lot.
3. U.S. Patent numbers: 4,849,267; 6,406,574, US 9,988,760 B2
4. Chair pads are recommended for optimum textural performance. Absent the use of chair pads, more intensive maintenance will be required for areas in direct contact with chair caster traffic, and some degree of appearance change is to be expected.

**avid Hotels: Guestroom LVT**  
**LVT @ Guestroom**  
**IHG SPEC NO: REG-LVT01**

## Product Information

Product Type	Luxury Vinyl Tile
Style Number	ACCRES-0027-7X60-VT
Construction	Rigid Core Luxury Vinyl Tile with Acoustical backing
Material	Phthalate-free, 100% Virgin Material
Edge Treatment	Micro-Bevel
Reusable Content	100% Reclaimable
Installation System	Click, Drop Lock System
Installation Method	1/3 Brick Ashlar

## Specifications

Plank Size	7"x 60"
Total Thickness	5mm (0.197")
Wear Layer Thickness	20 mil (0.51mm)
Acoustical Backing Layer	IXPE (1 mm)
Sq. Ft. Per Carton	23.64 sq. ft.
Planks Per Carton	8 (23.62sq ft, 38 lbs)
Cartons Per Pallet	55

## Performance

ASTM F2199	Passes
ASTM F1914	Passes (PSI Equivalent > 5,000 lbs.)
ASTM F1514	Passes
ASTM F1515	Passes
ASTM E2179	$\Delta$ IIC $\geq$ 20 dB
IIC Impact Sound Reduction Rating	IIC 68 (Tested with 6" concrete slab with drop ceiling)
ASTM F925	Passes
ASTM D5116	Passes < 0.1 mg/m <sup>3</sup>
Scratch/Scuff/Abrasion Properties	Excellent
Certification	FloorScore® and Assure™ Certification
Country of Origin	Made in USA



**Accore - 0027**

## Warranty

**Limited 15-year Light Commercial Warranty**

### PROPRIETARY PRODUCT/MANUFACTURER

Proprietary Product: Accore Luxury Vinyl flooring is a rigid core construction engineered from the inside, out - and designed to outperform the extreme demands of today's hospitality environments. Suitable for light commercial hospitality environments such as guest rooms.

### INSTALLATION

See Accore installation instructions for complete details. Floating installations do not require any adhesives. For Glue Down installations, see below:

### ADHESIVES

Tarkett C-GU High Moisture Adhesive  
 Porous & Non-Porous Substrates: 125-150 sq. ft. per gallon

**avid Hotels: Public Areas Carpet**  
**Broadloom Carpet @ Corridor**  
**IHG SPEC NO: REP-CPT01**

#### Product Information

Style Number/Color	<b>B0614/172</b>
Product Type	<b>Broadloom</b>
Construction	<b>Multi-Level Pattern Cut/Loop</b>
Fiber	<b>CF Lextron Enviro-Green</b>
Dye Method	<b>Nylon 100 % Solution Dyed</b>
Primary Backing	<b>Woven Polypropylene</b>
Secondary Backing	<b>LX24 Cushion</b>

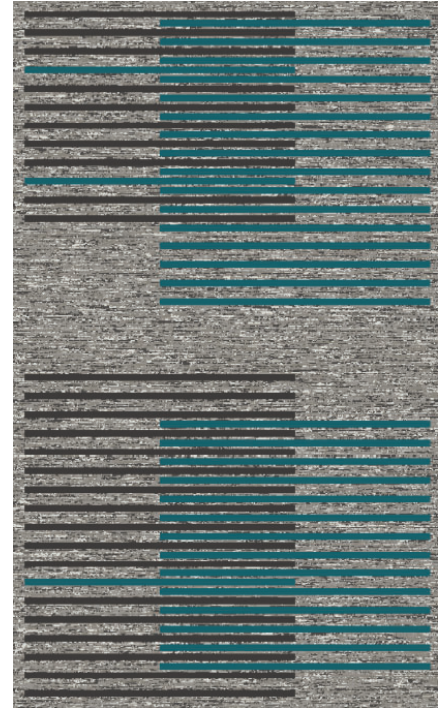
#### Specifications

Size	<b>12 ft Wide</b>
Gauge	<b>1/10</b>
Stitches per Inch	<b>10</b>
Tufted Weight	<b>30 oz per sq yd.</b>
Total Weight	<b>106 oz.</b>
Finished Pile Thickness	<b>.250 in.</b>
Total Thickness	<b>.375 in.</b>
Pattern Repeat	<b>Approx. 72 in. W x 121 in. L</b>

#### Performance

Traffic Class (TARR)	<b>Moderate</b>
Pill Test	<b>Pass</b>
Radiant Panel	<b>Class I</b>
Flammability	<b>ASTM E 648 Class I</b>
Smoke Density	<b>ASTM E 662 Less than 450</b>
LEED Info	<b>Green Label Plus Certified - GLP2380</b>

<b>Warranty</b>	<b>10 Year Limited Warranty</b>
-----------------	---------------------------------



Enviro-Green yarn has 10% pre-consumer recycled content.  
 Recommended for heavy (public space) carpet traffic levels.

Carpet should be installed in accordance with the Carpet and Rug Institute's standard CRI-104/CRI-105.  
 Pattern streaks and banding are visually apparent streaking in patterned carpet resulting from linear juxtaposition  
 of pattern elements visible in both length and width direction.  
 IT IS NOT A CARPET DEFECT, but is inherent in solution dyed graphic and cut/loop patterns.

All Specifications subject to normal manufacturing tolerance.

**avid Hotels: Public Areas Carpet**  
**Broadloom Carpet @ Corridor Door Drops & Transitions**  
**IHG SPEC NO: REP-CPT02**

#### Product Information

Style Number/Color	<b>B062/172</b>
Product Type	<b>Broadloom</b>
Construction	<b>Multi-Level Pattern Cut/Loop</b>
Fiber	<b>CF Lextron Enviro-Green</b>
Dye Method	<b>Nylon 100 % Solution Dyed</b>
Primary Backing	<b>Woven Polypropylene</b>
Secondary Backing	<b>LX24 Cushion</b>

#### Specifications

Size	<b>12 ft. Wide</b>
Gauge	<b>1/10</b>
Stitches per Inch	<b>10</b>
Tufted Weight	<b>30 oz per sq/yd</b>
Total Weight	<b>106 oz</b>
Finished Pile Thickness	<b>.250 in.</b>
Total Thickness	<b>.375 in.</b>
Pattern Repeat	<b>Approx. 36 in. W x 63 in. L</b>



#### Performance

Traffic Class	<b>Moderate</b>
(TARR) Pill Test	<b>Pass</b>
Radiant Panel	<b>Class I</b>
Flammability	<b>ASTM E 648 Class I</b>
Smoke Density	<b>ASTM E 662 Less than 450</b>
LEED Info	<b>Green Label Plus Certified - GLP2380</b>

<b>Warranty</b>	<b>10 Year Limited Warranty</b>
-----------------	---------------------------------

Enviro-Green yarn has 10% pre-consumer recycled content.  
 Recommended for heavy (public space) carpet traffic levels.

Carpet should be installed in accordance with the Carpet and Rug Institute's standard CRI-104/CRI-105.  
 Pattern streaks and banding are visually apparent streaking in patterned carpet resulting from linear juxtaposition of pattern elements visible in both length and width direction.  
 IT IS NOT A CARPET DEFECT, but is inherent in solution dyed graphic and cut/loop patterns.

All Specifications subject to normal manufacturing tolerance.

**avid Hotels: Public Areas Carpet**  
**Broadloom Carpet @ Elevator Lobby**  
**IHG SPEC NO: REP-CPT03**

#### Product Information

Style Number/Color	<b>B0612/172</b>
Product Type	<b>Broadloom</b>
Construction	<b>Multi-Level Pattern Cut/Loop</b>
Fiber	<b>CF Lextron Enviro-Green Nylon</b>
Dye Method	<b>100 % Solution Dyed</b>
Primary Backing	<b>Woven Polypropylene</b>
Secondary Backing	<b>LX24 Cushion</b>

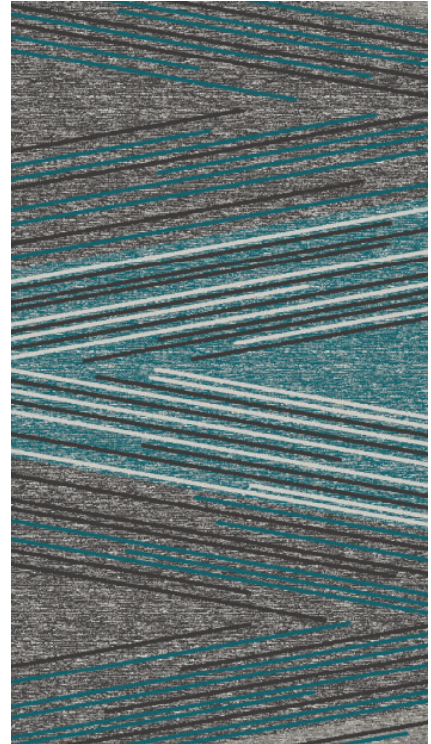
#### Specifications

Size	<b>12 ft Wide</b>
Gauge	<b>1/10</b>
Stitches per Inch	<b>10</b>
Tufted Weight	<b>30 oz per sq. yd.</b>
Total Weight	<b>106 oz.</b>
Finished Pile Thickness	<b>.250 in.</b>
Total Thickness	<b>.375 in.</b>
Pattern Repeat	<b>Approx. 144 in. W x 312 in. L</b>

#### Performance

Traffic Class (TARR)	<b>Moderate</b>
Pill Test	<b>Pass</b>
Radiant Panel	<b>Class I</b>
Flammability	<b>ASTM E 648 Class I</b>
Smoke Density	<b>ASTM E 662 Less than 450</b>
LEED Info	<b>Green Label Plus Certified - GLP2380</b>

<b>Warranty</b>	<b>10 Year Limited Warranty</b>
-----------------	---------------------------------



Enviro-Green yarn has 10% pre-consumer recycled content.  
 Recommended for heavy (public space) carpet traffic levels.

Carpet should be installed in accordance with the Carpet and Rug Institute's standard CRI-104/CRI-105.  
 Pattern streaks and banding are visually apparent streaking in patterned carpet resulting from linear juxtaposition of pattern elements visible in both length and width direction.  
 IT IS NOT A CARPET DEFECT, but is inherent in solution dyed graphic and cut/loop patterns.

All Specifications subject to normal manufacturing tolerance.

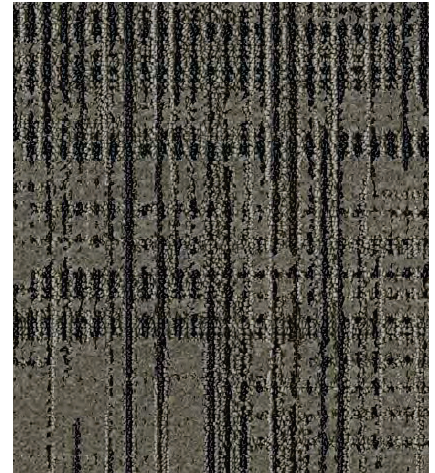
**avid Hotels: Public Areas Carpet**  
**Broadloom Carpet @Stairwells**  
**IHG SPEC NO: REP-CPT04**

### Product Information

Style Number/Color	<b>B0616/120</b>
Product Type	<b>Broadloom</b>
Construction	<b>Multi-Level Pattern Cut/Loop</b>
Fiber	<b>CF Lextron Enviro-Green</b>
Dye Method	<b>Nylon 100 % Solution Dyed</b>
Primary Backing	<b>Woven Polypropylene</b>
Secondary Backing	<b>Actionbac</b>

### Specifications

Size	<b>12 ft. Wide</b>
Gauge	<b>1/10</b>
Stitches per Inch	<b>10</b>
Tufted Weight	<b>32 oz per sq/yd</b>
Total Weight	<b>68 oz</b>
Finished Pile Thickness	<b>.250 in.</b>
Pattern Repeat	<b>Approx. 72 in. W x 131 in. L</b>



To be installed over carpet pad REP-CP01

### Performance

Traffic Class	<b>Moderate</b>
(TARR) Pill Test	<b>Pass</b>
Radiant Panel	<b>Class I</b>
Flammability	<b>ASTM E 648 Class I</b>
Smoke Density	<b>ASTM E 662 Less than 450</b>
LEED Info	<b>Green Label Plus Certified - GLP2380</b>

<b>Warranty</b>	<b>10 Year Limited Warranty</b>
-----------------	---------------------------------

Enviro-Green yarn has 10% pre-consumer recycled content.  
 Recommended for heavy (public space) carpet traffic levels.

Carpet should be installed in accordance with the Carpet and Rug Institute's standard CRI-104/CRI-105.  
 Pattern streaks and banding are visually apparent streaking in patterned carpet resulting from linear juxtaposition  
 of pattern elements visible in both length and width direction.  
 IT IS NOT A CARPET DEFECT, but is inherent in solution dyed graphic and cut/loop patterns.

All Specifications subject to normal manufacturing tolerance.

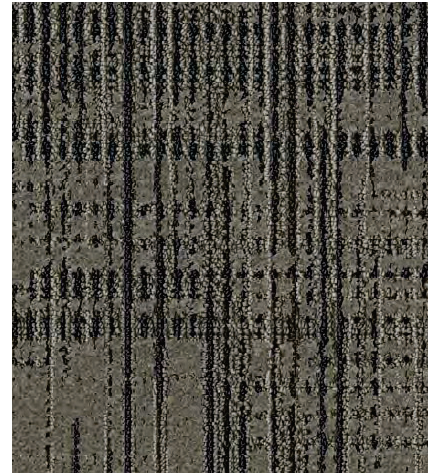
**avid Hotels: Public Areas Carpet**  
**Broadloom Carpet @BOH**  
**IHG SPEC NO: REP-CPT05**

#### Product Information

Style Number/Color	<b>B0618/120</b>
Product Type	<b>Broadloom</b>
Construction	<b>Multi-Level Pattern Cut/Loop</b>
Fiber	<b>CF Lextron Enviro-Green Nylon</b>
Dye Method	<b>100 % Solution Dyed</b>
Primary Backing	<b>Woven Polypropylene</b>
Secondary Backing	<b>Actionbac</b>

#### Specifications

Size	<b>12 ft. Wide</b>
Gauge	<b>1/10</b>
Stitches per Inch	<b>10</b>
Tufted Weight	<b>32 oz per sq/yd</b>
Total Weight	<b>68 oz</b>
Finished Pile Thickness	<b>.250 in.</b>
Pattern Repeat	<b>Approx. 72 in. W x 131 in. L</b>



To be installed over carpet pad REP-CP01

#### Performance

Traffic Class	<b>Moderate</b>
(TARR) Pill Test	<b>Pass</b>
Radiant Panel	<b>Class I</b>
Flammability	<b>ASTM E 648 Class I</b>
Smoke Density	<b>ASTM E 662 Less than 450</b>
LEED Info	<b>Green Label Plus Certified - GLP2380</b>

<b>Warranty</b>	<b>10 Year Limited Warranty</b>
-----------------	---------------------------------

Enviro-Green yarn has 10% pre-consumer recycled content.  
Recommended for heavy (public space) carpet traffic levels.

Carpet should be installed in accordance with the Carpet and Rug Institute's standard CRI-104/CRI-105.  
Pattern streaks and banding are visually apparent streaking in patterned carpet resulting from linear juxtaposition of pattern elements visible in both length and width direction.  
IT IS NOT A CARPET DEFECT, but is inherent in solution dyed graphic and cut/loop patterns.

All Specifications subject to normal manufacturing tolerance.

**avid Hotels: Public Areas Carpet**  
**Area Rug @ Lobby Lounge**  
**IHG SPEC NO: REP-RG01**

### Product Information

Style Number/Color	<b>B0628/321</b>
Product Type	Area Rug
Construction	Multi-Level Pattern Cut/Loop
Fiber Dye	CF Lextron Enviro-Green Nylon
Method	100% Solution Dyed
Primary Backing	Woven Polypropylene
Secondary Backing	Actionbac

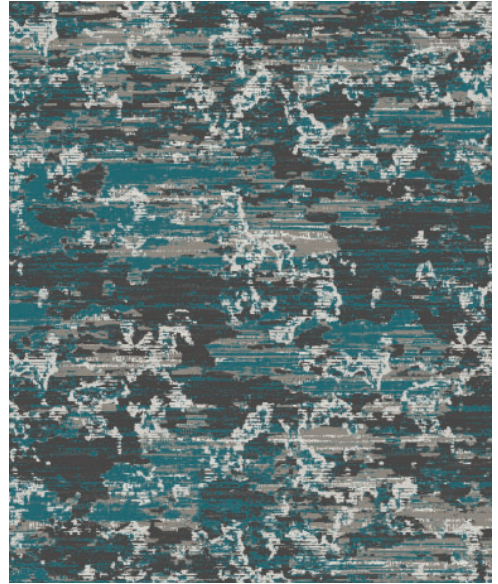
### Specifications

Size	12ft. Width/Rug Size 11'10" x 11'10"
Gauge	1/10
Stitches per Inch	8
Tufted Weight	30 oz per sq/yd
Total Weight Finished	106 oz
Pile Thickness	.250 in.
Total Thickness	.375 in.
Pattern Repeat	Approx. 72 in. W x 131 in. L

### Performance

Traffic Class (TARR)	Moderate
Pill Test	Pass
Radiant Panel	Class I
Flammability	ASTM E 648 Class I
Smoke Density	ASTM E 662 Less than 450
LEED Info	Green Label Plus Certified - GLP2380

**Warranty** 10 Year Limited Warranty



Binding color: 627  
 Carpet Pad REP-CP01 to be used under rug.

Enviro-Green yarn has 10% pre-consumer recycled content.

Recommended for heavy carpet traffic levels.

Carpet should be installed in accordance with the Carpet and Rug Institute's standard CRI-104/ CRI-105. Pattern streaks and banding are visually apparent streaking in patterned carpet resulting from linear juxtaposition of pattern elements visible in both length and width direction. IT IS NOT A CARPET DEFECT, but is inherent in solution dyed graphic and cut/loop patterns.

### Product Notes:

1. Specifications are subject to nominal manufacturing variances. Material supply and/or manufacturing processes may necessitate changes without notice.
2. Colors may vary slightly from dye lot to dye lot.
3. U.S. Patent numbers: 4,849,267; 6,406,574, US 9,988,760 B2
4. Chair pads are recommended for optimum textural performance. Absent the use of chair pads, more intensive maintenance will be required for areas in direct contact with chair caster traffic, and some degree of appearance change is to be expected.

**avid Hotels: Public Areas Carpet**  
**Area Rug @ Lobby**  
**IHG SPEC NO: REP-RG02**

### Product Information

Style Number/Color	<b>B0626/321</b>
Product Type	Area Rug
Construction	Multi-Level Pattern Cut/Loop
Fiber	CF Lextron Enviro-Green Nylon
Dye Method	100% Solution Dyed
Primary Backing	Woven Polypropylene
Secondary Backing	Actionbac

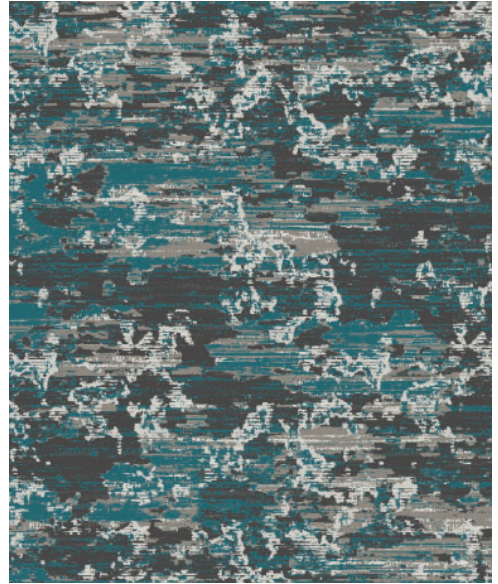
### Specifications

Size	12ft. Width/Rug Size 5' x 13'
Gauge	10
Stitches per Inch	1/10
Tufted Weight	30 oz per sq/yd
Total Weight	106 oz
Finished Pile Thickness	.250 in.
Total Thickness	.375 in. Approx.
Pattern Repeat	72 in. W x 131 in. L

### Performance

Traffic Class (TARR)	Moderate
Pill Test	Pass
Radiant Panel	Class I
Flammability	ASTM E 648 Class I
Smoke Density	ASTM E 662 Less than 450
LEED Info	Green Label Plus Certified - GLP2380

**Warranty** 10 Year Limited Warranty



Binding color: 627

Carpet Pad REP-CP01 to be used under rug.

Enviro-Green yarn has 10% pre-consumer recycled content.

Recommended for heavy carpet traffic levels.

Carpet should be installed in accordance with the Carpet and Rug Institute's standard CRI-104/  
 CRI-105. Pattern streaks and banding are visually apparent streaking in patterned carpet  
 resulting from linear juxtaposition of pattern elements visible in both length and width direction.  
 IT IS NOT A CARPET DEFECT, but is inherent in solution dyed graphic and cut/loop patterns.

### Product Notes:

1. Specifications are subject to nominal manufacturing variances. Material supply and/or manufacturing processes may necessitate changes without notice.
2. Colors may vary slightly from dye lot to dye lot.
3. U.S. Patent numbers: 4,849,267; 6,406,574, US 9,988,760 B2
4. Chair pads are recommended for optimum textural performance. Absent the use of chair pads, more intensive maintenance will be required for areas in direct contact with chair caster traffic, and some degree of appearance change is to be expected.

**avid Hotels: Public Areas Carpet Pad**  
**Carpet Pad @ BOH, Stair Landings & Lobby Rugs**  
**IHG SPEC NO: REP-CP01**

#### Product Information

Style Number/Color Product	<b>LPX32</b>
Type	<b>Carpet Pad</b>
Material Content	<b>100% Pre-Consumer Synthetic Fiber</b>
Construction	<b>Needle-punched &amp; Thermal-bonded</b>

#### Specifications

Size	<b>6'W x 60'L (40SY ROLLS)</b>
Density	<b>8.0 lbs/ cu. ft.</b>
Material Weight	<b>32 oz./ sq. yd.</b>
Total Thickness	<b>0.335"</b>
Color	<b>Gray</b>

#### Performance

Tensile Strength	<b>161.4 lbs</b>
Traffic Class	<b>Heavy</b>
FHA Class	<b>2</b>
Pill Test (DOC-FF 1-70)	<b>Pass</b>
Radiant Panel (ASTM E648)	<b>Class I</b>
Smoke Test (ASTM E662)	<b>&lt;450</b>
Thermal Insulation (R-Value)	<b>2.12</b>

<b>Indoor Air Quality</b>	<b>CRI Green Label Plus-certified</b>
---------------------------	---------------------------------------



**To be used with:**

- REP-CPT04 (LANDINGS ONLY)
- REP-CPT05 (BOH)
- REP-RG01 (LOBBY LOUNGE)
- REP-RG02 (LOBBY)

LPX32 is made from 100% pre-consumer synthetic fiber and will not support the growth of mold or mildew, and offers a quick and easy installation process. LPX32 has excellent thermal insulation and acoustical properties. LPX32 provides comfort underfoot and is less fatiguing than direct-glue-down installations. Contributes to LEED® credits. LEED points must be considered along with other building components and must be determined by the specifier/architect or LEED accredited representative.

LPX32 is designed for use in commercial and hospitality applications, including, but not limited to: guest rooms, meeting rooms, offices, dorm rooms, and retail space. LPX32 should be installed using conventional stretch-in installation only.

**avid Hotels: Resilient Wall Base**  
**Guestroom & Public Space Areas**

**Resilient Wall Base**

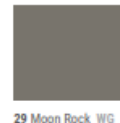
**IHG SPEC NO: REG-RB01 - Guest Room Area**

Style Number **MW-32-H**  
 Color **32 Pebble**  
 Product Type **Millwork Resilient Wall Base**  
 Size **4.5" H x 3/8" Thick x 8' L**  
 Carton Size **40 LF per Carton**



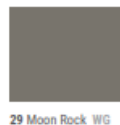
**IHG SPEC NO: REP-RB01 - Lobby**

Style Number **MW-29-H**  
 Color **29 Moon Rock**  
 Product Type **Millwork Resilient Wall Base**  
 Size **4.5" H x 3/8" Thick x 8' L**  
 Carton Size **40 LF per Carton**



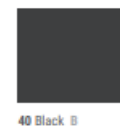
**IHG SPEC NO: REP-RB04 - Heart of House: Employee Breakroom, Employee Restroom, Housekeeping Laundry, Maintenance / Engineering, Mechanical Room, Storage**

Style Number **CB-29**  
 Color **29 Moon Rock**  
 Product Type **Millwork Resilient Wall Base**  
 Size **4" H x 1/8" Thick x 120' L**  
 Carton Size **120' Coil**



**IHG SPEC NO: REP-RB05 - Fitness Center**

Style Number **MW-40-H**  
 Color **40 Black**  
 Product Type **Millwork Resilient Wall Base**  
 Size **4.5" H x 3/8" Thick x 8' L**  
 Carton Size **40 LF per Carton**



**avid Hotels: Resilient Products  
Public Space Areas**

**Resilient Stair Nosing**

**IIHG SPEC NO: REP-RB02 - Stairwells**

Style Number      VCD-63  
Color                63 Burnt Umber (Use on Main Stair)  
Product Type      Vinyl Stair Nose  
Size                 12' L  
Carton Size        10 pieces per Carton

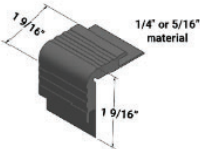
Style Number      VCD-VL2  
Color                VL2 Whispering Mist (Use on Top/Bottom Stair)  
Product Type      Vinyl Stair Nose  
Size                 12' L  
Carton Size        10 pieces per Carton



63 Burnt Umber B \*



VL2 Whispering Mist CB

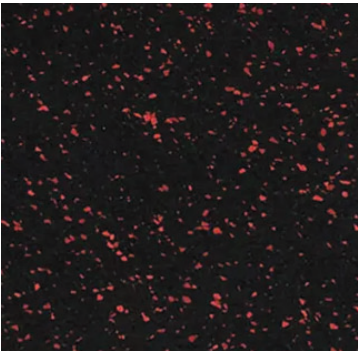


**VCD-XX**  
1/4" or 5/16" material  
on step and riser

**Rubber Sports Flooring**

**IIHG SPEC NO: REP-RF01- Fitness Center**

Style Number      COMR-RA2  
Color                RA2 Infrared  
Product Type      Recycled Composite Rubber  
Size                 48" W x 50'L Roll  
Roll Size            200 sf per Roll



# *Contact Us*

---

Contact: [IHG.Orders@tarkett.com](mailto:IHG.Orders@tarkett.com)

800-871-3211

## **Tarkett Hospitality**

285 Kraft Drive

Dalton, GA 30721

800.871.3211

[www.tarketthospitality.com](http://www.tarketthospitality.com)

© 2025 Tarkett Hospitality