



Spritz Scheme



© Tarkett Hospitality





























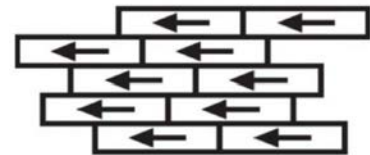


## Hilton Garden Inn - (B) Spritz Scheme Resilient Flooring

### Resilient Flooring Product Information

**Hilton Tag#** RF-01 ERT @ Guestroom (Optional)  
RF-11 ERT @ BOH

**Style Number** ACCRE-0016-7X48-VT  
**Color** Fumed Hickory 0016  
**Product Type** LVT/ERT - Enhanced Resilient Tile  
**Size** 7" W x 48" L  
**Carton Size** 23.64 sq ft per carton  
**Installation Pattern:** Stagger



**INSTALL: STAGGER**

### Hilton Tag# (B) VCT-10 VCT @ Public Area

**Style Number** VCT II  
**Color** 326 Dunes  
**Product Type** Vinyl Composition Tile  
**Size** 12" x 12" x 1/8" Thick  
**Carton Size** 45 sq ft per carton (45 tiles/carton)

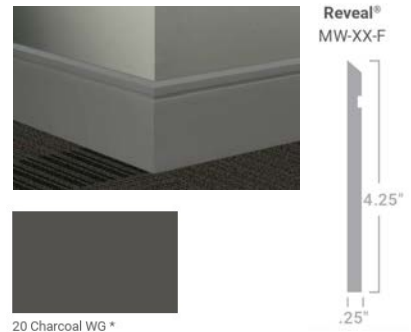


## Hilton Garden Inn - (A) Spritz Scheme Wall Base Options

### Resilient Wall Base Product Information

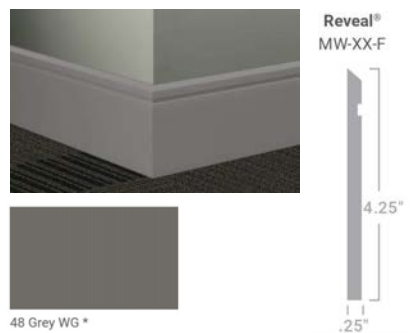
**Hilton Tag#** B-01 Resilient Base @ Guestroom  
B-10 Resilient Base @ Corridor

**Style Number** MW-20-F  
**Color** 20 Charcoal  
**Product Type** Reveal - Millwork Wall Base  
**Size** 4"-1/4"H x .250" Thick x 8 ft. Lengths  
**Carton Size** 64 ft per carton  
**Installation** Direct Glue



**Hilton Tag#** B-11 Resilient Base @ Fitness Area

**Style Number** MW-48-F  
**Color** 48 Grey  
**Product Type** Reveal - Millwork Wall Base  
**Size** 4"-1/4"H x .250" Thick x 8 ft. Lengths  
**Carton Size** 64 ft per carton  
**Installation** Direct Glue



### Carpet Base Product Information

**Hilton Tag#** B-01.ALT Carpet Base @ Guestroom  
B-10.ALT Carpet Base @ Corridor

**Style Number** 728S  
**Color** X482  
**Product Type** Cut pile bound carpet base  
**Size** 4"H x 12' Strips  
**Carton Size** N/A  
**Installation** Direct Glue



Enviro-Green yarn has 10% pre-consumer recycled content.   
Recommended for heavy (public space) carpet traffic levels.

**NOTE:** Due to the manufacturing process of a tip shear product, the finished yarn weight will vary more than normal manufacturing tolerances and side match cannot be guaranteed.

Carpet should be installed in accordance with the Carpet and Rug Institute's standard CRI-104.  
Carpet must be over manufacturer's recommended pad.

Pattern streaks and banding are visually apparent streaking in patterned carpet resulting from linear juxtaposition of pattern elements visible in both length and width direction.  
IT IS NOT A CARPET DEFECT, but is inherent in solution dyed graphic and cut/loop patterns.

All Specifications subject to normal manufacturing tolerance.



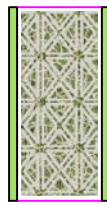
CP-01  
HG31B - 348  
13" WIDE BROADLOOM  
78" X 78" REPEAT  
GUESTROOMS



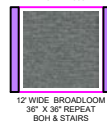
CP-10  
HG35B - 314  
12" WIDE BROADLOOM  
72" X 156" REPEAT  
CORRIDORS



CP-11  
HG39B - 314  
12" WIDE BROADLOOM  
72" X 73.65" REPEAT  
ELEVATOR LOBBIES



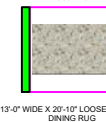
CP-12  
HG43B - 314  
12" WIDE BROADLOOM  
144" X 174" REPEAT  
MEETING



CP-13  
HG47B - 380  
12" WIDE BROADLOOM  
36" X 36" REPEAT  
BOH & STAIRS



PA-00  
HG51R - 314  
13'-6" DIAMETER LOOSE LAY RUG  
LOBBY RUG



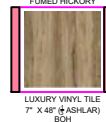
PA-01  
HG53R - 314  
13'-0" WIDE X 20'-11" LOOSE LAY RUG  
DINING RUG



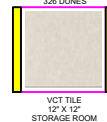
PA-02  
HG55R - 314  
10'-6" WIDE X 12'-0" LOOSE LAY RUG  
PREFUNCTION RUG



RF-01  
ACCORE  
FUMED HICKORY  
LUXURY VINYL TILE  
7" X 48" (#ASHLAR)  
GUESTROOM (OPTION)



RE-11  
ACCORE  
FUMED HICKORY  
LUXURY VINYL TILE  
7" X 48" (#ASHLAR)  
BOH



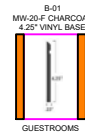
VCT-10  
VCT II  
328 DUNES  
VCT TILE  
12" X 12"  
STORAGE ROOM



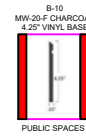
CP-50  
HG57R - 314  
12" WIDE BROADLOOM  
144" X 162.45" REPEAT  
LOBBY (RENOVATION)



CP-51  
HG59R - 314  
12" WIDE BROADLOOM  
144" X 174" REPEAT  
DINING & PREFUNCTION (RENOVATION)



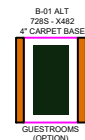
B-01  
MW-20-F CHARCOAL  
4.25" VINYL BASE  
GUESTROOMS



B-10  
MW-20-F CHARCOAL  
4.25" VINYL BASE  
PUBLIC SPACES



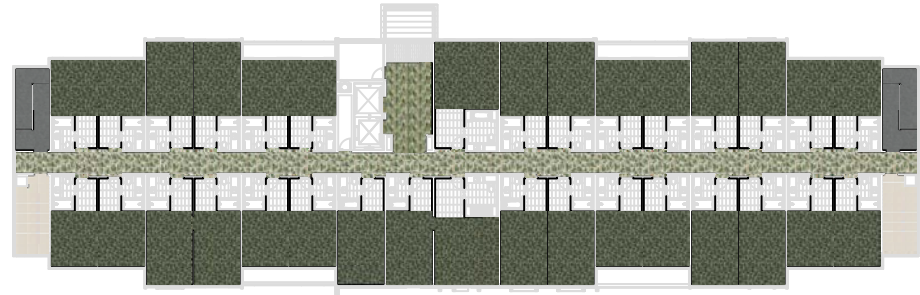
B-11  
MW-48-F GREY  
4.25" VINYL BASE  
FITNESS



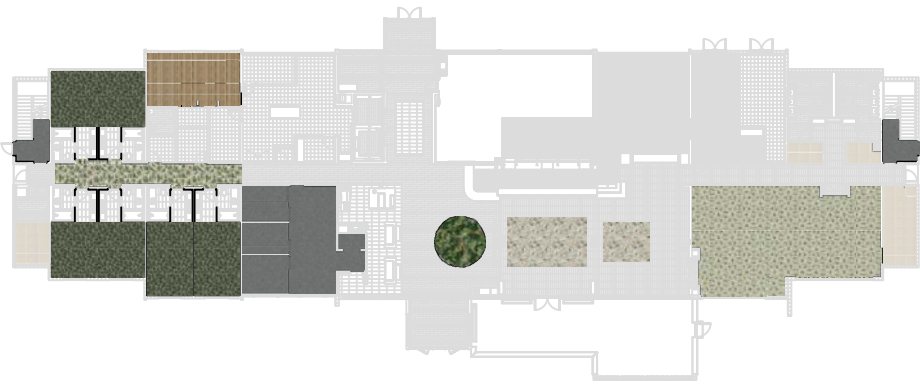
B-01 ALT  
728S - X482  
4" CARPET BASE  
GUESTROOMS  
(OPTION)



B-10 ALT  
728S - X482  
4" CARPET BASE  
PUBLIC SPACES  
(OPTION)



2ND - 5TH FLOOR PLAN  
2 TYPICAL FLOORS



1ST FLOOR PLAN

GENERAL NOTES

- 1) This drawing and designs contained therein are the sole property of Tarkett Hospitality Carpet Mills, Inc.
- 2) The red dotted lines indicate known seams. Due to mill sizes and unexpected conditions that may arise, adjustment seams may become necessary during installation. Locations of cross seams are approximate. Actual layout may vary based on roll sizes.
- 3) All contractors using this drawing will be responsible for verifying all dimensions and yardage requirements. Tarkett Hospitality Carpet Mills, Inc. will not be held responsible for final yardage requirements.
- 4) These drawings are used to show the interior design intent only and should not be used for construction purposes.
- 5) Patterned Products require experienced and knowledgeable installation technicians. Please ensure that installers have proper equipment and are familiar with Tarkett's Installation Guidelines. Please contact Technical Services for questions to request a copy of the Installation Guidelines.  
Doye Slaughter @ (706) 561-3554  
John Cox @ (706) 260-3054

Seam Lines are indicated by red dashed lines.  
This plan must be field verified for measurement accuracy.

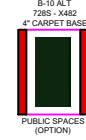
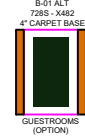
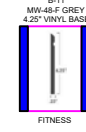
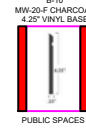
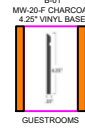
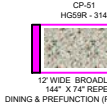
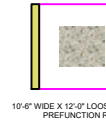
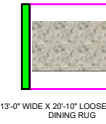
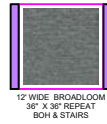
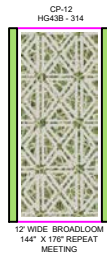
Rev. #	Description	Date

Approved By:  
Date:



TARKETT HOSPITALITY  
285 KRAFT DRIVE  
DALTON, GA. 30721  
(800) 871-3211

Project Name and Address  
HILTON GARDEN INN  
SPRITZ PROTOTYPE  
BROADLOOM



**GENERAL NOTES**

- 1) This drawing and designs contained therein are the sole property of Tarkett Hospitality Carpet Mills, Inc.
- 2) The red dotted lines indicate known seams. Due to roll sizes and unexpected conditions that may arise, adjustment seams may become necessary during installation. Locations of cross seams are approximate. Actual layout may vary based on roll sizes.
- 3) All contractors using this drawing will be responsible for verifying all dimensions and yardage requirements. Tarkett Hospitality Carpet Mills, Inc. will not be held responsible for final yardage requirements.
- 4) These drawings are used to show the interior design intent only and should not be used for construction purposes.
- 5) Patterned Products require experienced and knowledgeable installation technicians. Please ensure that installers have proper equipment and are familiar with Tarkett's Installation Guidelines. Please contact Technical Services for questions to request a copy of the Installation Guidelines. Doye Slaughter @ (706) 661-3354 John Cox @ (706) 260-3054

Seam Lines are indicated by red dashed lines.  
 This plan must be field verified for measurement accuracy.

Rev. #	Description	Date

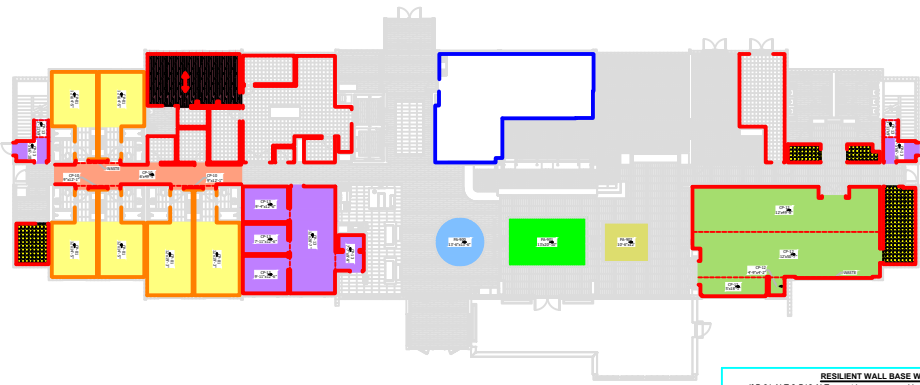
Approved By: \_\_\_\_\_  
 Date: \_\_\_\_\_



2ND - 8TH FLOOR PLAN  
 2 TYPICAL FLOORS

**RESILIENT WALL BASE WITH CARPET BASE OPTION**  
 If B-01 ALT carpet base is used in guestrooms it is to be used in carpeted areas only. B-01 to be used in entries.

**RESILIENT WALL BASE WITH CARPET BASE OPTION**  
 If B-01 ALT & B10 ALT carpet bases are used in guestrooms & public spaces they are to be used in carpeted areas only. B-01 & B-10 to be used at hard surfaces.



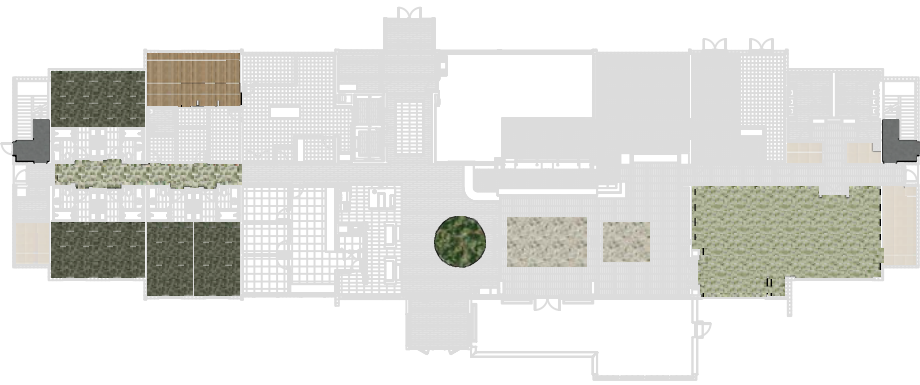
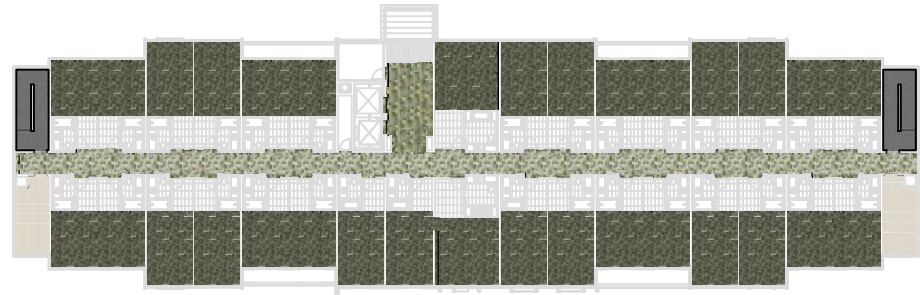
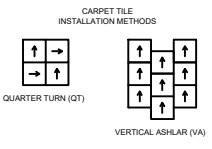
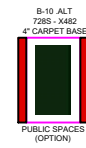
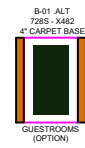
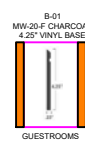
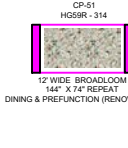
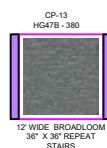
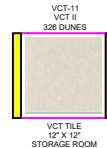
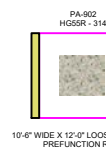
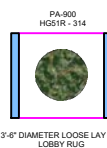
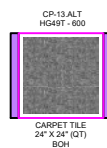
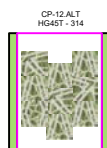
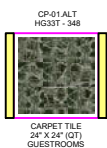
1ST FLOOR PLAN

**RESILIENT WALL BASE WITH CARPET BASE OPTION**  
 If B-01 ALT & B10 ALT carpet bases are used in guestrooms & public spaces they are to be used in carpeted areas only. B-01 & B-10 to be used at hard surfaces.



**TARKETT HOSPITALITY**  
 285 KRAFT DRIVE  
 DALTON, GA. 30721  
 (800) 871-3211

Project Name and Address  
**HILTON GARDEN INN**  
 SPRITZ PROTOTYPE  
 BROADLOOM



**GENERAL NOTES**

- 1) This drawing and designs contained therein are the sole property of Tarkett Hospitality Carpet Mills, Inc.
- 2) The red dotted lines indicate known seams. Due to mill sizes and unexpected conditions that may arise, adjustment seams may become necessary during installation. Locations of cross seams are approximate. Actual layout may vary based on roll sizes.
- 3) All contractors using this drawing will be responsible for verifying all dimensions and yardage requirements. Tarkett Hospitality Carpet Mills, Inc. will not be held responsible for final yardage requirements.
- 4) These drawings are used to show the interior design intent only and should not be used for construction purposes.
- 5) Patterned Products require experienced and knowledgeable installation technicians. Please ensure that installers have proper equipment and are familiar with Tarkett's Installation Guidelines. Please contact Technical Services for questions to request a copy of the Installation Guidelines.  
Doye Daughler @ (706) 561-3554  
John Cox @ (706) 260-3054

Seam Lines are indicated by red dashed lines.  
This plan must be field verified for measurement accuracy.

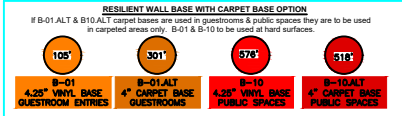
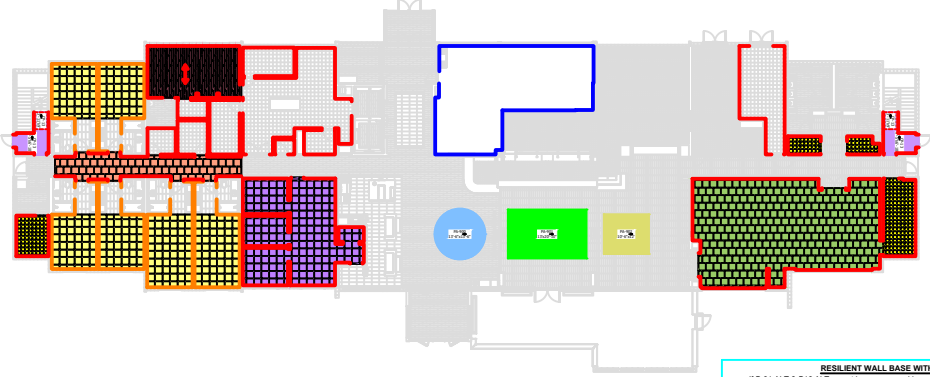
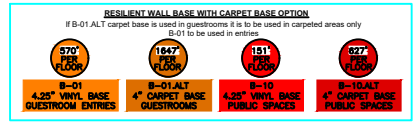
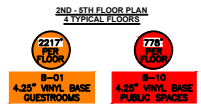
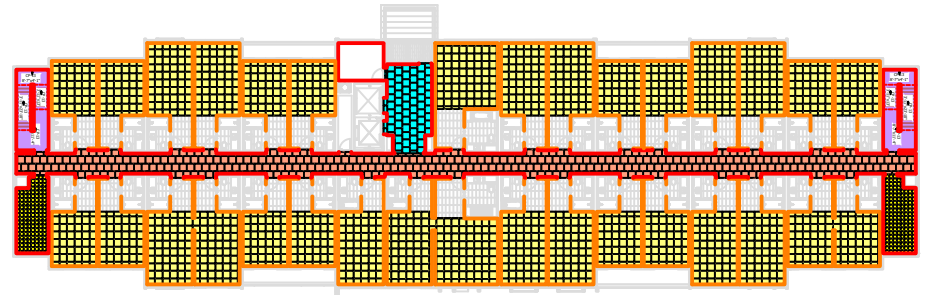
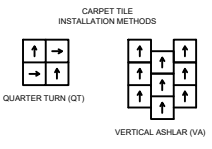
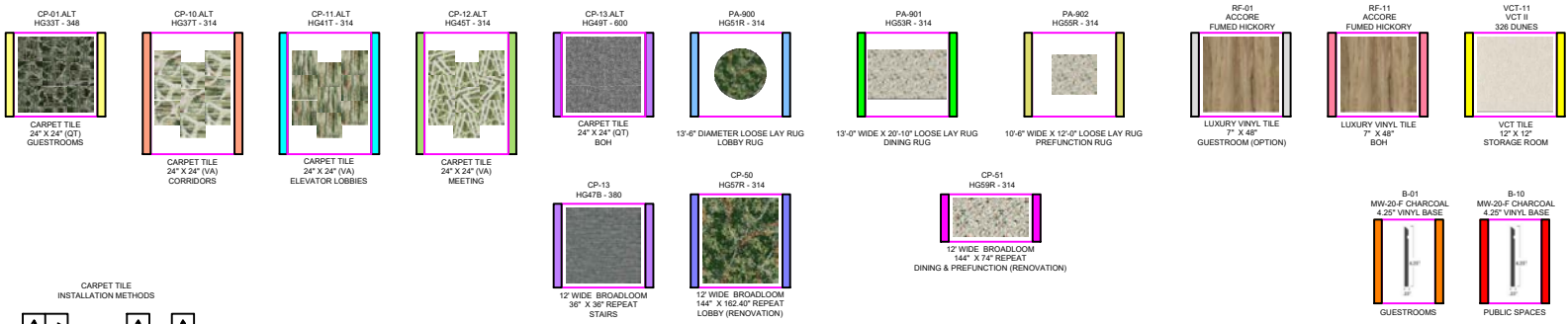
Rev. #	Description	Date

Approved By:  
Date:



**TARKETT HOSPITALITY**  
285 KRAFT DRIVE  
DALTON, GA. 30721  
(800) 871-3211

**Project Name and Address**  
HILTON GARDEN INN  
SPRITZ PROTOTYPE  
CARPET TILE



**GENERAL NOTES**

- 1) This drawing and designs contained therein are the sole property of Tarkett Hospitality Carpet Mills, Inc.
- 2) The red dotted lines indicate known seams. Due to mill sizes and unexpected conditions that may arise, adjustment seams may become necessary during installation. Locations of cross seams are approximate. Actual layout may vary based on roll sizes.
- 3) All contractors using this drawing will be responsible for verifying all dimensions and yardage requirements. Tarkett Hospitality Carpet Mills, Inc. will not be held responsible for final yardage requirements.
- 4) These drawings are used to show the interior design intent only and should not be used for construction purposes.
- 5) Patterned Products require experienced and knowledgeable installation technicians. Please ensure that installers have proper equipment and are familiar with Tarkett's Installation Guidelines. Please contact Technical Services for questions to request a copy of the Installation Guidelines.  
Doye Daughler @ (706) 661-3354  
John Cox @ (706) 260-3054

Seam Lines are indicated by red dashed lines.  
This plan must be field verified for measurement accuracy.

Rev. #	Description	Date

Approved By:  
Date:



**TARKETT HOSPITALITY**  
285 KRAFT DRIVE  
DALTON, GA. 30721  
(800) 871-3211

**Project Name and Address**  
HILTON GARDEN INN  
SPRITZ PROTOTYPE  
CARPET TILE

# Every step matters

Sustainability

*Every Step Matters. Tarkett's holistic approach to sustainability is woven into the fabric of how we do business and sits at the heart of our day-to-day decision making. For decades, we've scrutinized every detail of our business for its impact on resources such as soil, water, air, and climate—because when you're trailblazing a more sustainable future, every step matters.*

**Corporate Transparency** is fundamental to our values and the way we do business. Third-party assessments serve as a testament to our performance, earning the trust of customers and partners.



#### **EcoVadis**

Tarkett is proud to have been awarded a Platinum sustainability rating by EcoVadis with a score of 81/100, which places us in the top 1% of rated companies. EcoVadis assesses CSR policies, actions, and results across four themes and 21 CSR criteria: environment, labor and human rights, ethics, and sustainable procurement.



#### **Carbon Disclosure Project (CDP)**

Tarkett's "A" score for climate change impact positions us at the leadership level of CDP's grading system.



DRIVING AMBITIOUS CORPORATE CLIMATE ACTION

#### **Science Based Targets Initiative**

Tarkett's 2030 carbon reduction targets are approved by the Science Based Targets initiative (SBTi). We have two 2030 targets guiding nearly every sustainability initiative at Tarkett:

1. Reduce carbon emissions by 30% across Scopes 1, 2, and 3.
2. Increase recycled content in our products from 18% in 2019 to 30% by 2030.



**Start your next project with ReStart®**

We're committed to creating a circular economy where nothing goes to waste. Take part by starting your next project with Tarkett's ReStart® flooring take-back and recycling program. The ReStart program will accept any type of flooring from any manufacturer. Join us as we innovate and collaborate towards a healthier future for this generation and generations to come.

# Contact Us

---

Firstname Lastname

Title Goes Here

HiltonOrders@tarkett.com

800-871-3211



**Tarkett Hospitality**  
285 Kraft Drive  
Dalton, GA 30721  
800.871.3211  
[www.tarketthospitality.com](http://www.tarketthospitality.com)