



Version 3.0

TEMPO
by Hilton™

© **Tarkett Hospitality**

Tempo by Hilton - Public Space
Corridor Broadloom
CP-10

1 repeat shown- not to scale

Product Information

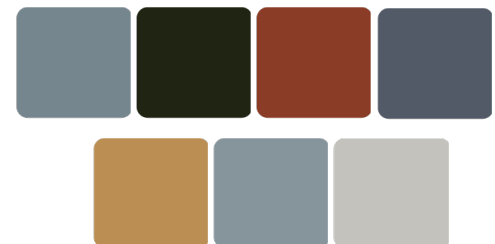
Product Type	Broadloom
Style / Color Number	HT10B / 458
Construction	Multi-Level Pattern Cut/Loop
Fiber	Lextron Enviro-Green Nylon
Dye Method	100 % Solution Dyed
Primary Backing	Woven Polypropylene
Secondary Backing	Unitary


Specifications

Size	12'
Gauge	1/10
Stitches per Inch	8
Tufted Weight	36oz per sq/yd
Finished Pile Thickness	.248 inches average
Pattern Repeat	72" x 180.57"
Total Overall Thickness	.441 inches average

Performance

Traffic Class (TARR)	Heavy
Pill Test	Pass
Radiant Panel	Class I
Flammability	ASTM E 648 Class I
Smoke Density	ASTM E 662 Less than 450
LEED Info	Green Label Plus Certified – GLP2380
Warranty	10 Year Limited Warranty



Enviro-Green yarn has 10% pre-consumer recycled content. 
Recommended for heavy (public space) carpet traffic levels.

NOTE: Due to the manufacturing process of a tip shear product, the finished yarn weight will vary more than normal manufacturing tolerances and side match cannot be guaranteed.

Carpet should be installed in accordance with the Carpet and Rug Institute's standard CRI-104.
Carpet must be over manufacturer's recommended pad.

Pattern streaks and banding are visually apparent streaking in patterned carpet resulting from linear juxtaposition of pattern elements visible in both length and width direction.

IT IS NOT A CARPET DEFECT, but is inherent in solution dyed graphic and cut/loop patterns.

All Specifications subject to normal manufacturing tolerance.

**Tempo by Hilton - Public Space
BOH & Stairwell Broadloom
CP-11**

1 repeat shown- not to scale

Product Information

Product Type	Broadloom
Style / Color Number	HT01B / 609
Construction	Multi-Level Pattern Cut/Loop
Fiber	Lextron Enviro-Green Nylon
Dye Method	100 % Solution Dyed
Primary Backing	Woven Polypropylene
Secondary Backing	Action Bac


Specifications

Size	12'
Gauge	1/10
Stitches per Inch	10
Tufted Weight	32 oz per sq/yd
Finished Pile Thickness	.246 inches average
Pattern Repeat	48" x 30"
Total Overall Thickness	.352 inches average



Performance

Traffic Class (TARR)	Heavy
Pill Test	Pass
Radiant Panel	Class I
Flammability	ASTM E 648 Class I
Smoke Density	ASTM E 662 Less than 450
LEED Info	Green Label Plus Certified – GLP2380
Warranty	10 Year Limited Warranty

Enviro-Green yarn has 10% pre-consumer recycled content. 
Recommended for heavy (public space) carpet traffic levels.

NOTE: Due to the manufacturing process of a tip shear product, the finished yarn weight will vary more than normal manufacturing tolerances and side match cannot be guaranteed.

Carpet should be installed in accordance with the Carpet and Rug Institute's standard CRI-104.
 Carpet must be over manufacturer's recommended pad.

Pattern streaks and banding are visually apparent streaking in patterned carpet resulting from linear juxtaposition of pattern elements visible in both length and width direction.
IT IS NOT A CARPET DEFECT, but is inherent in solution dyed graphic and cut/loop patterns.

All Specifications subject to normal manufacturing tolerance.

Tempo by Hilton - Public Space
Vignette A - Area Rug
PA-900

Product Information

Product Type	Lobby Area - Area Rug
Style / Color Number	HT02R / 456
Construction	Multi-Level Pattern Cut/Loop
Fiber	Lextron Enviro-Green Nylon
Dye Method	100 % Solution Dyed
Primary Backing	Woven Polypropylene
Secondary Backing	Non-Skid

Specifications


Size	11' x 14'
Gauge	1/10
Stitches per Inch	7
Tufted Weight	36oz per sq/yd
Finished Pile Thickness	.248 inches average
Pattern Repeat	144" x 168"
Total Overall Thickness	.441inches average
Edge Treatment	Serged Binding - Color 3005

Rugs to be randomly cut



Performance

Traffic Class (TARR)	Heavy
Pill Test	Pass
Radiant Panel	Class I
Flammability	ASTM E 648 Class I
Smoke Density	ASTM E 662 Less than 450
LEED Info	Green Label Plus Certified – GLP2380
Warranty	10 Year Limited Warranty

Enviro-Green yarn has 10% pre-consumer recycled content. 
Recommended for heavy (public space) carpet traffic levels.

NOTE: Due to the manufacturing process of a tip shear product, the finished yarn weight will vary more than normal manufacturing tolerances and side match cannot be guaranteed.

Carpet should be installed in accordance with the Carpet and Rug Institute's standard CRI-104. Carpet must be over manufacturer's recommended pad.

Pattern streaks and banding are visually apparent streaking in patterned carpet resulting from linear juxtaposition of pattern elements visible in both length and width direction.

IT IS NOT A CARPET DEFECT, but is inherent in solution dyed graphic and cut/loop patterns.

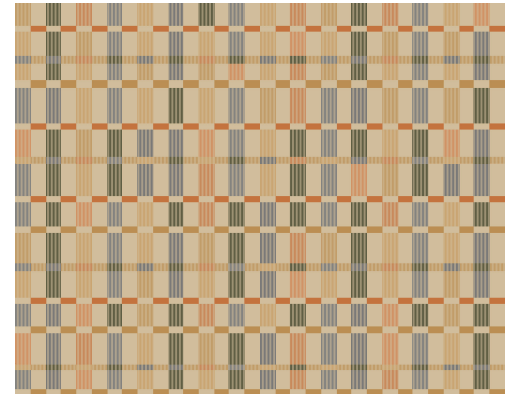
All Specifications subject to normal manufacturing tolerance.

Tempo by Hilton - Public Space
Vignette B - Area Rug
PA-901

Product Information

Product Type	Lobby Area - Area Rug
Style / Color Number	HT03R / 456
Construction	Multi-Level Pattern Cut/Loop
Fiber	Lextron Enviro-Green Nylon
Dye Method	100 % Solution Dyed
Primary Backing	Woven Polypropylene
Secondary Backing	Non-Skid

Rugs to be randomly cut




Specifications

Size	9' x 12'
Gauge	1/10
Stitches per Inch	8
Tufted Weight	36oz per sq/yd
Finished Pile Thickness	.248 inches average
Pattern Repeat	144" x 168"
Total Overall Thickness	.441 inches average
Edge Treatment	Serged Binding - Color X333



Performance

Traffic Class (TARR)	Heavy
Pill Test	Pass
Radiant Panel	Class I
Flammability	ASTM E 648 Class I
Smoke Density	ASTM E 662 Less than 450
LEED Info	Green Label Plus Certified – GLP2380
Warranty	10 Year Limited Warranty

Enviro-Green yarn has 10% pre-consumer recycled content. 
Recommended for heavy (public space) carpet traffic levels.

NOTE: Due to the manufacturing process of a tip shear product, the finished yarn weight will vary more than normal manufacturing tolerances and side match cannot be guaranteed.

Carpet should be installed in accordance with the Carpet and Rug Institute's standard CRI-104.
 Carpet must be over manufacturer's recommended pad.

Pattern streaks and banding are visually apparent streaking in patterned carpet resulting from linear juxtaposition of pattern elements visible in both length and width direction.

IT IS NOT A CARPET DEFECT, but is inherent in solution dyed graphic and cut/loop patterns.

All Specifications subject to normal manufacturing tolerance.

Tempo by Hilton - Public Space

Vignette D - Area Rug

PA-902

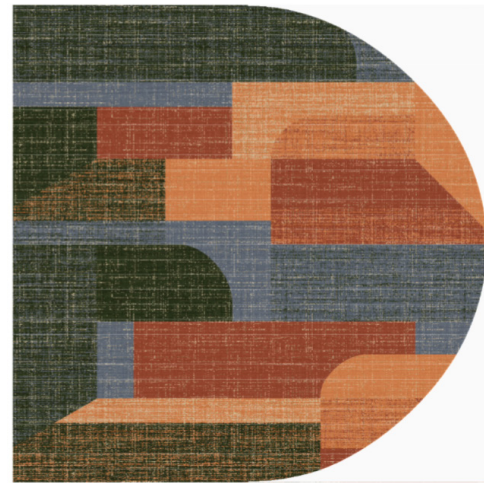
Product Information

Product Type	Lobby Area - Area Rug
Style / Color Number	HT04R / 456
Construction	Multi-Level Pattern Cut/Loop
Fiber	Lextron Enviro-Green Nylon
Dye Method	100 % Solution Dyed
Primary Backing	Woven Polypropylene
Secondary Backing	Non-Skid

Specifications


Size	12' x 12' Cathedral
Gauge	1/10
Stitches per Inch	7
Tufted Weight	36oz per sq/yd
Finished Pile Thickness	.248 inches average
Pattern Repeat	144" x 168"
Total Overall Thickness	.441 inches average
Edge Treatment	Serged Binding - Color X427

Rugs to be critical match from pattern



Performance

Traffic Class (TARR)	Heavy
Pill Test	Pass
Radiant Panel	Class I
Flammability	ASTM E 648 Class I
Smoke Density	ASTM E 662 Less than 450
LEED Info	Green Label Plus Certified – GLP2380
Warranty	10 Year Limited Warranty

Enviro-Green yarn has 10% pre-consumer recycled content. 
 Recommended for heavy (public space) carpet traffic levels.

NOTE: Due to the manufacturing process of a tip shear product, the finished yarn weight will vary more than normal manufacturing tolerances and side match cannot be guaranteed.

Carpet should be installed in accordance with the Carpet and Rug Institute's standard CRI-104. Carpet must be over manufacturer's recommended pad.

Pattern streaks and banding are visually apparent streaking in patterned carpet resulting from linear juxtaposition of pattern elements visible in both length and width direction.

IT IS NOT A CARPET DEFECT, but is inherent in solution dyed graphic and cut/loop patterns.

All Specifications subject to normal manufacturing tolerance.

Tempo by Hilton - Public Space
Vignette E- Area Rug
PA-903

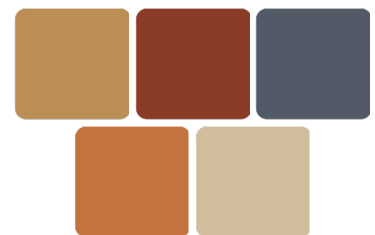
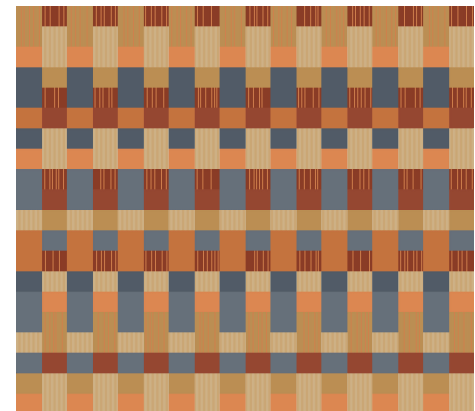
Product Information

Product Type	Lobby Area - Area Rug
Style / Color Number	HT05R / 456
Construction	Multi-Level Pattern Cut/Loop
Fiber	Lextron Enviro-Green Nylon
Dye Method	100 % Solution Dyed
Primary Backing	Woven Polypropylene
Secondary Backing	Non-Skid

Specifications


Size	7'-8" x 12'-6"
Gauge	1/10
Stitches per Inch	7
Tufted Weight	36oz per sq/yd
Finished Pile Thickness	.248 inches average
Pattern Repeat	144" x 168"
Total Overall Thickness	.441 inches average
Edge Treatment	Serged Binding - Color X333

Rugs to be randomly cut



Performance

Traffic Class (TARR)	Heavy
Pill Test	Pass
Radiant Panel	Class I
Flammability	ASTM E 648 Class I
Smoke Density	ASTM E 662 Less than 450
LEED Info	Green Label Plus Certified – GLP2380
Warranty	10 Year Limited Warranty

Enviro-Green yarn has 10% pre-consumer recycled content. 
 Recommended for heavy (public space) carpet traffic levels.

NOTE: Due to the manufacturing process of a tip shear product, the finished yarn weight will vary more than normal manufacturing tolerances and side match cannot be guaranteed.

Carpet should be installed in accordance with the Carpet and Rug Institute's standard CRI-104. Carpet must be over manufacturer's recommended pad.

Pattern streaks and banding are visually apparent streaking in patterned carpet resulting from linear juxtaposition of pattern elements visible in both length and width direction.

IT IS NOT A CARPET DEFECT, but is inherent in solution dyed graphic and cut/loop patterns.

All Specifications subject to normal manufacturing tolerance.

Tempo by Hilton - Public Space
Informal Lounge Plush Sofa - Area Rug
PA-904

Product Information

Product Type	Lobby Area - Area Rug
Style / Color Number	HT06R / 456
Construction	Multi-Level Pattern Cut/Loop
Fiber	Lextron Enviro-Green Nylon
Dye Method	100 % Solution Dyed
Primary Backing	Woven Polypropylene
Secondary Backing	Non-Skid

Specifications

Size	10'-9" x 8'
Gauge	1/10
Stitches per Inch	7
Tufted Weight	36oz per sq/yd
Finished Pile Thickness	.248 inches average
Pattern Repeat	144" x 168"
Total Overall Thickness	.441 inches average
Edge Treatment	Serged Binding - Color X333


Rugs to be randomly cut



Performance

Traffic Class (TARR)	Heavy
Pill Test	Pass
Radiant Panel	Class I
Flammability	ASTM E 648 Class I
Smoke Density	ASTM E 662 Less than 450
LEED Info	Green Label Plus Certified – GLP2380
Warranty	10 Year Limited Warranty



Enviro-Green yarn has 10% pre-consumer recycled content. 
Recommended for heavy (public space) carpet traffic levels.

NOTE: Due to the manufacturing process of a tip shear product, the finished yarn weight will vary more than normal manufacturing tolerances and side match cannot be guaranteed.

Carpet should be installed in accordance with the Carpet and Rug Institute's standard CRI-104.
 Carpet must be over manufacturer's recommended pad.

Pattern streaks and banding are visually apparent streaking in patterned carpet resulting from linear juxtaposition of pattern elements visible in both length and width direction.

IT IS NOT A CARPET DEFECT, but is inherent in solution dyed graphic and cut/loop patterns.

All Specifications subject to normal manufacturing tolerance.

Tempo by Hilton - Public Space
Informal Lounge Tailored Sofa - Area Rug
PA-905

Product Information

Product Type	Lobby Area - Area Rug
Style / Color Number	HT07R / 456
Construction	Multi-Level Pattern Cut/Loop
Fiber	Lextron Enviro-Green Nylon
Dye Method	100 % Solution Dyed
Primary Backing	Woven Polypropylene
Secondary Backing	Non-Skid

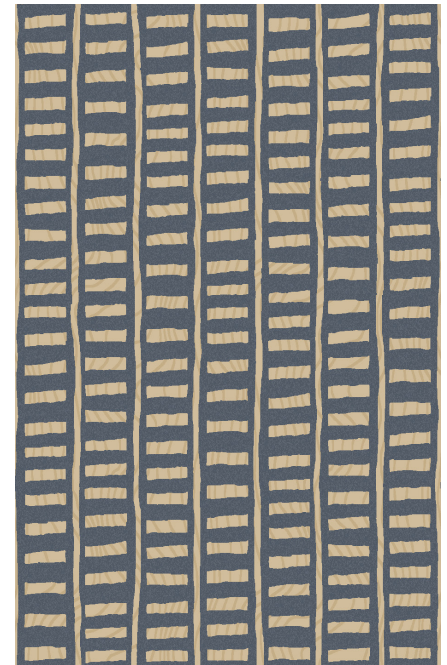
Specifications


Size	10'-9" x 8'
Gauge	1/10
Stitches per Inch	7
Tufted Weight	36oz per sq/yd
Finished Pile Thickness	.248 inches average
Pattern Repeat	144" x 132"
Total Overall Thickness	.441 inches average
Edge Treatment	Serged Binding - Color X427

Performance

Traffic Class (TARR)	Heavy
Pill Test	Pass
Radiant Panel	Class I
Flammability	ASTM E 648 Class I
Smoke Density	ASTM E 662 Less than 450
LEED Info	Green Label Plus Certified – GLP2380
Warranty	10 Year Limited Warranty

Rugs to be randomly cut



Enviro-Green yarn has 10% pre-consumer recycled content. 
Recommended for heavy (public space) carpet traffic levels.

NOTE: Due to the manufacturing process of a tip shear product, the finished yarn weight will vary more than normal manufacturing tolerances and side match cannot be guaranteed.

Carpet should be installed in accordance with the Carpet and Rug Institute's standard CRI-104. Carpet must be over manufacturer's recommended pad.

Pattern streaks and banding are visually apparent streaking in patterned carpet resulting from linear juxtaposition of pattern elements visible in both length and width direction.

IT IS NOT A CARPET DEFECT, but is inherent in solution dyed graphic and cut/loop patterns.

All Specifications subject to normal manufacturing tolerance.

Tempo by Hilton - Public Space
Informal Meeting Room - Area Rug
PA-906

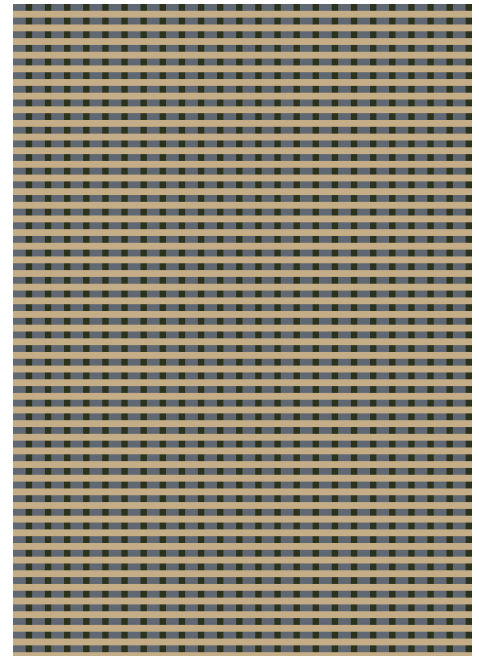
Product Information

Product Type	Lobby Area - Area Rug
Style / Color Number	HT08R / 456
Construction	Multi-Level Pattern Cut/Loop
Fiber	Lextron Enviro-Green Nylon
Dye Method	100 % Solution Dyed
Primary Backing	Woven Polypropylene
Secondary Backing	Non-Skid

Specifications


Size	8'-6" x 22'-6"
Gauge	1/10
Stitches per Inch	7
Tufted Weight	36oz per sq/yd
Finished Pile Thickness	.248 inches average
Pattern Repeat	144" x 144"
Total Overall Thickness	.441 inches average
Edge Treatment	Serged Binding - Color X333

Rugs to be randomly cut



Performance

Traffic Class (TARR)	Heavy
Pill Test	Pass
Radiant Panel	Class I
Flammability	ASTM E 648 Class I
Smoke Density	ASTM E 662 Less than 450
LEED Info	Green Label Plus Certified – GLP2380
Warranty	10 Year Limited Warranty

Enviro-Green yarn has 10% pre-consumer recycled content. 
Recommended for heavy (public space) carpet traffic levels.

NOTE: Due to the manufacturing process of a tip shear product, the finished yarn weight will vary more than normal manufacturing tolerances and side match cannot be guaranteed.

Carpet should be installed in accordance with the Carpet and Rug Institute's standard CRI-104.
 Carpet must be over manufacturer's recommended pad.

Pattern streaks and banding are visually apparent streaking in patterned carpet resulting from linear juxtaposition of pattern elements visible in both length and width direction.

IT IS NOT A CARPET DEFECT, but is inherent in solution dyed graphic and cut/loop patterns.

All Specifications subject to normal manufacturing tolerance.

Tempo by Hilton - Public Space
Upper Floor Elevator Lobby - Area Rug
PA-907

Product Information

Product Type	Lobby Area - Area Rug
Style / Color Number	HT09R / 456
Construction	Multi-Level Pattern Cut/Loop
Fiber	Lextron Enviro-Green Nylon
Dye Method	100 % Solution Dyed
Primary Backing	Woven Polypropylene
Secondary Backing	Non-Skid

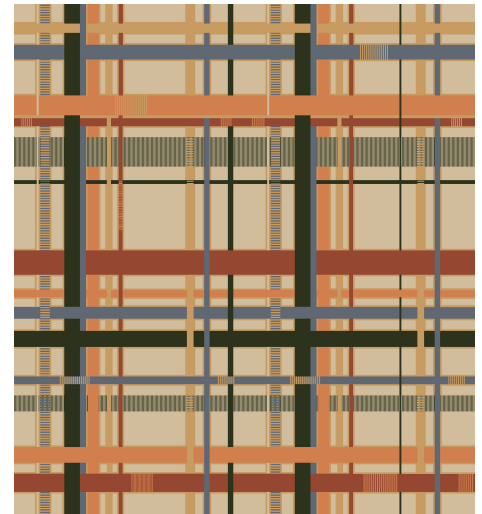
Specifications


Size	7'x 14'-8"
Gauge	1/10
Stitches per Inch	9
Tufted Weight	36oz per sq/yd
Finished Pile Thickness	.248 inches average
Pattern Repeat	144" x 177.14"
Total Overall Thickness	.441 inches average
Edge Treatment	Serged Binding - Color X333

Performance

Traffic Class (TARR)	Heavy
Pill Test	Pass
Radiant Panel	Class I
Flammability	ASTM E 648 Class I
Smoke Density	ASTM E 662 Less than 450
LEED Info	Green Label Plus Certified – GLP2380
Warranty	10 Year Limited Warranty

Rugs to be randomly cut



Enviro-Green yarn has 10% pre-consumer recycled content. 
Recommended for heavy (public space) carpet traffic levels.

NOTE: Due to the manufacturing process of a tip shear product, the finished yarn weight will vary more than normal manufacturing tolerances and side match cannot be guaranteed.

Carpet should be installed in accordance with the Carpet and Rug Institute's standard CRI-104.
 Carpet must be over manufacturer's recommended pad.

Pattern streaks and banding are visually apparent streaking in patterned carpet resulting from linear juxtaposition of pattern elements visible in both length and width direction.

IT IS NOT A CARPET DEFECT, but is inherent in solution dyed graphic and cut/loop patterns.

All Specifications subject to normal manufacturing tolerance.

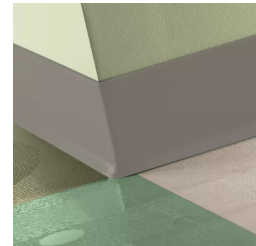
Tempo by Hilton - Public Space Resilient Wall Base

Hilton Tag# B-11 Resilient Base @ Stairwell & BOH

Style Number **CB-TA8**
 Color **TA8 Welsh Castle**
 Product Type **Vinyl Wall Base**
 Size **4" H x 1/8" thick x 120' L**
 Carton Size **120LF per Carton**



TA8 Welsh Castle CB



Hilton Tag # B-12 Resilient Base @ Fitness

Style Number **MW-40-FS**
 Color **40 Black**
 Product Type **Millwork Wall Base - Exhibit Profile**
 Size **4.25" H x .25" thick x 8' L**
 Carton Size **64 LF per Carton**



40 Black B



Hilton Tag #B-16 - Resilient Base @ Guestroom Corridors & Elevator Lobby

Style Number **MW-TA2-X63**
 Color **TA2 Saddlebrook**
 Product Type **Millwork Wall Base - Recessed Profile**
 Size **6" H x .35" thick x 8' L**
 Carton Size **40 LF per Carton**



TA2 Saddlebrook WB

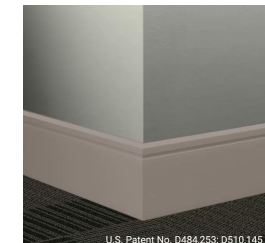


Hilton Tag #B-18 - Resilient Base @ Team Member Breakroom

Style Number **MW-TA8-F**
 Color **TA8 Welsh Castle**
 Product Type **Millwork Wall Base - Reveal Profile**
 Size **4.25" H x .25" thick X 8'**
 Carton Size **64 LF per Carton**



TA8 Welsh Castle CB

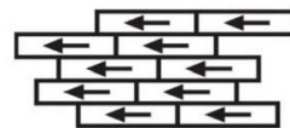


U.S. Patent No. D484,253; D510,145

Tempo by Hilton - Public Space
Team Member Breakroom & Nursing LVT
RF-14

Product Information

Hilton Tag #	RF-14
Style Number	ACCRE-0015-7x48-VT
Color	Fawn Elm 0015
Product Type	LVT / ERT Enhanced REsiliient Tile
Size	7" W x 48" L
Carton Size	23.64 sq ft per carton
Installation Pattern	1/3 Brick Ashlar



INSTALL: 1/3 BRICK ASHLAR

PROPRIETARY PRODUCT/MANUFACTURER

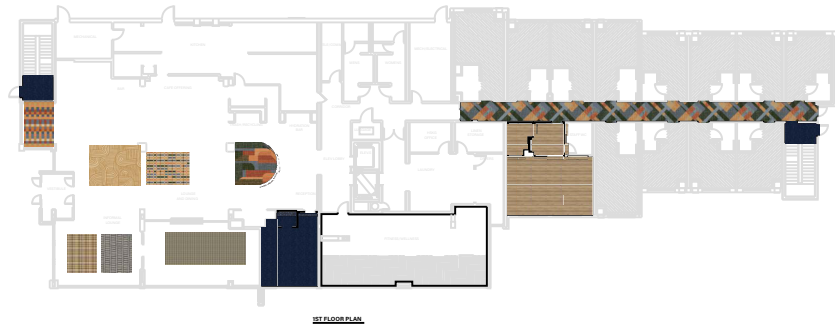
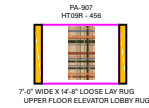
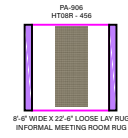
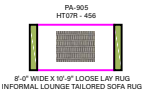
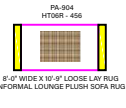
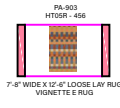
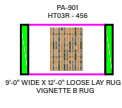
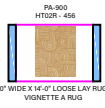
Proprietary Product: Accore Luxury Vinyl flooring is a rigid core construction engineered from the inside, out - and designed to outperform the extreme demands of today's hospitality environments. Suitable for light commercial hospitality environments such as guest rooms.

INSTALLATION

See Accore installation instructions for complete details. Floating installations do not require any adhesives. For Glue Down installations, see below:

ADHESIVES

Tarkett C-GU High Moisture Adhesive Porous & Non-Porous
Substrates: 125-150 sq. ft. per gallon



GENERAL NOTES

- 1) This drawing and designs contained therein are the sole property of Tarkett Hospitality Carpet Mills, Inc.
- 2) The red dotted lines indicate known seams. Due to roll sizes and unexpected conditions that may arise, adjustment seams may become necessary during installation. Locations of cross seams are approximate. Actual layout may vary based on roll sizes.
- 3) All contractors using this drawing will be responsible for verifying all dimensions and package requirements. Tarkett Hospitality Carpet Mills, Inc. will not be held responsible for final yardage requirements.
- 4) These drawings are used to show the interior design intent only and should not be used for construction purposes.
- 5) Patterned Products require experienced and knowledgeable installation technicians. Please ensure that installers have proper equipment and are familiar with the manufacturer's installation Guidelines. Please **contact the manufacturer for detailed details** request a **copy of the installation Guidelines** **at the time of the purchase** **of the product** **to ensure proper installation**.
John Cox @ (706) 260-3054

Rev. #	Description	Date

Approved By:
Date:



TARKETT HOSPITALITY
285 KRAFT DRIVE
DALTON, GA. 30721
(800) 871-3211

Project Name and Address
**TEMPO by HILTON
PROTOTYPE**

SCALE: 1/16" = 1'-0"

Every step matters

Sustainability

Every Step Matters. Tarkett's holistic approach to sustainability is woven into the fabric of how we do business and sits at the heart of our day-to-day decision making. For decades, we've scrutinized every detail of our business for its impact on resources such as soil, water, air, and climate— because when you're trailblazing a more sustainable future, every step matters.

Corporate Transparency is fundamental to our values and the way we do business. Third-party assessments serve as a testament to our performance, earning the trust of customers and partners.



EcoVadis

Tarkett is proud to have been awarded a Platinum sustainability rating by EcoVadis with a score of 81/100, which places us in the top 1% of rated companies. EcoVadis assesses CSR policies, actions, and results across four themes and 21 CSR criteria: environment, labor and human rights, ethics, and sustainable procurement.



Carbon Disclosure Project (CDP)

Tarkett's "A" score for climate change impact positions us at the leadership level of CDP's grading system.



DRIVING AMBITIOUS CORPORATE CLIMATE ACTION

Science Based Targets Initiative

Tarkett's 2030 carbon reduction targets are approved by the Science Based Targets initiative (SBTi). We have two 2030 targets guiding nearly every sustainability initiative at Tarkett:

1. Reduce carbon emissions by 30% across Scopes 1, 2, and 3.
2. Increase recycled content in our products from 18% in 2019 to 30% by 2030.



Start your next project with ReStart®

We're committed to creating a circular economy where nothing goes to waste. Take part by starting your next project with Tarkett's ReStart® flooring take-back and recycling program. The ReStart program will accept any type of flooring from any manufacturer. Join us as we innovate and collaborate towards a healthier future for this generation and generations to come.

Contact Us

HiltonOrders@tarkett.com

800-871-3211



Tarkett Hospitality
285 Kraft Drive
Dalton, GA 30721
800.871.3211
www.tarketthospitality.com