

# Artisan Collection

Batik | Decoupage | Dry Brush | Etched | Fresco | Imprint  
Stamped Leaf | Woodblock Print

BROADLOOM



# Artisan Collection

*Inspired by time-honored craft and the materials of nature, the Artisan Collection brings a handcrafted aesthetic to hospitality interiors. Designed for public spaces, this collection of running-line broadloom evokes a sense of community, warmth, and belonging—for environments that feel both grounded and inviting.*

*With styles that range from delicate to dramatic, the carpet collection speaks to the artistry found in traditional crafts such as woven textiles, woodblock prints, and carved pottery. Like these crafts, the eight carpet patterns emulate enduring forms of nature with an abstract flair, offering a visual rhythm that feels both intentional and hand-touched.*



Scan to Learn More











Batik W0100 Flaxseed 188



Decoupage W0090 Flaxseed 188



Dry Brush W0098 Flaxseed 188



Etched W0096 Flaxseed 188



Fresco W0092 Flaxseed 188



Imprint W0102 Flaxseed 188





Stamped Leaf W0094 Flaxseed 188



Woodblock Print W0088 Flaxseed 188

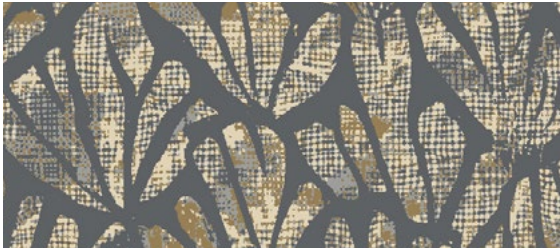


**Running Line Visualizer**  
 Visualize any of the Artisan Collection styles in a variety of hospitality environments, or upload your own photo.

# Artisan Collection

8 Styles | 3 Colorways | Broadloom

Artisan Collection styles call to mind natural surfaces like linen, sisal, and earthenware, layered with organic motifs. From leafy stems to geometric mark-making, the designs provide a deeply handcrafted feel and tactile presence. In three colorways of earthen, neutral shades, this collection transforms spaces through crafted elegance.



Decoupage W0090 Flaxseed 188



Decoupage W0090 Mineral Oil 838



Decoupage W0090 Celadon 368







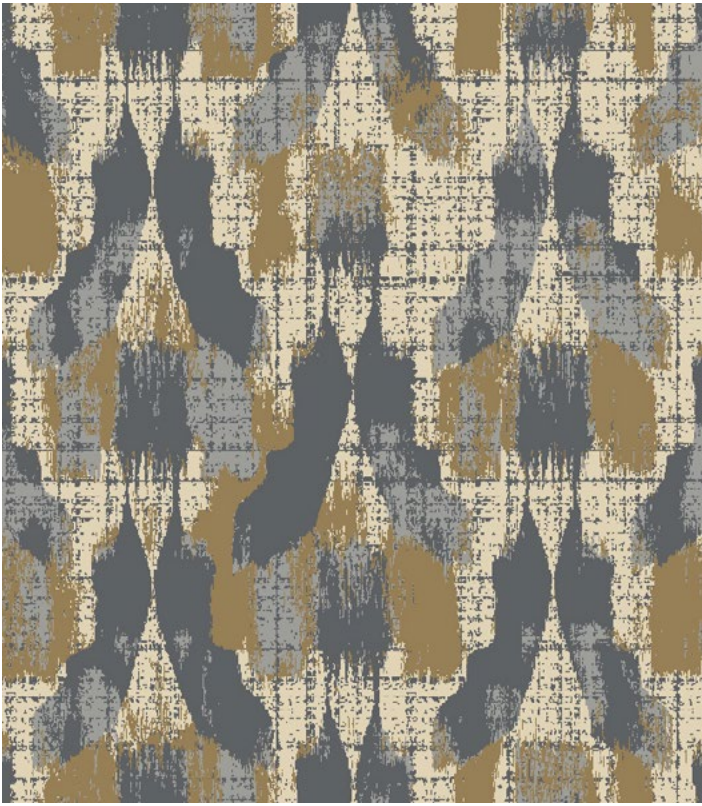


Batik W0100 Flaxseed 188



Decoupage W0090 Flaxseed 188





Dry Brush W0098 Flaxseed 188



Etched W0096 Flaxseed 188















Fresco W0092 Flaxseed 188





Imprint W0102 Flaxseed 188









Stamped Leaf W0094 Flaxseed 188





Stamped Leaf W0094 Flaxseed 188





Woodblock Print W0088 Flaxseed 188







# *Designed to Connect*

Easy, Artistic Coordination

*The Artisan Collection is designed to create a feeling of community in more ways than one.*

The patterns not only feature a harmonious range of motifs but also offer a variety of scales and orientations. This makes it easy to use Artisan Collection across multiple spaces, from large, open areas to corridors to smaller conference rooms.

The collection builds a sense of continuity throughout the environment, while giving each space its own unique beauty.

## Artisan Collection Area Rug

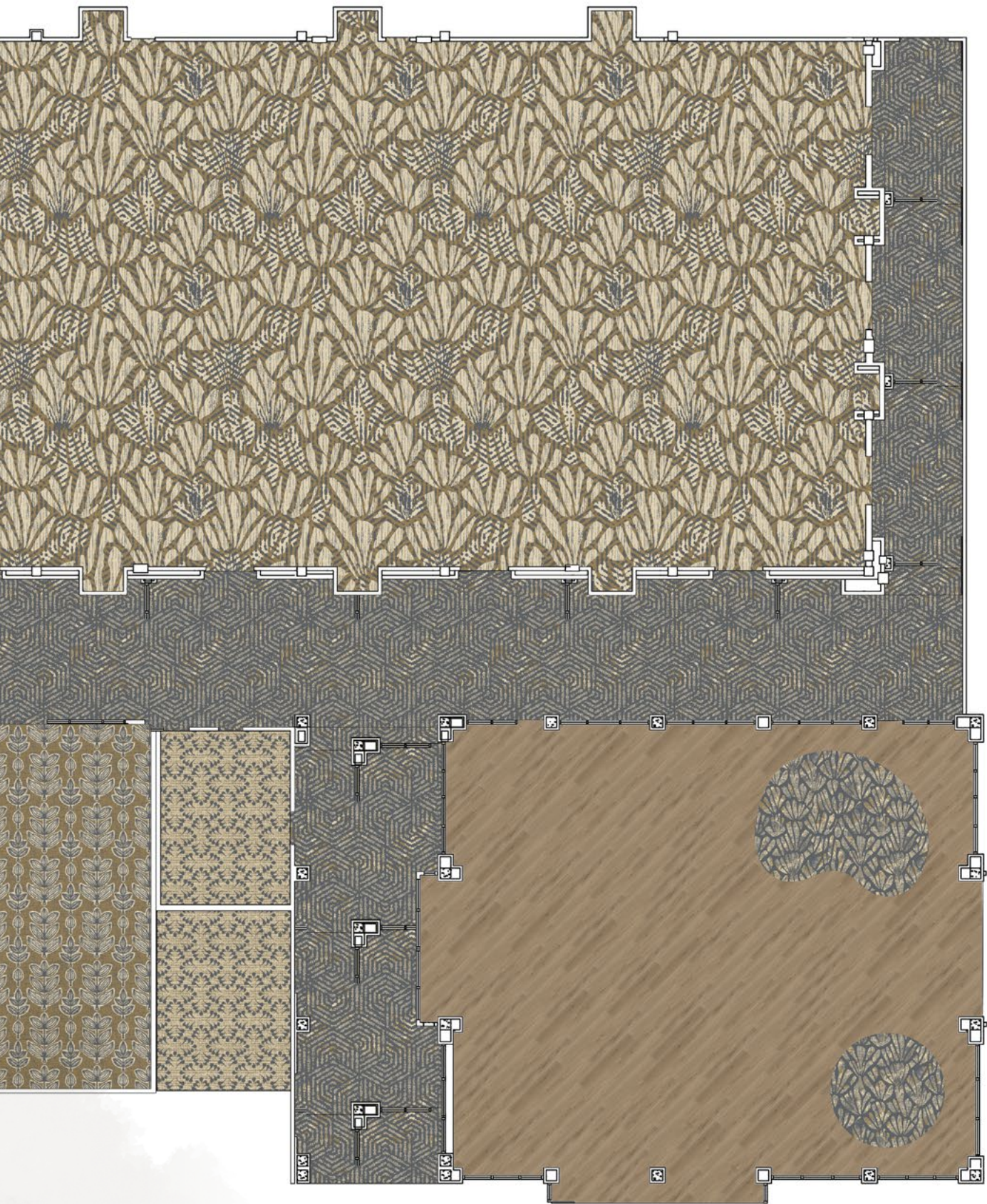
Available in the Decoupage Style.

For spaces with hard surface flooring, an area rug in the Decoupage style provides plush texture and an inviting touch of luxury. The mid-scale style can be cut and bound to meet your needs. Contact your Tarkett Hospitality Sales Rep for details.



Ballroom: **Batik W0100** Flaxseed 188  
Pre-function and Corridor: **Woodblock Print W0088** Flaxseed 188  
Lobby: area rugs in **Decoupage W0090** Flaxseed 188, **Accore LVT in Ashwood Oak 0008**  
Offices: **Imprint W0102** Flaxseed 188  
Meeting Rooms: **Fresco W0092** Flaxseed 188, **Etched W0096** Flaxseed 188  
Throughout: **Millwork Recessed 6" Base**, MW-TA6-X63 Bedrock







# Custom Design Studio

Our Patterns. Your Vision.

*Explore new stories of craft and creativity with 20 custom patterns, each designed to coordinate beautifully with the Artisan Collection. Visit the Custom Design Studio to recolor the patterns, visualize them in a variety of rooms and save your designs by project.*



Scan to Learn More



P75 Flaxseed 188



P76 Flaxseed 188



P77 Flaxseed 188



P80 Flaxseed 188



P81 Flaxseed 188



P82 Flaxseed 188



P83 Flaxseed 188



P84 Flaxseed 188





P88 Flaxseed 188



P89 Flaxseed 188



P90 Flaxseed 188



P91 Flaxseed 188



P92 Flaxseed 188



P96 Flaxseed 188



P98 Flaxseed 188



P99 Flaxseed 188



P100 Flaxseed 188



P102 Flaxseed 188



P138 Flaxseed 188



P298 Flaxseed 188







# Specifications.

## TUFTED BROADLOOM

Style Name/Number:	Batik W0100 Decoupage W0090, Dry Brush W0098, Etched W0096, Fresco W0092, Imprint W0102, Stamped Leaf W0094, Woodblock Print W0088
Construction:	Prestige - Pattern Cut
Fiber Content:	Lextron® Enviro-Green Nylon
Dye Method:	100% Solution Dyed
Primary Backing:	Woven Polypropylene
Secondary Backing:	Unitary
Size:	12 ft.
Gauge:	1/11
Stitches per Inch:	9.25
Tufted Pile Weight:	36 oz. per Sq. Yd.
Total Weight:	83.3 oz.
Density:	5,145
Pile Thickness:	.240 in.
Pattern Repeat:	Varies
Overall Thickness:	.452 in.
Traffic Class:	Heavy
Pill Test:	Pass
Radiant Panel:	Class I
Flammability:	ASTM E 648 Class I
Smoke Density:	ASTM E 662 Less than 450
Indoor Air Quality:	CRI Green Label Plus GLP2380
Material Disclosure:	HPD
Warranty:	10 Year Limited Warranty
Custom Options:	
Sizes:	13 ft. 6 in. and 15 ft.



## ReStart

We're committed to creating a circular economy where nothing goes to waste. Take part by starting your next project with Tarkett's ReStart® flooring take-back and recycling program. The ReStart program will accept any type of soft surface or resilient flooring from any manufacturer. Join us as we innovate and collaborate towards a healthier future for this generation and those to come.

## Transparency.

**Access to Transparency Documents:** Transparency certifications and product details are located on the Tarkett website, [ecomedes.com](https://ecomedes.com) and [mindful MATERIALS](https://mindfulmaterials.com). Visit us on Ecomedes ([tarkett.ecomedes.com](https://tarkett.ecomedes.com)) to find product certification documentation to support green building systems and federal standards.



For more accurate color and pattern representation, we suggest you contact your local Tarkett Hospitality Sales Rep to view an actual product sample. All third-party trademarks are the property of their respective owners.





