

Iconic Threads

32 Hospitality Styles

BROADLOOM

 **Tarkett** *Hospitality*

Iconic Threads

32 Hospitality Styles

BROADLOOM

Tarkett Hospitality
285 Kraft Drive
Dalton, GA 30721
800.871.3211
www.tarketthospitality.com

© 2024 Tarkett Hospitality

 **Tarkett** *Hospitality*

Iconic Threads

Collection

Tweed and checkerboard. Houndstooth and plaid. Some things just always seem to be in style. With the Iconic Threads collection, we bring together the classic patterns that have stood the test of time, paying homage to their traditional roots while reimagining them for now. This broadloom carpet collection provides countless possibilities for mixing and matching iconic patterns—creating hospitality spaces that always feel chic.



Scan to Learn More



Iconic Threads

32 Styles | 3 colorways | Broadloom

Like a closet full of timeless pieces, consider this collection your go-to pattern wardrobe. Find options to enhance any space and any aesthetic, in three can't-go-wrong colorways.



Argyle W0056
Onyx 904



Basketweave W0032
Onyx 904



Bold Plaid W0050
Onyx 904



Checkerboard W0006
Onyx 904



Chevron W0022
Onyx 904



Crosshatch W0044
Onyx 904



Distressed Twill W0024
Onyx 904



Dotted W0060
Onyx 904



Embossed W0040
Onyx 904



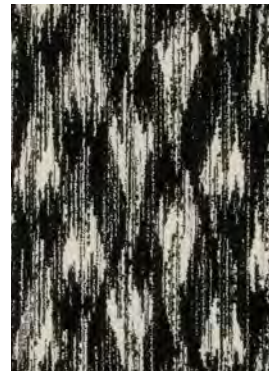
Estate Tweed W0010
Onyx 904



Estate Tweed II W0012
Onyx 904



Eyelet Ogee W0014
Onyx 904



Flamestitch W0052
Onyx 904



Flecked W0002
Onyx 904



Fretwork W0064
Onyx 904



Greek Geo W0020
Onyx 904



Retro Leaf W0030
Indigo 604



Harlequin Lattice W0008
Onyx 904



Houndstooth Plaid W0004
Onyx 904



Lace W0062
Onyx 904



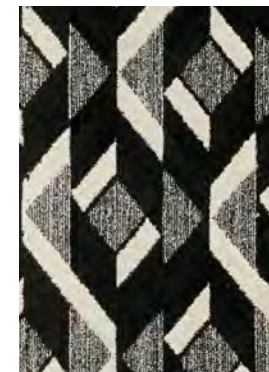
Linen W0028
Onyx 904



Madras W0054
Onyx 904



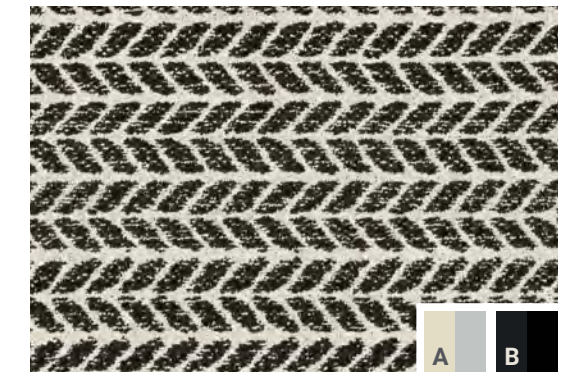
Pinstripe W0018
Onyx 904



Retro Herringbone W0058
Onyx 904



Retro Leaf W0030
Onyx 904



Retro Leaf W0030
Onyx 904



Retro Leaf II W0046
Onyx 904



Rib Weave W0034
Onyx 904



Stacked W0042
Onyx 904



Tweed W0038
Onyx 904



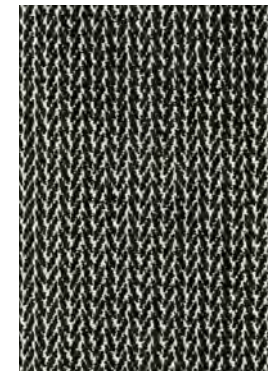
Vintage Chevron W0048
Onyx 904



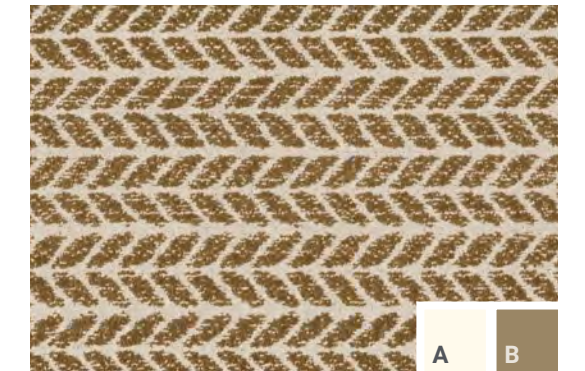
Vintage Houndstooth W0036
Onyx 904



Vintage Ogee W0026
Onyx 904



Woven Herringbone W0016
Onyx 904



Retro Leaf W0030
Saddle 104



Argyle W0056 Saddle 104



Argyle W0056 Onyx 904



Basketweave W0032 Onyx 904



Bold Plaid W0050 Onyx 904



Checkerboard W0006 Onyx 904



Chevron W0022 Onyx 904



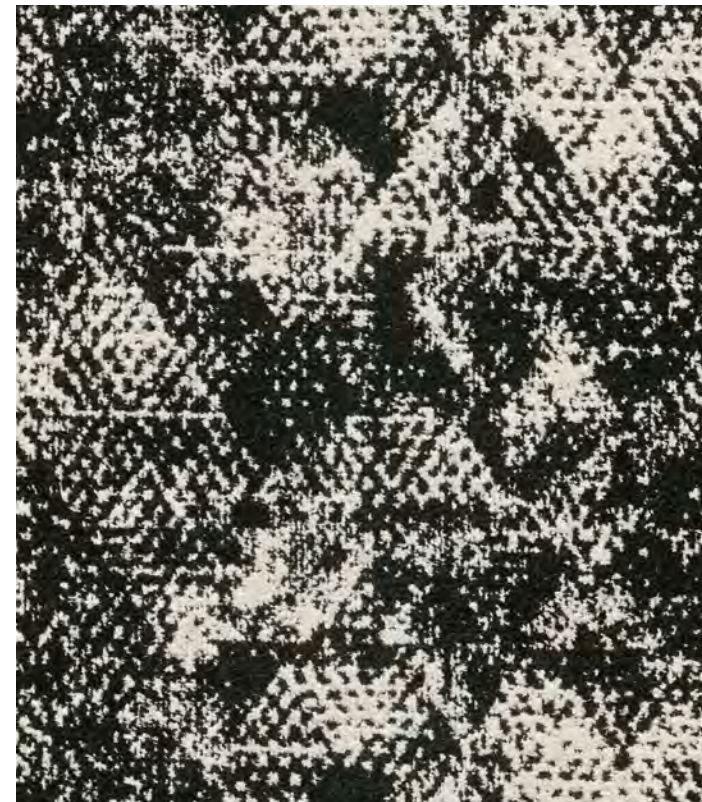
Checkerboard W0006 Onyx 904



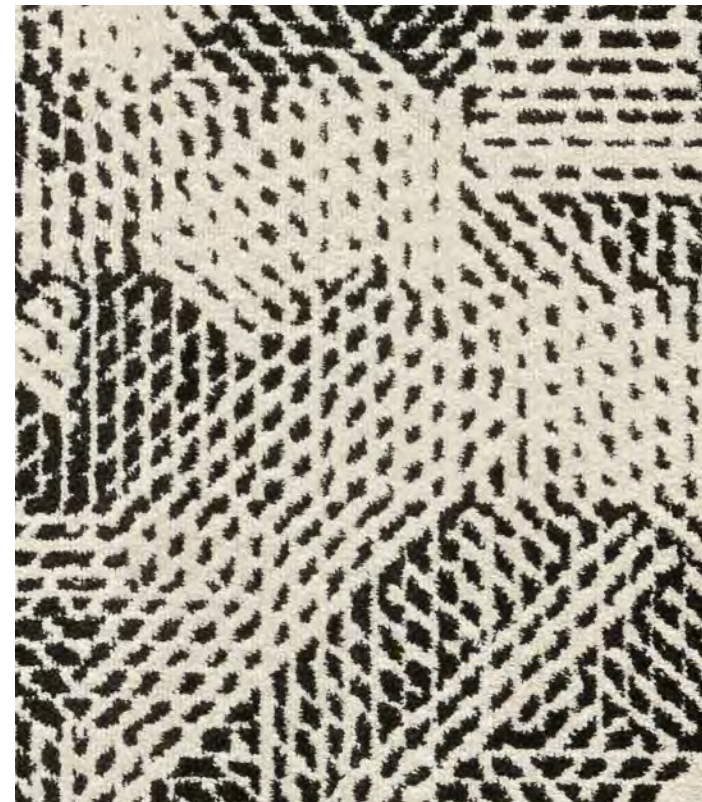
Distressed Twill W0024 Onyx 904



Crosshatch W0044 Onyx 904



Distressed Twill W0024 Onyx 904



Dotted W0060 Onyx 904



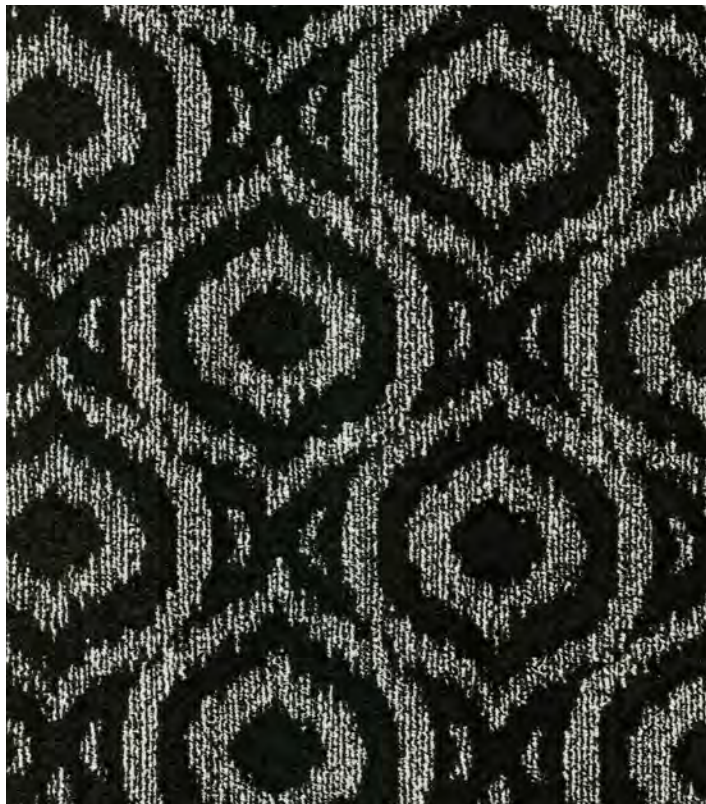
Embossed W0040 Onyx 904



Estate Tweed W0010 Onyx 904



Estate Tweed II W0012 Onyx 904



Eyelet Ogee W0014 Onyx 904



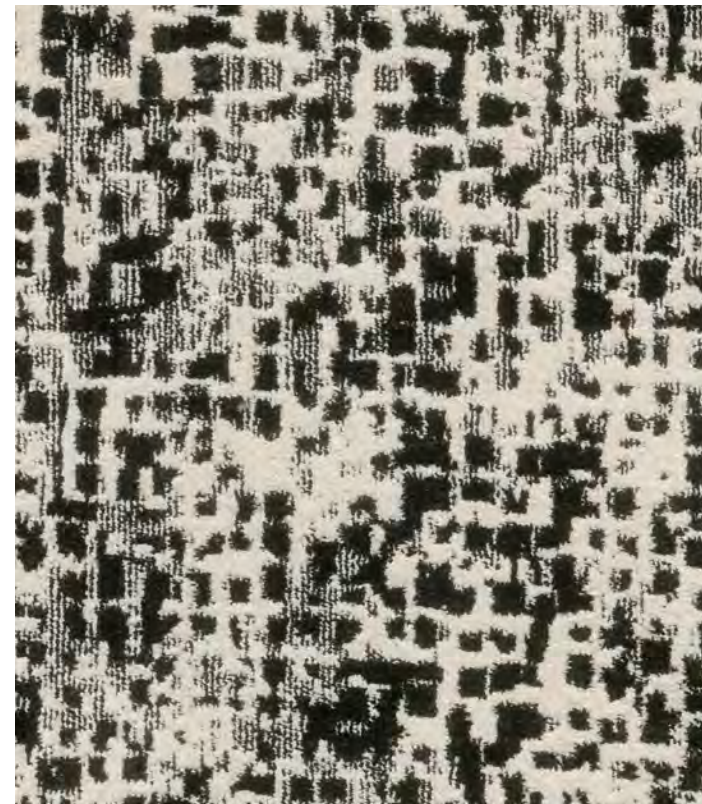
Flamestitch W0052 Onyx 904



Estate Tweed W0010 Indigo 604



Greek Geo W0020 Saddle 104



Flecked W0002 Onyx 904



Fretwork W0064 Onyx 904



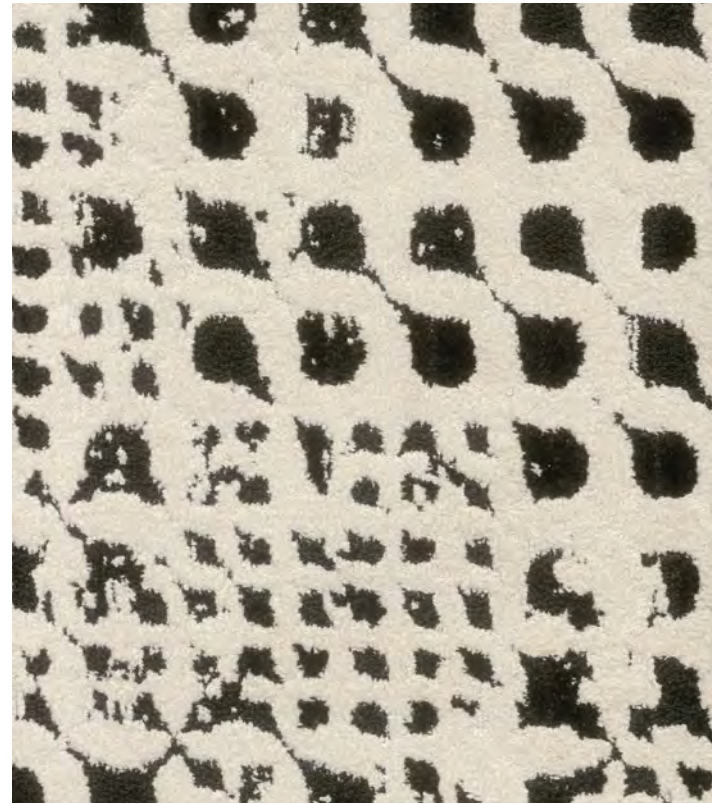
Greek Geo W0020 Onyx 904



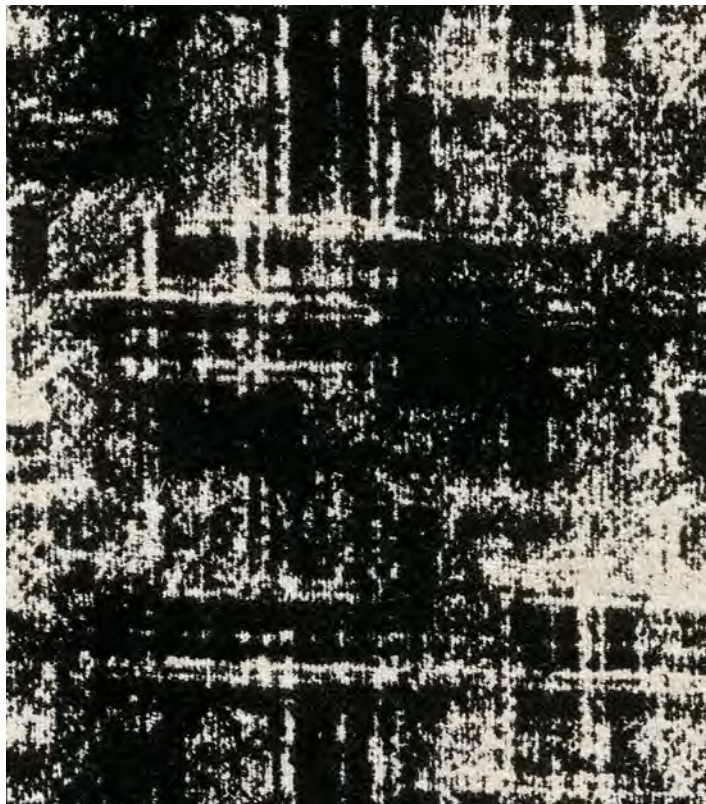
Harlequin Lattice W0008 Onyx 904



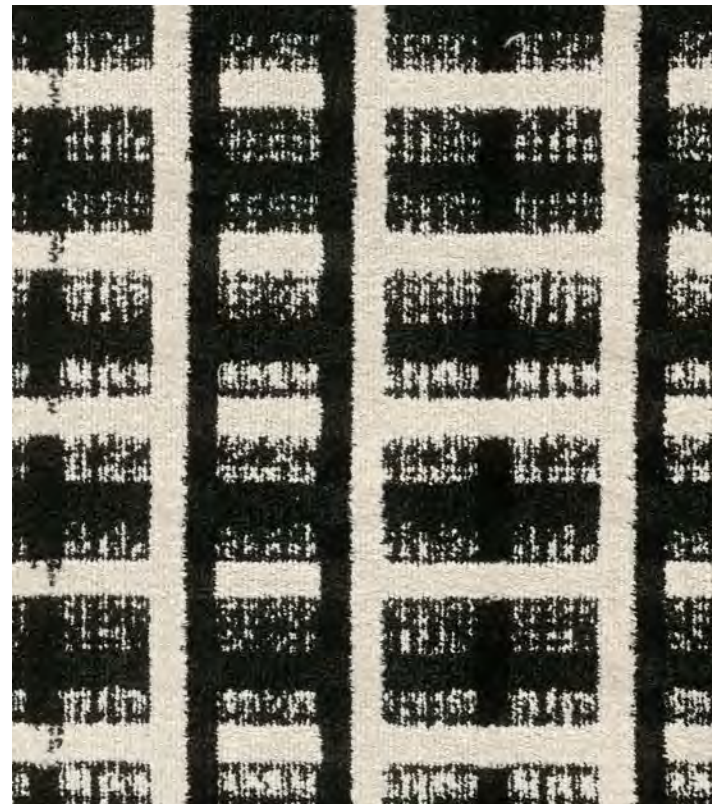
Houndstooth Plaid W0004 Onyx 904



Lace W0062 Onyx 904



Linen W0028 Onyx 904



Madras W0054 Onyx 904



Houndstooth Plaid W0004 Onyx 904



Retro Herringbone W0058 Onyx 904



Pinstripe W0018 Onyx 904



Retro Herringbone W0058 Onyx 904



Retro Leaf W0030 Onyx 904



Retro Leaf II W0046 Onyx 904



Rib Weave W0034 Onyx 904



Stacked W0042 Onyx 904



Stacked W0042 Saddle 104



Vintage Houndstooth W0036 Indigo 604



Tweed W0038 Onyx 904



Vintage Chevron W0048 Onyx 904



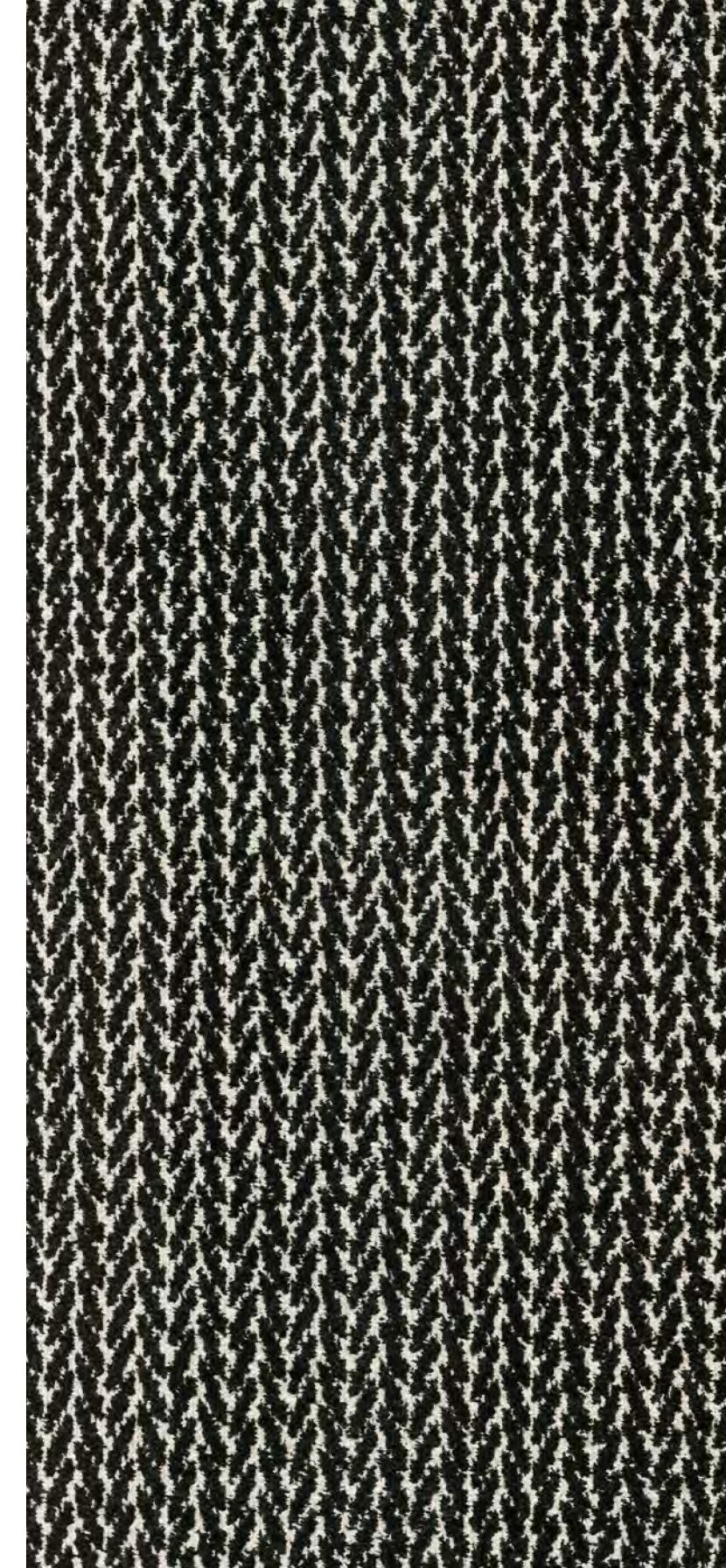
Vintage Houndstooth W0036 Onyx 904



Vintage Ogee W0026 Onyx 904



Woven Herringbone W0016 Saddle 104



Woven Herringbone W0016 Onyx 904



Specifications.

TUFTED BROADLOOM

Style Name/Number:	Argyle W0056, Basketweave W0032, Bold Plaid W0050, Checkerboard W0006, Chevron W0022, Crosshatch W0044, Distressed Twill W0024, Dotted W0060, Embossed W0040, Estate Tweed W0010, Estate Tweed II W0012, Eyelet Ogee W0014, Flamestitch W0052, Flecked W0002, Fretwork W0064, Greek Geo W0020, Harlequin Lattice W0008, Houndstooth Plaid W0004, Lace W0062, Linen W0028, Madras W0054, Pinstripe W0018, Retro Herringbone W0058, Retro Leaf W0030, Retro Leaf II W0046, Rib Weave W0034, Stacked W0042, Tweed W0038, Vintage Chevron W0048, Vintage Houndstooth W0036, Vintage Ogee W0026, Woven Herringbone W0016
Construction:	Dynamics - Multi-Level Cut/Loop
Fiber Content:	Lextron® Envrio-Green Nylon
Dye Method:	100% Solution Dyed
Primary Backing:	Woven Polypropylene
Secondary Backing:	Action Bac
Size:	12 ft.
Gauge:	1/10
Stitches per Inch:	11
Tufted Pile Weight:	32 oz. per Sq. Yd.
Total Weight:	66.2 oz.
Density:	3,767
Pile Thickness:	.278 in.
Pattern Repeat:	Varies
Overall Thickness:	.403 in.
Traffic Class:	Heavy
Pill Test:	Pass
Radiant Panel:	Class I
Flammability:	ASTM E 648 Class I
Smoke Density:	ASTM E 662 Less than 450
Indoor Air Quality:	CRI Green Label Plus GLP2380
Material Disclosure:	HPD
Warranty:	10 Year Limited Warranty
Custom Options:	
Sizes:	13 ft. 6 in. and 15 ft.
Backing:	Unitary



ReStart

We're committed to creating a circular economy where nothing goes to waste. Take part by starting your next project with Tarkett's ReStart® flooring take-back and recycling program. The ReStart program will accept any type of soft surface or resilient flooring from any manufacturer. Join us as we innovate and collaborate towards a healthier future for this generation and those to come.

Transparency.

Access to Transparency Documents: Transparency certifications and product details are located on the Tarkett website, ecomedes.com and [mindful MATERIALS](http://mindfulMATERIALS.com). Visit us on [Ecomedes \(tarkett.ecomedes.com\)](http://Ecomedes.com) to find product certification documentation to support green building systems and federal standards.



NON PVC



For more accurate color and pattern representation, we suggest you contact your local Tarkett Hospitality Sales Rep to view an actual product sample. All third-party trademarks are the property of their respective owners.