

Knitwear

Broken Twill | Cableknit | Cross-Stitch | Glen Check | Herringbone
Open Basketweave | Sweater | Tartan | Tattersall

CARPET TILE

Knitwear

Collection

Giving hospitality spaces a relaxed yet stylish vibe, Knitwear features timeless textural designs that bring to mind the softness of a favorite sweater. The collection's carpet tile format remixes and randomizes each pattern across the floor, adding a fresh edge to guestrooms, corridors and more. From nubby cable-knit visuals to an airy, abstract cross-stitch, Knitwear creates a comforting foundation for your spaces.



Scan to Learn More

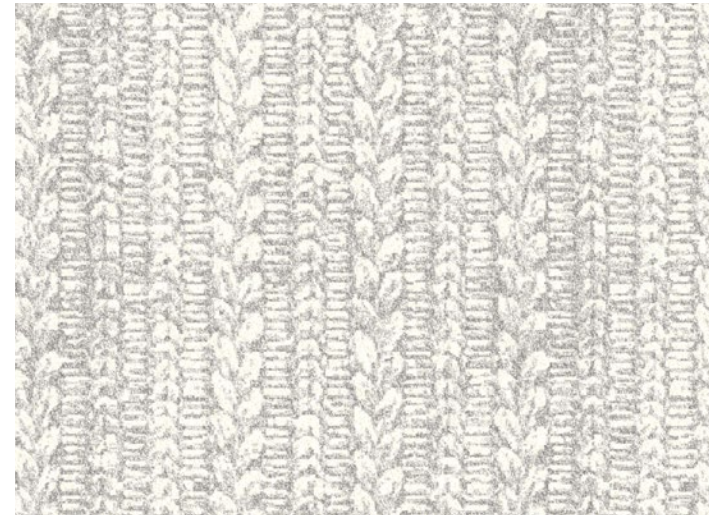




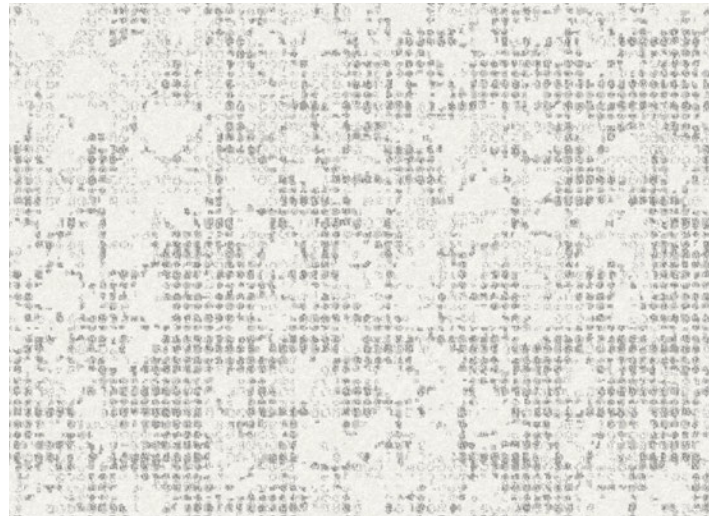
Broken Twill W0055 Crisp Air 103



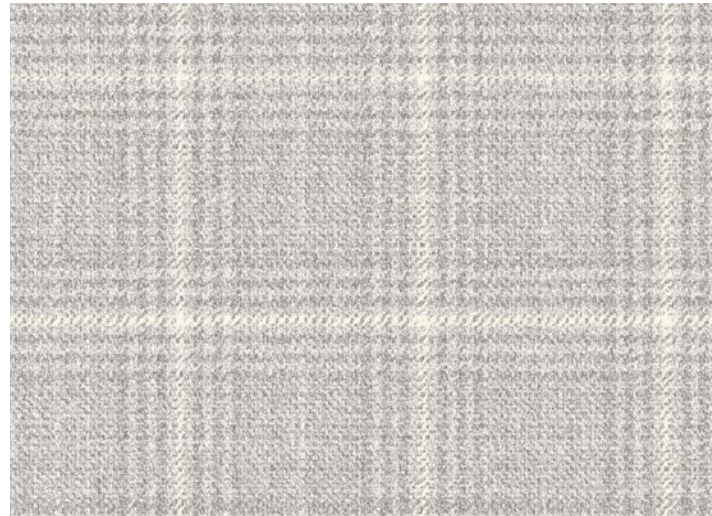
Cableknit W0049 Crisp Air 103



Sweater W0045 Crisp Air 103



Cross-Stitch W0053 Crisp Air 103



Glen Check W0043 Crisp Air 103



Tartan W0047 Crisp Air 103



Herringbone W0059 Crisp Air 103



Open Basketweave W0057 Crisp Air 103



Tattersall W0051 Crisp Air 103

Knitwear

9 Styles | 6 colorways | 9" x 36" tiles

Stylish comfort starts here, with a range of styles that deliver beautifully detailed visual texture and a warm, handcrafted feel. Bring the softness to life with six versatile colorways.



Crisp Air 103



Coffee Break 213



Spring Thaw 323



Breton Stripe 803



Toasty Twilight 813



Night Chill 933



Broken Twill W0055 Toasty Twilight 813 | 9" X 36" Vertical Ashlar Installation



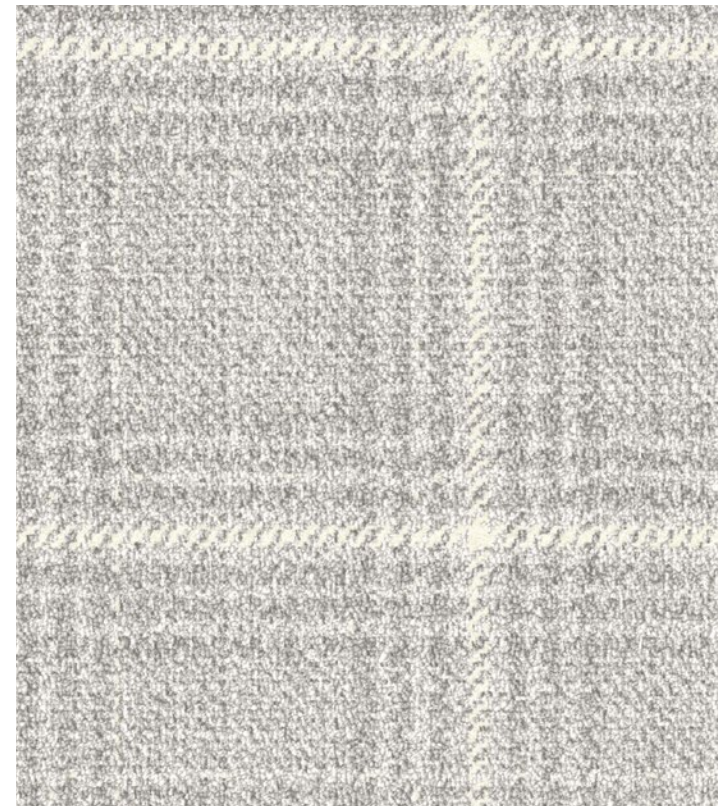
Broken Twill W0055 Crisp Air 103



Cableknit W0049 Crisp Air 103



Cross-Stitch W0053 Crisp Air 103



Glen Check W0043 Crisp Air 103



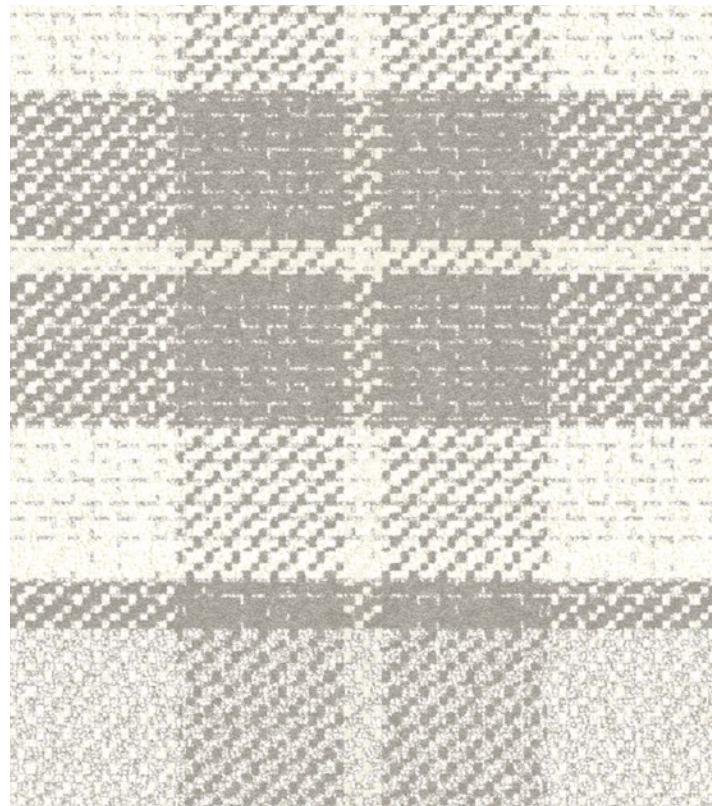
Herringbone W0059 Crisp Air 103



Open Basketweave W0057 Crisp Air 103



Sweater W0045 Crisp Air 103



Tartan W0047 Crisp Air 103



Open Basketweave W0057 Spring Thaw 323 | 9" X 36" Vertical Ashlar Installation



Tattersall W0051 Crisp Air 103



Tattersall W0051 Coffee Break 213 | 9" X 36" Vertical Ashlar Installation



Our Fibers

Durable, cost-effective, and eco-friendly, Lextron™ Enviro-Green is 100% solution dyed, made from 10% pre-consumer recycled content and is recyclable after the carpet life cycle is complete.

Lextron™ Enviro-Green Solution Dyed Nylon

Our in-house production process, using state-of-the-art equipment, ensures high-quality, fade-resistant fiber with superior stain resistance. With a higher twist level than industry standards, Lextron™ Enviro-Green offers exceptional durability.

Tarkett Hospitality can create solid color options to coordinate with any of our running line products. Choose from over 160 colors. Please refer to our Lextron™ pom box for the full color offering (excludes metallics and barber poles) or contact your rep for more information.

Carpet Tile Benefits

The versatility of modular carpet tiles provides numerous benefits:

- Endless options to curate unique layout designs
- Easier to install than traditional carpet, and no long-term commitment
- Easier to inset within a hard surface floor without transition strips
- Can be quickly pulled up for a design refresh, replacement, or repair

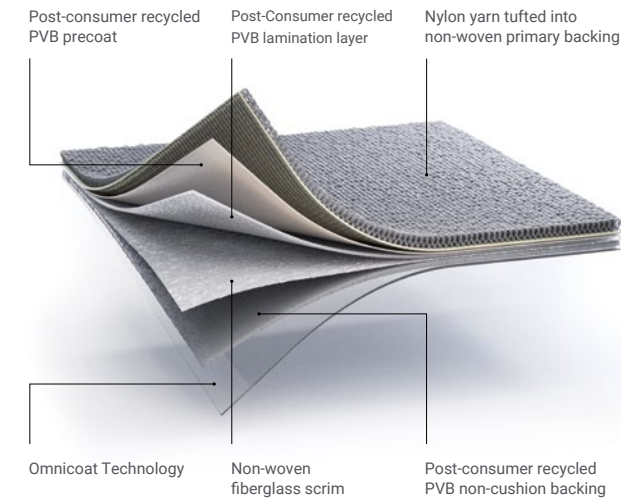
Carpet & LVT Visualizer Studio

Visualize Tarkett Hospitality carpet tile and LVT in a variety of hospitality environments—or in your own space by uploading a photo.



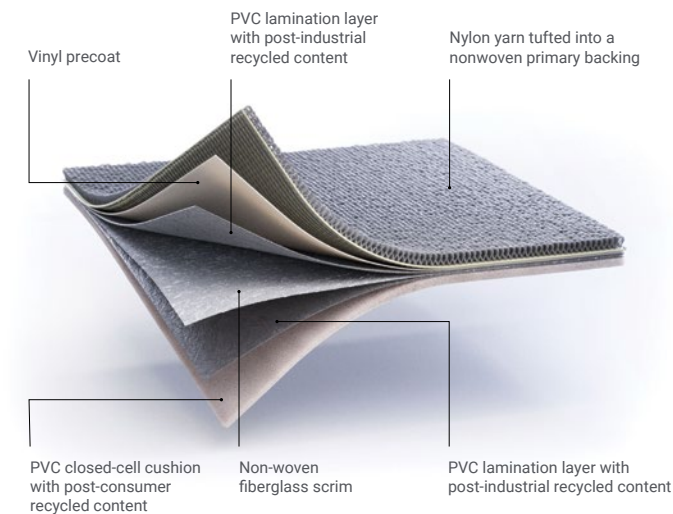
Our Backings

Select from two sustainable backing systems, ethos® Modular with Omnicoat Technology™ and Flex-Aire™ Cushion Modular, tailored to your specific performance needs. Our portfolio showcases sustainable solutions, reflecting our commitment to Proof in Every Step™ of our design and manufacturing process.



ethos Modular with Omnicoat Technology is a non-PVC backing made with post-consumer recycled PVB from car windshields and architectural glass from buildings.

When installed with TarkettTAPE, ethos with Omnicoat Technology requires no moisture testing.



Flex-Aire Modular Cushion provides superior acoustic performance, appearance retention, and moisture management. Offering a 0.22 Noise Reduction Coefficient and a 68 Impact Insulation Class, the product reduces noise and impacts, producing a calmer environment.

With 22-28% overall recycled content (including a minimum of 5-6% post-consumer content), Flex-Aire may be installed with TarkettTAPE for a floating installation (which can be just as easily uninstalled). The product may also be installed with Tarkett's C-12E pressure-sensitive adhesive, which has a C2C Certified Material Health Certificate™ at the Silver level.

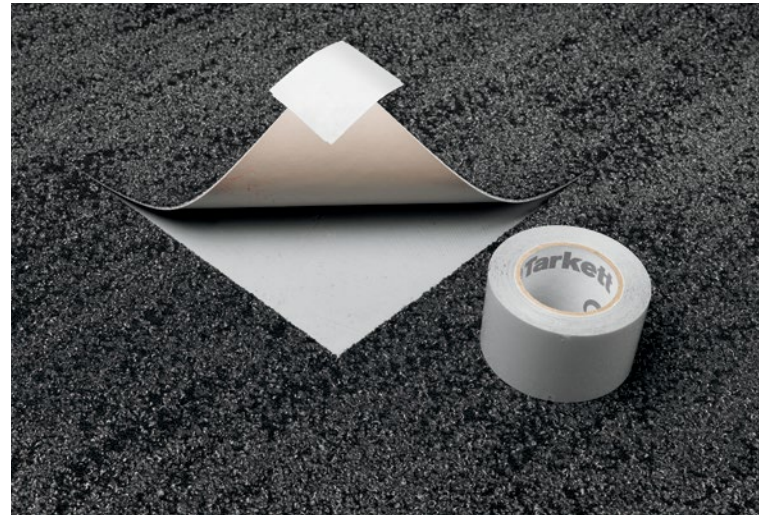
Our technologies.

Omnicoat Technology® is a patented barrier applied to the back of all ethos® Modular flooring. By creating an inert layer on the bottom of ethos, Omnicoat prevents moisture, pH, or previous adhesives from affecting the floor installation.

When combined with TarkettTAPE™, ethos can be installed without moisture testing, saving one to three days of time. Installation can begin as long as there is no visible moisture and the previous adhesive is scraped flat and doesn't telegraph visually through the ethos installation.



TarkettTAPE, a patented polyester film with a chemically inert, silicone-based adhesive, pairs versatility with a future-ready chemical resistance. Tested in extreme moisture and pH levels, the product is capable of withstanding the most adverse concrete conditions and can be used with either Flex-Aire Modular® Cushion or ethos with Omnicoat Technology (which eliminates the need for moisture testing). TarkettTAPE is a fast, easy way to float an installation and makes it simple to uninstall, reinstall and replace tiles when necessary.



Specifications.

CARPET TILE

| | |
|--------------------------------|---|
| Style Name/Number: | Glen Check W0043, Sweater W0045, Tartan W0047, Cableknit W0049, Tattersall W0051, Cross-Stitch W0053, Broken Twill W0055, Open Basketweave W0057, Herringbone W0059 |
| Construction: | Intrepid Multi-Level Cut/Loop |
| Fiber Content: | Lextron® Envrio-Green Nylon |
| Dye Method: | 100% Solution Dyed |
| Primary Backing: | Woven PET |
| Secondary Backing: | Ethos with Omnicoat |
| Size: | 9 in. x 36 in. 24 tiles/box, 6.0 Sq. Yds./box |
| Gauge: | 1/10 |
| Stitches per Inch: | 9 |
| Tufted Pile Weight: | 29 oz. per Sq. Yd. |
| Total Weight: | 113.7 oz. |
| Density: | 6,638 |
| Pile Thickness: | .160 in. |
| Pattern Repeat: | Tile |
| Overall Thickness: | .315 in. |
| Traffic Class: | Heavy |
| Pill Test: | Pass |
| Radiant Panel: | Class I |
| Flammability: | ASTM E 648 Class I |
| Smoke Density: | ASTM E 662 Less than 450 |
| Indoor Air Quality: | CRI Green Label Plus GLP8320 |
| Multi-Attribute Certification: | NSF 140 Gold |
| Warranty: | 10 Year Limited Warranty |
| Custom Options: | |
| Sizes: | 24 in. x 24 in. (15 tiles/box, 6.667 Sq. Yds./box) 18 in. x 36 in. (12 tiles/box, 6.0 Sq. Yds./box) |
| Backing: | Flex-Aire |



ReStart

We're committed to creating a circular economy where nothing goes to waste. Take part by starting your next project with Tarkett's ReStart® flooring take-back and recycling program. The ReStart program will accept any type of soft surface or resilient flooring from any manufacturer. Join us as we innovate and collaborate towards a healthier future for this generation and those to come.

Transparency.

Access to Transparency Documents: Transparency certifications and product details are located on the Tarkett website, ecomedes.com and [mindful MATERIALS](http://mindfulMATERIALS.com). Visit us on Ecomedes (tarkett.ecomedes.com) to find product certification documentation to support green building systems and federal standards.



NON PVC

(ethos)



NSF 140 Gold

For more accurate color and pattern representation, we suggest you contact your local Tarkett Hospitality Sales Rep to view an actual product sample. All third-party trademarks are the property of their respective owners.