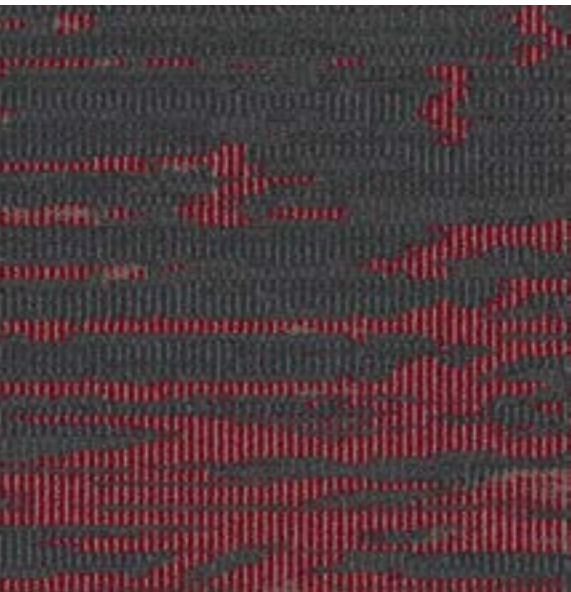


RAMADA  
WYNDHAM HOTELS



 **Tarkett** Hospitality



# MANUFACTURER DIRECT APPROVED

RAMADA PRODUCTS



Broadloom / Guestroom  
RA101



# RAMADA

BROADLOOM / GUEST ROOM

**RAMADA**<sup>®</sup>  
BY WYNDHAM

MANUFACTURER DIRECT APPROVED

Manufacturer: Tarkett Hospitality  
Address: 285 Kraft Drive  
Dalton, GA 30721  
Phone: 706.277.3000  
Contact: Jackie Passaro  
Jackie.Passaro@tarkett.com  
Web: tarketthospitality.com

---

Description: Guest Room  
Style Number: RA101  
Color: 102  
Width: 12'  
Repeat: 24" x 38.2"  
Type: Dynamics - Multi Level Loop Servo Scroll Tip Shear  
Content: Lextron Enviro-Green Solution Dyed Nylon  
Weight: 32 oz. tufted face weight  
Primary Backing: Woven Polypropylene  
Secondary Backing: Action Bac  
Pile Height: .250" High, .187" Med, .062" Low  
Gauge: 1/10"  
Dye Method: Solution Dyed  
Installation Method: Broadloom  
Flame Requirements: Meets or exceeds requirement Class 1



## Additional Information:

- Due to the manufacturing process of a tip shear product, the finished yarn weight will vary more than normal manufacturing tolerances and side match cannot be guaranteed.
- Carpet should be installed in accordance with the Carpet and Rug Institute's standard CRI-104. Carpet must be over manufacturer's recommended pad.
- Pattern streaks and banding are visually apparent streaking in patterned carpet resulting from linear juxtaposition of pattern elements visible in both length and width direction. IT IS NOT A CARPET DEFECT, but is inherent in solution dyed graphic and cut/loop patterns.
- All Specifications subject to normal manufacturing tolerance.



# APPROVED

RAMADA PRODUCTS

Corridor  
RA312, Color 340

Manufacturer: Tarkett Hospitality  
Address: 285 Kraft Drive  
Dalton, GA 30721  
Phone: 706.277.3000  
Contact: Jackie Passaro  
Jackie.Passaro@tarkett.com  
Web: tarketthospitality.com

### Choose Tarkett Hospitality

- + Approved Styles
- + Lowest Pricing
- + Fast Delivery
- + 10-Year Warranty
- + Broadloom Carpet
- + Lextron Solution-Dyed Nylon



Product Type: Broadloom  
Corridor  
Style Number: RA312  
Color Number: 340  
Specs: 36 oz. - 12' W  
Pattern Repeat: 72" x 120"



Product Type: Accent Carpet Tile  
Public Space  
Style Number: A0002 Cache Tweed  
Color Number: 42704 Noir Noir  
Tile Size: 24" x 24"



Product Type: Broadloom  
Corridor  
Style Number: RA315  
Color Number: 343  
Specs: 36 oz. - 15' W  
Pattern Repeat: 90" x 180"



Product Type: Walk-Off Carpet Inset  
Front Entrance  
Style Number: 02578 - Abrasive Action II  
Color Number: 09103 Winter Grey  
Pattern Repeat: 6" x 105"

# RAMADA

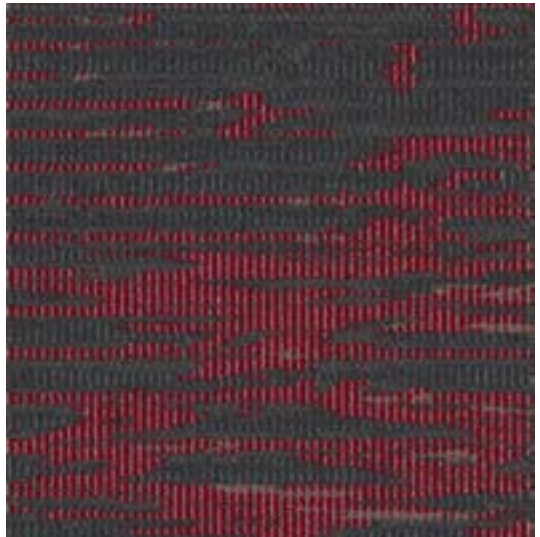
BROADLOOM / CORRIDOR

**RAMADA**<sup>®</sup>  
BY WYNDHAM

Manufacturer: Tarkett Hospitality  
Address: 285 Kraft Drive  
Dalton, GA 30721  
Phone: 706.277.3000  
Contact: Jackie Passaro  
Jackie.Passaro@tarkett.com  
Web: tarketthospitality.com

---

Description: Corridor (Heavy)  
Style Number: RA312  
Color: 340  
Width: 12'  
Repeat: 72" x 120"  
Type: Dynamics – Servo-Scroll Loop Tip Shear  
Content: Lextron Enviro-Green Solution Dyed Nylon  
Weight: 36 oz. tufted face weight  
Primary Backing: Woven Polypropylene  
Secondary Backing: Unitary Action Bac  
Pile Height: .250" High, .187" Med, .062" Low  
Gauge: 1/10"  
Dye Method: Solution Dyed  
Installation Method: Broadloom  
Flame Requirements: Meets or exceeds requirement Class 1



## Additional Information:

- Due to the manufacturing process of a tip shear product, the finished yarn weight will vary more than normal manufacturing tolerances and side match cannot be guaranteed.
- Carpet should be installed in accordance with the Carpet and Rug Institute's standard CRI-104. Carpet must be over manufacturer's recommended pad.
- Pattern streaks and banding are visually apparent streaking in patterned carpet resulting from linear juxtaposition of pattern elements visible in both length and width direction. IT IS NOT A CARPET DEFECT, but is inherent in solution dyed graphic and cut/loop patterns.
- All Specifications subject to normal manufacturing tolerance.



# RAMADA

BROADLOOM / CORRIDOR

**RAMADA**<sup>®</sup>  
BY WYNDHAM

Manufacturer: Tarkett Hospitality  
Address: 285 Kraft Drive  
Dalton, GA 30721  
Phone: 706.277.3000  
Contact: Jackie Passaro  
Jackie.Passaro@tarkett.com  
Web: tarketthospitality.com

---

Description: Corridor (Heavy)  
Style Number: RA315  
Color: 343  
Width: 15'  
Repeat: 90" x 180"  
Type: Dynamics - Multi Level Loop Servo Scroll Tip Shear  
Content: Lextron Enviro-Green Solution Dyed Nylon  
Weight: 36 oz. tufted face weight  
Primary Backing: Woven Polypropylene  
Secondary Backing: Action Bac  
Pile Height: .250" High, .187" Med, .062" Low  
Gauge: 1/10"  
Dye Method: Solution Dyed  
Installation Method: Broadloom  
Flame Requirements: Meets or exceeds requirement Class 1



## Additional Information:

- Due to the manufacturing process of a tip shear product, the finished yarn weight will vary more than normal manufacturing tolerances and side match cannot be guaranteed.
- Carpet should be installed in accordance with the Carpet and Rug Institute's standard CRI-104. Carpet must be over manufacturer's recommended pad.
- Pattern streaks and banding are visually apparent streaking in patterned carpet resulting from linear juxtaposition of pattern elements visible in both length and width direction. IT IS NOT A CARPET DEFECT, but is inherent in solution dyed graphic and cut/loop patterns.
- All Specifications subject to normal manufacturing tolerance.

# RAMADA

BROADLOOM / WALK-OFF INSET

**RAMADA**<sup>®</sup>  
BY WYNDHAM

Manufacturer: Tarkett Hospitality  
Address: 285 Kraft Drive  
Dalton, GA 30721  
Phone: 706.277.3000  
Contact: Jackie Passaro  
Jackie.Passaro@tarkett.com  
Web: tarketthospitality.com

---

Description: Walk-Off Carpet Inset  
Style Number: 02578 - Abrasive Action II  
Color: 19103 Winter Grey  
Carpet Tile Size: 6" x 105"  
Content: Solution Dyed Nylon  
Weight: 24 oz. tufted face weight  
Primary Backing: Synthetic  
Dye Method: Solution Dyed  
Installation Method: Direct Glue Down  
Flame Requirements: Smoke Density 450 or Less (ASTM E-662)



## Additional Information:

- Carpet should be installed in accordance with the Carpet and Rug Institute's standard CRI-104/CRI-105.
- Pattern streaks and banding are visually apparent streaking in patterned carpet resulting from linear juxtaposition of pattern elements visible in both length and width direction. IT IS NOT A CARPET DEFECT, but is inherent in solution dyed graphic and cut/loop patterns.
- All Specifications subject to normal manufacturing tolerance.



# RAMADA

CARPET TILE / GUEST ROOM

**RAMADA**<sup>®</sup>  
BY WYNDHAM

Manufacturer: Tarkett Hospitality  
Address: 285 Kraft Drive  
Dalton, GA 30721  
Phone: 706.277.3000  
Contact: Jackie Passaro  
Jackie.Passaro@tarkett.com  
Web: tarketthospitality.com

---

Description: Accent Carpet at Public Space  
Style Number: A0002 Cache Tweed  
Color: 42704 Noir Noir  
Carpet Tile Size: 24" x 24"  
Type: Tufted Patterned Loop  
Content: Solution Dyed Nylon  
Thickness: .219  
Weight: 25 oz. sq /yd  
Primary Backing: Synthetic  
Dye Method: TDX XD Solution Dyed Nylon  
Installation Method: Vertical Ashlar  
Flame Requirements: Smoke Density 450 or Less (ASTM E-662)



## Additional Information:

- Carpet should be installed in accordance with the Carpet and Rug Institute's standard CRI-104/CRI-105.
- Pattern streaks and banding are visually apparent streaking in patterned carpet resulting from linear juxtaposition of pattern elements visible in both length and width direction. IT IS NOT A CARPET DEFECT, but is inherent in solution dyed graphic and cut/loop patterns.
- All Specifications subject to normal manufacturing tolerance.

**Tarkett Hospitality**

285 Kraft Drive  
Dalton, GA 30721  
800.871.3211

[www.tarketthospitality.com](http://www.tarketthospitality.com)